

## Product datasheet for **MG211135**

### **Ercc4 (BC026792) Mouse Tagged ORF Clone**

#### **Product data:**

Product Type:	Expression Plasmids
Product Name:	Ercc4 (BC026792) Mouse Tagged ORF Clone
Tag:	TurboGFP
Symbol:	Ercc4
Synonyms:	A1606920; Xpf
Mammalian Cell Selection:	Neomycin
Vector:	pCMV6-AC-GFP (PS100010)
E. coli Selection:	Ampicillin (100 ug/mL)



[View online »](#)

**ORF Nucleotide Sequence:**

>MG211135 representing BC026792  
 Red=Cloning site Blue=ORF Green=Tags(s)

TTTTGTAATACGACTCACTATAGGGCGGCCGGGAATTCGTCGACTGGATCCGGTACCGAGGAGATCTGCC  
 GCC**CGGATCGCC**

ATGGCCCGCTGTTGGAGTACGAGAGGCAGCAGGTGCTGGAAGTCTCGACAGCGACGGGCTGGTGGTGT  
 GTGCCCGGACTCGGCACCGACCGGCTCCTCTACCATTTCTGCGGCTTCACTGCCACCGGCCTGCCT  
 GGTGCTGGTGTCAACACGCAGCCGGCCGAGGAGGAATATTTTATCAATCAGTTGAAGATAGAAGGAGTT  
 GAACATCTCCCTCGACGAGTGACAAATGAAATCGCAAGTAAACAGTCGCTATGAAGTCTACACGCAGGGT  
 GTATTATATTTGCAACAAGCCGAATACTCGTGGTTGATTTCTTGACAGGTAGAATACCTTCAGATTAAT  
 AACTGGCATCCTCGTGTACAGGGCACACAGAATCATTGAGTCTGCCAGGAAGCCTTCATCCTGCGCCTC  
 TTCGCCAGAAAAACAAGCGGGTTCATCAAAGCTTTCACCGACAACGCTGTTGCCTTTGACACTGGCT  
 TTTGTCACGTGGAAGAGTGATGCGGAACCTTTTTGTGAGGAAGCTCTACCTGTGGCCAAGTTCATGT  
 AGCAGTCAACTATTCTTGAACAACACAAGCCTGAAAGTTGTAGAGATTCAGTGTCCATGACTCCCGCC  
 ATGCTTGGCATTAGACGGCCATACTAGACATCTTAAATGCATGTCTGAAAGAAGTGAATGTACACAAC  
 CGTCACTTGAAGTAGAAGATTTGCTACTAGAAAACGCTCTTGGGAAGCCATTCGACAAGACAATCCGCCA  
 TTACTTGGACCCTTTGTGGCATCAGCTTGGAGCCAAGACTAAATCCTTGGTGCAGATTTAAAGATACTA  
 AGAACCTTACTGCAGTATCTCTCAGTATGATTGTGTTACATTTCTGAATCTTCTGGAATCTCTGAGAG  
 CAACAGAGAAGGTGTTTGGTCAAGTTCAGGTTGGCTTTTCTGGATGCTAGCACCTCCATGTTTGTGAA  
 TGCTCGTGCCCGAGTTTACCGAGTTCAGATGTCAAATGAACAAAAAGGCCAAAAACATCAGAAAAGACG  
 TCGAGTCCAGAAGTTCAAGAAAACAAAAAAGAACTGGTCTAGAGAGCAATCAAAGTGGGAGCGCTGA  
 CTGACGTCCTGAAAGAAATCGAAGCAGAAAATAAGGAGAGCGAAGCCCTTGGTGGCCAGCCGGGTGCT  
 GATCTGTGCAAGCGATGACCGCAGCTGCCAGCTGAGAGACTACCTGTCCGCCGAGCAGAAAACCTTC  
 CTGCTGCGACTTTATAGGAAAACCTTTGAGAAGGATGGCAAAGCTGAAGAAGTGTGGTAAATGTTAGAA  
 AGGGGGACGGCCGAAGAGAACTACAAAATCTGACAAAAGACAAAAGCCGCTCCAAAACAAGGAGCGTGC  
 TTCGCCAAAAGGGGGCCCTCTCAAAGGAAGAAGCAAGAGCTGACTCTGACGCAAGTTTGGGGTCC  
 GCTGAGGAGCCGCGGAGGACAAGGCTTTGGAGGAAGACCTGTGCAGACAGACCAGTGTAGCCAGAAAG  
 GCTGCGGGGTAGAGATTAAGCGTGAATCATTTGATTTAAATGTGTCGCTGATGCGGCCTATGGCATCCT  
 GAAAGAGCCCTGACCATCATCCATCCGCTTCTAGGGTGCAGCGACCCCTATGCCCTGACGCGGGTACTG  
 CACGAGGTGGAGCCAGATACGTGGTCTGTATGATGCAGAGCTCACCTTTGTTCCCAACTGGAGATCT  
 ACAGGGCTAGCAGGCCTGGGAAACCTCTGAGGGTTTACTTTCTTATATACGGAGGCTCCACGGAAGAGCA  
 GGCTACCTGACTGCTCTGCGGAAAGAAAAGGAAGCCTTTGAAAAGCTCATAAGAGAAAAAGCTAGCATG  
 GTTGTCCCGAAGAACGGGAAGGCAGAGATGAGACCAACCTGGACCTAGCAAGAGGCTCAGCAGCCCTGG  
 ATGCTCCACGGACACTCGGAAAGCCGGTGGCCAGGAGCAGAAATGGCACCCAGTCCAGCATCGTGGTGG  
 CATGCGTGAGTTTCGGAGCGAGCTCCCATCTCTGATCCATCGGCGGGGATTGACATAGAGCCAGTACT  
 CTGGAGGTGGGTGATTACATCCTGACACCTGAGCTGTGTGGAGCGCAAAGTGTGAGCGACCTCATTG  
 GCTCGTGCACAGTGGCCGCTGTACAGCCAGTGCCTAGCCATGTCTCGCTACTACCGGAGGCTGTGCT  
 GCTCATTGAGTTTGACCCGAGCAAGCCCTTCCCTGGCGCCACGAGGTGCCTTCTCCAGGAGATGAGC  
 AGCAGCGATGTGAGCTCCAAGCTTACGCTCCTACCTTGCACTTCCCGGCTTTCGGGCTGTCTGGTGCC  
 CCTCACCCACGCCACAGCCGAGCTGTTTGGAGGCTGAAGCAGAACAAGCCACAGCCTGATGCGGCCAC  
 AGCCATGGCCATCACCGCAGACTCAGAGACACTGCCTGAGTCGGACAGATATAACCCCGGCCCCCAAGAC  
 TTTGTGCTGAAGATGCCTGGGTCAACGCCAAGAAGTGTGCTCCCTGATGAACCAAGTGAAGAACATCG  
 CAGAGCTGGCCACCCTGTCCCTGGAACGACTCACAAACCTCCTGGGGCACTCGGGAATGCCAAGCAGCT  
 GCACGACTTCTGCACACTGCCTATGCAGACTTGGTGTCCAAAGGCAGAGTGAGAAAG

**ACGCGTACGCGGCCGCTCGAG** - GFP Tag - **GTTTAA**

**Protein Sequence:** >MG211135 representing BC026792  
 Red=Cloning site Green=Tags(s)

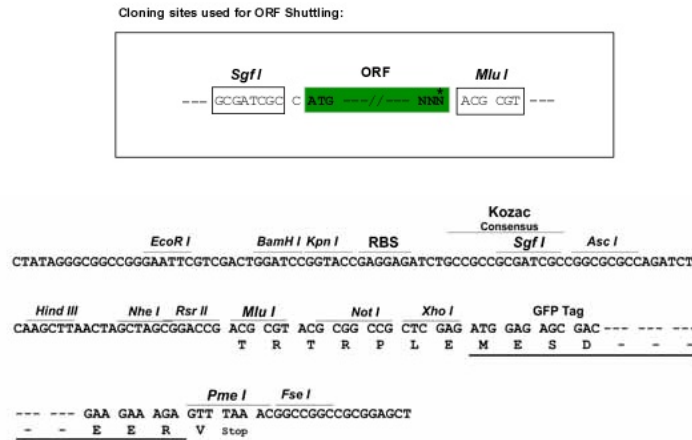
MAPLLEYERQQVLELLDSDGLVVCARGLGTDRLLYHFLRLHCHPACLVLVLTQPAEEEEYFINQLKIEGV  
 EHLPRRVNTEIASNSRYEYVTQGGIIFATSRILVVDLFGRIPSDLITGILVYRAHRIIESCQEAFILRL  
 FRQKNRKFIFAFDNAVAFDTGFCHEVERVMRNLFVRKLYLWPRFHVAVNSFLEQHKPEVVEIHVSMTPA  
 MLAIQTAILDILNACLKELKCHNPSLEVEDLSLENALGKPFDKTIRHYLDPLWHQLGAKTKSLVQDLKIL  
 RTLLQYLQYDCVTFNLLESRLATEKVFQNSGWLFLDASTSMFVNARARVYRVPDVKLNKKAKTSEKT  
 SSPEVQETKKELVLESNPKEALTDVLKEIEAENKESEALGGPGRVLCASDDRTCCQLRDYLSAGAEF  
 LLRLYRKTFEKDGKAEVWVNRKGDGPKRTTKSDKRPKAAPNKERASAKRGAPLKRKKQELTLTQVLGS  
 AEPPEDKALEEDLCRQTSSEPEGCGVEIKRESFDLNVSSDAAYGILKEPLTIIHPLGCSDPYALTRVL  
 HEVEPRYVVLDAELTFVRQLEIYRASRPKPLRVYFLIYGGSTEEQRYLTALRKEKEAFEKLIREKASM  
 VVPEEREGRDETNDLARGSAALDAPTDRKAGGQEQNGTQSSIIVDMREFRSELP SLIHRRGIDIEPVT  
 LEVGDYILTPELCVERKSVSDLIGSLHSGRLYSQCLAMSRYYRRPVLLIEFDPSKPFSLAPRGAFFQEMS  
 SSDVSSKLTLLTLHFPRLLWCPSPHATAELFEELKQNKQPDAATAMAITADSETLPESDRYNPQPQD  
 FVLKMPGVNAKNCRSLMNQVKNI AELATLSLERLTTILGHSGNAKQLHDFLHTAYADLVSKGRVRK

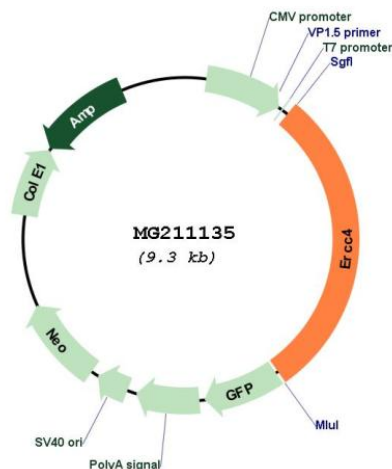
TRTRPLE - GFP Tag - V

**Restriction Sites:**

Sgfl-MluI

**Cloning Scheme:**



**Plasmid Map:**


**ACCN:** BC026792

**ORF Size:** 2720 bp

**OTI Disclaimer:** The molecular sequence of this clone aligns with the gene accession number as a point of reference only. However, individual transcript sequences of the same gene can differ through naturally occurring variations (e.g. polymorphisms), each with its own valid existence. This clone is substantially in agreement with the reference, but a complete review of all prevailing variants is recommended prior to use. [More info](#)

**OTI Annotation:** This clone was engineered to express the complete ORF with an expression tag. Expression varies depending on the nature of the gene.

**Components:** The ORF clone is ion-exchange column purified and shipped in a 2D barcoded Matrix tube containing 10ug of transfection-ready, dried plasmid DNA (reconstitute with 100 ul of water).

**Reconstitution Method:**

1. Centrifuge at 5,000xg for 5min.
2. Carefully open the tube and add 100ul of sterile water to dissolve the DNA.
3. Close the tube and incubate for 10 minutes at room temperature.
4. Briefly vortex the tube and then do a quick spin (less than 5000xg) to concentrate the liquid at the bottom.
5. Store the suspended plasmid at -20°C. The DNA is stable for at least one year from date of shipping when stored at -20°C.

**RefSeq:** [BC026792](#), [AAH26792](#)

**RefSeq Size:** 3235 bp

**RefSeq ORF:** 2720 bp

**Locus ID:** 50505

**Cytogenetics:** 16 A1

**Gene Summary:**

Catalytic component of a structure-specific DNA repair endonuclease responsible for the 5-prime incision during DNA repair. Involved in homologous recombination that assists in removing interstrand cross-link (By similarity).[UniProtKB/Swiss-Prot Function]