

## Product datasheet for **MG211132**

### Eif4g2 (NM\_013507) Mouse Tagged ORF Clone

#### Product data:

Product Type:	Expression Plasmids
Product Name:	Eif4g2 (NM_013507) Mouse Tagged ORF Clone
Tag:	TurboGFP
Symbol:	Eif4g2
Synonyms:	DAP; DAP-5; E130105L11Rik; Na; Nat; Nat1; Natm1; p97
Mammalian Cell Selection:	Neomycin
Vector:	pCMV6-AC-GFP (PS100010)
E. coli Selection:	Ampicillin (100 ug/mL)



[View online »](#)

**ORF Nucleotide Sequence:**

>MG211132 representing NM\_013507  
 Red=Cloning site Blue=ORF Green=Tags(s)

TTTTGTAATACGACTCACTATAGGGCGGCCGGAATTCGTCGACTGGATCCGGTACCGAGGAGATCTGCC  
 GCC**CGCATCGCC**

GTGGAGAGTGCATTGCAGAAGGGGTGCTTCTCGTTTCAGTGCCTTTCGGGCGGAGGAGGAAGTAGGG  
 GTGCACCTCAGCACTATCCCAAGACTGCTGGCAACAGCGAGTTCTTGGGAAAACCCAGGGCAAAACGC  
 TCAGAAATGGATTCTGCACGAAGCACTAGACGAGATGACAACCTCCGCAGCAAACAACCTCCGCAAATGAA  
 AAAGAACGACATGATGCAATCTTCAGGAAAGTAAGAGGCATACTAAATAAGCTTACTCTGAAAAGTTTG  
 ACAAGCTATGCCTTGAGCTCCTCAATGTGGGTGTAGAGTCTAACTATCCTTAAAGGGGTCACTACTGCT  
 GATTGTGGACAAAGCCTTAGAAGAGCCAAAGTATAGCTCGCTGTATGCTCAGCTATGCTGCGATTGGCA  
 GAAGATGCACCAAACCTTGTAGGGCCAGCAGAGGGTCAACCAGGACAGAAGCAAAGCACAACATTCA  
 GACGCTCTTGATTTCCAAATGCAAGATGAATTTGAAAACCGAACCAAGAAATGTTGATGCTATGATAA  
 GCGTGAAAATCCCCTCCTCCTGAGGAGGAGGAACAGAGAGCCATTGCTAAGATCAAGATGTTGGGGAAC  
 ATCAAATTCATTGGAGAAGCTTGGCAAGCTTGATCTTATTCATGAATCTATCCTTCATAAGTGCATCAAAA  
 CACTTTTGGAAAAGAAGAAGAGAGTCCAACCAAGATATGGGAGAGGATTTGGAGTGCCTCTGTAGAT  
 AATGAGGACAGTGGGACCTCGATTAGACCATGAACGAGCCAAGTCTTAATGGATCAGTACTTTGCCAGA  
 ATGTGTTCTTAATGTTAAGTAAGGAATTGCCAGCCAGGATTCGTTTCTACTGCAGGATACTGTAGAGT  
 TGCGAGAGCACCATTGGGTTCTCGCAAGGCTTTTCTTGACAATGGACCAAGACGATCAATCAAATCCG  
 TCAAGATGCAGTAAAAGATCTAGGAGTGTATTCCTGCTCCTATGGCTCAAGGGAGGAATGACTTCTTC  
 TTGGAGGGACCGTTCATGCCCAAGGATGAAAATGGATAGGGACCCACTTGGGGGACTGCTGATATGT  
 TGGACAAATGCCAGGTAGTGAATTGGTACTGGTCCAGGAGTTATCCAGGATAGATTTTCAACCAAT  
 GGGACGTCATCGTTCAAATCAGCTCTTCAATGGCCATGGGGGGCACATCATGCCTCCACGCAATCGCAG  
 TTTGGAGAGATGGGGGCAAGTTTATGAAAAGCCAGGGGCTAAGCCAGCTCTACCATAACCAAGAGTCAGG  
 GACTCTTATCCCAGCTACAAGGACAGTCGAAGGATATGCCACCTCGGTTTTCTAAGAAAAGGACAGCTTAA  
 TGCAGATGAGATTAGTTTGGGCTGCTCAGTCGTTTCTAATGAATAAAAATCAGGTGCCAAAGCTTCAG  
 CCCCAGATAACTATGATTCCTCCAGTGCACAGCCACCACGCACTCAAACACCGCTCTGGGACAGACAC  
 CTCAACTTGGTCTCAAACTAATCCACCCTTATCCAGGAAAAGCCTGCCAAGACTAGCAAAAAGCCACC  
 ACCATCAAAGGAAGAAGTAACTTAACTGACCGAAGCCGTTGTGACTGACTATCTGAACAGTGAAATGCC  
 AACGACGCTGTCAAGTGGTGTGAGAGAAATGAGAGCTCCAAAACACTTTCTTCTGAGATGCTAAGCAAAG  
 TGATCATCCTGTCACTTGATAGAAGTATGAAGATAAAGAAAAAGCAAGCTCTTAAATCAGTTTACTCAA  
 ACAGGAAGGGATAGCCACAAGTGACAACCTCATGCAGGCTTTCCTGAATGTATTGGAGCAGTGCCCCAAA  
 CTGGAGGTTGACATCCCCTTGGTGAATCTTACTTGGCACAGTTTGCAGCTCGTGTCTATAATTTAGAGT  
 TGGTGAGCATTTCGAAGTACTCAACCACTGGAGAGTGGCACCCACTTCCCTCTCTTACTTTGTCT  
 TCAACAATTAGCTAAATGCAAGACCGAGAGTGGTTAACCGAACTTTTCAACAAAGCAAGGTCAATATG  
 CAGAAAATGCTGCCAGAAATGATCAGAATAAGGATCGAATGTTGGAGATTTTGGAAAGGAAAGGACTGA  
 GTTTCTTATCCCACTCCTTAAATGGAGAAGGAACTATTGAAGCAAATTAAGCTGGATCCATCCCCTCA  
 AACTATATAAATGGATTAAGATAACATCTCTCCCAAACCTCATGTAGATAAAGGATTCGTGAACATC  
 TTAATGACCAGCTTCTTACAGTACATTTCTAGTGAAGTAAGCCACCCAGCGATGAAACAGATTCTTCT  
 CTGCTCCTTCAAAGAGCAGTTAGAGCAGGAAAAACAGCTGCTGCTCTTTTTAAGCCAGTGATGCAGAA  
 ATTTCTTCATGATCATGTGGATCTACAGGTCAGTGCCCTGTATGCTTTCAGGTGCACTGTTACAACAGC  
 AGCTTCCAAAAGGCATGTTACTTCGATTTTTTGTTCACTTCTATGACATGGAATATTGAAGAGGAAG  
 CTTTCTTAGCTTGAAGGAAGACATAACTCAAGAGTTTCCAGGAAAAGGCAAGGCTTTGTTCCAGGTGAA  
 TCAGTGGCTAACCTGGCTAGAACTGCTGAAGAAGAAGATCAGAGGAAGAAGCTGAC

**ACGCGTACGCGGCCGCTCGAG** - GFP Tag - GTTTAA

Protein Sequence: >MG211132 representing NM\_013507  
 Red=Cloning site Green=Tags(s)

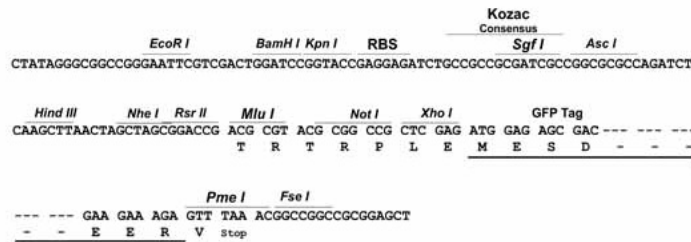
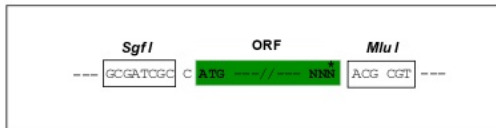
VESAI AEGGASRF SASSGGGSRGAPQHYPKTAGNSEFLGKTPGQNAQKWIPARSTRRDDNSAANNSANE  
 KERHDAIFRKVRGILNKLTPKFDKLCLELLNVGVESKILKGVILLIVDKALEEPKYSSLYAQLCLRLA  
 EDAPNFDGPA AEGQPQKQSTTFRRLI SKLQDEFENRTRNVVYDKRENPLLPEEEEEQRAIAKIKMLGN  
 IKFIGELGKLDL I HESILHKCIKTLLEKHKRVQLKDMGEDLECLCQIMRTVGPRLDHERAKSLMDQYFAR  
 MCSLMLSKELPARIRFLLQDVELREHHWVPRKAFLDNGPKTINQIRQDAVKDLGVFIPAPMAQGRNDF  
 LEGPFMPRPMKMDRDLGGLADMFGQMPGSGIGTGPGVIQDRFSPTMGRHRSNQLFNGHGGHIMPPTQSQ  
 F GEMGGKFMKSQGLSQLYHNQSQGLLSQLQGQSKDMPPRFSKKGQLNADEISLRPAQSFLMNKNQVPKLQ  
 PQITMIPPSAQPRTQTPLGQTPQLGLKTNPLIQEKPAKTSKPPPSKEELLKLEAVVTDYLNQSGNA  
 NDAVSGVREMRA PKHFLPEMLSKVIIISLDRSDEDEKASSLISLLKQEGIATSDNFMQAFNLVLEQCPK  
 LEVDIPLVKS YLAQFAARAI ISELVSI SELAQPLESGTHFPLFLLCLQQLAKLQDREWL TELFQQSKVNM  
 QKMLPEIDQNKDRMLEILEGKLSFLFLLKLEKELLKQIKLDPSPQTIYKWKDNI SPKLHVDKGFVNI  
 LMTSFLQYISSEVSPSDETDSSAPSKEQLEQEKQLLSFKPVMQKFLHDHVDLQVSALYALQVHCYNS  
 SFPKGMLLRFFVHFYDMEIEEEAFLAWKEDITQEFPGKGKALFQVNWLTWLET AEEEESEEEAD

TRTRPLE - GFP Tag - V

Restriction Sites: SgfI-MluI

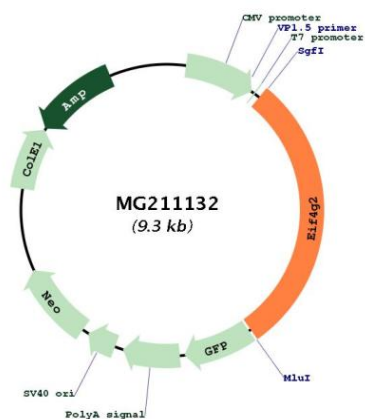
Cloning Scheme:

Cloning sites used for ORF Shuttling:



<b>ACCN:</b>	NM_013507
<b>ORF Size:</b>	2718 bp
<b>OTI Disclaimer:</b>	The molecular sequence of this clone aligns with the gene accession number as a point of reference only. However, individual transcript sequences of the same gene can differ through naturally occurring variations (e.g. polymorphisms), each with its own valid existence. This clone is substantially in agreement with the reference, but a complete review of all prevailing variants is recommended prior to use. <a href="#">More info</a>
<b>OTI Annotation:</b>	This clone was engineered to express the complete ORF with an expression tag. Expression varies depending on the nature of the gene.
<b>Components:</b>	The ORF clone is ion-exchange column purified and shipped in a 2D barcoded Matrix tube containing 10ug of transfection-ready, dried plasmid DNA (reconstitute with 100 ul of water).
<b>Reconstitution Method:</b>	<ol style="list-style-type: none"><li>1. Centrifuge at 5,000xg for 5min.</li><li>2. Carefully open the tube and add 100ul of sterile water to dissolve the DNA.</li><li>3. Close the tube and incubate for 10 minutes at room temperature.</li><li>4. Briefly vortex the tube and then do a quick spin (less than 5000xg) to concentrate the liquid at the bottom.</li><li>5. Store the suspended plasmid at -20°C. The DNA is stable for at least one year from date of shipping when stored at -20°C.</li></ol>
<b>RefSeq:</b>	<a href="#">NM_013507.3</a> , <a href="#">NP_038535.2</a>
<b>RefSeq Size:</b>	7760 bp
<b>RefSeq ORF:</b>	2721 bp
<b>Locus ID:</b>	13690
<b>UniProt ID:</b>	<a href="#">Q62448</a>
<b>Cytogenetics:</b>	7 58.0 cM
<b>Gene Summary:</b>	Translation initiation is mediated by specific recognition of the cap structure by eukaryotic translation initiation factor 4F (eIF4F), which is a cap binding protein complex that consists of three subunits: eIF4A, eIF4E and eIF4G. The protein encoded by this gene shares similarity with the C-terminal region of eIF4G, that contains the binding sites for eIF4A and eIF3; eIF4G in addition, contains a binding site for eIF4E at the N-terminus. Unlike eIF4G which supports cap-dependent and independent translation, this gene product functions as a general repressor of translation by forming translationally inactive complexes. Transgene expression of the apolipoprotein B mRNA-editing enzyme (APOBEC-1) causes extensive editing of this mRNA, which could contribute to the potent oncogenesis induced by overexpression of APOBEC-1. In vitro and in vivo studies in human indicate that translation of this mRNA initiates exclusively at a non-AUG (GUG) codon. This also appears to be true for mouse. Two alternatively spliced transcript variants that encode different isoforms have been found for this gene. [provided by RefSeq, Jul 2008]

Product images:



Circular map for MG211132