

Product datasheet for **MG211092**

Eps15 (NM_007943) Mouse Tagged ORF Clone

Product data:

Product Type:	Expression Plasmids
Product Name:	Eps15 (NM_007943) Mouse Tagged ORF Clone
Tag:	TurboGFP
Symbol:	Eps15
Synonyms:	2410112D09Rik
Mammalian Cell Selection:	Neomycin
Vector:	pCMV6-AC-GFP (PS100010)
E. coli Selection:	Ampicillin (100 ug/mL)



[View online »](#)

ORF Nucleotide
Sequence:

>MG211092 representing NM_007943
Red=Cloning site Blue=ORF Green=Tags(s)

TTTTGTAATACGACTCACTATAGGGCGGCCGGAATTCGTCGACTGGATCCGGTACCGAGGAGATCTGCC
GCCCGCATCGCC

ATGGCTGCGGCAGCCAGCTCTCCCTGACACAGTTGTCAAGTGGGAATCCTGTATATGAAAACTACTACA
GACAGGTTGAGGCAGGCAATACTGGAAGGGTGTGGCGTTAGATGCTGCTGCATTCTGAAAAAGTCAGG
GCTCCAGACTTGATTCTTGAAAAGATTTGGGATTTAGCTGACACAGATGGCAAAGGTGCTCTGAGCAAA
CAAGAATCTTTGTTGCTTACGGCTTGTGGCATGTGCTCAGAATGGACTGGAAGTTTCACTGAGTAGCC
TAAGTCTGGCTGTTCTCCACCAAGATTTCACTGACTCCAGCAGTCCGTTGCTAACCAGTGGGCCCTCAGT
TGCTGAGCTCCCGTGGGCTGTAAGTCTGAAGATAAAGCCAAATATGATGCAATTTTTGACAGTTTAAAGC
CCAGTGGATGGATTTTTGTCTGGTGATAAAGTGAACAGTGTGCTCAACTCTAAGTTACCTGTGGAAA
TCCTTGAAGAGTTTGGGAGTTGAGTGATTTGACCACGATGGAAGCTGGACAGAGATGAGTTTGCAGT
TGCCATGTTTTTGGTATACTGTGACTGGAGAAAGAACCTGTGCCAATGCTCTTGCTCCAGCCTTGGTG
CCACCTTCTAAGAGAAAAACGTGGGTTGTATCCCTGCAGAAAAAGCTAAATATGATGAAATTTTTCTGA
AAACTGATAAGGATATGGATGGATATGTGTCTGGACTGGAGGTCCGTGAAACCTTCTGAAAAACAGGTTT
ACCTTCTGCCTTGTAGCCACATTTGGTCACTATGTGACACAAAAGGGCTGTGGGAAGCTTTCAAAGAC
CAGTTTGCCTTGGCTTTTCACTTAATCAATCAGAAGTTAATAAAAGGCATTGACCCTCCTCATAGTCTCA
CTCCTGAGATGATTCCACCATCAGACAGATCCAGTTTACAAAAGAATCAGAGGATCAAGTCTGTTGC
AGATTTTTCTGCTATTAAGGAAGTAGATACCCTTAACAATGAAATAGTTGACCTGCAGAGGGAAAAGAAC
AATGTGGAGCAGGACCTTAAGAGAAAGGAAAGACACAGTTAAGCAGAGGACCAGTGAAGTTTCAAGTCTTC
AAGATGAAGTTCAAAGGGAGAGTATTAATCTACAAAACCTGCAGGCCAGAACAGCAGGTCAGGATCTTC
CCTGGGTGAACCTGGATGAGCAGAAAAGCCAGCTGGAGGAGCAGCTCCAGGAAGTCAGAAAAAAGTGTGCT
GAGGAGGCCAGCTGATTTCTTCCCTGAAAGCAGAAAATACTAGTCAAGAATCTCAGATCTCCAGTTATG
AGGAAGAAGTGTGAAAGCTAGAGAAGAACTAAGTCGCCTACAACAAGAAAACAGCACAATTGGAAGAAAAG
TGTGGAGTCAGGGAAGGCTCAGCTGGAACCTTTCAGCAGCACCTACAAGAGTCACAACAGGAAATCAGC
TCAATGCAAAATGAGATTGGAAATGAAAGATCTGGAAACTGATAATAACCAATCAAATGGAGCAGTAGCC
CACAAAGCGTTCTTGTAAATGGTGTACAGATTACTGTAGCCTCAGCACCAGCAGCAGTGAACAGCCAA
CTTCAACGAACATGCTGAAGGCCAAAACAACCTAGAGTCTGAACCCACACACCAGGAGTCCCTCAGTAAGA
AGTAGTCTGAAATCGCACCTTCTGATGTGACTGATGAAAGTGAAGTGTGACTGTGGCTGGTAATGAGA
AAGTTACTCCGAGATTTGACGATGACAAGCACTAAAAGAGGAAGATCCATTTAATGTAGAATCAAGTTC
ACTGACAGATGCAGTTGCAGATACAAACTTGGATTTTTTCCAGTCTGATCCTTTTGTGGCAGTGATCCT
TTCAAGGATGATCCTTTTGGAAAATGATCCATTTGGTGGTGACCCTTTCAAAGGCTCAGATCCTTTTG
CGTCTGATTGCTTCTTAAAGCAGACTTCTACTGATCCTTTTACCCTTCAAGTACGGACCCTTTCAGTGC
ATCCAGCAACAGCAGTAATACATCGGTAGAAAATTTGGAAGCACAATGACCATTTGCTCCTGGTGGAAACA
GTTGTTGCTGCAGCGAGTGATTCAGCCACAGACCCTTTGCTTCTGTTTTCGGAAATGAATCATTGGAG
ATGGATTTGCTGACTTCAGCACATTATCAAAGGTCAACAATGAAGATGCTTTTAACTCCTACCATATCAAG
TTCTACCAGCAGTGTGACCATTGCAAAACCTATGTTAGAGGAAAACAGCCAGCAAGAGTGAAGATGTGCCT
CCAGCACTGCCGCCAAAAGTTGGCACTCCAACAAGACCTTGCCCGCCACCCCTGGGAAAAGACCCATCA
ACAAAATTGGATTCTTCTGATCCCTTAAACTGAATGATCCATTTTCCAGCCTTTCCAGGCAATGATAGTCC
CAAAGAAAAGATCCTGATATGTTTTGTGATCCATTCCTTCTTCTACCCTACCAATAAAGAGGCTGAC
CCAAGCAATTTTGTAACTTCAGTGCTTATCCCTCTGAAGAAGATATGATTGAATGGCAAAAAGGGAAA
GTGAGCGGGAAGAAGAACAGAGGCTTGCCAGACTAAATCAGCAGGAGCAAGAAGACTTGGAACTGGCCAT
TGCACTTAGCAAACTGAGATCTCAGAAGCA

ACGCGTACGCGGCCGCTCGAG - GFP Tag - GTTTAA

Protein Sequence: >MG211092 representing NM_007943
 Red=Cloning site Green=Tags(s)

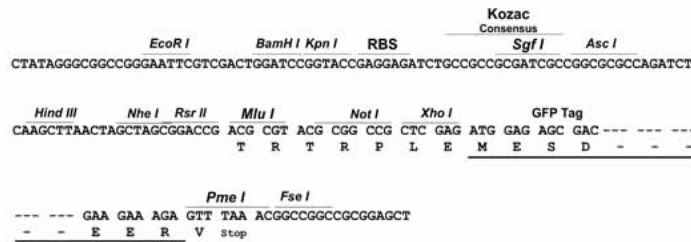
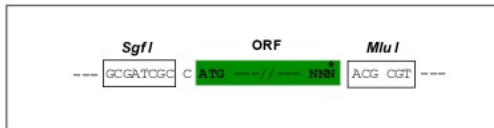
MAAAAQLSLTQLSSGNPVYEKYYRQVEAGNTGRVLALDAAFLKKSGLPDLILGKIWDLADTDGKGVLSK
 QEFFVALRLVACAQNGLEVLSLSSLAVPPPRFHDSSSPLLTSGPSVAELPWAVKSEDKAKYDAIFDLSL
 PVDGFLSGDKVKPVLLNSKLPVEILGRVWELSDIDHDGKLDREFAVAMFLVYCALEKEPVMSLPPALV
 PPSKRKTWVVSAPAEKAKYDEIFLKTDKMDGYVSGLEVRETFLLKTLGPSALLAHIWLSLCTDKGCGKLSKD
 QFALAFHLINQKLIKIDPPHSLTPEMIPPSDRSSLQKNITGSSPVADFSAIKELDTLNNEIVDLQREKN
 NVEQDLKEKEDTVKQRTSEVQDLQDEVQRESINLQKLQAQKQQVQELLGELDEQKAQLEEQLQEVKCKCA
 EEAQLISSLKAIEITSQESQISSYEEELLKAREELSRLLQETAQLEESVESGKAQLEPLQQHLQESQQEIS
 SMQMRLEMKDLETDNNQSNWSSSPQSVLVNGATDYCSLSTSSSETANFNEHAEGQNNLESEPTHQESSVR
 SSPEIAPSDVTDSEAVTVAGNEKVTFRFDDDKHSKEEDPFNVSSSLTDAVADTNLDFQSDPFVFGSDP
 FKDDPFKIDPFGGDPFKGSDPFASDCFFKQSTDPFSTSTDPFSASSNSNTSVETWKHNDPFAPGGT
 VVAASDSATDPFASVFGNESFGDGFADFSTLSKVNNEDAFNPTISSSTSVYIAKPMLEETASKSEDVP
 PALPPKVGTPTRPCPPPGKRPINKLSDSPLKLNDFPFQFPNGDSPKEKDPDMFCDFPFTSSTTTNKEAD
 PSNFANFSAYPSEEDMIEWAKRESEREEEQRLARLNQQEQEDLELAIALSKSEISEA

TRTRPLE - GFP Tag - V

Restriction Sites: SgfI-MluI

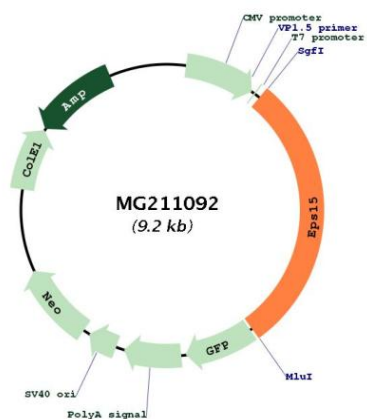
Cloning Scheme:

Cloning sites used for ORF Shuttling:



ACCN:	NM_007943
ORF Size:	2691 bp
OTI Disclaimer:	The molecular sequence of this clone aligns with the gene accession number as a point of reference only. However, individual transcript sequences of the same gene can differ through naturally occurring variations (e.g. polymorphisms), each with its own valid existence. This clone is substantially in agreement with the reference, but a complete review of all prevailing variants is recommended prior to use. More info
OTI Annotation:	This clone was engineered to express the complete ORF with an expression tag. Expression varies depending on the nature of the gene.
Components:	The ORF clone is ion-exchange column purified and shipped in a 2D barcoded Matrix tube containing 10ug of transfection-ready, dried plasmid DNA (reconstitute with 100 ul of water).
Reconstitution Method:	<ol style="list-style-type: none">1. Centrifuge at 5,000xg for 5min.2. Carefully open the tube and add 100ul of sterile water to dissolve the DNA.3. Close the tube and incubate for 10 minutes at room temperature.4. Briefly vortex the tube and then do a quick spin (less than 5000xg) to concentrate the liquid at the bottom.5. Store the suspended plasmid at -20°C. The DNA is stable for at least one year from date of shipping when stored at -20°C.
RefSeq:	NM_007943.3 , NP_031969.1
RefSeq Size:	5193 bp
RefSeq ORF:	2694 bp
Locus ID:	13858
UniProt ID:	P42567
Cytogenetics:	4 C7
Gene Summary:	Involved in cell growth regulation. May be involved in the regulation of mitogenic signals and control of cell proliferation. Involved in the internalization of ligand-inducible receptors of the receptor tyrosine kinase (RTK) type, in particular EGFR. Plays a role in the assembly of clathrin-coated pits (CCPs). Acts as a clathrin adapter required for post-Golgi trafficking. Seems to be involved in CCPs maturation including invagination or budding. Involved in endocytosis of integrin beta-1 (ITGB1) and transferrin receptor (TFR); internalization of ITGB1 as DAB2-dependent cargo but not TFR seems to require association with DAB2.[UniProtKB/Swiss-Prot Function]

Product images:



Circular map for MG211092