

Product datasheet for **MG211067**

Hmgcr (NM_008255) Mouse Tagged ORF Clone

Product data:

Product Type:	Expression Plasmids
Product Name:	Hmgcr (NM_008255) Mouse Tagged ORF Clone
Tag:	TurboGFP
Symbol:	Hmgcr
Synonyms:	HMG-CoAR; Red
Mammalian Cell Selection:	Neomycin
Vector:	pCMV6-AC-GFP (PS100010)
E. coli Selection:	Ampicillin (100 ug/mL)



[View online »](#)

ORF Nucleotide Sequence:

>MG211067 representing NM_008255
 Red=Cloning site Blue=ORF Green=Tags(s)

TTTTGTAATACGACTCACTATAGGGCGGCCGGAATTCGTGCGACTGGATCCGGTACCGAGGAGATCTGCC
 GCC**CGCATCGCC**

ATGTTGTCAAGACTTTTTCCGGATGCATGGCCTCTTCGTGGCCTCCACCCCTGGGAAGTTATTGTGGGAA
 CAGTGACACTTACAATCTGTATGATGTCCATGAACATGTTACCCGCAACAACAAGATCTGTGGCTGGAA
 TTATGAGTGCCCCAAATTTGAAGAGGACGTGCTGAGCAGCGACATCATCATCCTGACGATAACCGGTGC
 ATCGCCATCCTGTACATTTACTTCCAGTTCAGAATCTACGGCAGCTTGGGTCCAAGTACATTCTGGGTA
 TTGCTGGCCTCTTCAAAATTTCTCAAGCTTTGTCTTTCAGTACAGTCGTCAATTCATTTCTCGACAAAGA
 ACTGACAGGCTTAAATGAAGCTTTGCCCTTTTTCTGCTCTTGATTGACCTTTCTAGAGCGAGTGCATTA
 GCAAAGTTTGGCCTCAGTCAAATTCACAGGATGAAGTAAAGGAAAATATAGCTCGTGGAAATGGCAATCC
 TGGGCCACATTCACTCTTACGCTCTTGTGGAATGCCTTGTGATTGGAGTTGGCACCATGTCAGGCGT
 CCGCCAGCTGGAGATCATGTGCTGCTTCGGCTGCATGTCAGTGTGGCCAACTACTTTGTGTTTCATGACA
 TTCTTCCCGCCTGTGTGCTGCTGCTAGAGCTTTCTCGTGAAGCCGTGAGGGTTCGTCGAATTTGGC
 AGCTCAGCCATTTTGGCAGATTTTGAAGAAGAAGAAAATAAACCAAACCCCGTAACCCAAAGGGTCAA
 GATAATTATGCTTTAGGCTTGGTCTTGTTCACGCTCATAGTCGCTGGATAGCTGATCCTTCTCCTCAG
 AACAGCACAGCGGAGCAGGCTAAGGTTTCTTGGGTCTGGACGAAGATGTGTCCAAGAGAATTGAACCAA
 GTGTTTCTCTCTGGCAGTTTTATCTCCAAGATGATCAGCATGGACATTGAGCAAGTGATTACCCTGAG
 TTTAGCCTTCTTTGGCTGTCAAGTATATTTCTTTGAACAAGCAGAGACAGAATCGACACTGTCATTA
 AAAATCCTATACGCTCTCCCGTCGTGACCTCAAAGAAAGCTCAAGACAAGTGTGTAGAGTGGAGGAAAG
 TGAGGTTATAAAACCATTAGTGGTGAAGCAGAGACTACAAGCAGAGCTACGTTTGTGCTTGGGGCTTCT
 GTAGCCAGCCCTCCATCCGCCCTGGGGACACAGGAGCCTGGAATTGAACTCCCCATCGAGCCACGACCTA
 ATGAAGAATGTCTGCAGATACTGGAGAATGCAGAGAAAGGTGCAAAGTTCCTTAGTGATGCAGAGATCAT
 CCAGTTGGTCAATGCCAAGCATATCCCAGCTTACAATTTGAAACTCTAATGGAAACTCATGAACGTGGT
 GTGTCTATTCGCCGCGAGCTCCTCTCCACAAGCTTGCAGAGCCGCTCCTCTACAGTACCTGCCTTACA
 GAGATTATAATTATCCTTGGTGTGGGAGCTTGTGTGAGAATGTGATCGGATATATGCCCATCCCTGT
 TGGAGTGGCAGGCTCTGTGCCTGGATGGGAAGGAGTACCAGGTGCCGATGGCAACGACGAAGGCTGT
 CTTGTGGCCAGCACTAACAGAGGCTGCAGAGCCATAAGCCTTGGTGGAGGTGCCAGCAGCCGGTCTTG
 CAGATGGGATGACTCGAGGCCAGTGGTGCCTTCCACGTGCTTGTGACTCTGCAGAAGTAAAGACCTG
 GCTTGAACACCTGAAGGGTTGCAAGTATAAAGGAGGCTTTGATAGCACCAGCAGATTTGCTCGTCTA
 CAGAACTCCACGTGACGATGGCAGGACGCAACCTCTATATCCGTTTCCAGTCCAGGACGGGGGACGCCA
 TGGGATGAACATGATCTCTAAGGGTACGGAGAAAGCACTGCTGAAGCTTCAAGGATTTCTTCTGACAT
 GCAGATTCTGGCAGTCAAGGAACTATTGCACCGACAAGAAGCCTGCTGCCATAAACTGGATCGAAGGA
 CGAGGAAAGACTGTGGTTGTGAAGCCGTCATTCAGCCAAGGTGGTGAAGAGGTGTTAAAGACAATA
 CGGAAGCTATGGTTGACGTAACATTAAACAAGATCTTGTGGGCTCGCCATGGCTGGGAGCATAGGCGG
 CTACAACGCCCACGCAGCAACATTGTCACTGCTATCTACATCGCATGTGGCCAGGATGCAGCAGAGAAT
 GTGGGGAGTTCAAAGTATTACTTTAATGGAAGCCAGTGGTCCCACAAATGAAGACTTATATATCAGCT
 GCACCATGCCATCGATAGAGATAGGAACCGTGGTGGTGGGACCAACCTTCTACCTCAGCAAGCCTGCCT
 GCAGATGTAGGTGTTCAAGGAGCATGCAAGACAATCCTGGAGAAAACGCACGGCAGCTTGCCCGAATT
 GTATGTGGCACTGTGATGGCTGGTGTGCTTGTGATGGCAGCCTTGGCAGCAGGACATCTTGTGAGAA
 GTCACATGGTTCACAACAGATCAAAGATAAATTTACAAGATCTTCAAGGAACGTGCACCAAGAAGGCAGC
 T

ACGCGTACGCGGCCGCTCGAG - GFP Tag - **GTTTAA**

Protein Sequence: >MG211067 representing NM_008255
 Red=Cloning site Green=Tags(s)

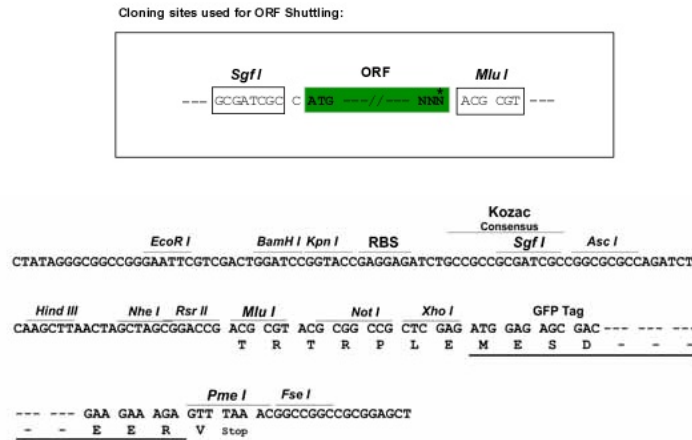
MLSRLFRMHGLFVASHPWEVIVGTVTLTICMMSMNMTGNNKICGWNIECPKFEEDVLSDDIIILTITRC
 IAILYIYFQFQNLRLQSGKYILGIAGLFTIFSSFVSTVVIHFLDKELTGLNEALPFFLLIDLRSAL
 AKFALSSNSQDEVRENIARGMAILGPTFTLDALVECLVIGVGTMSGVRQLEIMCCFGCMSVLANYFVMT
 FFPACVSLVLELSRESREGPIWQLSHFARVLEEEENKPNPVTQRVKIIMSLGLVLVHAHSRWIADPSQ
 NSTAEQAKVSLGLDEDVSKRIEPSVSLWQFYLSKMI SMDIEQVITLSLAFLLAVKYIFFEQATESTLSL
 KNPITSPVVTSKKAQDNCCRPELLVRRNQKLSVEEDPGANQERKVEVIKPLVVEAETTSRATFVLGAS
 VASPPSALGTQEPGIELPIEPRNNEECLILENAEKGAKFLSDAEIIQLVNAKHIPAYKLETLMETHERG
 VSIRRQLLSTKLAEPSSLQYLPYRDYNSLVMGACCENVI GYMPIPVGVAGPLCLDGKEYQVPMATTEGC
 LVASTNRGCRAISLGGGASSRVLADGMTRGPVVRPRACDSA EVKTWLETPEGFAVIKEAFDSTSRFARL
 QKLHVTMAGRNL YIRFQSRGTGAMGMNMI SKGTEKALLKLEFFPDMQILAVSGNYCTDKKPAAINWIEG
 RGKTVVCEAVIPAKVVREVLKTTTEAMVDVNINKNLVGSAMAGSIGGYNAHAANI VTAIYIACGQDAQN
 VGSSNCITLMEASGPTNEDLYISCTMPSIEIGTVGGGTNLLPQQACLQMLGVQGACKDNPGENARQLARI
 VCGTVMAGELSLMAALAAGHLVRSHMVHNRSKINLQDLQGTCTKAA

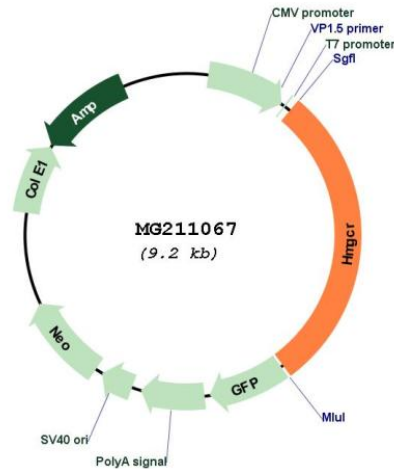
TRTRPLE - GFP Tag - V

Restriction Sites:

SgfI-MluI

Cloning Scheme:



Plasmid Map:


ACCN: NM_008255

ORF Size: 2661 bp

OTI Disclaimer: The molecular sequence of this clone aligns with the gene accession number as a point of reference only. However, individual transcript sequences of the same gene can differ through naturally occurring variations (e.g. polymorphisms), each with its own valid existence. This clone is substantially in agreement with the reference, but a complete review of all prevailing variants is recommended prior to use. [More info](#)

OTI Annotation: This clone was engineered to express the complete ORF with an expression tag. Expression varies depending on the nature of the gene.

Components: The ORF clone is ion-exchange column purified and shipped in a 2D barcoded Matrix tube containing 10ug of transfection-ready, dried plasmid DNA (reconstitute with 100 ul of water).

Reconstitution Method:

1. Centrifuge at 5,000xg for 5min.
2. Carefully open the tube and add 100ul of sterile water to dissolve the DNA.
3. Close the tube and incubate for 10 minutes at room temperature.
4. Briefly vortex the tube and then do a quick spin (less than 5000xg) to concentrate the liquid at the bottom.
5. Store the suspended plasmid at -20°C. The DNA is stable for at least one year from date of shipping when stored at -20°C.

RefSeq: [NM_008255.1](#), [NP_032281.1](#)

RefSeq Size: 3996 bp

RefSeq ORF: 2664 bp

Locus ID: 15357

UniProt ID: [Q01237](#)

Cytogenetics: 13 50.65 cM

Gene Summary:

Transmembrane glycoprotein that is the rate-limiting enzyme in cholesterol biosynthesis as well as in the biosynthesis of nonsterol isoprenoids that are essential for normal cell function including ubiquinone and geranylgeranyl proteins.[UniProtKB/Swiss-Prot Function]