

## Product datasheet for **MG211063**

### **Pik3c3 (NM\_181414) Mouse Tagged ORF Clone**

#### **Product data:**

Product Type:	Expression Plasmids
Product Name:	Pik3c3 (NM_181414) Mouse Tagged ORF Clone
Tag:	TurboGFP
Symbol:	Pik3c3
Synonyms:	5330434F23Rik; Vps34
Mammalian Cell Selection:	Neomycin
Vector:	pCMV6-AC-GFP (PS100010)
E. coli Selection:	Ampicillin (100 ug/mL)



[View online »](#)

**ORF Nucleotide Sequence:**

>MG211063 representing NM\_181414  
 Red=Cloning site Blue=ORF Green=Tags(s)

TTTTGTAATACGACTCACTATAGGGCGGCCGGAATTCGTGACTGGATCCGGTACCGAGGAGATCTGCC  
 GCC**CGGATCGCC**

ATGGGGGAGGCGGAGAAGTTCCACTACATCTACAGCTGTGACCTGGACATCAACGTGCAGCTGAAGATAG  
 GGAGCTTGGAAGGAAGAGAGAACAAGAGCTATAAAGCTGTCCTAGAAGATCCCATGTTAAAGTTTTTC  
 TGGGCTATACCAAGAGACATGCTCCGACCTCTATGTGACTTGTCAAGTGTGGTGAAGGGAAGCCCTG  
 GCCTTACCAGTCAGAACATCCTACAAGCGTTTAGTACAAGATGGAATTGGAACGAGTGGCTGAACTTC  
 CGGTGAAGTACCCTGACCTGCCAGGAATGCCAAGTGGCCTTGACTATATGGGATGTGTATGGACGGG  
 AAGCGCTGTGCCAGTGGGAGGAACAACCGTGTGCTCTTTGAAAATATGGCATGTTTCGCCAAGGAATG  
 CATGACTTGAAGTCTGGCTAACGTGGAGGCAGATGGTCTGAACTACAAGAATCCCGCAGAACAA  
 GCAGCACACTGTCAGAAGATCAGATGAGCCGCTCGCAAGCTCACCAAGGCTCATCGCAAGGACACAT  
 GGTGAAAGTGGATTGGCTGGACAGATTAACATTTAGAGAGATAGAAATGATAAATGAGAGTGAGAAACGA  
 AGCTCTAATTTTCACTGACTTGTGGTTGAGTTTCGCTGTGTCAAGTGCATGACAAGGAGATGGCATTG  
 TTTACTATGAAAAGGATGGTGACGAATCATCTCCAATTTAACAGTTTTGAGTTAGTAAAAGTTCTCTGA  
 TCCTCAAATGTCTATGGAGAATTTAGTGGAGAGCAACACCACAAGCTTGCTCGGAGCTTAAAGAGCGGG  
 CCATCTGACCACGATCTCAAACCAACGCTACCACAAGAGATCAGCTAAATATTATTGTGAGTTACCCAC  
 CAACCAAGCAACTCACATATGAAGAACAAGATCTTGTGGAAATTTAGATATTACTTACTAATCAAGA  
 AAAAGCTCTGACGAAGTCTTGAAGTGTGTTAATTGGGACCTGCCCCAGGAGGCCAAGCAGGCCCTGGAA  
 CTTCTGGGAAAGTGAAGCCAATGGATGTAGAGGACTCCCTGGAGCTGCTCTCTCTCATTACACCAACC  
 CCACCTGAGGGCTACGCTGTGGCCGCTGAGGCAGGCGATGATGAGGATTTGCTGATGACTTACTT  
 GCAGCTGGTCCAGGCTCTGAAATATGAAAACCTTGTGATGACATAAAGAATGGTTTGGAACTACCAAGAAA  
 GATAGTCAAACCTCAGCATCAGAAAGTCTGTCAAATCTGGAGTCAAGTCTGGAGACATAGATAGCTCCC  
 AAATTATAACCAACCCTCTCTCCCGTGGCCTCCCTCCTCCTGCATCTAAAGCAAAGGAAGTTCCGA  
 TGGGAAAATCTCGAGCAAGATCTATGTACGTTCTTGTATCAAGAGCCTGTAAGAACTCAACACTGGCT  
 AATTTATTTACTGGTATGTGATAGTGGAGTGTGAAGATCAGGACACCCAGCAGCGGGACCCAAAGACTC  
 ACGAGATGTACCTGAACGTGATGAGGCGCTTCAAGCAAGCCTTGTCAAGGGTGACAAGTCTGTGAGAGT  
 CATGCGCTCCCTGCTGGCGGCTCAGCAGACCTTTGTAGATCGCCTGGTCCATCTGATGAAGGCGGTGCAG  
 AGAGAAAGTGGGAACCGAAGAAGAAGAATGAGAGACTTCAGGCCTTGTGGAGATAATGAGAAAATGA  
 ACTTATCAGATGTGGAACCTGATCCATTGCCGCTGGAGCCACAGGTGAAAATAAGGGGCATCATCCCGGA  
 AACAGCTACCCCTGTTCAAGAGTGTCTTATGCCTGCCAGCTGTTCTTCAAGACTGAAGATGGAGGCAAA  
 TACCCAGTATTTTCAAGCATGGAGACGACTTGCCTCAAGATCAGCTTATTTCTCAGATCATCTCCCTCA  
 TGGACAAGCTGTTACGGAAGAAAACCTGGATTGAAATTTGACCCCATACAAGGTGTTAGCCACTAGCAC  
 AAAACATGGCTTCATGCAGTTCATCCAGTCGGTTCCTGTCGAGAAGTTCCTTGACACAGAGGGAAGCATT  
 CAGAACTTTTTCAGGAAATATGCCCCAGTGAGACTGGACCCTATGGCATCAGTGCAGAGGTCATGGACA  
 CTTACGTTAAAAGCTGTGCTGGATACTGTGTGATTACGTACATTTTGGAGTTGGAGACCGGCACCTGGA  
 TAACCTTTTGTAAACAAAGACAGGCAAACCTTCCATATAGATTTCCGGTATATTTTGGGTCGAGATCCG  
 AAGCCCTCCCTCCTCCGATGAAGCTGAACAAGGAGATGGTGAAGGGATGGGTGGCACCCAGAGTGAGC  
 AGTACCAAGAGTTCGAAAGCAGTGTACACAGCCTTCTCCACCTGCGAAGGTATTCCAATCTGATCTT  
 GAACCTTGTCTCCTTGTGTTGATGCAAAACATCCAGATATTGCTCTTGAACCAGATAAACTGTAAAA  
 AAGGTTACAGGATAAGTTCGCGCTGGACCTGTCAGATGAGGAGGCTGTGCACTACATGCAGAGTCTGATCG  
 ACGAGAGCGTCCACGCACTGTTCCGCGCGTGGTGGAGCAGATCCATAAGTTTGGCCAGTACTGGAGAAA  
 A

**ACGCGTACGCGGCCGCTCGAG** – GFP Tag – **GTTTAA**

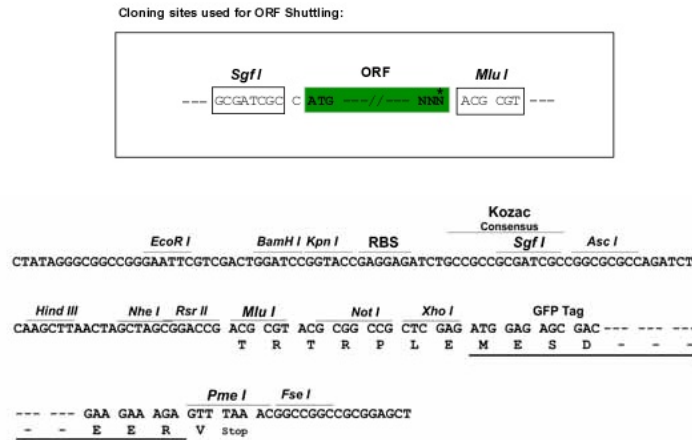
Protein Sequence: >MG211063 representing NM\_181414  
 Red=Cloning site Green=Tags(s)

MGEAEKFHYIYSCDLINVLKIGSLEGGKREQKSYKAVLEDPMLKFSGLYQETCSDLVYTCQVFAEGKPL  
 ALPVRTSYKAFSTRWNWNEWLKLVPKYKPDLPNAQVALTIWDVYGPASVAVPVGGTTVSLFGKYGMFRQGM  
 HDLKVWPVNEADGSEPTRTPGRTSSTLSEDMRSLAKLTKAHRQGHMVKVDWLDRLTFREIEMINESEKR  
 SSNFMYLMVEFRCVKCDDKEYGIVYVEKDGDESSPILTSFELVKVPDPQMSMENLVESKHHKLARSLRSG  
 PSDHDLKPNATTRDQLNIIVSYPPTKQLTYEEQDLVWKFYYLTNQEKALTKFLKCVNWDLPQEAQALE  
 LLGKWKPMDEVDSLELLSSHYNPTVRRYAVARLRQADDEDLLMYLLQLVQALKYENFDDIKNGLEPTKK  
 DSQTSASELSNSGVSSGDIDSSQIITNPLPPVASPPASKAKEVSDGENLEQDLCTFLISRACKNSTLA  
 NYLYWYVIVECEDQDTQQRDPKTHEMYLNMRRFSQALLKGDKSVRVMRSLAAQQTfVDRLVHLMKAVQ  
 RESGNRKKKNERLQALLGDNEKMNLSDELIPLEPQVKIRGIIPETATLFSALMPAQLFFKTEDGGK  
 YPVIFKHGDDLQDQILQIISLMDKLLRKENLDLKLTPYKVLATSTKHGFMQFIQSVPAEVLDTEGSI  
 QNFFRKYAPSETGPYGISAEVMDTYVVKSCAGYCVITYILGVGDRHLDNLLLTKTGKLFHIDFGYILGRDP  
 KPLPPPMKLNKEMVEGMMGTQSEYQEFRKQCYTAFHLHRRYSNLILNLFSLMVDANIPDIALEPDKTVK  
 KVQDKFRLDLSDEEAVHYMQSLIDESVHALFAAVVEQIHKFAQYWRK

TRTRPLE - GFP Tag - V

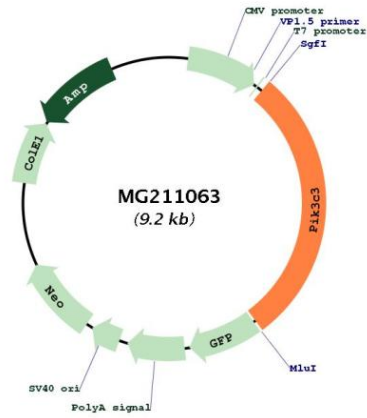
Restriction Sites: SgfI-MluI

Cloning Scheme:



<b>ACCN:</b>	NM_181414
<b>ORF Size:</b>	2661 bp
<b>OTI Disclaimer:</b>	The molecular sequence of this clone aligns with the gene accession number as a point of reference only. However, individual transcript sequences of the same gene can differ through naturally occurring variations (e.g. polymorphisms), each with its own valid existence. This clone is substantially in agreement with the reference, but a complete review of all prevailing variants is recommended prior to use. <a href="#">More info</a>
<b>OTI Annotation:</b>	This clone was engineered to express the complete ORF with an expression tag. Expression varies depending on the nature of the gene.
<b>Components:</b>	The ORF clone is ion-exchange column purified and shipped in a 2D barcoded Matrix tube containing 10ug of transfection-ready, dried plasmid DNA (reconstitute with 100 ul of water).
<b>Reconstitution Method:</b>	<ol style="list-style-type: none"><li>1. Centrifuge at 5,000xg for 5min.</li><li>2. Carefully open the tube and add 100ul of sterile water to dissolve the DNA.</li><li>3. Close the tube and incubate for 10 minutes at room temperature.</li><li>4. Briefly vortex the tube and then do a quick spin (less than 5000xg) to concentrate the liquid at the bottom.</li><li>5. Store the suspended plasmid at -20°C. The DNA is stable for at least one year from date of shipping when stored at -20°C.</li></ol>
<b>RefSeq:</b>	<a href="#">NM_181414.6</a>
<b>RefSeq Size:</b>	3102 bp
<b>RefSeq ORF:</b>	2664 bp
<b>Locus ID:</b>	225326
<b>UniProt ID:</b>	<a href="#">Q6PF93</a>
<b>Cytogenetics:</b>	18 B1
<b>Gene Summary:</b>	Catalytic subunit of the PI3K complex that mediates formation of phosphatidylinositol 3-phosphate; different complex forms are believed to play a role in multiple membrane trafficking pathways: PI3KC3-C1 is involved in initiation of autophagosomes and PI3KC3-C2 in maturation of autophagosomes and endocytosis. Involved in regulation of degradative endocytic trafficking and required for the abscission step in cytokinesis, probably in the context of PI3KC3-C2. Involved in the transport of lysosomal enzyme precursors to lysosomes. Required for transport from early to late endosomes (By similarity). [UniProtKB/Swiss-Prot Function]

Product images:



Circular map for MG211063