

## Product datasheet for **MG211048**

### Manba (NM\_027288) Mouse Tagged ORF Clone

#### Product data:

Product Type:	Expression Plasmids
Product Name:	Manba (NM_027288) Mouse Tagged ORF Clone
Tag:	TurboGFP
Symbol:	Manba
Synonyms:	2410030O07Rik; B930014J03Rik; Bmn
Mammalian Cell Selection:	Neomycin
Vector:	pCMV6-AC-GFP (PS100010)
E. coli Selection:	Ampicillin (100 ug/mL)



[View online »](#)

**ORF Nucleotide Sequence:**

>MG211048 representing NM\_027288  
 Red=Cloning site Blue=ORF Green=Tags(s)

TTTTGTAATACGACTCACTATAGGGCGGCCGGAATTCGTCGACTGGATCCGGTACCGAGGAGATCTGCC  
 GCC**CGCATCGCC**

ATGCATCTTCACCTGCTCTTGATATTGGCGCTATTTCCGGCCGGTGCCTGGTGGCAGGTCCTAGCTACA  
 GCCTGAGCGGGAGCTGGCGGGTGAAGCAACGGGAATGGCTCCCTGGAGCTACCGGGACTGTCCCGGCTA  
 TGTGCACAGCGCCCTGCACCAGCACGGGCTGATCCAGGATCCTTACTACAGATTTAATGACCTGAACTAT  
 AGATGGATTTCTTAGATAAACTGGACCTACAGCACGGAATTTAAAATCCCCTTTAATCTCAGTGAATGGC  
 AGAAGGTAAAGTTGATCTTTGATGGAGTTGACACGGTTGCAGAAATCCTGTTCAACAATGTCACCATTGG  
 GAAGACAGACAACATGTTCACTGGATACAGCTTTGACGTCACCAACGTAGTCAAAGACGTGAACTCCTTA  
 AAGCTGCAGTCCGGTCAGCAGTGCAGTATGCAGAGTGCAGAGCAAGGCTCACACTAGCTACCGGGTGC  
 CCCAGAGTGCCTCCGGTGGAGCAGAAGGTGAATGTCACGTCAACTTCATCCGAAAGGCACAGTGTTC  
 CTTGACTGGGACTGGGGCCCTTCTTCCCTCTCAGGGAATCTGAAAGATGTTAGAATCGAAGCCTAT  
 AACATTGCTCATCTGGATTACCTCACGTTTTTGGCAGTATATGATAACGCTTCTCAGGCCTGGAATATTG  
 AAATAGAGGCTTCTTTGATGTCGCCAGCTCGAAGTCCGTTAGTGGTCAGGTGACAGTAGCCATCCCTCA  
 ACTGAAAACACAGCAGACAAACGACATTGAACTTCAACAAGAGCAAAGGATTGTTAACTACTGGTCAAA  
 ATTAGGAAGGACGTTGCTGTGGAGACCTGGTGGCTCGTGGACATGGGAACCAGACTGGGTACAACATGA  
 CAATTCTCTTGTCTGGATGGAGGCTTAAAAATTGAGAAAGCAGCAAGGTTTATTTTCAGGACAGTGA  
 ACTGATAGAAGAGGGCATAAAAGGCTCCTGGTCTGAGTTTCTACTTCAAAATTAATGGGCTTCTATA  
 TTTCTGAAAGGCTCAAATTGGATTCCAGCCGACTCCTTCCAAGACAAAGTCACTCCGATCGGCTGCAGC  
 TCCTTTTCCAGTCCGTCGTGGATGCGAACATGAACACTCTGCGGTGTGGGGGGTGGCCTCACGAGCA  
 GGATGAGTTCTATGCGCTCTGTGATGAACCTGGGATAATGGTGTGGCAGGACTTTATGTTTGCCAGTGCC  
 CTTTATCCAACCTGAGCCTGGCTTCTAGCCTCCGTGAGGAAAGAAGTCACTACCAGGTCAGGAGACTGA  
 AATCTCACCCCTCCATCATATGGAGTGGTAATAATGAGAATGAAGTGGCTCTCAGCGTGAAGTGGTT  
 CCACGTAATCCCAGGGACATGAAAACGTACATTGACGACTACGTGACCCCTCTATGTGAAGAACATCAGG  
 AAGATTGTCTTATCAGAAGACAAGAGCCGTCCTTTCATTGCATCCAGCCCAACCAACGGGATGAAAACCA  
 TGGAGGAAGGCTGGATCTTACGACCCTTATAGCATCCAGTATGGTGAATTCATTTTTATAACTATGC  
 CGATGACTGCTGGAATTGGAAGATCTTCCAAAAGCTCGATTAGTGTCTGAATATGGCTACCAGTCTGG  
 CCTTCTTTTAGCACACTAGAAAAGGTCTCATCTCAGGAGGACTGGGCTTACAACAGCCGCTTCTCCCTTC  
 ATCGGCAGCATCATGAAGATGGCAACCATCAGATGCTGCACCAGGTCAAGATGCATTTCAAACCTCCCCA  
 GGGGACAGACCCATTGCGCACATTTAAAGACACTATCTACCTTACTCAGGTGATGCAAGCCAGTGCATC  
 AAAACAGAAACCGAGTTCTACCTGCGCAGCCGACGAGATAGTGGACGGAAAAGGCCACACCATGGGGG  
 CACTGACTGGCAGCTGAACGATATCTGGCAGGCTCCTTCTGGGCTCTCTTGGTACGGAGGGAAATG  
 GAAAATGCTGCATTACTTCGCTCGCGTCTTCTCGCTCCACTGTTGCCAGTGGGATTTGAAGATGAAGGT  
 GTTTTTTACGTCTATGGCGTCTCAGATCTTCAAAAGACCACACACGAGCTCACCGTGAAGGCTCCATC  
 ACTGGAGCTCCCGAAGCCTTTGTGCTCCCTCGTGAATTCAAGTATTGTGGTTAAGGCCGGAGAGGCAGT  
 GGTTCGTTCCAGATGCCGGTGTCTGAGCTGCTGAAGAGATGCAGGGGATGCACGAGGGAGACATCGCTG  
 GTCTCTTTTACTTTTCAACTGACAAAGAACTTTCAGCCCAACCAACTACCACTTCTGCTCCTCCCTGA  
 AGGACGCTAAAGGCTGCTCAGGCCAACATCACTGTCAACATCTCTCAGAAGGGCAATGTTTTGTTTT  
 TGATCTGGAACGCTGCGGTCGCTCCCTTTGTTGGTTGGATGTAGGAAGTATCCCGGGAGATTTAGT  
 GATAACGGCTTCTCATGATTCGGAAGAACTCTCGGTACTGTTTTACCTTGGAAAGCCACCAGCAAGA  
 GTGAGCTGCAGCAGGCCCTCAGCGTCACCTCCCTGACGGATACCTAC

**ACGCGT**ACGCGGCCGCTCGAG - GFP Tag - GTTTAA

**Protein Sequence:** >MG211048 representing NM\_027288  
 Red=Cloning site Green=Tags(s)

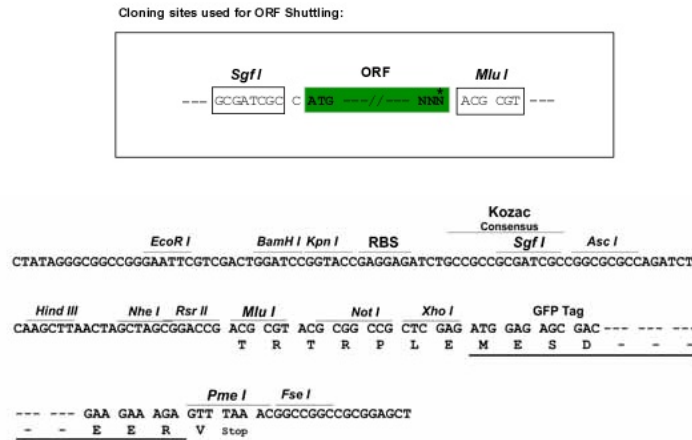
MHLHLLILALFRAGCVVAGPSYSLSGSWRVSNNGSLELPATVPGYVHSALHQHGLIQDPYYRFNDLNY  
 RWISLDNWTYSTEFKIPFNLSEWQKVKLIFDGVDTVAEILFNNVTIGKTDNMFTGYSFDVTNVVKDVNSL  
 KLQFRSAVQYAEQSKAHTSYRVPPECPPEVEQKGECHVNFIRKAQCSFSWDWGSPFSSQGIWKDVRIEAY  
 NIAHLDYLTFLPVYDNASQAWNIEIEASFDVASSKSVSGQVTVAIPLKLTQQTNDIELQQEQRIVKLLVK  
 IRKDVAVETWVPRGHGNTGYNMTILFALDGGKIEKAAKVYFRVTVQLIEEGIKGSPGLSFYFKINGLPI  
 FLKGSNWIPADSFQDKVTSRDLQLLFQSVVDANMNTLRVWGGIYEQDEFYALCDELGIMVWQDFMFASA  
 LYPTPEGFLASVRKEVTYQVRRLLKSHPSIIWSGNNENEVALSVNWFHVNPRDMKTYIDDDYVTLVYKNIR  
 KIVLSEDKSRPFIASSPTNGMKTMEEGWISYDPYSIQYGDIFHFNYYADDCWNWKIFPKARLVSEYGYQSW  
 PSFSTLEKVSQEDWAYNSRFLHRQHHDGNHQLHQQVMMHFKLPQGTDLRTRFKDTIYLTQVMQAQCI  
 KTETEFYLRSRSEIVDGKHTMGALYWQLNDIQAPSWASLEYGKWKMLHYFARRFFAPLLPVGFEDEG  
 VFVYVYVSDLHKDHHTQLTVRLHHWSSPKPLCSLVNSSIVVKAGEAVVLFQMPVSELLKRCRGCTRETCTV  
 VSFYFSTDKELFPTNYHFLSSLKDAKGLLEANITVNISSQKGNVVFVDLETSAVAPFVWLDVGSIPGRFS  
 DNGFLMIRKKLSVLFYWPKPTSKSELQQAFSVTSLTDTY

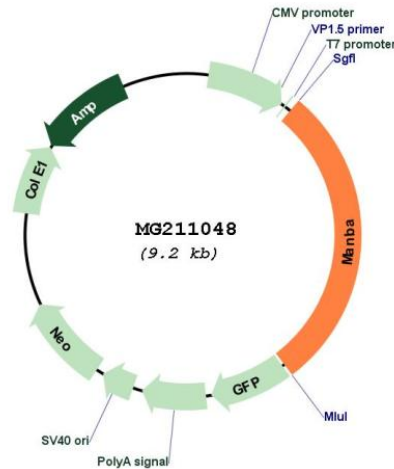
TRTRPLE - GFP Tag - V

**Restriction Sites:**

Sgfl-MluI

**Cloning Scheme:**



**Plasmid Map:**


**ACCN:** NM\_027288

**ORF Size:** 2637 bp

**OTI Disclaimer:** The molecular sequence of this clone aligns with the gene accession number as a point of reference only. However, individual transcript sequences of the same gene can differ through naturally occurring variations (e.g. polymorphisms), each with its own valid existence. This clone is substantially in agreement with the reference, but a complete review of all prevailing variants is recommended prior to use. [More info](#)

**OTI Annotation:** This clone was engineered to express the complete ORF with an expression tag. Expression varies depending on the nature of the gene.

**Components:** The ORF clone is ion-exchange column purified and shipped in a 2D barcoded Matrix tube containing 10ug of transfection-ready, dried plasmid DNA (reconstitute with 100 ul of water).

**Reconstitution Method:**

1. Centrifuge at 5,000xg for 5min.
2. Carefully open the tube and add 100ul of sterile water to dissolve the DNA.
3. Close the tube and incubate for 10 minutes at room temperature.
4. Briefly vortex the tube and then do a quick spin (less than 5000xg) to concentrate the liquid at the bottom.
5. Store the suspended plasmid at -20°C. The DNA is stable for at least one year from date of shipping when stored at -20°C.

**RefSeq:** [NM\\_027288.3](#), [NP\\_081564.3](#)

**RefSeq Size:** 3688 bp

**RefSeq ORF:** 2640 bp

**Locus ID:** 110173

**UniProt ID:** [Q8K2I4](#)

**Cytogenetics:** 3 62.65 cM

**Gene Summary:** Exoglycosidase that cleaves the single beta-linked mannose residue from the non-reducing end of all N-linked glycoprotein oligosaccharides.[UniProtKB/Swiss-Prot Function]