

Product datasheet for **MG211046**

Pkn3 (NM_153805) Mouse Tagged ORF Clone

Product data:

Product Type:	Expression Plasmids
Product Name:	Pkn3 (NM_153805) Mouse Tagged ORF Clone
Tag:	TurboGFP
Symbol:	Pkn3
Synonyms:	AW209115; BC034126
Mammalian Cell Selection:	Neomycin
Vector:	pCMV6-AC-GFP (PS100010)
E. coli Selection:	Ampicillin (100 ug/mL)



[View online »](#)

ORF Nucleotide Sequence:

>MG211046 representing NM_153805
 Red=Cloning site Blue=ORF Green=Tags(s)

TTTTGTAATACGACTCACTATAGGGCGGCCGGGAATTCGTCGACTGGATCCGGTACCGAGGAGATCTGCC
 GCC**CGGATCGCC**

ATGGAACACCCAAAGCCTGGGACTGGCCAGAGAGCCCCAAGGATGAGAAAGAGATGGTCCGCCAGCCA
 TCCAGAAGGAGCTGAAGATCAAGGAGGGCATGGAGAACATGCGGCGCGTGGCCACAGACCCAGCCACCT
 GGGTCATGTGCAGCAACTGCTTAGGGCCTCCAACCGCCGCTGGAGCAGCTGCATGGCGAGCTTCGGGAG
 CTGCATGCCAAAGTTCTGCTGCCAGCCTCAGCCGAGCCAGTGACCTCGGAACCCAGCCGCGGGCGGAGC
 AGTCCAGGGCTCGGCTCTCGGAGCTTTACATAGGCAGCTGCAGGTAGAGCTAAAGGTAAGCAGGGGGC
 TGAGAATATGATTCACACGTGTGCCAGCGGCACCCCCAAGGAGAGGAAGCTCCTGGCGGCTGCCAGCAG
 ATGTTAAAGGACAGTCAACTGAAGGTGGCCCTGCTCCGGATGAAGATAAGCAGCCTGGAGTCCAGTGGCT
 CTCCAGAGCCAGGCCCGACTTGTGTCAGAGGAGCTGCAGCACCAGCTTCGAGTAGAGGCTGCTGTGGC
 TGCAGGTGCCAAGAATGTGGTGAAGCTGCTTGGTGGCCAGAGGATGCAGGACCGAAAGGCACTGGCCGAG
 GCCCAGGCCAGCTCCAGGAATCTCCAGAAGCTGGACCTCCTACGGCTGGCCCTGGAATTGCTGCTGG
 AGAGGTTGCCCTCCACCCACTCTACGTAGCAGGGTGACCCAAGAACTTTGGATGGCAATGCTTGGGAA
 CCCCCAACCTTTGGGGCACTTGTGAAACCTATTGCCCTTGACAGGGCACTGCAGGTTCCGCTCCTGGGC
 TGCAAAGATCTGCTGGTAGCTGTGCCTGGACGGTCTCCATGGCTGTCTTGGCAGGTAGCCCTTCTGAAA
 GCTGGCTCCGAACAAGGTCCCGGCAGCAGCGTGGTGGAGGCGAACTGGCCAGTGAGGTAAGTGGCTGTGT
 GAAGGTTGACAAATCGTGTGTGGCCAGACAGGATGGGGACTGGTGGCTGAGAAAATCCTGGGACCAGAGT
 TTTATCATCTCCTTGGACCGAGCTCGCAGCTGGAGATTGGGGTCACTGGCGGGACTGGCAGAGTTGT
 GTGGTGTGGCGTTTCTGAAGCTTGAGGACTTCTGGACAATGCCGTGACCAGCTTCTCTCAGCTGGT
 GCCTCAGGGGCGGCTCTTTGCCAGGTACCTTCTGCGAGCCTGTATTGAAAGGAGGCCTCGGCTGCAG
 AGGCAGAGATGCATTTTCTAAGCGGAGAGGCCGGGATTTTCATGAGAGCTTCCAGATGAACCTCAGCA
 TGGCAGCCTGGGGCGTCTGGTTCATGAGCTTGTGCCCCCTGCAGCTCACCAAACACAGCCAGTCCCCC
 TAAAGGGCGCCCTTAAACAGCGGTCTGTGGGACCCCCAGTGTGCTTCCCCGAGTAACTTCTGCCCATG
 AAGACGCTCTCAAAGAAGACACGAAGCCTCTCCCAAGCCCCGCGCTCTATCTCAAAGAACCAGCCC
 CAGGGACTCCTTGTACCAAGCGCCCCACATGGACCCTAGACCTGCAGTAGTGCCCGCCCTGGCAGCCTT
 ATCCACAAGGAAACCCCCAGACTTCAAGACTTCCGATGTTGGCTGTGCTGGTGGGCGGGGCACTTTGGG
 AAGGTCCTCCTGGTCCAGTACAAAGGAACAGGGAATACTACGCTATCAAGGCGTTGAAGAAGCAGGAAG
 TGCTAGGCCGGGATGAGATTGACAGCCTATACTGTGAGAAGCGGATCCTGGAGACTGTGGGGCGTACAGG
 GCACCCCTTCTGCTCTCTCCTTGCCTGTCTGCAGACCTCCAGCCATGCCTGCTTTGTTACTGAGTTT
 CTGCCCGGAGGAGACCTCATGGCGCAGATTATGAGGATGTCTTCTGAGCCCCAGGCCTGCTTCTACC
 TGGCCTGTGTGGTTCTGGGGCTGCAGTTCCTACACGAGAAGAGGATCATTTACAGGGATCTGAAATTGGA
 TAATCTGCTACTGGATGCCCAGGGTTTCTCAAGATTGCAGACTTTGGACTATGCAAGGAAGGAATTGGC
 TTTGGTGACCGGACCAGCACGTTCTGTGGCACCCTGGAGTTCCTGGCCCCGAGGTTTTGACTCAGGAGG
 CTTACACGCGTGTGTGGACTGGTGGGGCTGGGTGTGCTGCTCTATGAGATGTTAGTGGGTGAGTGTCC
 ATTCGCGGGGACACAGAAGAGGAGGATTTGAATGCATCGTCAGTCAGTGATGTCATGTCATGTCCTT
 CTGTGAGTCAAGGGCTCGAACTCATTCAAGAGCTCCTCCAGAAGTCCCCAGAGAAGCGTCTAGGGGCAG
 GAGAACGGGACGCCGAGGAGATCAAGGTTCAACCATTTCTCAGGACCACCAACTGGCAGGCTTGTGTC
 CCGCACCGTCCAGCCTCCCTTCTGCTACTCTGTGGCCCTGCAGACCTTCGTTACTTCGAGGGAGAG
 TTCACCAGCCTGCCTCCAACCTGACCCACCAGTCTCCAGAGCTCCCTCACTGCTCGCCAACAGGCTG
 CCTTCGGGACTTTGACTTCGTGTCTGAGCAGTTCCTGGAGTCC

AGCGGACCGACGCGTACGCGGCCGCTCGAG – GFP Tag – GTTTAA

Protein Sequence: >MG211046 representing NM_153805
 Red=Cloning site Green=Tags(s)

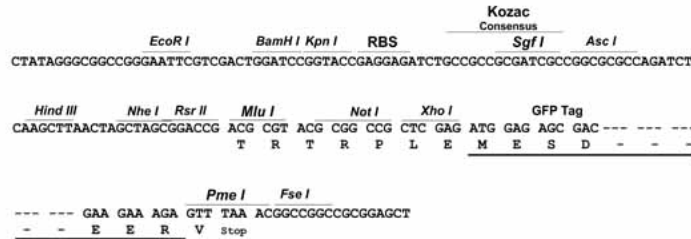
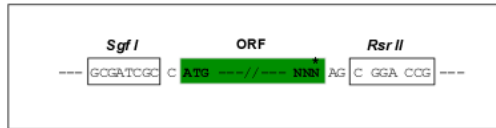
MEHRKPGTGQRAPKDEKEMVRRRAIQKELKIKEGMENMRRVATDRRHLDGHVQQLLRASNRRLLEQLHGELRE
 LHAQVLLPASAEPVTSEPPRAEQSRARLSEALHRQLQVELKVKQGAENMIHTCASGTPKERKLLAAAQQ
 MLKDSQLKVALLRMKISSLESSGSPGPDLLAEELQHRLRVEAAVAAGAKNVVKKLLGGQRMQDRKALAE
 AQAQLQESSQKLDLLRLALELLELLERLPPTHSLRSRVTQELWMAMLGPNPQLGTLVKPIALTGTLQVRLG
 CKDLLVAVPGRSPMAVLGSPSESWLRTRSRQQRGGGELASEVLAVLKVDNRVVGQTGWGLVAEKSWDQS
 FIISLDRARELEIGVHWRDWRQLCGVAFKLEDFLDNACHQLSLSLVPQGRLEFAQVTFCEPVIERRPRLQ
 RQRCIFSKRRGRDFMRASQMNL SMAAWGRLVMSLLPPCSSPNTASPPKGRPSTAVCGTPSAASPSNFLPM
 KTL SKEDTKPPP KPPRLYLQEPAPGTPCTKRPHMDPRPAVVPALAAALSTRKPPRLQDFRCLAVLGRGHFG
 KVLLVQYKGTGKYAIAKALKQEVLRDEIDSLYCEKRIETVGRGTGHPFLLSLLACLQTS SHACFVTEF
 LPGGDLMAQIHEDVFPEPQACFYLACVVLGLQLLHEKRIIYRDLKLDNLLDAQGLKIDFGLCKEGIG
 FGDRTSTFCGTPFLAPEVLTQEAYTRAVDWWGLGVLLYEMLVGECPPFGDTEEEVFECIVSADVPCPHF
 LSVQGLELIQKLLQKSPEKRLGAGERDAEEIKVQPFRTTNWQALLARTVQPPFVPTLCGPADLRYFEGE
 FTSLPPTLTPPVSSSLTARQQAARDFDFVSEQFLES

SGPTRRRLE - GFP Tag - V

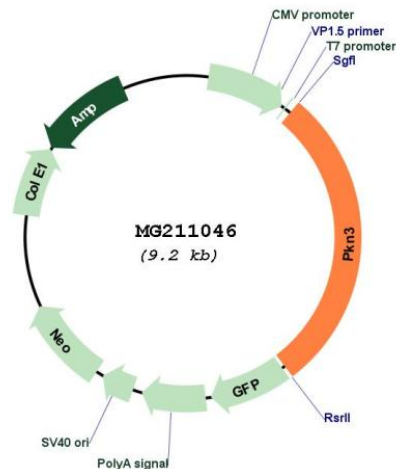
Restriction Sites: SgfI-RsrII

Cloning Scheme:

Cloning sites used for ORF Shuttling:



Plasmid Map:



ACCN: NM_153805

ORF Size: 2634 bp

OTI Disclaimer: The molecular sequence of this clone aligns with the gene accession number as a point of reference only. However, individual transcript sequences of the same gene can differ through naturally occurring variations (e.g. polymorphisms), each with its own valid existence. This clone is substantially in agreement with the reference, but a complete review of all prevailing variants is recommended prior to use. [More info](#)

OTI Annotation: This clone was engineered to express the complete ORF with an expression tag. Expression varies depending on the nature of the gene.

Components: The ORF clone is ion-exchange column purified and shipped in a 2D barcoded Matrix tube containing 10ug of transfection-ready, dried plasmid DNA (reconstitute with 100 ul of water).

Reconstitution Method:

1. Centrifuge at 5,000xg for 5min.
2. Carefully open the tube and add 100ul of sterile water to dissolve the DNA.
3. Close the tube and incubate for 10 minutes at room temperature.
4. Briefly vortex the tube and then do a quick spin (less than 5000xg) to concentrate the liquid at the bottom.
5. Store the suspended plasmid at -20°C. The DNA is stable for at least one year from date of shipping when stored at -20°C.

RefSeq: [NM_153805.2](#)

RefSeq Size: 2948 bp

RefSeq ORF: 2637 bp

Locus ID: 263803

UniProt ID: [Q8K045](#)

Cytogenetics: 2 B

Gene Summary: Contributes to invasiveness in malignant prostate cancer.[UniProtKB/Swiss-Prot Function]