

## Product datasheet for **MG211031**

### **Osbp15 (BC079872) Mouse Tagged ORF Clone**

#### **Product data:**

Product Type:	Expression Plasmids
Product Name:	Osbp15 (BC079872) Mouse Tagged ORF Clone
Tag:	TurboGFP
Symbol:	Osbp15
Synonyms:	ORP5, Osbp2, Obph1
Mammalian Cell Selection:	Neomycin
Vector:	pCMV6-AC-GFP (PS100010)
E. coli Selection:	Ampicillin (100 ug/mL)



[View online »](#)

**ORF Nucleotide Sequence:**

>MG211031 representing BC079872  
 Red=Cloning site Blue=ORF Green=Tags(s)

TTTTGTAATACGACTCACTATAGGGCGGCCGGGAATTCGTCGACTGGATCCGGTACCGAGGAGATCTGCC  
 GCC**CGGATCGCC**

ATGAAGGAGGAGGCTTTCTCCGGCGCCGTTTCTCGTGTGTCCACCAGTTCTACTCCACAGAAGACTG  
 ACCCCCGAAAGTCCCACGGAACCTGCTTCTGGGCTGCGAAAATGAGCTTGGTCCCATCACCCAGGAAG  
 GGACATGGAGTCCAACGGCCCATCAACCCAGAGATGAAGAGCCCAGACCCCAGGCTCCGCCACGAAG  
 GTGCCACTGGCTGAGTACAGGCTATGCAATGGATCTGACAAGGAATGTACCTCTCCAACGACCAGGGTCT  
 CCAAGAAGGATGCTCTCAAGGCACAGAAGGAGAACTATCGGCAGGAGAAGAAGCGGGCCACGAAGCAGCT  
 GTTCAGTGCCTGACTGACCCAGTGTGGTCATCATGGCTGACAGCCTAAAGATCCGAGGGACCCTGAAG  
 AGCTGGACGAAGCTGTGGTGTACTGAAGCCAGGGTGTGCTCATTTACAAGACACCAAGTGGGCC  
 AGTGGGTGGGCACGGTGTGCTGACTGCTGCGAGCTTATTGAGCGCCCTCCAAGAAGGACGGCTTCTG  
 CTTCAAACCTTCCACCCGCTGGACCAGTCTGTGTGGGCTGTGAAGGGCCCCAAAGGCGAGAGTGTGGC  
 TCCATCACTCAGCCCTCCCTAGCAGCTACCTGATCTTACGGGCCGCTTCTGAATCAGACGGCCGCTGCT  
 GGCTAGATGCCCTGGAGCTGGCCCTTCGCTGCTCCAGCCTCCTGCGACTGAGCACGTGCAAGCAGGGTCCG  
 AGATGGGGAGCAGGGTCCCTCGCCTGATGCCTCTCCCTCTTCTCTACGGACTGCCACCTCGGCCACC  
 ATCCCAGATCAAGACCTGTTCCCGCTGAATGGGTCTGCCTTGAGAACGATGCATTTCTCAGACAAGTCAG  
 AACGAGAGAATGCAGAAGACTCGGATGCCGAGACCCAGGATCACAGCCGCAAGACCAACGAGAGTGGGAG  
 CGACCTGCTAGACAGCCCTGGTGGGCCATGGAGGGAACTACCTATGTGGAACAGGTCCAGGAGGAGCTG  
 GGAGAGCTGGACGAGACTTCCAGGTGGAGACAGTGTGAGAGAAAACAAGAGCCTGATGTGGGTGCTGC  
 TGGCAGCTGCGGCCAGGCATGGACCTGTCCCGTGTGGTGTGCGCACCTTCGTGTTGGAGCCTCGGTC  
 CTTCCTCGGCAAGCTCTCTGATTACTACTACCAGGAGACCTGCTCTCCAGGGCAGCAGCAGAGGATGAC  
 CCTACTGCCGCATGAAGCTTGTGCTCCGGTGGTACCTGTCTGGCTTCTATAAGAAGCCCAAGGGCATCA  
 AGAAAACCTATAATCCCATTCTGGGGGAGACTTTTTCGCTGCCGCTGGCTGCACCTCAGACCAACAGTCA  
 CACCTTCTACATAGCAGAACAGGTGTCTCACCATCCTCCTGTGTCTGCCTTCTATGTCAGCAACAGGAAA  
 GATGGCTTCTGCATGAGTGGCAGCATCACAGCAAAGTCTAAGTTCTATGGGAACCTATTGTCGGCGCTTC  
 TGGACGGCAAGGCTAAACTCACCTTCTTAATCGCAAGGAGGAGTATACCCTCACCATGCCCTATGCCCA  
 CTGCCGAGGGATCCTCTACGGCACCATGACCATGGAGCTGGGAGGCAAAGTGAACATCGAGTGTGAGAAG  
 AACAACTCCAAGCTGAAGTGGACTTCAAGCTCAAGCCTTCTTTGGAAGCAGCGCAACATCAACCAGA  
 TTTCCGGGAAGATCATGTGAGGAGAGGAAGTCCCTGGCACGCTCACTGGACACTGGGACAGAGATGTATT  
 TATCAAGGAAGAGAGCAGTGGAGGCACCGAGCTTCTGGACTCCGAGTGAAGAGGTCCGAGGCAGCGG  
 CTGAAGCGGCACACAGTGTGTTGGAAGAGCAGAGTGAAGTGGAGTCTGAGAGGCTGTGGCAGCATGTCA  
 CCAGGGCCATCCGTGAGGGTGAACAGCACAAGCCACACAGGAGAAGTCTGTGCTGGAAGAGGCGCAGCG  
 GCAGCGTGCCCGTGAGCACACAGCAGAGCCTCACTCCATGGAAGCCACAGTTGTTCTTACTGGACCCTCTC  
 ACTCAGGAATGGCGCTACCGATATGAGGACCTCAGCCCTGGGACCCGCTGAAGGACATTGCCCAATATG  
 AGCAAGATGGGATTCTTCATACTCTACAGAGGGAGACTATGTCTGGCCAGACAACCTTTCTGGGGAGTCC  
 TGACTCCAGGCACAAGAGGCCTAGCTCTGATCGCGGCTCCGCAAAGCCAGTGAACAGCCCTCTGGCCAT  
 AGCCAGGTCACTGAGAGCAGCGGCTCCACACCTGAGTCCCTGCCAGACCTCTGATGAGGACTTTGTTC  
 CTGGTGGTGAAGCCATGTCCTCGGTGACAGGCGAGAGGTACACCGGCTAAAGATGCTACAAGAGCCGT  
 GCTGTCCATTGAGGAAGCTCAGCAAGAGCTGCATAGGCACCTTTCGACCATGTTAAGCTCCACAGTGCCT  
 GCTGGGACGGCGCCAGCCCCAGCCTCCTGCAGAAATCCCCGCTCCTGTTCTGCTCTGCATCTTCTGA  
 CGTGTGAGCTATTCATTAATACTATATCCTCAA

**ACGGTACGCGGCCGCTCGAG** – GFP Tag – **GTTTAA**

**Protein Sequence:** >MG211031 representing BC079872  
 Red=Cloning site Green=Tags(s)

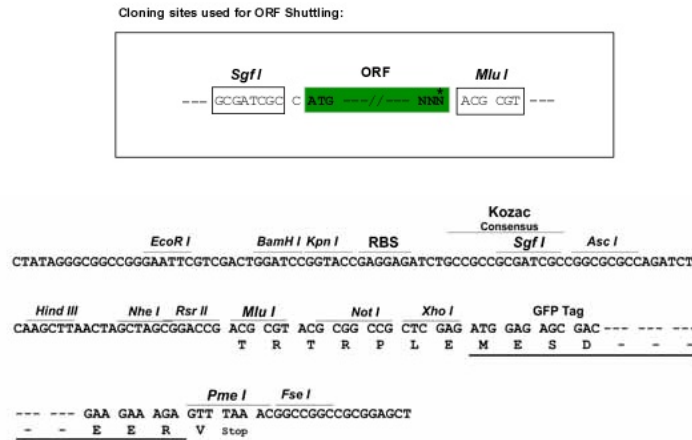
MKEEAFRRRFLCPPASTPQKTDPRKVPRNLLGCENELGPITPGRDMESNGPSQPRDEEPQTPGSATK  
 VPLAEYRLCNGSDKECTSPTRVSKKDALKAQKENYRQEKKRATKQLFSALTDPSVVIMADSLKIRGTLK  
 SWTKLWCVLKPGLVLLIYKTPKVGQWVGTVLLHCCELIERPSKKDGFCKLFHPLDQSVWAVKGPKEGKESVG  
 SITQPLPSSYLIFRAASESDGRCWLDALALRCSLLRLSTCKQGRDGEQGSSPDASPSSLYGLPTSAT  
 IPDQDLFPLNGSALEDAFSDKSERENAEDSDAETQDHSRKTNESGDLLDSPGGPWRGTTYVEQVQEEL  
 GELDETSQVETVSEENKSLMWVLLRQLRPGMDLSRVVLPFVLEPRSFGLKLSDYHHYHGDLLSRAAEDD  
 PYCRMKLVLRWYLSGFYKPKGIKKPYNPILGETFRCRWLHPQTNSTFYIAEQVSHPPVSAFYVSNRK  
 DGFMSGISITAKSKFYGNLSALLDGGKAKLTFLNRKEEYTLTMPYAHCGRGILYGTMTMELGGKVNIECEK  
 NNLQAELDFKLKPFSSANINQISGKIMSGEEVLARLTGHWRDVFIKEESSGGTELFWTPSEEVRQR  
 LKRHTVLLLEEQSELESERLWQHVTIRAIREGDQHKATQEKSVLEEAQRQAREHQQLTPWKQLFLDPL  
 TQEWRYRYEDLSPWDPLKIDIAQYEQDGLHTLQRETMSGQTTFLGSPDSRHKRPSDRRLRKASDQPSGH  
 SQVTSSGSTPESCPDLSDDEFVPGGESPCPRCRREVHRLKMLQEAVLSIQEAQQLHRHLSTMLSSTVR  
 AGQAPAPSLQLNPRSWFLLCIFLTCQLFINYILK

TRTRPLE - GFP Tag - V

**Restriction Sites:**

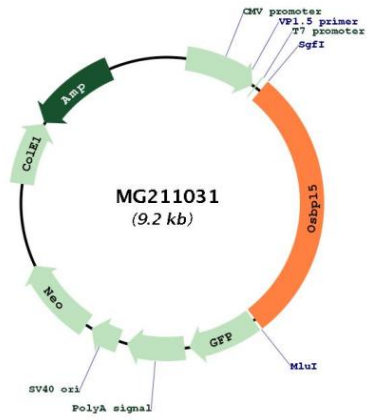
SgfI-MluI

**Cloning Scheme:**



<b>ACCN:</b>	BC079872
<b>ORF Size:</b>	2624 bp
<b>OTI Disclaimer:</b>	The molecular sequence of this clone aligns with the gene accession number as a point of reference only. However, individual transcript sequences of the same gene can differ through naturally occurring variations (e.g. polymorphisms), each with its own valid existence. This clone is substantially in agreement with the reference, but a complete review of all prevailing variants is recommended prior to use. <a href="#">More info</a>
<b>OTI Annotation:</b>	This clone was engineered to express the complete ORF with an expression tag. Expression varies depending on the nature of the gene.
<b>Components:</b>	The ORF clone is ion-exchange column purified and shipped in a 2D barcoded Matrix tube containing 10ug of transfection-ready, dried plasmid DNA (reconstitute with 100 ul of water).
<b>Reconstitution Method:</b>	<ol style="list-style-type: none"><li>1. Centrifuge at 5,000xg for 5min.</li><li>2. Carefully open the tube and add 100ul of sterile water to dissolve the DNA.</li><li>3. Close the tube and incubate for 10 minutes at room temperature.</li><li>4. Briefly vortex the tube and then do a quick spin (less than 5000xg) to concentrate the liquid at the bottom.</li><li>5. Store the suspended plasmid at -20°C. The DNA is stable for at least one year from date of shipping when stored at -20°C.</li></ol>
<b>RefSeq:</b>	<a href="#">BC079872</a> , <a href="#">AAH79872</a>
<b>RefSeq Size:</b>	3834 bp
<b>RefSeq ORF:</b>	2624 bp
<b>Locus ID:</b>	79196
<b>Cytogenetics:</b>	7 88.29 cM
<b>Gene Summary:</b>	Lipid transporter involved in lipid countertransport between the endoplasmic reticulum and the plasma membrane: specifically exchanges phosphatidylserine with phosphatidylinositol 4-phosphate (PI4P), delivering phosphatidylserine to the plasma membrane in exchange for PI4P, which is degraded by the SAC1/SACM1L phosphatase in the endoplasmic reticulum. Binds phosphatidylserine and PI4P in a mutually exclusive manner. May cooperate with NPC1 to mediate the exit of cholesterol from endosomes/lysosomes. Binds 25-hydroxycholesterol and cholesterol.[UniProtKB/Swiss-Prot Function]

Product images:



Circular map for MG211031