

Product datasheet for **MG211021**

Abr (BC058708) Mouse Tagged ORF Clone

Product data:

Product Type:	Expression Plasmids
Product Name:	Abr (BC058708) Mouse Tagged ORF Clone
Tag:	TurboGFP
Symbol:	Abr
Mammalian Cell Selection:	Neomycin
Vector:	pCMV6-AC-GFP (PS100010)
E. coli Selection:	Ampicillin (100 ug/mL)



[View online »](#)

ORF Nucleotide Sequence:

>MG211021 representing BC058708
 Red=Cloning site Blue=ORF Green=Tags(s)

TTTTGTAATACGACTCACTATAGGGCGGCCGGGAATTCGTCGACTGGATCCGGTACCGAGGAGATCTGCC
 GCC**GCGATCGCC**

ATGGCAGCCGGGGCCGCCGCCGGCGCCACTGCGCTACCAGTCCCTGGCAGCCCTGGTGAAGACTCTC
 AGTGGCCTTTCTTGTTCCTTGTCTCAGACTTCAGCTACGGTGGGAGGACTACGACGCAGAGGGGCATGA
 GGAGCAGAAGGGGCCCCCGAGGGCTCGGAGACCATGCCGTACATCGACGAGTACCCACCATGTCGCCC
 CAGCTCAGCGCCCGCAGCCAAGGTGGTGGGACAGCGTCTCGCCACCCACCTGAGGGATTGGCACCTG
 GGGTGGAGGCAGGAAGGGTCTGGAGATGAGGAAGCTAGTCTCTCTGGGTTTCTGGCCAGTGAAGAGAT
 CTACATTAACCAGCTGGAAGCTCTGTTACTGCCATGAAACCCCTGAAGGCCACAGCCACCACCTCCAG
 CCTGTGCTCACCATCCAACAGATTGAGACCATCTTCTACAAGATCCAGGACATCTACGAGATCCACAAGG
 AGTTCTACGACAACCTCTGCCCAAGGTGCAGCAGTGGGACAGCCAGGTACCATGGGCCATCTTTTCCA
 GAAACTGGCCAGCCAGCTTGGCGTGTACAAAGCATTTGTGGATAACTATAAAGTCGCTCTGGAGACAGCC
 GAGAAGTGCAGCCAGTCCAAACAACAGTTCAGAAAGATCTCTGAGGAACCTCAAAGTGAAGGGCCCAAGG
 ACTCTAAGGACAGCCATACATCAGTCCACATGGAAGCTCTGCTGTACAAGCCAATTGACCCGATCCCCG
 GAGCACCTGGTCTTACGATCTGTTGAAGCACACCCCGTGGACCACCCGGACTACCCGCTGCTTCAG
 GATGCTCTCCGCATCTCCAGAATTTCTGTCTAGCATTAAAGGAGCATTGATCCTCGCCGGACTGCAG
 TCACAACCCCAAGGGAGAGACTCGGCAGCTGGTGAAGGACGGCTTCTGGTGAAGTGTCTGAGAGCTC
 CCGAAGCTGCGGCATGTCTTCTTTCACAGATGTTCTGCTGTGTGCCAAGCTAAAGAAGACCTCAGCA
 GGAAAGCATCAGCAGTATGACTGTAAGTGGTACATCCCTCTGGCTGACTTAGTGTCCCATCCCTGAGG
 AGTGCAGAGGCCAGTCCCGAGGTGCACCCCTTCCAGACCAGAGCTCGAGGACATGAAAACGAAGATCTC
 TGCCCTCAAGAGTGAGATCCAGAAGGAGAAAGCCAACAAAGGACAGAGCCGAGCCATTGAGCGCCTCAAA
 AAGAAGATGTTTGAAGTGAAGTCTTACTGCTGCTCAATTCCCCAACGATCCCTTTCCGGATACACAATC
 GGAATGGAAGAGTTACCTGTTTCTTGTCTTCTGACTATGAGAGGTCGGAGTGGAGAGAAGCGATTCA
 GAAGCTACAGAAGAAGGATCTCCAGGCCTTTGTCTGAGCTCTGTGGAGCTCCAGGTGCTCACGGGATCC
 TGTTTCAAGCTTAGGACTGTGCACAACATTCTGTCCAGCAATAAAGATGATGATGAGTCTCCAGGAC
 TGTACGGTTCCTTCATGTCATCGTCCACTCTGCCAAGGGCTTTAAACAGTCAGCCAATCTTTACTGTAC
 TCTGGAGGTGGATTCTTTGGCTATTTTGTGAGCAAGCCAAGACCAGGGTGTTCGGGACACGACAGAG
 CCCAAGTGGGATGAGGAGTTTGAAGTGGAGCTGGAGGGTTCACAGTCCCTGAGGATCCTGTGTTATGAGA
 AGTGTCTACGACAAGACCAAGGTCAACAAAGACAACAATGAGATTGTGGACAAGATCATGGCAAGGGGCA
 GATCCAGCTGGATCCACAGACAGTAGAAAGCAAGAAGTGGCATACGGACGTGATTGAAATGAATGGGATC
 AAAGTGAATTTCTCCATGAAATTTACCAGCCGTGACATGAGCCTGAAGAGGACCCCATCCAAAAGCAGA
 CAGGCGTCTTTGGAGTGAAGATCAGCGTGGTGACCAAGCGGGAGCGCTCAAGGTGCCCTACATCGTCCG
 GCAATGCATAGAAGAGGTGGAGAAGAGGGGCATTGAGGAGGTTGGCATCTACAGGATATCAGGGGTGGCC
 ACGGACATCCAGGCCCTGAAGGCTGTCTTTGATGCCAATAACAAGGACATCCTACTGATGCTGAGCGACA
 TGGACATCAACGCCATCGCTGGGACCCTAAGCTATACTTTGGGAGCTGCCTGAGCCCCCTTACAGA
 TAGACTTTATCCAGCCTTCATGGAGGGCATTGCCCTGTGAGACCCTGTGCCAAGGAGAAGTGCATGATG
 CACCTACTCCGCTCCCTGCCTGACCCCAACCTCATCACCTTCTTTTCTGCTGGAACACTTGAAGAGGG
 TTGCTGAGAAGGAGCCATCAACAAGATGTCACCTTCAACAACCTTGCCACGGTGTGGCCCCACGTTACT
 GAGACCATCAGAAGTGGAGAGCAAGCACATCTCACATCAGCTGCAGACATCTGGTCCCATGATGTCATG
 GCCCAGGTCCAGGTCTCTCTACTACCTGCAGCATCCCCCATTTCTTTCGAGAACTGAAGCGGAACA
 CACTGTACTTCTCCACAGACGTG

ACGCGTACGCGGCCGCTCGAG - GFP Tag - GTTTAA

Protein Sequence: >MG211021 representing BC058708
 Red=Cloning site Green=Tags(s)

```

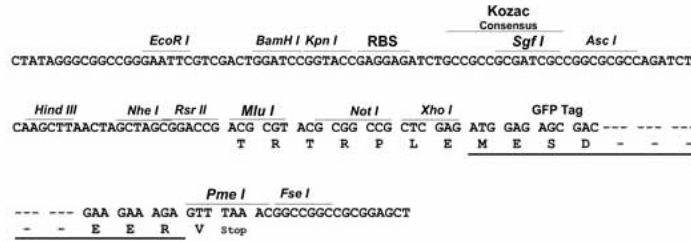
MAAGRRRRPLRYQSLAALVEDSQWPFLFLVSDFS YGAEDYDAEGHEEQKGPPEGSETMPYIDESPTMSP
QLSARSQGGGDSVSPTPEGLAPGVEAGKGLEMRKLVLSGFLASEEIIYNQLEALLLPMKPLKATATTSQ
PVLTIQQIETIFYKIQDIYIEIHKEFYDNLCPKVQQWDSQVTMGHLFQKLASQLGVYKAFVDNYKVALETA
EKCSQSNNQFQKISEELKVKGPKDSKDSHTSVTMEALLYKPIDRVTRSTLVLDLLKHTPVDHPDYPLLQ
DALRISQNFLLSSINEDIDPRRTAVTTPKGETRQLVKDGFVEMSESSRKL RHFVLF TDVLLCAK LKKTSA
GKHQQYDCKWYIPLADLVFSPPEESEASPVHPFPDHELEDMTKISALKSEIQKEKANKGQSRAIERLK
KKMFENEFLLLLNSPTIPFRIHNRNGKSYL FLLSSDYERSEWREAIQKLQKDLQAFVLSSELQVLTGS
CFKLRTVHNIPTVSNKDDDESPGLYGFLHVI VHSAGFKQSANLYCTLEVDSFGYFVSKAKTRVFRDTE
PKWDEEFEIELEGSQSLRILCYEKCYDKTKVNKDNNEIVDKIMGGQIQLDPQTVESKNWHTDVIEMNGI
KVEFSMKFTSRDMSLKRTPSKKQTGVFVKISVVTKRERSKVPIYVRQCIEEVEKRGIEEVGIYRISGVA
TDIQALKAVFDANNKDILLMLSDMDINAIAGTLKLYFRELPELLTDRLYPAFMEGIALSDPAAKENCMM
HLLRSLPDPNLITFLFLLLEHLKRVAEKEPINKMSLHNLATVFGPTLLRPSEVESKAHLTSAADIWSHDVM
AQVQVLLYYLQHPPISFAELKRNTLYFSTDV
  
```

TRTRPLE - GFP Tag - V

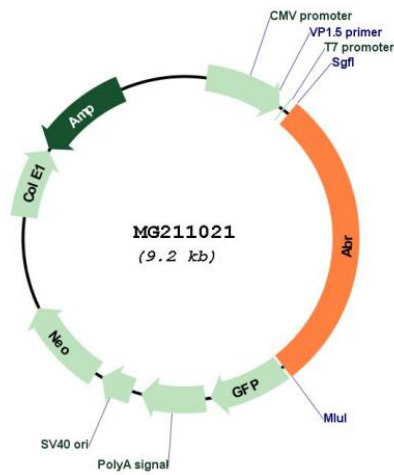
Restriction Sites: Sgfl-MluI

Cloning Scheme:

Cloning sites used for ORF Shutting:



Plasmid Map:



ACCN:	BC058708
ORF Size:	2615 bp
OTI Disclaimer:	The molecular sequence of this clone aligns with the gene accession number as a point of reference only. However, individual transcript sequences of the same gene can differ through naturally occurring variations (e.g. polymorphisms), each with its own valid existence. This clone is substantially in agreement with the reference, but a complete review of all prevailing variants is recommended prior to use. More info
OTI Annotation:	This clone was engineered to express the complete ORF with an expression tag. Expression varies depending on the nature of the gene.
Components:	The ORF clone is ion-exchange column purified and shipped in a 2D barcoded Matrix tube containing 10ug of transfection-ready, dried plasmid DNA (reconstitute with 100 ul of water).
Reconstitution Method:	<ol style="list-style-type: none">1. Centrifuge at 5,000xg for 5min.2. Carefully open the tube and add 100ul of sterile water to dissolve the DNA.3. Close the tube and incubate for 10 minutes at room temperature.4. Briefly vortex the tube and then do a quick spin (less than 5000xg) to concentrate the liquid at the bottom.5. Store the suspended plasmid at -20°C. The DNA is stable for at least one year from date of shipping when stored at -20°C.
RefSeq:	BC058708 , AAH58708
RefSeq Size:	5263 bp
RefSeq ORF:	2615 bp
Locus ID:	109934
Cytogenetics:	11 45.92 cM
Gene Summary:	Protein with a unique structure having two opposing regulatory activities toward small GTP-binding proteins. The C-terminus is a GTPase-activating protein domain which stimulates GTP hydrolysis by RAC1, RAC2 and CDC42. Accelerates the intrinsic rate of GTP hydrolysis of RAC1 or CDC42, leading to down-regulation of the active GTP-bound form. The central Dbl homology (DH) domain functions as guanine nucleotide exchange factor (GEF) that modulates the GTPases CDC42, RHOA and RAC1. Promotes the conversion of CDC42, RHOA and RAC1 from the GDP-bound to the GTP-bound form (By similarity). Functions as an important negative regulator of neuronal RAC1 activity (PubMed:20962234). Regulates macrophage functions such as CSF-1 directed motility and phagocytosis through the modulation of RAC1 activity (PubMed:17116687).[UniProtKB/Swiss-Prot Function]