

Product datasheet for **MG211011**

Eif4g2 (NM_001040131) Mouse Tagged ORF Clone

Product data:

Product Type:	Expression Plasmids
Product Name:	Eif4g2 (NM_001040131) Mouse Tagged ORF Clone
Tag:	TurboGFP
Symbol:	Eif4g2
Synonyms:	DAP; DAP-5; E130105L11Rik; Na; Nat; Nat1; Natm1; p97
Mammalian Cell Selection:	Neomycin
Vector:	pCMV6-AC-GFP (PS100010)
E. coli Selection:	Ampicillin (100 ug/mL)



[View online »](#)

ORF Nucleotide Sequence:

>MG211011 representing NM_001040131
 Red=Cloning site Blue=ORF Green=Tags(s)

TTTTGTAATACGACTCACTATAGGGCGGCCGGGAATTCGTCGACTGGATCCGGTACCGAGGAGATCTGCC
 GCC**CGGATCGCC**

GTGGAGAGTGCATTGCAGAAGGGGTGCTTCTCGTTTCAGTGCTTCTTCGGGCGGAGGAGGAAGTAGGG
 GTGCACCTCAGCACTATCCCAAGACTGCTGGCAACAGCGAGTTCTTGGGAAAACCCAGGGCAAAACGC
 TCAGAAATGGATTCTGCACGAAGCACTAGACGAGATGACAACCTCCGCAGCAAACAACCTCCGCAAATGAA
 AAAGAACGACATGATGCAATCTTCAGGAAAGTAAGAGGCATACTAAATAAGCTTACTCTGAAAAGTTTG
 ACAAGCTATGCCTTGAGCTCCTCAATGTGGGTGTAGAGTCTAACTCATCCTTAAAGGGGTCACTACTGCT
 GATTGTGGACAAAGCCTTAGAAGAGCCAAAGTATAGCTCGCTGTATGCTCAGCTATGCTGCGATTGGCA
 GAAGATGCACCAAACCTTGTAGGGCCAGCAGAGGGTCAACCAGGACAGAAGCAAAGCACAACATTCA
 GACGCCTCTTGATTTCAAATTCGAAGATGAATTTGAAAACCGAACAGAAATGTTGATGTCTATGATAA
 GCGTGAAAATCCCCTCCTCCTGAGGAGGAGAACAGAGAGCCATTGCTAAGATCAAGATGTTGGGGAAC
 ATCAAATTCATTGGAGAACTTGGCAAGCTTGATCTTATTCATGAATCTATCCTTCATAAGTGCATCAAAA
 CACTTTTGGAAAAGAAGAAGAGAGTCCAACCTCAAAGATATGGGAGAGGATTTGGAGTGCCTCTGTAGAT
 AATGAGGACAGTGGGACCTCGATTAGACCATGAACGAGCCAAGTCTTAATGGATCAGTACTTTGCCAGA
 ATGTGTTCTTAATGTTAAGTAAGGAATTGCCAGCCAGGATTCGTTTCTACTGCAGGATACTGTAGAGT
 TGCGAGAGCACCATTGGGTTCTCGCAAGGCTTTTCTTGACAATGGACCAAGACGATCAATCAAATCCG
 TCAAGATGCAGTAAAAGATCTAGGAGTGTATTCCTGCTCCTATGGCTCAAGGGAGGAATGACTTCTTC
 CTGGAGGGACCGTTTCATGCCCAAGGATGAAAATGGATAGGGACCCACTTGGGGGACTTGTCTGATATGT
 TTGGACAAATGCCAGGTAGTGAATTGGTACTGGTCCAGGAGTTATCCAGGATAGATTTTACCACCAAT
 GGGACGTCATCGTTCAAATCAGCTCTTCAATGGCCATGGGGGACATCATGCCTCCACGCAATCGCAG
 TTTGGAGAGATGGGGGCAAGTTTATGAAAAGCCAGATTAGTTTGGAGCCTGCTCAGTCTTTCTAATGA
 ATAAAAATCAGGTGCCAAAGCTTCAGCCCCAGATAACTATGATTCCTCCAGTGCACAGCCACCACGCAC
 TCAAACACCGCTCTGGGACAGACACCTCAACTGGTCTCAAACCTAATCCACCCTTATCCAGGAAAAG
 CCTGCCAAGACTAGCAAAAAGCCACCACCATCAAAGGAAGAACTACTTAACTGACCGAAGCCGTTGTGA
 CTGACTATCTGAACAGTGGAAATGCCAACGACGCTGTCAAGTGTGAGAGAAAATGAGAGCTCCAAAACA
 CTTTCTCCTGAGATGCTAAGCAAAGTATCATCCTGTCACTTGTAGAGAGTGAAGATAAAGAAAAA
 GCAAGCTCTTAAATCAGTTTACTCAAACAGGAAGGGATAGCCACAAGTGACAACCTCATGCAGGCTTTCC
 TGAATGTATTGGAGCAGTGCCCCAACTGGAGGTTGACATCCCCTTGGTGAATCTTACTTGGCACAGTT
 TGCAGCTCGTGCTATAATTTAGAGTGGTGGAGCATTTCGAACTAGCTCAACCCTGGAGAGTGGCACC
 CACTTCCCTCTCTTCTTACTTTGTCTTCAACAATTAGTAAATTCGAAGCCGAGAGTGGTTAACCGAAC
 TTTTTCAAACAAGCAAGGTCAATATGCAGAAAAATGCTGCCAGAAAATGATCAGAAATAAGGATCGAATGTT
 GGAGATTTTGAAGGAAAGGGACTGAGTTTCTTATCCCACTCCTTAAATGGAGAAGGAACTATTGAAG
 CAAATTAAGCTGGATCCATCCCCTCAAACCTATATAAATGGATTAAGATAACATCTCTCCAAACTTC
 ATGTAGATAAAGGATTCGTGAACATCTAATGACCAGCTTCTTACAGTACATTTCTAGTGAAGTAAGCCC
 ACCCAGCGATGAAACAGATTTCTCCTCTGCTCCTTCCAAAGAGCAGTTAGAGCAGGAAAAACAGCTGCTG
 CTCTCTTTTAAGCCAGTGATGCAGAAATTTCTTCATGATCATGTGGATCTACAGGTCAGTGCCCTGTATG
 CTTTGCAGGTGCACTGTTACAACAGCAGCTTCCAAAAGGCATGTTACTTCGATTTTTTGTCACTTCTA
 TGACATGGAAATATTGAAGAGGAAGCTTTCTTAGCTTGAAGGAAGACATAACTCAAGAGTTTCCAGGA
 AAAGGCAAGGCTTTGTTCCAGGTGAATCAGTGGCTAACCTGGCTAGAACTGCTGAAGAAGAAGAATCAG
 AGGAAGAAGCTGAC

ACGCGTACGCGGCCGCTCGAG - GFP Tag - GTTTAA

Protein Sequence: >MG211011 representing NM_001040131
 Red=Cloning site Green=Tags(s)

VESIAIEGGASRFSASSGGGSRGAPQHYPKTAGNSEFLGKTPGQNAQKWIPARSTRRDDNSAANNSANE
 KERHDAIFRKVRGILNKLTPKFDKLCLELLNVGVESKILKGVILLIVDKALEEPKYSSLYAQLCLRLA
 EDAPNFDGPAEAGQPQKQSTTFRRLIISKLQDEFENRTRNVVYDKRENPLPEEEEEQRAIAKIKMLGN
 IKFIGELGKLDLIESILHKCIKTLLEKKKRVQLKDMGEDLECLCQIMRTVGPRLDHERAKSLMDQYFAR
 MCSLMLSKELPARIRFLLQDTVELREHHWVPRKAFLDNGPKTINQIRQDAVKDLGVFIPAPMAQGRNDF
 LEGPFMPRPMKMDRDLGGLADMFGQMPGSGIGTGPGVIQDRFSPTMGRHRSNQLFNGHGGHIMPPTQSQ
 FGENGGKFMKSQISLRPAQSFLMNKNQVPKLQPQITMIPPSAQPRTQTPLGQTPQLGLKTNPPLIQEK
 PAKTSKKPPPSKEELLKTEAVVTDYLSNGNANDAVSGVREMRAPKHFLPEMLSKVIIISLDRSDEDKEK
 ASSLISLLKQEGIATSDNFMQAFNLVLEQCPKLEVDIPLVKSILAQFAARAIISELVSISELAQPLESQT
 HFPLFLCLQQLAKLQDREWLTELQQSKVNMQKMLPEIDQNKDRMLEILEGKLSFLFLLKLEKELLK
 QIKLDPSPTIYKWKIDNISPKLHVDKGFVNILMTSFLQYISSEVSPSDETDSSAPSKEQLEQEKQLL
 LSFKPMQKFLHDHVDLQVSALYALQVHCYNSSFPGMLLRFFVHFYDMEIEEEAFLAWKEDITQEFPG
 KGKALFQVNQWLTWLETAEIEEEEEAD

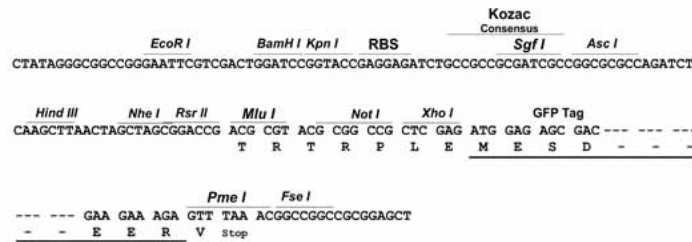
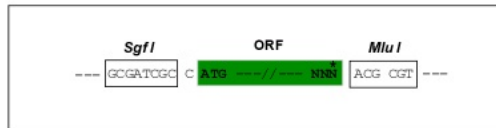
TRTRPLE - GFP Tag - V

Restriction Sites:

Sgfl-MluI

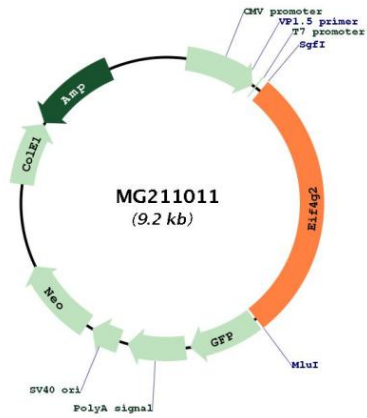
Cloning Scheme:

Cloning sites used for ORF Shuttling:



ACCN:	NM_001040131
ORF Size:	2604 bp
OTI Disclaimer:	The molecular sequence of this clone aligns with the gene accession number as a point of reference only. However, individual transcript sequences of the same gene can differ through naturally occurring variations (e.g. polymorphisms), each with its own valid existence. This clone is substantially in agreement with the reference, but a complete review of all prevailing variants is recommended prior to use. More info
OTI Annotation:	This clone was engineered to express the complete ORF with an expression tag. Expression varies depending on the nature of the gene.
Components:	The ORF clone is ion-exchange column purified and shipped in a 2D barcoded Matrix tube containing 10ug of transfection-ready, dried plasmid DNA (reconstitute with 100 ul of water).
Reconstitution Method:	<ol style="list-style-type: none">1. Centrifuge at 5,000xg for 5min.2. Carefully open the tube and add 100ul of sterile water to dissolve the DNA.3. Close the tube and incubate for 10 minutes at room temperature.4. Briefly vortex the tube and then do a quick spin (less than 5000xg) to concentrate the liquid at the bottom.5. Store the suspended plasmid at -20°C. The DNA is stable for at least one year from date of shipping when stored at -20°C.
RefSeq:	NM_001040131.2 , NP_001035221.1
RefSeq Size:	7646 bp
RefSeq ORF:	2607 bp
Locus ID:	13690
UniProt ID:	Q62448
Cytogenetics:	7 58.0 cM
Gene Summary:	Translation initiation is mediated by specific recognition of the cap structure by eukaryotic translation initiation factor 4F (eIF4F), which is a cap binding protein complex that consists of three subunits: eIF4A, eIF4E and eIF4G. The protein encoded by this gene shares similarity with the C-terminal region of eIF4G, that contains the binding sites for eIF4A and eIF3; eIF4G in addition, contains a binding site for eIF4E at the N-terminus. Unlike eIF4G which supports cap-dependent and independent translation, this gene product functions as a general repressor of translation by forming translationally inactive complexes. Transgene expression of the apolipoprotein B mRNA-editing enzyme (APOBEC-1) causes extensive editing of this mRNA, which could contribute to the potent oncogenesis induced by overexpression of APOBEC-1. In vitro and in vivo studies in human indicate that translation of this mRNA initiates exclusively at a non-AUG (GUG) codon. This also appears to be true for mouse. Two alternatively spliced transcript variants that encode different isoforms have been found for this gene. [provided by RefSeq, Jul 2008]

Product images:



Circular map for MG211011