

Product datasheet for **MG210992**

2310066E14Rik (BC030451) Mouse Tagged ORF Clone

Product data:

Product Type:	Expression Plasmids
Product Name:	2310066E14Rik (BC030451) Mouse Tagged ORF Clone
Tag:	TurboGFP
Symbol:	2310066E14Rik
Synonyms:	2310066E14Rik; AI837433
Mammalian Cell Selection:	Neomycin
Vector:	pCMV6-AC-GFP (PS100010)
E. coli Selection:	Ampicillin (100 ug/mL)



[View online »](#)

ORF Nucleotide
Sequence:

>MG210992 representing BC030451
Red=Cloning site Blue=ORF Green=Tags(s)

TTTTGTAATACGACTCACTATAGGGCGGCCGGGAATTCGTCGACTGGATCCGGTACCGAGGAGATCTGCC
GCCGCGATCGCC

ATGTTACGGCGACAGGAGGAGCTCGAGAATGGGACGGCCTGGTCCCTGTCTCTGAATCGTCAGATGATT
CATCAAGCCCGCAGCTCTCTGGCACAGCTCGACTCAACTCCCAAGCCTCTGGTGAACAGCCTGAGCC
CCTGCCTGTCCAAGTTGCCTTCCGAAGGCCAGAGAGCCTCACGTCTGGTCCATGGATGAAGAGCCAGCC
ATGACCCCATCCCTGGTCAATGGGCATGCCCTTACAGCCGACTCTCAGCCACATCAGCGAGGCCAGCG
TGGATGCTGCCTTACTGAGGCCGTGGAAGCTGTGGACTCACAAAGCCCAATCCAGGGCCTAGCCCGCT
TGTCTATCCAGATTCCACCCACGTGGAGCGTGTCAAGTGTCTGCCTGTCTCAACAATGGCCATTCT
GCCACAAGTCCCGCCCTCAGTACAACCTGGCCCCGCCCCACATTTATAGACCCTGCCCAACGACACAGC
TAGACTTGGTTCACAAAACCACAGACTCCGCCCTTCTGAGTTGCCCAGCATCACACATACTACGACAAG
CTCTGCATATAGTGTGTAAAGCCTTGTCAACAGTGTCCAAGCCTAACTCCACCACTATAGTTCTGCC
CACACAACCACGCCCTCTCCCTCACCTCCACAGGCTCTGTTCCAATGCAACAGACTCAACCCAGGCTA
CCCAAGCCCTACTCACAGTACCCCAAGCCCTACCCATACTACTATACGCCCTCACCCACACCACTGTAAG
CCCTACACATAGCTCCCCGAGCCCCATACACACTACCCCGAGCCCCACCCATACCACTGTAAGTCCCACC
TGCACTACTCAAAGTCCGGCCACAGTACCCTAGTCCCACTCAAGAAGCCAAGATGTCAACTCATACCA
CCGGTGTGTGGGCCCGTCCAGACCACTACAAGTCCCATTTCCACAACCTGAAAGCCCTCCCTTCTAC
AGACGTGGCTATAATCTCCAGCTCCTCTGCAGAATCCACCGGCCAGGCACTGAACCTCTGCCCTGTAGT
CACCCAGCTCCCTCCCTACACTAAAGCAGACCCACAGCTTCTGCACCTCTTACCAGAGTCTTGCTT
CCTCTGGTTCAAAACCCCTCACAAGCCCTGCCCGGATTCCCAAGAACAAATCCCTAAGAGCCCAAGTTC
CTCTCCCTCATCTAGTGGCCCTGAACCCCAACATTCAGAACATAACCTGGCCGCAGTTGCTCAAGCCCA
GTCCCTGAGGCAACGGGAGGAGCTGGGGACAGAAGGCTTGAAGAAGCTCTTGGGACCCTAATGTCTGCC
TTGATGACTATCGTGGTCAAGTCCCTGAGCTGCAGGGCCTGGAGCAGGAGGTGACTCGGTGGAGAGTCT
GCTCATGCAGAGACAAGGCTGACTCGAAGCCGGGCTTCCAGTCTTAGCATCACTGTGGAGCATGCCCTG
GAGAGCTTCAAGTCTCAATGATGATGAAGATGAAGACAACGATGGTCCCGGGGACAGGCACACAAGCA
GCCAGAGGTTGTGGCAGAGGACAGACTAGACTCATCAAATGGCCAGTCTCTAAGCACAGGGTGTTCAGC
CCTGGATGCTACCTTGGTCCAGCACCTGTACCCTGCAGCCGCTCCTGCTGAAACTGGGCACATTTGGA
CCCTGCGCTGCCAGGAGCCTGGGCCCTGGAACGGCTGCTGCGGAAGCGGTGTATTCCAGGAAGTGT
GTGAACGCAGCAAGCTATGGGGAACTCTGCCACATCTGCCAGGAAGTGGTACAGTTCTCCGCCTCTCG
GCCCGGCTTCTGACCTTTTGGGACCAGTGTACAGAGGGACTCAGCCCTTCATCTGCTCTGTGGAGCGG
GTGCTCCTCACCTTCTGCAGCCAGTACGGTGCCTGCTTTCCCTGCGCCAGCCAGGCTTAGCCGAGGCTG
TGTGTGTGAAGTCTTGGGAAGATGCCCTGGGACAGAAGCTGCCAGGAGGCCCAACCAGGCCCGGGGA
GCAGTTCACCATCTTCCAATTCTGGAGTTATGTAGAAGCCTTGGACAGCCCTCCATGGATGCCTGTGTG
ACAGAGACTGCAGAGGAGGTGTTACTAGTACAGAACCTGAACTCTGATGACCAGGCCGTTGTGCTGAAAG
CCCTAAGGTTAGCACCGGAGGGCGCTGCGAAAGGATGGGCTTCGGGCTTCTAGCTCCCTGCTGGTCCA
CGGCAACAACAAGTCAATGGCTGCTGTCAAGCCTGAGCTTCCGAGCCTGTCACTTGGTCTGCTTCCGG
GAAAGGGCTCTTGTGCTTCTGGACAGCTGGAAGATGGGGACGTGCAGACTCGAGTGGCCGGATGCC
TGCTTTGGGCTGTATCAAGGCTCCTGAGGGCATTGAGCCCTGGTGTACTTGTGCCAAACAGACACAGA
AGCTGTGAGGGAAGCCCGCCGAGAGCCTGCAGCAGTGCAGGGGAGGAAGGACAGTCTGCTCATCGACAG
CTAGAGGAGTCCCTGGATGCTCTGCCCTGCATCTTTGGGCCAGCAGCATGGCCAGCACAGCATT

ACGCGTACGCGGCCGCTCGAG - GFP Tag - GTTTAA

Protein Sequence: >MG210992 representing BC030451
Red=Cloning site Green=Tags(s)

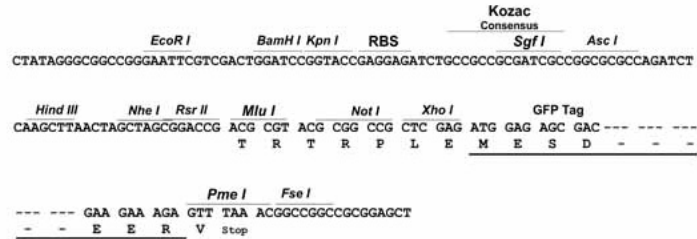
MLRRQEELNGTAWLSSESSDDSSSPQLSGTARHSTPKPLVQQPEPLPVQVAFRRPELSTSGSMDEEPA
MTPSLVNGHAPYSRTLSHISEASVDAALTEAVEAVDSQSPIPGPSPLVYPDSTHVERVSSVLPVLNNGHS
ATSPALSTTGPAFTFIDPAPTTQLDLVHKTTDSAPSELPSITHTTTSSAYSASVSLVNSVPSLTSTTIGSA
HTTTPSPLTSTGSVPNATDSTQATPSPTHSTPSPTHHTTIRLTHTTVSPHSSPSPIHTTTPSPTHHTVSP
CTTPSSGHSTTSPTQEAKMSTHTTGAVGPVQTTTSPITTESPSPSTDVAIISSSSAESTGPGTEPLPCS
HPASPPYTKADPTASCTSYQSLASSGSKPLTSPAPDSPEQIPKSPSSPSSSAPEPQHSEHNLAAVAQAP
VPEATGGAGDRRLEEALGTLMSALDDYRGQFPELQGLEQEVTRLESLLMQRQGLTRSRASSLSITVEHAL
ESFSFLNDEDEDNDGPGDRHTSSPEVVAEDRLDSSNGQSLSTGCSALDATLVQHLYHCSRLLKLGTFG
PLRCQEAWALERLLREARVFQEVCSKLVGNSATSAQEVVQFSASRPGFLTQWDQCTEGLSPFICSVER
VLLTFCSQYGARLSLRQPGLAEAVCVKFLLEDALGQKLPRRPQPGPGEQFTIFQFWSYVEALDPSMDACV
TETAEEVLLVQNLNSDDQAVVLKALRLAPEGRLRKDGLRALSSLLVHGNNKVMAAVSTQLRSLSLGPVFR
ERALLCFLDQLEDGDVQTRVAGCLALGCIKAPEGIEPLVYLCQTDTEAVREARQSLQCGEEGQSAHRQ
LEESLDALPCIFGPSSMASTAF

TRTRPLE - GFP Tag - V

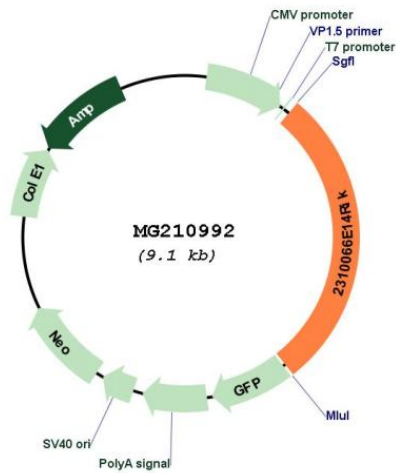
Restriction Sites: Sgfl-MluI

Cloning Scheme:

Cloning sites used for ORF Shutting:



Plasmid Map:



ACCN:	BC030451
ORF Size:	2586 bp
OTI Disclaimer:	The molecular sequence of this clone aligns with the gene accession number as a point of reference only. However, individual transcript sequences of the same gene can differ through naturally occurring variations (e.g. polymorphisms), each with its own valid existence. This clone is substantially in agreement with the reference, but a complete review of all prevailing variants is recommended prior to use. More info
OTI Annotation:	This clone was engineered to express the complete ORF with an expression tag. Expression varies depending on the nature of the gene.
Components:	The ORF clone is ion-exchange column purified and shipped in a 2D barcoded Matrix tube containing 10ug of transfection-ready, dried plasmid DNA (reconstitute with 100 ul of water).
Reconstitution Method:	<ol style="list-style-type: none">1. Centrifuge at 5,000xg for 5min.2. Carefully open the tube and add 100ul of sterile water to dissolve the DNA.3. Close the tube and incubate for 10 minutes at room temperature.4. Briefly vortex the tube and then do a quick spin (less than 5000xg) to concentrate the liquid at the bottom.5. Store the suspended plasmid at -20°C. The DNA is stable for at least one year from date of shipping when stored at -20°C.
RefSeq:	BC030451.1
RefSeq Size:	3209 bp
RefSeq ORF:	2588 bp
Locus ID:	75687
Cytogenetics:	8 D3
Gene Summary:	Downstream effector protein for Rho-type small GTPases that plays a role in cell polarity and directional migration. Acts as an adapter protein, linking active Rho proteins to STK24 and STK26 kinases, and hence positively regulates Golgi reorientation in polarized cell migration upon Rho activation. Involved in the subcellular relocation of STK26 from the Golgi to cytoplasm punctae in a Rho- and PDCD10-dependent manner upon serum stimulation. [UniProtKB/Swiss-Prot Function]