

## Product datasheet for **MG210988**

### Ago4 (NM\_153177) Mouse Tagged ORF Clone

#### Product data:

|                           |   |
|---------------------------|---|
| Product Type:             | Expression Plasmids                     |
| Product Name:             | Ago4 (NM_153177) Mouse Tagged ORF Clone |
| Tag:                      | TurboGFP                                |
| Symbol:                   | Ago4                                    |
| Synonyms:                 | 5730550L01Rik; AI481660; Eif2c4         |
| Mammalian Cell Selection: | Neomycin                                |
| Vector:                   | pCMV6-AC-GFP (PS100010)                 |
| E. coli Selection:        | Ampicillin (100 ug/mL)                  |



[View online »](#)

**ORF Nucleotide Sequence:**

>MG210988 representing NM\_153177  
 Red=Cloning site Blue=ORF Green=Tags(s)

TTTTGTAATACGACTCACTATAGGGCGGCCGGGAATTCGTCGACTGGATCCGGTACCGAGGAGATCTGCC  
 GCC**CGGATCGCC**

ATGGAGGCGCTGGGACCCGGACCTCCAGCCAGCCTCTCCAGCCACCTCGGCGTCTGGCCTTGGAAACCG  
 TTGGGAAACCAATTCGACTGTTAGCCAATCATTTTCAGGTTGAGATCCCTAAAATAGATGTGTATCACTA  
 TGATGTGGATATTAACAGAAAAACGGCCTCGTAGAGTCAACAGGGAGGTGGTAGACACTATGGTGCGG  
 CACTTCAAGATGCAGATATTTGGAGATCGGCAGCCTGGCTACGATGGCAAAAGAAACATGTACACGGCAC  
 ACCCACTGCCAATCGGACGGGATAGGATTGATATGGAGGTGACCCTCCCAGGTGAGGGTAAAGACCAAAAC  
 TTTCAAAGTGTCTGTGCAGTGGGTGTGAGTGTGAGCCTTCAGCTGCTTTTAGAAGCTTTAGCAGGACAC  
 CTGAATGAAGTCCAGATGACTCAGTACAAGCACTTGTGTGATTACAAGGCATCTCCCCTATGAGGT  
 ACACTCCAGTAGGCCGGTCTTTTTCTCACCTCCTGAAGTTATTACCACCTCTGGGAGGGGGCAGAGA  
 GGTTTGGTTTGGCTTTCATCAGTCTGTGAGACCTGCCATGTGGAATATGATGCTCAATATTGATGTATCT  
 GCAACTGCTTTCTACCGGCTCAACCTATCATTGAGTTGATGTGTGAGGTTTTAGACATTAGAATCA  
 ATGAGCAGACAAAACCTCTAACAGACTCCCAGCGTGTCAAGTTTACCAAAGAAATTAGGGGTCTTAAAGT  
 TGAGGTGACTCACTGTGGACAGATGAAACGAAAATATCGAGTTTGTAAATGTGACAAGACGGCCAGCCAGT  
 CATCAAACCTTCCCTTTGCAGCTAGAGAATGGCCAAGCTATGGAATGTACAGTGGCTCAGTATTTTAAAGC  
 AGAAGTATAGTCTGCAGCTGAAACACCCCCACCTTCCCTGCCTTCAAGTGGGGCAAGAGCAAAAGCATA  
 CTACCTACCACCTGAGGTCTGTAATATAGTGGCAGGACAGAGATGTATAAAGAAGCTCACAGACAATCAG  
 ACATCCACCATGATCAAAGCCACGGCAAGATCTGCTCCTGACAGACAGGAGGAAATCAGTAGACTGGTGA  
 AGAGACAACAGCATGGTGGTGGACCTGACCCATACCTGAAGGAATTTGGGATTGTTGTGACAACAGTGA  
 GACAGAGCTCACAGGCAGGGTGTCTCCGGCTCCAATGCTGCAGTATGGAGGCCGGAATAAAACAGTAGCC  
 ACACCCAGCCAGGTGTCTGGGACATGCGAGGAAAACAGTTTTATGCTGGCATTGAAATTAAGTATGGG  
 CAGTGGCTTGTGTTGCGCCTCAGAAACAATGTAGGGAAGATTTGCTAAAGAGTTTCACTGACCAACTTCG  
 TAAAATCTCCAAGGATGCAGGGATGCCCATCCAGGGTCAGCCATGTTTCTGCAAGTATGCTCAAGGTGCA  
 GACAGCGTGGAGCCCATGTTTAAACATCTGAAAATGACATATGTGGCCTGCAGCTAATAGTGGTGATTT  
 TGCTGGGAAGACACCAGTATATGCGGAGGTGAAGCGTGTGGAGATACCCTTCTAGGTATGGCCACACA  
 GTGTGTCCAGGTCAAAAACGTTGTGAAGACCTCGCCCCAGACCCTTCCAACTTTGCCTGAAGATGAAC  
 GCAAAGCTGGGAGGGATTAACAATGTGCTTGTGCCTCACAAAGGCCCTCAGTGTCCAGCAGCCTGTCA  
 TCTTTCTGGGAGCAGATGCTCACTCATCCGCTGCTGGGGACGGGAAGAAGCCTTCTATTGCAGCCGTGGT  
 GGGCAGCATGGACGGCCATCCCAGCCGGTACTGTGCCACAGTCCGGGTACAGACATCTCGACAGGAGATC  
 ACCCAGGAGCTCCTCTACAGCCAGGAGGTGCTGCAGGACCTGACGAGCATGGCTCGGGAGCTGCTGATTC  
 AATTCTATAAGTCCACGCGCTTCAAGCCACACGCATCATCTACTACCGCGGAGGGGTATCCGAGGGACA  
 GATGAAGCAGGTAGCTTGGCCGGAGCTAATAGCAATTCGAAAGGCATGTATAAGCTTGGAGGAAGACTAT  
 CGGCCGGGAATAACTTACATTGTGGTGCAAAAGAGGCACCACACGACTCTTCTGTGCAGATAAAATGG  
 AAAGGTGGGAAAAGTGCAATGTCCCAGCAGGCACCACAGTGGATAGCACCGTCACACACCCGCTGA  
 GTTTGACTTTTACCTCTGTAGTCATGCAGGAATTCAGGGAACAGCCGTCCTTACATTACCAGGCTTG  
 TGGGATGACAACCTGCTTCACTGCAGATGAACTCCAGTACTGACTTACCAGCTCTGTACACCTAGGTGA  
 GGTGCACACGCTCCGCTCCATTCTGCCCTGCATATTATGCCCGCTTGTGGCATTCCGGGCAAGGTA  
 TCATTTGGTGGATAAAGATCATGACAGTGCAGGAGGCAGTACAGTGTGAGCAGAGCAACGGCCGGGAT  
 CCTCAGGCCTTGCTAAGGCTGTGCAGATCCACCATGATACCCAGCACACTATGTATTTTGCC

**ACGCGT**ACGCGGCCGCTCGAG - GFP Tag - GTTTAA

**Protein Sequence:** >MG210988 representing NM\_153177  
Red=Cloning site Green=Tags(s)

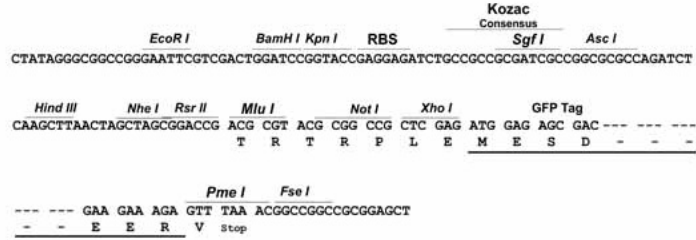
MEALGPGPPASLFQPPRRPGLGTGKPIRLLANHFQVQIPKIDVYHYDVIKPEKRPRRVNREVVDTMVR  
HFKMQIFGDRQPGYDGKRNMYTAHPLPIGRDRIDMEVTLPGEGKDQTFKVSQWVSVVSLQLLEALAGH  
LNEVPDDSVQALDVITRHLPSMRYTPVGRSFFSPPEGYYHPLGGGREVWFGFHQSVRPAMWNMLNIDVS  
ATAFYRAQPIIEFMCEVLDIQININEQTKPLTDSQRVKFTKEIRGLKVEVTHCGQMKRKYRVCNVTRRPAS  
HQTFPLQLENGQAMECTVAQYFKQKYSLLKHPHLPCLQVGQEQQHTYLPLEVCNIVAGQRCIKKLTDNQ  
TSTMIKATARSAPDRQEEISRLVKNSMVGPDYPYLKEFGIVVHNEMTELTGRVLPAPMLQYGGRNKTVA  
TPSQGVWDMRGKQFYAGIEIKVWAVACFAPQKQCREDLLKSFDTQLRKISKDAGMPIQQQPCFCKYAQGA  
DSVEPMFKHLKMTYVGLQLIVVILPGKTPVYAEVKRVGDLLGMATQCVQVKNVVKTSPTLSNLCLKMN  
AKLGGINNVLVPHQRPSVFQQPVIFLGADVTHPPAGDGKKPSIAAVVGSMDGHPSRYCATVRVQTSRQEI  
TQELLYSQEVVQDLTSMARELLIQFYKSTRFKPTRIIYYRGGVSEGQMKQVAWPELIAIRKACISLEEDY  
RPGITYIIVVQKRHHTRLFCADKMERVGKSGNVPAGTTVDSTVTHPSEDFYLCSHAGIQGTSRPSHYQVL  
WDDNCFATADELQLLTYQLCHTYVRCTRSVSIPAPAYYARLVAFRARYHLVDKDHDSAEGSHVSGQSNGRD  
PQALAKAVQIHHDQHTMYFA

TRTRPLE - GFP Tag - V

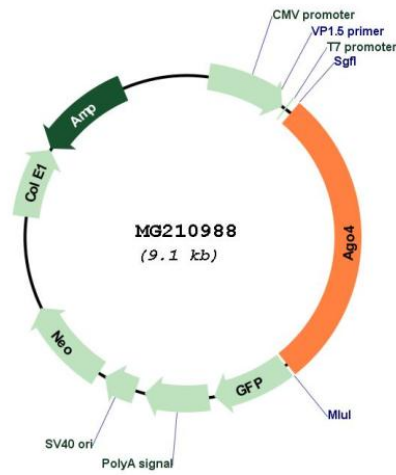
**Restriction Sites:** Sgfl-Mlul

Cloning Scheme:

Cloning sites used for ORF Shutting:



Plasmid Map:



|                        |   |
|------------------------|---|
| ACCN:                  | NM_153177   |
| ORF Size:              | 2583 bp   |
| OTI Disclaimer:        | The molecular sequence of this clone aligns with the gene accession number as a point of reference only. However, individual transcript sequences of the same gene can differ through naturally occurring variations (e.g. polymorphisms), each with its own valid existence. This clone is substantially in agreement with the reference, but a complete review of all prevailing variants is recommended prior to use. <a href="#">More info</a>  |
| OTI Annotation:        | This clone was engineered to express the complete ORF with an expression tag. Expression varies depending on the nature of the gene.  |
| Components:            | The ORF clone is ion-exchange column purified and shipped in a 2D barcoded Matrix tube containing 10ug of transfection-ready, dried plasmid DNA (reconstitute with 100 ul of water).  |
| Reconstitution Method: | <ol style="list-style-type: none"><li>1. Centrifuge at 5,000xg for 5min.</li><li>2. Carefully open the tube and add 100ul of sterile water to dissolve the DNA.</li><li>3. Close the tube and incubate for 10 minutes at room temperature.</li><li>4. Briefly vortex the tube and then do a quick spin (less than 5000xg) to concentrate the liquid at the bottom.</li><li>5. Store the suspended plasmid at -20°C. The DNA is stable for at least one year from date of shipping when stored at -20°C.</li></ol> |
| RefSeq:                | <a href="#">NM_153177.3</a> , <a href="#">NP_694817.2</a>   |
| RefSeq Size:           | 6527 bp   |
| RefSeq ORF:            | 2586 bp   |
| Locus ID:              | 76850   |
| UniProt ID:            | <a href="#">Q8CJF8</a>  |
| Cytogenetics:          | 4 D2.2  |
| Gene Summary:          | Required for RNA-mediated gene silencing (RNAi). Binds to short RNAs such as microRNAs (miRNAs) and represses the translation of mRNAs which are complementary to them. Lacks endonuclease activity and does not appear to cleave target mRNAs.[UniProtKB/Swiss-Prot Function]  |