

Product datasheet for **MG210978**

Cdhr1 (NM_130878) Mouse Tagged ORF Clone

Product data:

Product Type:	Expression Plasmids
Product Name:	Cdhr1 (NM_130878) Mouse Tagged ORF Clone
Tag:	TurboGFP
Symbol:	Cdhr1
Synonyms:	mKIAA1775; Pcdh21; Prcad
Mammalian Cell Selection:	Neomycin
Vector:	pCMV6-AC-GFP (PS100010)
E. coli Selection:	Ampicillin (100 ug/mL)



[View online »](#)

ORF Nucleotide Sequence:

>MG210978 representing NM_130878
 Red=Cloning site Blue=ORF Green=Tags(s)

TTTTGTAATACGACTCACTATAGGGCGGCCGGGAATTCGTCGACTGGATCCGGTACCGAGGAGATCTGCC
 GCC**CGGATCGCC**

ATGAGCGTGGCCACGGGTGCGCCTGGTCTGGGGCTGCTGCGCATTTACCTAGCCAGGCCAACTTTG
 CCCCTCACTTCTTTGACAATGGAGTGGGCAGCACCAACGGGAACATGGCCCTGTTTCAGCCTCCAGAAAGA
 CACTCCTGTAGGTTCTCATGTGTACACCCTAAATGGGACAGACCCTGAGGGAGACCTATCTCCTACCAC
 ATCAGCTTTGACCCAGCACTAGAAGTGTCTTTTCTGTTGATCCCAATTTTGAAACATCACTCTGGTGG
 AAGAGCTGGACAGAGAAAGGGAAGATGAGATTGAAGCCATCATCAGCATTCCGATGGCCTGAACCTGGT
 GGCAGAGAAAAGTCGTGATACTGGTGACAGATGCCAATGATGAAGCACCCAGGTTCCATCCAGGAGCCTTAC
 ATCATCCGGGTTCCAGAGAACATACCTGCTGGGAGCAGCATCTTAAGGTCCAGGCAGAGGACAAGGACA
 CAGGCTCTGGAGGCAGTGTACCTACTCCCTTCAGAACCTACACTCCTCCAAGTTCTCCATGGACCGTCA
 CAGCGGGTGTGAGACTCCAGGCTGGGGCCACTGGACTATGAGAAGTCGAGGGCTCATTACATCACT
 GTGATTGCCAAGGATGGTGGGGCAGGCTTCGAGGGGCTGACATGGTGTCTCAGCCACCACCACCGTCA
 CCATCAATGTGGAAGATGTTGAGACACGGCCCTATCTTCGTGGGTACACCCTACTATGGTTACGTGTA
 TGAAGACACCCTTCTGGCTCAGAGGTGCTGACGGTGGTTGCCATAGATGGAGACCAGGCCAAACCCAAAC
 CACATCCTCTACAGGCTCTTGAATGAGAGTGACGGAATCTTTGAAATTAATGAGACATCTGGAGCCATCT
 CCGTCTTCAGAGCCCTGCCCTGCTCCGAAGAGAGGTGTATGAATTCATGTACAGGTGACAGAGGTCAA
 CTCTCCAGGAAGCCAGCTGCTCAGGCCACAGTCCCAGTGACCATCAGGATCGTGGACCTCAACAACCAC
 CCTCCAACCTTCTATGGAGAGAGTGGGCCCCAGAACAAGTTTGAGCTCTCTATGTTTGAGCACCCACCCC
 AGGGGGAGATTCTCCGTGGACTCAAGATCACTGTCAACGACTCAGACCAGGGAGCCAATGCCAAATTCAA
 CTTACGGCTGGTGGACCTGGAGGCATCTCCGAGTGGTGCCACAGACCCTCCTGAATGAAGCCCAAGTG
 ACCATCATAGTGGAAAACCTCAGCTGCCATTGACTTTGAAAAGTCTAAGTTGTTGACCTTCAAGCTCCTGG
 CCATTGAAGTGAACACCCAGAGAAAGTTGAGTTCACAGCAGACATTGTGATCCAGCTTCTGGACACCAA
 TGATAATGTCCCAAGTTCACCTCGCACTACTACATTGCCAGGATCCCAGAGAATGCTCCAGGAGGCTCC
 AACGTGGTGGCTGTACAGCTGTGGATCCAGATACAGGACCATGGGGCAAAGTCCACTATTCCATCTATG
 GGACCGGGTACAGCTGTTCTTAATTCACCCATCCACTGGGCTTATCTACACTCAGCCCTGGGCCAGCCT
 GGATGCTGAGGGTACTTCGAGGTACAATTTTATGTGAAGGCAGAAGACATGGATGGAAGGTACAGCCTG
 GCTGAGGTGTTTGTCACTCTCTGGATGTCAATGACCACTACCCCGATTTGTACAGAGCGTCCAGGAAA
 AGACAATGGTACTGGGGACCCACTGAAAATTGAGGCAACAGACCAGGATGCAGAGGAGCCTAACAACTT
 GGTAGACTACTCCATTACCCGTGCAGAGCCAGTCAACGTGTTTGACATTGATGCACACACAGGGGAAATT
 AGGCTCAAGAATTCATCCGCTCCTTGGAGGCCCTACACAACATCACACCCAGTGGGGACTACTCATGGT
 CCCTACAGGTGCAGGCCAAGGACCGAGGCTCCCATCTTTTCAGTACAACAGCCTTACTCAAGATCGACAT
 CACAGATACAGAGAGGCTATCCAGAGGTTCCATGGCTGCCTTCTGATTACAGACCAAGGACAATCCCATG
 AAAGCCGTAGGTGTACTGGCTGGTGTATGGCAATTGTTGTGGCCATAACTGTCTCATCTCCACGGCTA
 CCTTCTGGCGTAACAAGAAGTCTAACAAGTCTGCTGCTGCGGGTGTGCTCCGTAGAAGGCCAGCCC
 TGCTCCCACACAGTTCGAATAGAGTGGCTCAAATTCAGGAGGGCCAAGGCTGCTACCAAGTTTATACTC
 AAAGAGGATTCTCCAATGAGAACTGCAATAACAGCAGAGTGGGAGTCATGGTGCCCCAAGAGCTCCAG
 CTCTCCACACCCCTAAAATGGCATCCAGTATGGTGGCCCAACAGACAGTGCCTACTGTCTCTGGATC
 CCTCACCCACAGCCATCCACAGTTACCCACACCCAAAGACCCTGGGAGGCCCGTTAGTCTTCTTTG
 GTGCTGAGCTCAAGCAAAGTTTGAGAAGAAGAGTTAGACAACAAGGCCTATATC

ACGCGTACGCGGCCGCTCGAG - GFP Tag - GTTTAA

Protein Sequence: >MG210978 representing NM_130878
Red=Cloning site Green=Tags(s)

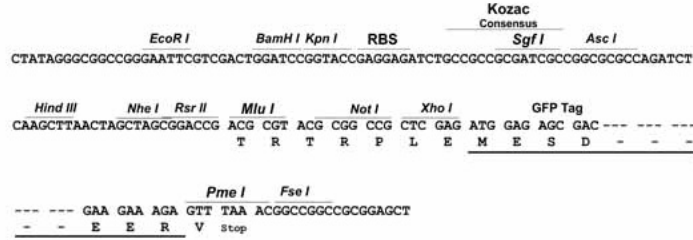
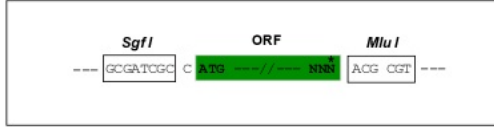
MRRGPRVALVLGLLRIYLAQANFAPHFFDNGVVGSTNGNMALFSLPEDTPVGS HVYTLNGTDPEGDPISYH
ISFDPSTRSVFSVDPNFGNITLVEELDREREDEIEAIIISDGLNLVAEKVVILVTDANDEAPRFIQEPY
IIRVPENIPAGSSIFKVAEDKDTGSGGSVTYSLQNLHSSKF SMDRHSGVLR LQAGATLDYEKSRAHYIT
VIAKDGGGRLRGADMVFSATTTVTINVEDVQDTAPIFVGT PYYGYVYEDTLPGSEVLT VVAIDGDRGKPN
HILYRLLNESDGIFEINETSGAISVLQSPALLRREYELHVQVTEVNSPGSPAAQATVPVTIRIVDLNNH
PPTFYGESGPQNKFELSMFEHPPQGEILRGLKITVNDSDQGANAKFNLRLVGP GGIFRVVPQT VLN EAQV
TIIVENSAAIDFEKSKLLTFKLLAIEVNTPEKFSSTADIVIQLLDTNDNVPKFTSHYYIARIPENAPGGS
NVVAVTAVDPDTGPWGKVHYSIYGTGSDLFLIHPSTGLIYTQPWASLDAEGTSRYNFYVKAEDMDGRYSL
AEVFTLLDVNDHYPQFVQSVQEKTMVLGTLKIEATDQDAEEPNNLVDYSITRAEPVNVFDIDAHTGEI
RLKNSIRSLEALHNITPSGDYSWSLQVQAKDRGSPSFSTALLKIDITDTERLSRGSMAAFLIQTKDNPM
KAVGVLAVMAIVVAITVLISTATFWRNKKS NKVLPVRRVLR RRPSPAPHTVRIEWLKFRRAKAATKFIL
KEDSPNENCNNSRVGMVPPRAPALPPPKMASSMVAQQT VPTVSGSLTPQSPQLPTPKTLGGPVQSSL
VSELKQKFEKSLDNKAYI

TRTRPLE - GFP Tag - V

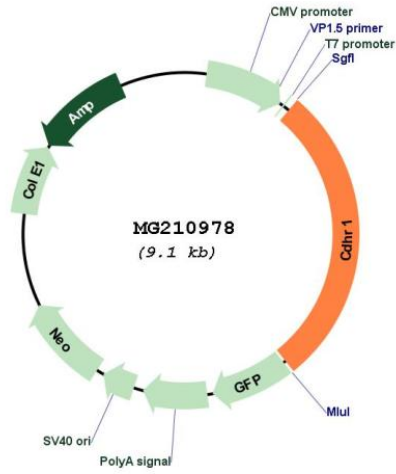
Restriction Sites: Sgfl-Mlul

Cloning Scheme:

Cloning sites used for ORF Shutting:



Plasmid Map:



ACCN:	NM_130878
ORF Size:	2577 bp
OTI Disclaimer:	<p>Due to the inherent nature of this plasmid, standard methods to replicate additional amounts of DNA in E. coli are highly likely to result in mutations and/or rearrangements. Therefore, OriGene does not guarantee the capability to replicate this plasmid DNA. Additional amounts of DNA can be purchased from OriGene with batch-specific, full-sequence verification at a reduced cost. Please contact our customer care team at custsupport@origene.com or by calling 301.340.3188 option 3 for pricing and delivery.</p> <p>The molecular sequence of this clone aligns with the gene accession number as a point of reference only. However, individual transcript sequences of the same gene can differ through naturally occurring variations (e.g. polymorphisms), each with its own valid existence. This clone is substantially in agreement with the reference, but a complete review of all prevailing variants is recommended prior to use. More info</p>
OTI Annotation:	This clone was engineered to express the complete ORF with an expression tag. Expression varies depending on the nature of the gene.
Components:	The ORF clone is ion-exchange column purified and shipped in a 2D barcoded Matrix tube containing 10ug of transfection-ready, dried plasmid DNA (reconstitute with 100 ul of water).
Reconstitution Method:	<ol style="list-style-type: none"> 1. Centrifuge at 5,000xg for 5min. 2. Carefully open the tube and add 100ul of sterile water to dissolve the DNA. 3. Close the tube and incubate for 10 minutes at room temperature. 4. Briefly vortex the tube and then do a quick spin (less than 5000xg) to concentrate the liquid at the bottom. 5. Store the suspended plasmid at -20°C. The DNA is stable for at least one year from date of shipping when stored at -20°C.
RefSeq:	NM_130878.3
RefSeq Size:	4364 bp
RefSeq ORF:	2580 bp
Locus ID:	170677
UniProt ID:	Q8VHP6
Cytogenetics:	14 B
Gene Summary:	Potential calcium-dependent cell-adhesion protein. May be required for the structural integrity of the outer segment (OS) of photoreceptor cells.[UniProtKB/Swiss-Prot Function]