

## Product datasheet for **MG210964**

### **Rhbdf1 (NM\_010117) Mouse Tagged ORF Clone**

#### **Product data:**

Product Type:	Expression Plasmids
Product Name:	Rhbdf1 (NM_010117) Mouse Tagged ORF Clone
Tag:	TurboGFP
Symbol:	Rhbdf1
Synonyms:	C16ORF8; Dist; Dist1; Egfr-rs; mKIAA4242
Mammalian Cell Selection:	Neomycin
Vector:	pCMV6-AC-GFP (PS100010)
E. coli Selection:	Ampicillin (100 ug/mL)



[View online »](#)

**ORF Nucleotide Sequence:**

>MG210964 representing NM\_010117  
 Red=Cloning site Blue=ORF Green=Tags(s)

TTTTGTAATACGACTCACTATAGGGCGGCCGGGAATTCGTCGACTGGATCCGGTACCGAGGAGATCTGCC  
 GCC**CGGATCGCC**

ATGAGTGAAGCCAGGAGAGACAGTACTAGCAGCCTGCAACGCAAGAAACCCCATGGCTCAAGTTGGACA  
 TCCCAGCCGTGGTGCCCCAGCAGCAGAGGAGCCAGCTTCTCGAGCCGTGCGGCGACAGGCTTCTT  
 GCGGAGTGTGAGTATGCCAGCTGAGACAGCCCGGGTCCCATCACCCACCATGAGCCTCGCCGGCTGGT  
 CTGCAGCGTCAGACATCCATCACACAGACCATCCGCAGGGGGACAGCAGACTGGTTTGGAGTGAGCAAGG  
 ACAGTGACAGCACCCAGAAGTGGCAGCGCAAGAGCATCCGTCAGTGCAGCCAGCGGTATGGGAAGCTAAA  
 GCCGCAGTCCATCCGGGAGCTGGACCTGCCAGCCAGGACAATGTGTCCCTAACCCAGCACCGAGACACCA  
 CCTCCCCTCTACGTGGGGCCATGCCAGCTGGGCATGCAGAAGATCATAGACCCTCTGGCCCGAGGCCGGG  
 CCTTTGCGATGGCTGATGACACTGCCGATGGCCTGAGTGCCCCCACACTCCCGTACACCAGGTGCAGC  
 CTCCTCTGCTCTTTCTCCAGCTCCCGCTCAGGTTTCAACCGACTCCCTCGGCGTCGAAACGTGAATCG  
 GTGGCCAAAGATGAGCTTCCGGGGCGCTGCAGCATTGGTGAAGGGTCGGTCTATTAGGGATGGCACTTTAC  
 GAAGGGGACAGCGCCGAAGCTTTACCCCTGCCAGCTTTCTTGGGAAGACATGGTGGACTTCCCTGATGA  
 GTTGGATACATCTTTCTTGGCTCGGGAAGGTGTCTCCACGAGGAGATGTCCACGTACCCAGATGAGGTG  
 TTTGAGTCCCATCAGAGGCAGCGCTCAAGGACTGGGAGAAAAGCCCGGATCAGGCCGACCTCACGGGTG  
 GGGCCCTGGACCGCAGTGAAGTGTGAGAGAAGCCACTTGATGTTGCCCTGGAACGAGGCTGGAGAAAAGCA  
 GAAGGAAGGCGGCCCTTAGCCCCGAGCCCAAGTGGCGCTTCGCCAGGAGGTGGTCAAGCGCGGGGA  
 CCCAGGAGGGGTGAGCGTATCGCTGTGCCAGTGCAGCAACTCTTCGCTCGGAAAAGCGGCCCTTATGGTC  
 TGGGGATGGTGGGACGGCTCACCAACCGCACGTACCGGAAACGCATCGACAGTATGTCAAGCGCGAGT  
 CGAGGACATGGATGATCACAGGCCCTTCTCACTTACTGGCTCACCTTTGTGCACTCACTGGTCACCAATT  
 CTGGCTGTGTGCATCTATGGCATAGCGCCCGTGGGCTTCTCGCAGCATGAGACGGTGGACTCGGTACTTC  
 GGAAGCGGGGTGTCTATGAGAATGTCAAATACGTCCAGCAGGAGAACTTCTGGATTGGCCCCAGCTCGGA  
 GGCCCTCATTCACTTGGGTGCCAAGTTCTCACCTGCATGCGTCAGGACCCACAGGTGCACAGCTTCATC  
 CTGGCTGCCCGGAGCGTGAAAAGCACTCGGCTTGTGTACGCAATGACCGGTCTGGGTGTGTGCAGA  
 CTTCAAGGAGGAGTGTCTGTCACGTTGGCGGTGGGTGAAGTGGCCCGTTCATCCTAGTCCCCAGA  
 CCTTGACAGGCAACAAGAGACAGTTTGGTCTGTCTGCCACCAGGACCCAGGGTATGTGACGAGCCTTCC  
 TCTGAGGATCCCCACGAGTGGCCAGAAGATATACCAAGTGGCCGATCTGCACAAAAGCAGCGCGGGGA  
 ACCACACTAACCCCTCACATGGACTGTGTATAACAGGCCGGCCTTGTGCATTGGCACCAAGGGCAG  
 GTGTGAGATCACCTCCCGGGAGTACTGTGACTTATGAGGGGCTACTTCCATGAGGAGGCCACACTCTGC  
 TCTCAGGTGCACTGCATGGACGATGTCTGTGGCCTCCTGCCTTTCCTCAATCCTGAGGTGCCTGACCAGT  
 TCTACCGCTGTGGCTGTCCCTTCTCTGCAGCTGGGATCCTGCACTGCTTGGTGTCCATCTGCTTCCA  
 GATGACGGTCTGCGGGACCTGGAGAAGCTGGCAGGCTGGCACCCGATAGCCATCATCTACCTGTGAGT  
 GGTATCACGGGCAATCTAGCCAGTGCCATCTTCTGCCATACCGGCAGAGGTAGGTCCGGCCGGCTCCC  
 AGTTTGGCATCCTGGCCTGCCTTTTGTGGAGTTGTTCCAGAGCTGGCAGATCCTGGCCCGACCTGGCG  
 TGCTTTCTCAAGCTCCTGGCCGTGGTGTCTTCTCTTTGCTTTGGGCTGCTGCCCTGGATCGACAAC  
 TTGCCCCACATCTCGGGCTTGTGACGGCCTTCTCTTTCTTTGCTTCTGCCTTCTGCCTTACATCAGCTTTG  
 GCAAGTTCGACCTGTACCGCAAGCGCTGCCAGATCATCATCTTCCAGGTCGTCTTCTGGGCTGTGGC  
 CGGCTGGTGGTCTTCTACTTCTACCCGGTGCCTGTGAATGGTGGAGTTCCTCACCTGCATCCCT  
 TTCACGGACAAGTTCTGTGAAAAGTACGAGCTGGACGCTCAGCTCCAC

**ACCGTACGCGGCCGCTCGAG** - GFP Tag - GTTTAA

**Protein Sequence:** >MG210964 representing NM\_010117  
 Red=Cloning site Green=Tags(s)

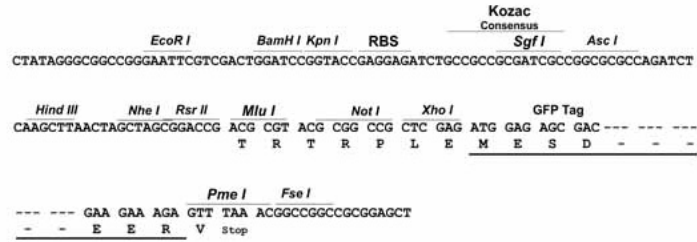
```
MSEARRDSTSSLQRKKPPWLKLDIPAVVPPAAEEPSFLQPVRQAFRLRSVSMPAETARVPSPHHEPRRLV
LQRQTSITQTIRRGTDWFGVSKDSDSTQKWQRKSIRHCSQRYGKLPQVIRELDLPSQDNVSLTSTETP
PPLYVGPCQLGMQKIIDPLARGRAFRMADDTADGLSAPHTPVTPGAASLCSFSSSRSGFNRLPRRRKRES
VAKMSFRAAAALVKGRSIRDGTLRRGQRRSFTPASFLEEDMVDFFDELDTFFFAREGVLHEEMSTYPDEV
FESPSEAALKDWEKAPDQADLTGGALDRSELERSHLMLPLERGWKQKEGGPLAPQPKVRLRQEVVSAAG
PRRGQRIAVPVRKLFAREKRPYGLGMVGRLTNRTYRKRIDSYVKRQIEDMDDHRPFPTYWLTFFVHSLVTI
LAVCIYGIAPVGFSGHETVDSVLRKRGVYENVKYVQENFWIGPSSEALIHLGAKFSPCMRQDPQVHSFI
LAAREREKHSACCVRNDRSGCVQTSKEECSSTLAVVWKWPVHPSAPDLAGNKRQFGSVCHQDPRVCDEPS
SEDPHEWPEDITKWPICKSSAGNHTNHPHMDCVITGRPCCIGTKGRCEITSREYCDFMRGYFHEEATLC
SQVHCMDVCGLLPFLNPEVPDQFYRLWLSLFLHAGILHCLVSI CFQMTVLRDLEKLAGWHRIAIYLLS
GITGNLASAIFL PYRAE VGPAGSQFGILACLVELFQSWQILARPWRAFFKLLAVVLF LFAFGLLPWIDN
FAHISGFVSGLFLSFAFLPYISFGKFDLYRKRQIIIFQVVFLGLLAGLVVLFYFYPVRCWECEFLTCIP
FTDKFCEKYELDAQLH
```

TRTRPLE - GFP Tag - V

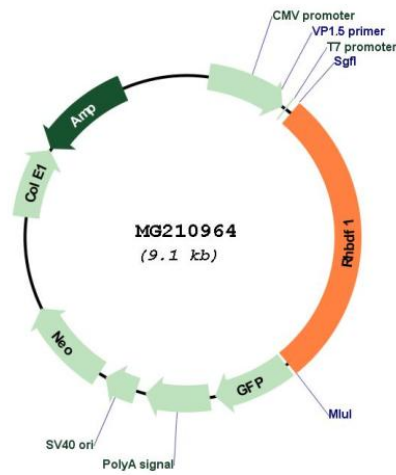
**Restriction Sites:** Sgfl-MluI

Cloning Scheme:

Cloning sites used for ORF Shutting:



Plasmid Map:



<b>ACCN:</b>	NM_010117
<b>ORF Size:</b>	2568 bp
<b>OTI Disclaimer:</b>	The molecular sequence of this clone aligns with the gene accession number as a point of reference only. However, individual transcript sequences of the same gene can differ through naturally occurring variations (e.g. polymorphisms), each with its own valid existence. This clone is substantially in agreement with the reference, but a complete review of all prevailing variants is recommended prior to use. <a href="#">More info</a>
<b>OTI Annotation:</b>	This clone was engineered to express the complete ORF with an expression tag. Expression varies depending on the nature of the gene.
<b>Components:</b>	The ORF clone is ion-exchange column purified and shipped in a 2D barcoded Matrix tube containing 10ug of transfection-ready, dried plasmid DNA (reconstitute with 100 ul of water).
<b>Reconstitution Method:</b>	<ol style="list-style-type: none"><li>1. Centrifuge at 5,000xg for 5min.</li><li>2. Carefully open the tube and add 100ul of sterile water to dissolve the DNA.</li><li>3. Close the tube and incubate for 10 minutes at room temperature.</li><li>4. Briefly vortex the tube and then do a quick spin (less than 5000xg) to concentrate the liquid at the bottom.</li><li>5. Store the suspended plasmid at -20°C. The DNA is stable for at least one year from date of shipping when stored at -20°C.</li></ol>
<b>RefSeq:</b>	<a href="#">NM_010117.1</a> , <a href="#">NP_034247.1</a>
<b>RefSeq Size:</b>	2904 bp
<b>RefSeq ORF:</b>	2571 bp
<b>Locus ID:</b>	13650
<b>UniProt ID:</b>	<a href="#">Q6PIX5</a>
<b>Cytogenetics:</b>	11 18.83 cM
<b>Gene Summary:</b>	Regulates ADAM17 protease, a sheddase of the epidermal growth factor (EGF) receptor ligands and TNF, thereby plays a role in sleep, cell survival, proliferation, migration and inflammation. Does not exhibit any protease activity on its own.[UniProtKB/Swiss-Prot Function]