

Product datasheet for **MG210951**

Tgfbr3 (NM_011578) Mouse Tagged ORF Clone

Product data:

Product Type:	Expression Plasmids
Product Name:	Tgfbr3 (NM_011578) Mouse Tagged ORF Clone
Tag:	TurboGFP
Symbol:	Tgfbr3
Synonyms:	1110036H20Rik; AU015626; AW215636; TBR111
Mammalian Cell Selection:	Neomycin
Vector:	pCMV6-AC-GFP (PS100010)
E. coli Selection:	Ampicillin (100 ug/mL)



[View online »](#)

ORF Nucleotide Sequence:

>MG210951 representing NM_011578
 Red=Cloning site Blue=ORF Green=Tags(s)

TTTTGTAATACGACTCACTATAGGGCGGCCGGAATTCGTCGACTGGATCCGGTACCGAGGAGATCTGCC
 GCC**CGATCGCC**

ATGGCAGTGACATCCCACCACATGGTCCCTGTGTTTGTCTGATGAGCGCTGCCTGGCCACCCGAGGTC
 CAGAGCCCAGCACCCGGTGTGAAGTGTACCGATCAGTGCCTCTCATCCAGTCCAGGCCCTGATGGAGAG
 CTTACCGTTCTGTCTGGCTGTGCCAGCAGAGGCCACTGGGCTGCCAAGGGAGGTTCCATCCTAAAC
 CTCGCGAGTACAGACCAAGGACTAGGCCAGCCGACAGAGAGGTTACCCTGCATCTGAACCCATTGCCCT
 CCGTGCACACTCACCACAAGCCTGTTGTCTCTGCTCAACTCCCACAGCCCCTGGTGTGGCATGTGAA
 GACAGAGAGACTGGTGTGGTGTCCCAGACTTTCCTGGTTTCGGAGGGTTCTGTGGTCCAGTTTTCA
 TCAGGAACTTCTCCTTGACAGCAGAAACAGAGAAAGGAGTTTCCCTCAAGAAAATGAGCATCTGCTAC
 ACTGGGCCAAAAGGAATATGGAGCAGTACTTCATTACCGAATTAAGATAGCAAGAAATATCTATAT
 TAAAGTGGGAGAAGATCAAGTGTCCCTCCCACGTGAACATAGGGAAAAATTTCTCTCGCTCAATTAC
 CTTGCGGAGTACCTTCAACCCAAAGCCGCCGAAGGTTGTGTCTGGCCAGTCAGCCCCACGAGAAGGAAG
 TGCATATCATTGAGTAACTCCTCCCAACTCCAATCCTTACAGCACCTTCCAGGTGGATATAATAATTGA
 CATACGACTGTCTCGAGAGGATCCTGAGGTGGTCAAAAACCTCGTCTGATCTTGAAGTGCAAAAAATCT
 GTCAACTGGGTGATCAAGTCTTTGACGTCAAGGGAAACTTGAAGTTATTGCTCCTGACAGTATTGGCT
 TTGGAAAAGAGAGTGAACGATCCATGACAGTGACCAAAATGGTAAGAAATGACATCCCTTCCACCCAAGA
 GAATCTGATGAAGTGGCATTGGACAATGGCTACAGCCCAGTGACGTCAACACCATAGCTCCTGTGGCC
 AATAGATTTTATCTTCGGCTTGAGAACAACGAGGAGATGAGAGATGAGGAAGTCCACACCATTCCTCTG
 AGCTTCGGATCCTGTGGGCCCTGACCACCTGCCCTGGCAGGCCATCCTTCCAAGGGGAAATCCC
 AAATGGAGGTTTTCCCTTCCCATTCCCAGATATCCCAGGAGAGGCTGGAAGGAGGAGAAGATAGGATC
 CCCCAGCCAAAGGAACCCATCATTCCCAGAGTTCAATTGCTTCCAGACCACAGAGAGCCAGAAGAAGTGC
 AAGGGGGCGTGAATATCGCCCTGTGAGTCAATGTGACAATGAAAAGATGGTGGTAGCTGTAGACAAAGA
 TTCTTTCCAGACCAATGGCTACTCGGGGATGGAGCTCACCTGTTGGATCCTTCTGCAAAGCCAAGATG
 AATGGTACCCACTTTGACTGGAGTCTCCGCTGAATGGCTGTGGTACTAGACATAGGAGGTGAGCCCGAG
 ATGGTGTGGTTTACTATAACTCTATTGTGGTGCAGGCTCCATCCCCTGGGATAGCAGTGGCTGGCCAGA
 CGGCTACGAAGATTTGGAGTCGGGTGATAATGGATTTCTGGAGACACAGATGAAGGAGAAACTGCCCC
 CTGAGCCGTGCTGGAGTGGTAGTGTAACTGCAGCTTGGCCAGCTGAGGAGTCCAGTGGCTTCCAGG
 ACCAGCTCGATGGAAATGCTACCTTCAACATGGAGCTGTATAACACAGACCTTTTCTGGTGCCCTCCC
 AGGGGTCTTCTGTGGCAGAGAATGAGCATGTATATGTTGAGGTGTCTGTCACTAAGGTGACCAAGAT
 CTGGGATTTGCCATCAAACCTGCTTTATCTCTCCATACTCAAACCCAGACAGAATGTCTGATTACACCA
 TCATCGAGAACATCTGTCCGAAGGATGACTCTGTGAAGTTCTACAGCTCCAAGAGAGTGCATTTCCCAT
 CCCACATGCTGAAGTGGACAAGAAGCGGTTGAGCTTTGTGTTCAAGTCCGTGTTCAACACCTCCCTGCTC
 TTCCTGCACTGCGAGCTGACGCTGTGCTTAGGAAGAAGGGCTCCAGAAGCTGCCAAAGTGTGTGACTC
 CTGACGACGCCTGCACCTCTCTAGATGCCACCATGATCTGGACCATGATGCAGAATAAGAAGACATTAC
 CAAGCCCCTGGCGTGGTCTCCAAGTAGATTATAAAGAAAATGTTCCAACATGAAGGAGTCCAGTCCG
 GTTCTCTCTCCACAGATTTTCCACGGCTGGACACGCTCACCGTATGGGCATTGCGTTTGCAGCAT
 TTGTGATCGGAGCACTCCTGACGGGGCCTTGTGGTATATCTACTCCACACAGGGGAGACGGCACGAAG
 GCAGCAAGTCCCTACCTCGCCACCAGCCTCGGAGAACAGCAGCGCAGCCACAGCATAGGGAGCACTCAG
 AGCACTCCTGCTCTAGCAGCAGCACGGCC

ACGGTACGCGGCCGCTCGAG – GFP Tag – GTTTAA

Protein Sequence: >MG210951 representing NM_011578
Red=Cloning site Green=Tags(s)

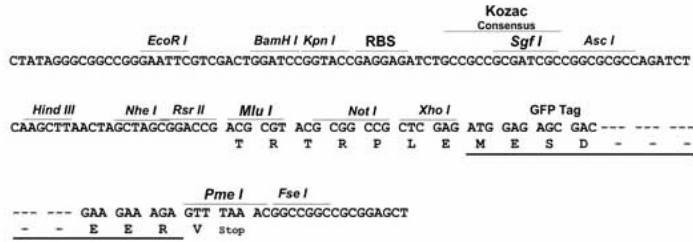
MAVTSHHMVPVFLMSACLATAGPEPSTRCELSPISASHPVQALMESFTVLSGCASRGTGLPREVHILN
LRSTDQGLGQPQREVTLHLNPIASVHTHHKPVVFLNNSPQLVWHVKTERLAAGVPRLFLVSEGSVVQFS
SGNFSLTAETEERSFPQENEHLLHWAQKEYGAVTSFTELKIARNIYIKVGEDQVFPPTCNIGKNFLSLNY
LAEYLQPKAAEGCVLASQPHEKEVHIIELISPNSNPYSTFQVDIIIDIRPAREDPEVVKNLVLILKCKKS
VNWVIKSFDVKGNLKVIAPDSIGFGKESERSMTVTKLVRNDIPSTQENLMKWALDNGYSPVTSYTIAPVA
NRFHLRLENNEEMRDEEVHTIPPELRILLGPDHLPALDSPSFQGEIPNGGFPPFPDIPRRGWKEGEDRI
PRPKETIIPRVQLLPDHREPEEVQGGVNIASVKCDNEKMVVAVDKDSFQTNGYSGMELTLLDPSCAKM
NGTHFVLESPLNGCGTRHRSAPDGVVYNSIVVQAPSPGDSSGWPDPGYEDLESGDNGFPGDTDEGETAP
LSRAGVVVFNCSLRQLRSPSGFQDQLDGNATFMELYNTDLFLVPSPGVFSVAENEHVYVEVSVTKADQD
LGFAIQTCFISPYSNPDRMSDYTIENICPKDDSVKIFYSSKRVHFPHPHAEVDKKRFSFVFKSVFNTSLL
FLHCELTLCSRKKGSQKLPKCVTPDDACTSLDATMIWTMMQNKKTFKPLAVVLQVDYKENVPMKESPP
VPPPPQIFHGLDTLVMGIAFAAFVIGALLTGALWYIYSHTGETARRQQVPTSPPASENSAAHSIGSTQ
STPCSSSSTA

TRTRPLE - GFP Tag - V

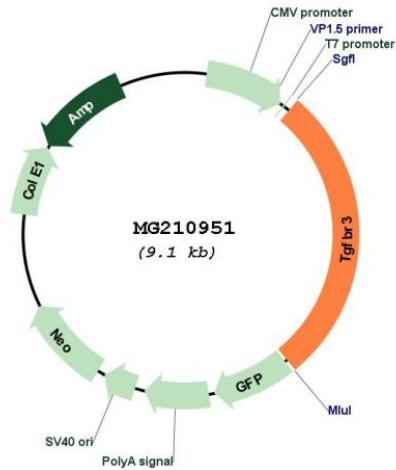
Restriction Sites: Sgfl-MluI

Cloning Scheme:

Cloning sites used for ORF Shutting:



Plasmid Map:



ACCN:	NM_011578
ORF Size:	2550 bp
OTI Disclaimer:	<p>Due to the inherent nature of this plasmid, standard methods to replicate additional amounts of DNA in E. coli are highly likely to result in mutations and/or rearrangements. Therefore, OriGene does not guarantee the capability to replicate this plasmid DNA. Additional amounts of DNA can be purchased from OriGene with batch-specific, full-sequence verification at a reduced cost. Please contact our customer care team at custsupport@origene.com or by calling 301.340.3188 option 3 for pricing and delivery.</p> <p>The molecular sequence of this clone aligns with the gene accession number as a point of reference only. However, individual transcript sequences of the same gene can differ through naturally occurring variations (e.g. polymorphisms), each with its own valid existence. This clone is substantially in agreement with the reference, but a complete review of all prevailing variants is recommended prior to use. More info</p>
OTI Annotation:	This clone was engineered to express the complete ORF with an expression tag. Expression varies depending on the nature of the gene.
Components:	The ORF clone is ion-exchange column purified and shipped in a 2D barcoded Matrix tube containing 10ug of transfection-ready, dried plasmid DNA (reconstitute with 100 ul of water).
Reconstitution Method:	<ol style="list-style-type: none"> 1. Centrifuge at 5,000xg for 5min. 2. Carefully open the tube and add 100ul of sterile water to dissolve the DNA. 3. Close the tube and incubate for 10 minutes at room temperature. 4. Briefly vortex the tube and then do a quick spin (less than 5000xg) to concentrate the liquid at the bottom. 5. Store the suspended plasmid at -20°C. The DNA is stable for at least one year from date of shipping when stored at -20°C.
RefSeq:	NM_011578.4
RefSeq Size:	6074 bp
RefSeq ORF:	2553 bp
Locus ID:	21814
UniProt ID:	O88393
Cytogenetics:	5 E5
Gene Summary:	Binds to TGF-beta. Could be involved in capturing and retaining TGF-beta for presentation to the signaling receptors (By similarity).[UniProtKB/Swiss-Prot Function]