

## Product datasheet for **MG210943**

### Arhgef15 (NM\_177566) Mouse Tagged ORF Clone

#### Product data:

Product Type:	Expression Plasmids
Product Name:	Arhgef15 (NM_177566) Mouse Tagged ORF Clone
Tag:	TurboGFP
Symbol:	Arhgef15
Synonyms:	D130071N09; D530030K12Rik; E5
Mammalian Cell Selection:	Neomycin
Vector:	pCMV6-AC-GFP (PS100010)
E. coli Selection:	Ampicillin (100 ug/mL)



[View online »](#)

**ORF Nucleotide Sequence:**

>MG210943 representing NM\_177566  
 Red=Cloning site Blue=ORF Green=Tags(s)

TTTTGTAATACGACTCACTATAGGGCGGCCGGGAATTCGTCGACTGGATCCGGTACCGAGGAGATCTGCC  
 GCC**CGGATCGCC**

ATGTCTGCACAGTCTCTTCTGCAGCAACGCCCTACCTTGAAGCCCCCTCGGATCATCCGCCCCGAC  
 CCCCATCTCGGCATAGGGCTCCACACTCCCGGGGCTCTCCACAATGGCTCCTCTCCGAAAGCACTTCC  
 TCAAATATCCAATGATGCATCGGCCTCAGTGTGCACCTCCATCTTCTGGGAGCCCCCACGGCTTCCTG  
 AAGCCCCCTGCTCTTCTGCCTCCCTCAGTTTCTAGAACCAGCCTGGACTCTCAGACTTCCCTGACTCAC  
 CTTCCAGCACACCGAGTCCAGCCAGTGTCCCGGCGCTCCATCTCCCCAGAACCAGCTCCCTGCTCTCC  
 GGTGCCCCACCCAAGCCCTCTGGGTCTCCCGAACACCTCTGCCCTCGGGCCCTACGCCTCTCCAGGAT  
 GGCTCTGCTTCGGCCCCGGCACGGTTCGTAGACTGGCCGGCAAGTTTGAATGGGAGCTGAAGGCAAAG  
 CCCAGTCTCAGACTCCCTGGAACGGTGTCCCAAGGGAGCACGGAAGTGAATGGGAGAAAGAGACTCC  
 CGAAGCCGCCCTTCTGGGAATGGGTCCCAGGAGAACGGCACTCCCGATGCTGCCCTGGCTGCCCTCCA  
 TGCTGCCCTGTGCTGCCATGTAGCAAAGCCTGGCTGGAGCTCCGGTGGGTGCCTGTGGGGAGTCTG  
 AGGACATCCTCAGGATCCCTGCCGGGCATCCCCACTCCGAGCCTCCCGCTCCCGCATCAATCCTCCAGT  
 CATCAGTACCCTCCAGTTGTGCTCACGTCTATCGTCCACTGCCGAGCGCAAACCTCTACCTCCCTC  
 AAGCCCCCAAGCCAACAAAGTCAGACAGGATATCAGCACCTCTGAGGAGCTTCCACAGCCAGATCTGA  
 AACTGCCTTCAGAAGATGGGATCCAAACTGCTACAAAGGCCTGGGAAGGGGACAGACCTGAAGGAGCTCC  
 TCTGAATGCTCCCCGTAGCCTTGGAGGGAAGGGAGGAGGAAGGATTGGATGGGCTGAAGGGGCTGCAG  
 TGGGAAGTGCCTGCAGGACGAACTTATACACAGTACCGAGCAGTGTGCTGTAGAGGAGCTGT  
 GGGGTGTGGGTGAGGATGGGGTCCCTCAGCTAATCCTGGAGAAGCTCCACCTTCTCCAGGCTCCC  
 TGGACCTCGAAACACTCTGTGGCAGGAGCTCCCGCTGTGAGAGGCAAGTGGCTCTTAGAGAGTCTAAGC  
 CCCCAGGAGCGGCGCATGCAGGAGAGCCTGTTTGGGTGGTGACATCAGAGGCCTCTACCTGCGATCCC  
 TGAGGCTGCTGACCGACACCTTCGTCTGAGCCAGGCTCTCCGGGACACACTCACGCCTCGGGATCATCA  
 TACGCTGTTCTCCAACGTGCAGCGAGTCCAGAGCGTCAGTGAAGCGGTTTCTAGGAACACTGCTGTCTCGT  
 GTTCGTTCTCCACACATCACTGACCTGTGTGATGTGGTGCATGCCCATGCAGTTGGTCTTTCTTCG  
 TGTATGTGGATTATGTTTCGGAACCAGCAGTATCAGGAGGAGACCTATAGCCGCTTATGGATACAAACGT  
 GCGCTTCTCCGAGAGCTGCGAAGGCTGCAGAGCCTCCCAAATGTGAGCGGCTCCCGCTGCCATCTTTC  
 CTGCTGCTGCCCTTCCAGCGCATCACCCGGCTGCGGATGCTGTTGCAGAATATCCTAAGCCAGACAGAAG  
 AGGGGTCCAGTCTCAGGAGAACGCCAGAAAGGCTCTGGGTGCTGTGAGCAAGATCATTGAGCGCTGCAG  
 CGCTGAGGTGGGGCGCATGAAGCAGACGGAAGAGCTGATACGGCTCACCCAAAGTTGCGCTTCCACAAA  
 GTCAAGGCTTACCCCTGGTCTCCTGGTACGGCGCTGGAATTGCAGGGGGAGCTGACCGAGCTGGGGT  
 GTCGGAGGGGGGTGTGCTCTTACCTCCCGTCCACGCTTCACTCCCCTCTGCCTACTGCTTTCAGTGA  
 CCTGCTGCTTACTACTCAGCCCAAGAGTGGGCAGCGGCTGCAGGTTCTGGACTATGCCATCGCTCCCTG  
 GTGCAGGCCCAGCAGGTTCTGACCCATCTGGACCCCTACTTTCCGCTCTCGCTTCTCAGCAACCACC  
 AGGGCCGCCCCACCCACAGGCTACTCCAAGCGGCTCACTATCAGACATGCAGCGCTGGCTGGGAGCCTT  
 CCCCACCCAGGTCCCCTTCCCTGTTCCCGAGACACCATCTATGAGGACTGTGAGTGTCCAGGAGCTA  
 TGTTCAGAGCCATCCACACCTTCCAAGACTGAGGGGCAAAGTCTGGAGTCCAAGGCCCCCGAAAGCATC  
 TGCACAAGAATCCAGAAGTTGGCTTAAGGGGTTCTGGAGCCTTCCCTGCCAACTGGTGTGTGAAGT  
 CACAGGAGAACACGAGAGGAGGAAGCATCTTCGCCAGCACAGAAAGCTCCTTGGGCTGTAGGACCTCT  
 TCAGGCACTCCTGACACCCCTCAACCT

**ACGGTACGCGGCCGCTCGAG** - GFP Tag - GTTTAA

Protein Sequence: >MG210943 representing NM\_177566  
Red=Cloning site Green=Tags(s)

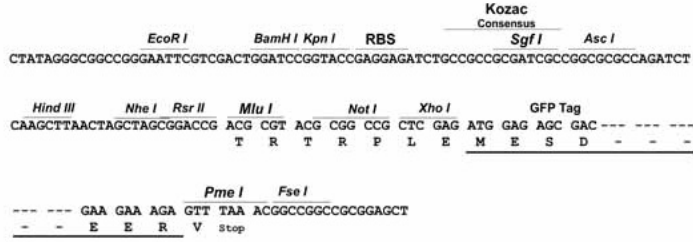
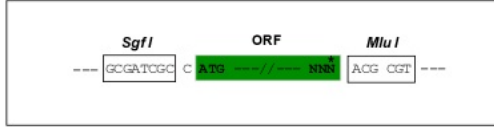
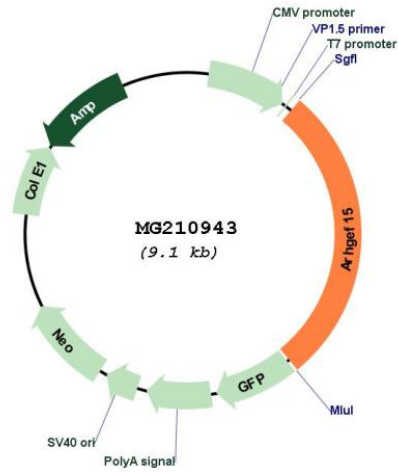
MSAQLPAATPPTLKPPRIIRPRPPSRHRAPHSPGPLHNGSSPKALPQISNDASASVCTSIFWEPPTASL  
KPPALLPPSVSRTSLDSQTSPPSPVSRRSISPEPAPCSPVPPPKPSGSSRTPLPSGPTPLQD  
GSASAPGTVRRLAGKFEWGAEGKAQSSDSLERCSTQGVNKEKETPEAALSGNGSQENGTDAALACPP  
CCPCVCHVAKPGLLRWVPVGSSEDLRIPCRASPLRASRSRINPPVISHPPVVLTSYRSTAERKLLPPL  
KPPKPTKVRQDITSEELPQPDLLPSEDEGIQTATKAWEGDRPEGAPLNAPPVALEGREEGLDGLKGLQ  
WELPLQDEPLYQTYRAAVLSEELWGVGEDGGSPANPGEAPTF SRLPGPRNTLWQELPAVRGSGLLESLS  
PQERRMQESLFEVVTSEASYLRSRLRLTDTFVLSQALRDTLTPRDHHTLFSNVQRVQSVSERFLGTLISR  
VRSSPHITDLCDVVHAHAVGPFVYVDYVRNQYQEETYSRLMDTNVRFSAELRRLQSLPKCERLPLPSF  
LLLPPQRITRLRMLLNILSQTEEGSSRQENAQKALGAVSKIIERCSAEVGRMKQTEELIRLTQRLRFHK  
VKALPLVSWSRLELQGELTELGCRGGVLFSTRPFTPLCLLLFSDLLITQPKSGQLQVLDYHRSL  
VQAQQVPDPSGPPTFRLSLLSNHQGRPTHRLQAASLSDMQRWLGAFPTPGPLPCSPDTIYEDCECSQEL  
CSEPSTPSKTEGQSLESKAPRKHLHKNPEGWLKGLPGAFPAQLVCEVTGEHERRKHLRQHQLLEAVGPS  
SGTPDTPQP

TRTRPLE - GFP Tag - V

Restriction Sites: Sgfl-MluI

**Cloning Scheme:**

Cloning sites used for ORF Shutting:

**Plasmid Map:**

<b>ACCN:</b>	NM_177566
<b>ORF Size:</b>	2547 bp
<b>OTI Disclaimer:</b>	<p>Due to the inherent nature of this plasmid, standard methods to replicate additional amounts of DNA in E. coli are highly likely to result in mutations and/or rearrangements. Therefore, OriGene does not guarantee the capability to replicate this plasmid DNA. Additional amounts of DNA can be purchased from OriGene with batch-specific, full-sequence verification at a reduced cost. Please contact our customer care team at <a href="mailto:custsupport@origene.com">custsupport@origene.com</a> or by calling 301.340.3188 option 3 for pricing and delivery.</p> <p>The molecular sequence of this clone aligns with the gene accession number as a point of reference only. However, individual transcript sequences of the same gene can differ through naturally occurring variations (e.g. polymorphisms), each with its own valid existence. This clone is substantially in agreement with the reference, but a complete review of all prevailing variants is recommended prior to use. <a href="#">More info</a></p>
<b>OTI Annotation:</b>	This clone was engineered to express the complete ORF with an expression tag. Expression varies depending on the nature of the gene.
<b>Components:</b>	The ORF clone is ion-exchange column purified and shipped in a 2D barcoded Matrix tube containing 10ug of transfection-ready, dried plasmid DNA (reconstitute with 100 ul of water).
<b>Reconstitution Method:</b>	<ol style="list-style-type: none"> <li>1. Centrifuge at 5,000xg for 5min.</li> <li>2. Carefully open the tube and add 100ul of sterile water to dissolve the DNA.</li> <li>3. Close the tube and incubate for 10 minutes at room temperature.</li> <li>4. Briefly vortex the tube and then do a quick spin (less than 5000xg) to concentrate the liquid at the bottom.</li> <li>5. Store the suspended plasmid at -20°C. The DNA is stable for at least one year from date of shipping when stored at -20°C.</li> </ol>
<b>RefSeq:</b>	<a href="#">NM_177566.4</a>
<b>RefSeq Size:</b>	4213 bp
<b>RefSeq ORF:</b>	2550 bp
<b>Locus ID:</b>	442801
<b>UniProt ID:</b>	<a href="#">Q5FWH6</a>
<b>Cytogenetics:</b>	11 B3
<b>Gene Summary:</b>	Specific GEF for RhoA activation. Does not activate RAC1 or CDC42. Regulates vascular smooth muscle contractility. Negatively regulates excitatory synapse development by suppressing the synapse-promoting activity of EPHB2.[UniProtKB/Swiss-Prot Function]