

Product datasheet for **MG210940**

FstI5 (NM_178673) Mouse Tagged ORF Clone

Product data:

Product Type:	Expression Plasmids
Product Name:	FstI5 (NM_178673) Mouse Tagged ORF Clone
Tag:	TurboGFP
Symbol:	FstI5
Synonyms:	9130207J01Rik
Mammalian Cell Selection:	Neomycin
Vector:	pCMV6-AC-GFP (PS100010)
E. coli Selection:	Ampicillin (100 ug/mL)



[View online »](#)

ORF Nucleotide Sequence:

>MG210940 representing NM_178673
 Red=Cloning site Blue=ORF Green=Tags(s)

TTTTGTAATACGACTCACTATAGGGCGGCCGGAATTCGTGACTGGATCCGGTACCGAGGAGATCTGCC
 GCC**CGGATCGCC**

ATGTTTAGGTGCTGGTCTGCCATTTTGATTCTTGATTATCTTTCTGGCATCTGAAGGGAGGCCAACAA
 AAGAATCAGGATATGGCCTTAAATCCTATCAACCTCTTACAAGATTGCGACATAAGCAGGAAAAAGTCA
 AGAAAGTTCAAGAATCAAGAATTTCTAATTCATGATGGACCATTGGATCTTGTGAAAAAAGTACTGT
 GGCTTGGGGAGGCACTGTGTTATCAACAGAGAGACAAGGCATGCGGAGTGTGCCTGCATGGACCTTTGTA
 AACAGCACTACAAACCTGTGTGGATCTGATGGGGAATCTATGAAAACCACTGTGAAGTGCACAGAGC
 TGCCTGTCTTAAAAAGCAAAAGATCACCATCGTTCACAATGAAGACTGCTTCTTTGAAGGGGACAACCTGC
 ATGGCCATTGAATACAGCAAGATGAAAAGTATGCTTTTAGACTTACAAAATCAAAAGTATATTACACAAG
 AAAATGAGAATCCCAACAGTGATGACATATCTAGGAAGAAGCCGTTGGTGGATCAAAATGTTCAAGTATTT
 TGATGCAGACAGTAATGGACTTGTAGATATTAATGAACTAACTCAGGTGATTAACAGGAGGAATGAAC
 AAGGACCTTTCTGACTGTACTTTGTATGATCTGCTCAAGTATGATGACTTCAACGCTGACAAGCACCTGG
 CTCTTGAAGAATCTACAGAGCATTTCAGGTGATCCAGTTGAGTCTGCCTGAAGATCAGAGAGTAAGCAT
 TACCGCAGCCACTGTGGGCAGAGTGTGTTCTGAGCTGTGCCATTGTGGGAACGCTGAGACCCCTATC
 ATATGGAAGAGGAACAACATTGTTCTAAATAATTTAGATTTGGAAGACATCAATGACTTTGGTGTATGATG
 GGTCCCTGTATATTACCAAGGTTACCACAGTTCACATGGGAAATTATACATGCTATGCAGATGGCTATGA
 AAATGTCCGTGAGACACACATCTCCAAGTGAATGTTCTCCAGTTATCCGAGTGTATCCAGAGAGTCAG
 GCCAGAGAACCTGGTGTAACTGCAAGCCTTAGGTGCCATGCCGAGGCCATTCCAGACCCCTCAGCTGGCT
 GGCTGAAGAATGGGATGACATTACACCGAAGCTCTCCAAACAGCTCACACTTCAAGCAAATGGCAGTGA
 GGTCCACATAAGCAATGTCCGTTATGAAGATACAGGAGCATACAGTGCATTGCTAGGAATGAAGCCGGT
 GTGGATGAAGACATCTCTCTCTTTTGTGGAAGATTCTGCTAGGAAGACACTAGCTAACATATTATGGA
 GAGAAGAAGTCTGGGAATTGGGAACATGTTCTATGTTTTTATGAAGATGGAATCAAAGTGATACAACC
 CACGGAATGTGAATTTACAGAGGCACATTAAGCCCAGTGAAGGCTCCTTGGATATCAGGATGAAGTCTGT
 CCCAAAGCAGAAGAGGATGAAGTGCAGAGATGTGTGTTGGCATCTGCTGTTAATGTCAAAGACAAGTTCA
 TTTATGTCGCTCAGCCAACCTTTGGACAGAATCTTGATTGTTGATGTGCAATCCCAAAGGTTGTTCCAGGC
 AGTGAGTACAGATCCTGTACCAGTTAAATTACACTACGACAAGTCACATGACCAAGTCTGGGTGCTGAGC
 TGGGGCAGCATGGAGAAGACATCACTCACTACAGGTGATCACTCTGGCCAGCGGGAATGTGCCACACC
 ACACCATCCACACTCAGCCAGTTGGGAAACAGTTTGACAGAGTGGACGATTTTTTTTATTCCAACCTCAAC
 ACTTATTACTCACATGAGATTTGGGTTTATTCTTATAAAGATGAATCTGCACTACAAAAATTGAT
 CTCGAAACCATGTCTACATCAAAAATTAACCTGAAGGACTCACGATGCATTCCTCTATCCTTGGCAT
 ACACCCATCTGGGAGGATACTACTTCAAGCTGCAAGGCTGACATCACCGGAGCTACTCCACCACAGCT
 CGTGGTAGACAGTGTGACTGACTCTATCATTGGCTTCAATAGCGATGTGACGGGCACTCCTTATGTCTCT
 CCAGACGGACACTATCTGTGAGTGAATGACGTGAAAGGCTTGTGACAGTCCAATATACCCATCC
 GAGGAGAGATTCTGGATGCTTTTGACATCCACCAACCTACATATATCTGACCTGGCCTCCAGCCATC
 TTTCACAGAAGCCACCAGTACAACATCTATGGCAGCTCAAGCCAACAACAGATGTACTTTTGTGGAG
 CTTTCTCTGGGAAGGTCAAGATGATCAAAAGCCTCAAAGAACCTCTCAAGACAGAAGACTGGCCCTGGA
 GCCAGAAAAACAGGCACATCCAAGGCAAGTGGCCTGTTTGGACAGTACCTGATGACACCTTCAAAGATTC
 TCTCTTATCCTGGATGGTGCCTTAATAAATTAACCTGTGAGATCACTGAGGTTGAGAAAGAAATACA
 GTTGTGGGTTGGCGATGCC

ACGCGTACGCGGCCGCTCGAG - GFP Tag - GTTTAA

Protein Sequence: >MG210940 representing NM_178673
Red=Cloning site Green=Tags(s)

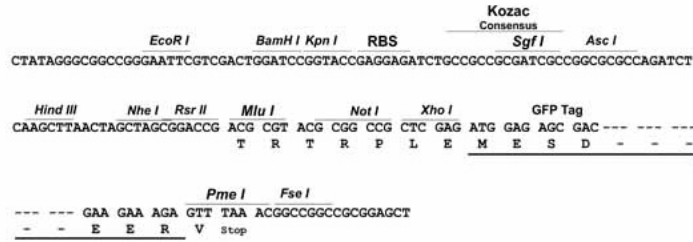
```
MFRCWSAILILGFIFLASEGRPTKESGYGLKSYQPLTRLRHKQEKSQESSRIKEFLIHDGPFSGCENKYC
GLGRHCVINRETRHAECACMDLCKQHYKPVCGSDGEFYENHCEVHRAACLKKQKITIVHNEDCFEFGDNC
MAIEYSKMKSMMLLDLQNKYITQENENPNSSDI SRKKPLVDQMFKYFDADSNGLVDINELTQVIKQEELN
KDLSDCTLYDLLKYDDFNADKHLALEEFYRAFQVIQLSLPEDQRVSITAATVGQSAVLSCAIVGTLRPPI
IWKRNIVLNNLDLEDINDFGDDGSLYITKVTTVHMGNYTCYADGYENVRQTHIFQVNVPPVIRVYVESQ
AREPGVTASLRCHAEGIPDPQLGWLKNGIDITPKLSKQLTLQANGSEVHISNVRYEDTGAYTCIARNEAG
VDEDISSLFVEDSARKTLANILWREELGIGNMFYVYEDGKVIQPTCECFQRHIKPKSEKLLGYQDEVC
PKAEDEVQRCVWASAVNVKDKFIYVAQPTLDRILIVDVQSQKVVQAVSTDPVPVKLHYDKSHDQVWVLS
WGSMEKTSPTLQVITLASGNVPHHTIHTQPVGKQFDRVDDFFIPTPTLIIITHMRFGLILHKDESALHKID
LETMSYIKTINLKDSRCIPLSLAYTHLGGYFISCKADITGATPPQLVVDVSVTDSIIGFNSDVTGTPYVS
PDGHYLVSVNDVKGLVRVQYITIRGEILDADFIDHTNLHISDLAFQPSFTEAHQYNIYGSSSQTDVLFVE
LSSGKVKMIKSLKEPLKTEDWPWSQKNRHIQGSGLFGQYLMTPSKDSLFIIDGRLNKLNCEITEVQKNGT
VVWVGDA
```

TRTRPLE - GFP Tag - V

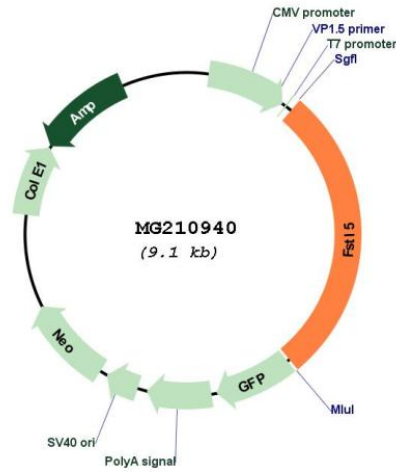
Restriction Sites: Sgfl-Mlul

Cloning Scheme:

Cloning sites used for ORF Shutting:



Plasmid Map:



ACCN:	NM_178673
ORF Size:	2541 bp
OTI Disclaimer:	The molecular sequence of this clone aligns with the gene accession number as a point of reference only. However, individual transcript sequences of the same gene can differ through naturally occurring variations (e.g. polymorphisms), each with its own valid existence. This clone is substantially in agreement with the reference, but a complete review of all prevailing variants is recommended prior to use. More info
OTI Annotation:	This clone was engineered to express the complete ORF with an expression tag. Expression varies depending on the nature of the gene.
Components:	The ORF clone is ion-exchange column purified and shipped in a 2D barcoded Matrix tube containing 10ug of transfection-ready, dried plasmid DNA (reconstitute with 100 ul of water).
Reconstitution Method:	<ol style="list-style-type: none">1. Centrifuge at 5,000xg for 5min.2. Carefully open the tube and add 100ul of sterile water to dissolve the DNA.3. Close the tube and incubate for 10 minutes at room temperature.4. Briefly vortex the tube and then do a quick spin (less than 5000xg) to concentrate the liquid at the bottom.5. Store the suspended plasmid at -20°C. The DNA is stable for at least one year from date of shipping when stored at -20°C.
RefSeq:	NM_178673.4
RefSeq Size:	4783 bp
RefSeq ORF:	2544 bp
Locus ID:	213262
UniProt ID:	Q8BFR2
Cytogenetics:	3 E3