

Product datasheet for **MG210927**

Gabbr1 (BC056990) Mouse Tagged ORF Clone

Product data:

Product Type:	Expression Plasmids
Product Name:	Gabbr1 (BC056990) Mouse Tagged ORF Clone
Tag:	TurboGFP
Symbol:	Gabbr1
Synonyms:	GABABR1, bM573K1.1
Mammalian Cell Selection:	Neomycin
Vector:	pCMV6-AC-GFP (PS100010)
E. coli Selection:	Ampicillin (100 ug/mL)



[View online »](#)

ORF Nucleotide Sequence:

>MG210927 representing BC056990
 Red=Cloning site Blue=ORF Green=Tags(s)

TTTTGTAATACGACTCACTATAGGGCGGCCGGAATTCGTCGACTGGATCCGGTACCGAGGAGATCTGCC
 GCC**CGCATCGCC**

ATGGGCCCGGGGGACCCTGTACCCCGGTGGGGTGGCCGCTGCCTCTTCTGCTGGTATGGCGGCTGGGG
 TGGCTCCGGTGTGGCCCTCACTCCCCTCATCTCCCGCGGCTCACCGAGGGTCCCCCGCACCCCTC
 CTCAGAACCGCGTGCAGTATACATCGGGCGCTGTTTCCCATGAGCGGGGGCTGGCCGGGGGCCAGGCC
 TGCCAGCCTGCGGTGGAGATGGCGCTGGAGGACGTTAACAGCCGCAGAGACATCTGCCGGACTACGAGC
 TCAAGCTTATCCACCACGACAGCAAGTGCACCCAGGGCAAGCCACCAAGTACTTGTATGAACTACTCTA
 CAACGACCCCATCAAGATCATCTCATGCCCGGCTGCAGCTCTGTGTCCACACTGGTAGCCGAGGCTGCC
 CGGATGTGGAACCTTATTGTGCTCTCATATGGCTCCAGCTCACCAGCCTTGTCAAACCGACAGCGGTTTC
 CAACGTTCTTTTCGACACATCCATCCGCCACACTCCACAATCCCACCCGGGTGAAACTCTTCGAAAAGTG
 GGGCTGGAAGAAGATTGCCACCATCCAGCAGACTACCGAGGTCTTACCTCAACTGGATGACCTGGAG
 GAGCGAGTGAAAGAGGCTGGGATTGAGATCACTTTTCGACAGAGTTTCTTCTCAGATCCAGCTGTGCTG
 TTA AAAA CCTGAAGCGTCAAGATGCTCGAATCATCGTGGGACTTTTCTATGAGACCGAAGCCCGAAAGT
 TTTTTGTGAGGTCTATAAGGAACGGCTCTTTGGGAAGAAGTATGTCTGGTTTCTCATCGGGTGGTATGCT
 GACAACTGGTTCAAAACCTATGACCCGTCAATCAATTGTACAGTAGAAGAGATGACTGAGGCGGTGGAGG
 GCCATATCACCACGGAGATTGTCATGCTGAACCCGTGCAACACCCGAAGCATTTC AACATGACATCACA
 GGAATTTGTGGAGAACTAACCAAGCGGCTGAAAAGACACCCTGAGGAGACTGGAGGCTTCCAGGAGGCA
 CCACTGGCCTATGATGCTATCTGGGCTTGGCTTTGGCCTTGAACAAGACCTCTGGAGAGGTGGCCGTT
 CAGGAGTGGCCCTGGAGGACTTTAACTACAACAACAGACCATTACAGACCAAATCTACCGGGCTGAA
 CTCTCTCTCTTTGAGGGTGTTTCTGGCCACGTGGTCTTTGATGCCAGCGGCTCCCGGATGGCATGGACG
 CTTATCGAGCAGCTACAGGGCGGAGCTACAAGAAGATCGGCTACTACGACAGCACAAGGATGATCTTT
 CCTGGTCCAAAACAGACAAGTGGATCGGAGGGTCTCCCCAGCCGACCAGACCTTGGTCAACAGACATT
 CCGTTTCTGTACAGAAACTCTTATCTCCGTCTCAGTTCTCTCCAGCCTGGGCATTGTTCTTGCTGTT
 GTCTGTCTGTCTTTAACATCTACAACCTCCACGTTTCTTATATCCAGA ACTCCCAGCCAACTGAACA
 ATCTGACTGCTGTGGGCTGCTCACTGGCACTAGCTGCTGTCTTCCCCTTGGGCTGGATGGTTACCACAT
 AGGGAGAAGCCAGTTCCTTTGCTGCCAGGCCCGCCTTTGGCTCTTGGGCTTAGGCTTAGTCTGGGC
 TATGGCTCTATGTTACCAAGATCTGGTGGTCCACACAGTCTTCAAAAGAAGGAGGAGAAGAAGAAC
 GGAGGAAGACCCTAGAGCCTTGAAACTGTACGCCACTGTAGGCCTGCTGGTGGGATGGATATCCTGAC
 TCTTGCCATCTGGCAGATTGTGGACCCCTTGACCCGAACCATTGAGACTTTTGCCAAGGAGGAACCAAAG
 GAAGACATTGATGCTCCATTCTGCCCCAGCTGGAGCACTGCAGCTCCAAGAAGATGAATACATGGCTCG
 GCATTTTCTATGGTTACAAAGGGCTGCTGCTGCTGCTGGGAATCTTTCTTGCTTATGAGACCAAAAGTGT
 GTCCACTGAAAAGATCAATGACCACAGGGCCGTGGGCATGGCTATCTACAATGTTGCGGTCTGTGTCTC
 ATTACCGCTCTGTACCATGATCTTTCCAGCCAGCAGGACGCAGCCTTCGCCTTTGCCTCTTGGCCA
 TTGTGTTCTCTTCTACATTACTCTGGTTGTGCTCTTTGTGCCTAAGATGCGCAGGTTGATCACTCGAGG
 TGAATGGCAGTCTGAAGCACAGGACACAATGAAAACAGGATCATCCACCAACAACATGAGGAAGAAGAAG
 TCCCGACTGTTGGAGAAGGAAAACCGTGAATTGAAAAGATCATCGCCGAGAAAAGAGAGCGTGTCTCTG
 AACTGCGCCATCAGCTCCAGTCTCGGCAGCAGATCCGCTCCCGGCCACCCCCAACACCCCCAGACCC
 CTCTGGGGCCTTCCAGGGGACCTCAGAGCCCCCTGACCGGCTTAGCTGTGATGGGAGTCGAGTACAT
 TTGCTTTACAAG

ACGCGTACGCGGCCGCTCGAG - GFP Tag - GTTTAA

Protein Sequence: >MG210927 representing BC056990
Red=Cloning site Green=Tags(s)

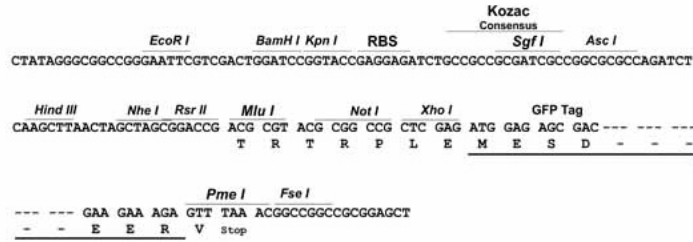
```
MGPGGPCTPVGWPLPLLLVMAAGVAPVWASHSPHLPRPHPRVPPHPSSERRAVYIGALFPMSSGGWPGGQA  
CQPAVEMALEDVNSRRDILPDYELKLIHHDSKCDPGQATKYL YELLYNDPIKIIILMPGCSSVSTLVAEAA  
RMWNLIVLSYGSSPALSNRQRFPTFFRTHPSATLHNPTRVKLFEKWGWKKIATIQQTTEVFTSTLDDLE  
ERVKEAGIEITFRQSFFSDPAVPVKNLKRQDARIIVGLFYETEARKVFCEVYKERLFGKKYVWFLIGWYA  
DNWFKTYDPSINCTVEEMTEAVEGHITTEIVMLNPANTRISINMTSQEFVEKLTKRLKRHPEETGGFQEA  
PLAYDAIWALALALNKTSGGGGRSGVRLEDFNYNNQITDQIYRAMNSSSFEGVSGHVVFASGSRMAWT  
LIEQLQGGSYKKIGYYDSTKDDL SWSKTDKWIGGSPPADQTLVIKTRFRLSQKLFISVSVLSSLGIVLAV  
VCLSFNIYNHVRVYIQNSQPNLNNLTAVGCSLALAAVFPLGLDGYHIGRSQFPFVCQARLWLLGLGFSLG  
YGSMTKIWWVHTVFTKKEEKERRKTLEPWLYATVGLLVGMDILTLAIWQIVDPLHRTIETFAKEEPK  
EDIDVSIPLPQLEHCSSKMMNTWLGIFYGYKLLLLLGI FLAYETKSVSTEKINDHRAVGMAYNVAVLCL  
ITAPVTMILSSQQDAAF AFASLAI VSSYITLVVLFVPMRRLITRGEWQSEAQDTMKTGSSTNNNEEEK  
SRLLEKENRELEKIIAEKEERVSELRHQLQSRQQIRSRRHPPTPDPSSGGLPRGPSEPPDRLSCDGSRVH  
LLYK
```

TRTRPLE - GFP Tag - V

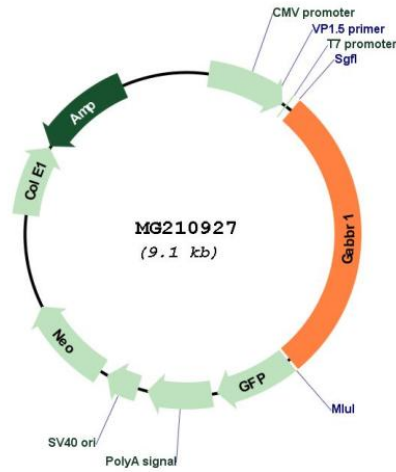
Restriction Sites: Sgfl-MluI

Cloning Scheme:

Cloning sites used for ORF Shutting:



Plasmid Map:



ACCN:	BC056990
ORF Size:	2534 bp
OTI Disclaimer:	The molecular sequence of this clone aligns with the gene accession number as a point of reference only. However, individual transcript sequences of the same gene can differ through naturally occurring variations (e.g. polymorphisms), each with its own valid existence. This clone is substantially in agreement with the reference, but a complete review of all prevailing variants is recommended prior to use. More info
OTI Annotation:	This clone was engineered to express the complete ORF with an expression tag. Expression varies depending on the nature of the gene.
Components:	The ORF clone is ion-exchange column purified and shipped in a 2D barcoded Matrix tube containing 10ug of transfection-ready, dried plasmid DNA (reconstitute with 100 ul of water).
Reconstitution Method:	<ol style="list-style-type: none">1. Centrifuge at 5,000xg for 5min.2. Carefully open the tube and add 100ul of sterile water to dissolve the DNA.3. Close the tube and incubate for 10 minutes at room temperature.4. Briefly vortex the tube and then do a quick spin (less than 5000xg) to concentrate the liquid at the bottom.5. Store the suspended plasmid at -20°C. The DNA is stable for at least one year from date of shipping when stored at -20°C.
RefSeq:	BC056990 , AAH56990
RefSeq Size:	3883 bp
RefSeq ORF:	2534 bp
Locus ID:	54393
Cytogenetics:	17 19.16 cM
Gene Summary:	Component of a heterodimeric G-protein coupled receptor for GABA, formed by GABBR1 and GABBR2 (PubMed:10773016, PubMed:10075644). Within the heterodimeric GABA receptor, only GABBR1 seems to bind agonists, while GABBR2 mediates coupling to G proteins (By similarity). Ligand binding causes a conformation change that triggers signaling via guanine nucleotide-binding proteins (G proteins) and modulates the activity of down-stream effectors, such as adenylate cyclase (PubMed:10773016, PubMed:10075644). Signaling inhibits adenylate cyclase, stimulates phospholipase A2, activates potassium channels, inactivates voltage-dependent calcium-channels and modulates inositol phospholipid hydrolysis (PubMed:10075644). Calcium is required for high affinity binding to GABA (By similarity). Plays a critical role in the fine-tuning of inhibitory synaptic transmission (By similarity). Pre-synaptic GABA receptor inhibits neurotransmitter release by down-regulating high-voltage activated calcium channels, whereas postsynaptic GABA receptor decreases neuronal excitability by activating a prominent inwardly rectifying potassium (Kir) conductance that underlies the late inhibitory postsynaptic potentials (PubMed:10075644). Not only implicated in synaptic inhibition but also in hippocampal long-term potentiation, slow wave sleep, muscle relaxation and antinociception (By similarity).[UniProtKB/Swiss-Prot Function]