

Product datasheet for **MG210924**

Abcb6 (NM_023732) Mouse Tagged ORF Clone

Product data:

Product Type:	Expression Plasmids
Product Name:	Abcb6 (NM_023732) Mouse Tagged ORF Clone
Tag:	TurboGFP
Symbol:	Abcb6
Synonyms:	1200005B17Rik
Mammalian Cell Selection:	Neomycin
Vector:	pCMV6-AC-GFP (PS100010)
E. coli Selection:	Ampicillin (100 ug/mL)



[View online »](#)

ORF Nucleotide Sequence:

>MG210924 representing NM_023732
 Red=Cloning site Blue=ORF Green=Tags(s)

TTTTGTAATACGACTCACTATAGGGCGGCCGGGAATTCGTCGACTGGATCCGGTACCGAGGAGATCTGCC
 GCC**CGGATCGCC**

ATGGTGACTGTGGCACTACTGCGAGACCGAAGGGCCGGGGCCGCTTGGACTCAGAATGGCTTGA
 GTCCCTGCTTCTTTCACGCTAGTGCCCTCGACTCCTGACTCTGGGGTACTGGCCTTGGTGCCTGGT
 TCTTCCCGCAGGCGTCGGGAGGTGCTGCTGGCCAGAAGAGCTGTCTTGGCGGCTGGCCCTCGGGT
 GCCCATATGTGCTGCAGCTGTTTCTGGCCACTTCAGATGGACTGCCCTGGCTGGTCTGGCTGGCC
 GAGTGGGACTGCTCGGGGGTCCGCTGTCAGGCTACCTACTGCTGGCTTCTGTGCTGGAGAGTCTGGC
 CAGCGTCTGTGGCTTGTGGCTGCTGCTGGTGAACGGAGCCAGGCAGGCAGAGTCTGGCAATGGCGTC
 TGGATGAAGTTCAGGCATAGCTTGGGTCTCTGCTCTGACTGTGACATTTGCAGCCGAGAACTTGG
 CCCTAGTATCTTGAACAGCCCGCAGTGGTGGTGGCCAGAGCAGATCTGGCCAGCAGGTTCAATTTGG
 CCTGTGGTCTCGCTTATGTGACTCTGGAGGCTATTTATCTTGGGGCTCTGGCCCCAGGACTTCGC
 CCCAGTCTTACTCTACACGTTTCATGAAGAAGACCAAGATGTAGGAGGGAACAGGGCCGCTCAACAG
 ACCGACGATCCACTGGAGAGACCTTGGCCGAAGCTTCGACTGCTGAGTAGTACTTGTGGCCTCGGGG
 AAGTCCATCACTACAGCTGATAGTGTCTCATATGCCTGGGACTCATGGGTTGGAACGAGCACTCAATGTG
 TTGGTCCCATCTTCTATAGGGACATTGTGAACCTACTGACTGCGAAGGCTCCTTGGAGCTCCCTGGCCT
 GGACCGTTACCACCTATGTCTTCTCAAGTTCCTCCAGGGGGTGGCACTGGCAGTACAGGTTTTGTGAG
 CAACCTGCGAACCTTCTATGGATCCGGTGCAGCAGTTACGTCAGGAGGTGTGGAGTACGCTCTTTC
 TCTCACCTGCATGAACCTCACTGCGCTGGCACCTGGCCGGCGTACCGGGGAGGTGCTTCGGATCGTGG
 ACCGGGAACATCTAGTGTACAGGACTACTCAGCTACCTGGTGTTCAGCATCATCCCCACCTCGTGGCA
 CATCATATTGGCATCATCTACTTCAGCATGTTCTTCAATGCCTGGTTTGGCCTCATCGTGTTCCTGTGC
 ATGAGTCTTTACCTCATCTGACTATCGTGGTACCGAGTGGAGAGCCAAGTTTCGCCGTGATATGAACA
 CACAGGAAAACGCCACCGGGCAGCAGCAGTAGACTCTCTGCTCAACTTTGAAACGGTGAATACTATGG
 TGCCGAGGGTTATGAAGTAGACCCTATCGAGAGGCCATCCTCAAGTTTCAGGGTTTGGAGTGAAGTCA
 ACCGCCTCACTGGTTGTGCTGAATCAGACACAGAACCTGGTGTATCGGGCTTGGCCTCCTTGTGCTCCT
 TGCTTTGCGCATACTTCGTCAGTGAAGCAGAAAGCTACAGGTTGGGACTTTGTGCTTTTGGCACTTACAT
 CACCCAAGTGTACATGCCTCTCAACTGGTTTGGCACCTACTACAGGATGATCCAGACTAAGTTCATTGAC
 ATGGAGAACATGTTTACTTGTGAAAGAGGAGACAGAAGTGAAGGATGTTCTTGGTGCAGGGCCCTTC
 GTTTTCATAAGGGCCGGATTGAGTTTGAATGTGCACTTCAGCTACGCTGATGGCAGGAGACCTTACA
 AGATGTGCTCTCACTGTGATGCCTGGACAGACGGTGGCTCTGGTAGGTCCATCTGGGGCAGGAAAGAGC
 ACAATTTTGGCCTGCTATTTCCGTTCTATGACATCAGCTCTGGCTGCATCCGAATAGATGGACAGGATA
 TTTACAGGTGACCCAGATCTCTCTCCGATCTCACATTGGAGTTGTGCCCCAGGACACTGCTCTTCAA
 CGACACCATTTGTAACAATATCCGCTATGGCCGTGTCACAGCTGGGGACAGTGAGGTAGAGGCTGCTGCT
 CAGGCTGCAGGCATTATGATGCCATCTGTCTTCCCTGAAGGGTATGAGACACAGGTCCGGGAGCGGG
 GTCTGAAGCTGAGTGGTGGCGAGAAGCAGCGAGTGGCCATCGCCCGACCATCCTTAAGGCTCCTGACAT
 CATTCTGCTGGATGAGGCCACATCAGCACTGGATACATCTAATGAGAGAGCCATCCAGGCCCTCTGGCC
 AAAGTCTGCACCAACCGCACCATCGTCATAGCACACAGGCTCTCAACTGTGGTCAATGCTGACCAGA
 TTCTGGTCAAGGACGGTTCATCATAGAGAGGAAGGCACGAAGCCTGCTGTCCCGAGGTGGCGT
 TTATGCCGAGATGTGGCAGCTGCAGCAGCAAGGACAAGAACTGTCCCTGAAGAATCTAAACCTCAGGAC
 ACGGCA

ACGGTACGGCCGCTCGAG - GFP Tag - GTTAA

Protein Sequence: >MG210924 representing NM_023732
Red=Cloning site Green=Tags(s)

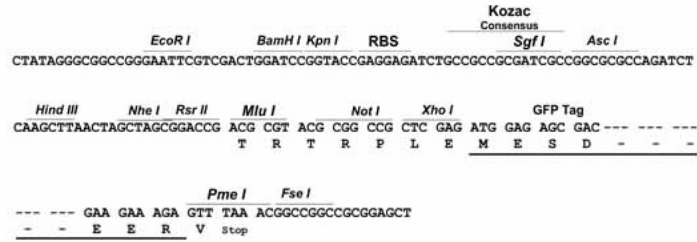
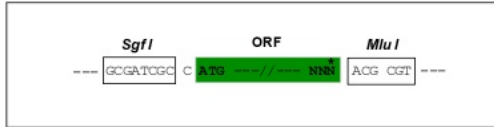
MVTVGNYCETEGPAGPAWTQNGLSPCFFFTLVPSTLLTLGVLALVLPVRRRREVPAGPEELSWAAGPRV
APYVLQLFLATLQMALPLAGLAGRVGTARGVRLPGYLLLASVLESLASVCGLWLLVVERSQARQSLAMGV
WMKFRHSLGLLLLWTVTFAAENLALVSWNSPQWWWARADLGQQVQFGLWVLRVYVTSGLFILGLWAPGLR
PQSYTLHVHEEDQDVGGNQGRSTDRRSTWRDLGRKLRLLSSYLWPRGSPSLQLIVLICGLMGLERALNV
LVPIFYRDIVNLLTAKAPWSSLAWTVTTYVFLKFLQGGGTGSTGFVSNLRTFLWIRVQQFTSRGVLELRF
SHLHELRLRWHLGRRTGEVLRIVDRGTSSVTGLLSYLVFSIIPTLADIIIGIIFYSMFFNAWFGLIVFLC
MSLYLILTIIVTEWRRAKFRDMNTQENATRARAVIDSLLNFETVKYYGAEGYEVDRYREAILKFGLEWKS
TASLVVLNQTQNLVIGLGLLAGSLLCAYFVSEKLVQVDFVLFVGTYYITQLYMLNWFVGTYYRMIQTNFID
MENMFDLLKEETEVDKDPGAGPLRFHKGRIEFENVHFSYADGQETLQDVSFTVMPGQTVLVGPGSAGKS
TILRLLFRFYDISSGCIRIDGQDISQVTQISLRSHIGVVPQDTVLFNDTIANNIRYGRVTVAGDSEVEAAA
QAAGIHDAILSFPEGYETQVGERGLKLSGGEKQRVAIARTILKAPDIILLDEATSALDTSNERAIQASLA
KVCTNRTTIVIAHRLSTVVNADQILVIKDGCIIERGRHEALLSRGGVYAEMWQLQQQGQETVPEESKPQD
TA

TRTRPLE - GFP Tag - V

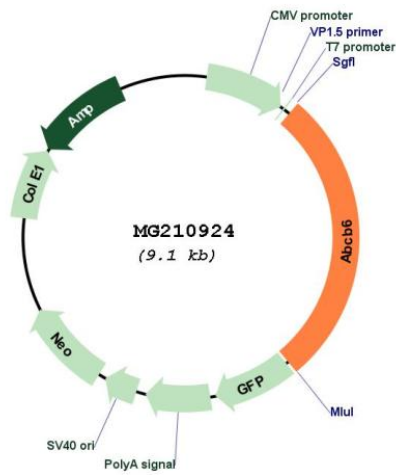
Restriction Sites: Sgfl-MluI

Cloning Scheme:

Cloning sites used for ORF Shutting:



Plasmid Map:



ACCN:	NM_023732
ORF Size:	2526 bp
OTI Disclaimer:	The molecular sequence of this clone aligns with the gene accession number as a point of reference only. However, individual transcript sequences of the same gene can differ through naturally occurring variations (e.g. polymorphisms), each with its own valid existence. This clone is substantially in agreement with the reference, but a complete review of all prevailing variants is recommended prior to use. More info
OTI Annotation:	This clone was engineered to express the complete ORF with an expression tag. Expression varies depending on the nature of the gene.
Components:	The ORF clone is ion-exchange column purified and shipped in a 2D barcoded Matrix tube containing 10ug of transfection-ready, dried plasmid DNA (reconstitute with 100 ul of water).
Reconstitution Method:	<ol style="list-style-type: none">1. Centrifuge at 5,000xg for 5min.2. Carefully open the tube and add 100ul of sterile water to dissolve the DNA.3. Close the tube and incubate for 10 minutes at room temperature.4. Briefly vortex the tube and then do a quick spin (less than 5000xg) to concentrate the liquid at the bottom.5. Store the suspended plasmid at -20°C. The DNA is stable for at least one year from date of shipping when stored at -20°C.
RefSeq:	NM_023732.3
RefSeq Size:	2946 bp
RefSeq ORF:	2529 bp
Locus ID:	74104
UniProt ID:	Q9DC29
Cytogenetics:	1 C4
Gene Summary:	Binds heme and porphyrins and functions in their ATP-dependent uptake into the mitochondria. Plays a crucial role in heme synthesis.[UniProtKB/Swiss-Prot Function]