

## Product datasheet for **MG210921**

### Prom1 (BC028286) Mouse Tagged ORF Clone

#### Product data:

Product Type:	Expression Plasmids
Product Name:	Prom1 (BC028286) Mouse Tagged ORF Clone
Tag:	TurboGFP
Symbol:	Prom1
Synonyms:	Prom, AC133, CD133, Proml1
Mammalian Cell Selection:	Neomycin
Vector:	pCMV6-AC-GFP (PS100010)
E. coli Selection:	Ampicillin (100 ug/mL)



[View online »](#)

**ORF Nucleotide Sequence:**

>MG210921 representing BC028286  
 Red=Cloning site Blue=ORF Green=Tags(s)

TTTTGTAATACGACTCACTATAGGGCGGCCGGGAATTCGTCGACTGGATCCGGTACCGAGGAGATCTGCC  
 GCC**CGGATCGCC**

ATGGCTCTCGTCTTCAGTGCCCTGCTGTTACTGGGGCTGTGTGGAAGATCTCTTCAAGAGTCAGCCTG  
 CATTCCATAACACTCCTGGGGCTATGAATTATGAATTGCCTACCACCAAATATGAGACCCAAGATACCTT  
 CAATGCTGGGATTGTTGGCCCTCTCTACAAAATGGTGCACATCTTCTCAACGTGGTCCAGCCGAATGAC  
 TTCCCTCTAGATTTGATCAAAAACTCATACAGAACAAGAAGCTTTGACATCTCAGTTGATTTCCAAGGAGC  
 CAGAAATCATAGTCTTGGCTCTGAAGATTGCCCTCTATGAGATCGGAGTCCTTATCTGCGCCATCTGGG  
 ACTGCTGTTTATTATCCTCATGCCTCTGGTGGGCTGCTTCTTTTGTATGTGCCGTTGCTGCAACAAATGC  
 GGCGGAGAGATGCACCAGCGGCAGAAGCAGAATGCGCCATGCAGGAGGAAGTGTGGGCCCTCTCCCTCC  
 TGGTGATTTGTCTGCTCATGAGCCTTGGCATTATATATGGCTTTGTGGCTAACCCAGCAGACCAGGACTCG  
 GATCAAAGGGACCCAGAACTGGCAAAGAGCAATTTAGAGACTTCAAACACTCCTGACTGAAACACCA  
 AAGCAAATGACTATGTAGTGGAGCAGTACACCAACACCAAGAACAAGGCATTCTCAGACCTGGATGGCA  
 TCGGCTCCGTGCTGGGAGGCAGAATAAAGGACCAACTAAAACCCAAAGTAACTCCTGTCCTCGAAGAGAT  
 TAAGGCCATGGCGACAGCCATCAAACAGACCAAGGATGCCCTGCAGAACATGAGCAGCAGCCTGAAAAGT  
 CTCCAAGATGCAGCCACCCAGCTCAATACCAACCTGAGCTCTGTGAGAAACAGCATCGAGAATTCGCTCA  
 GCAGCAGTGACTGACCTCAGATCCAGCCAGCAAGATCTGCGATAGCATCAGACCAAGCCTAAGCAGTCT  
 GGGGAGCAGCCTCAATCAAGTCAGCTCCCATCAGTGGATAGAGAAGTCAACACTGTTACTGAAGTCGAC  
 AAACTGATCTGGAGAGCCTCGTCAAAGGGGGTATACGACAATTGATGAAATACCAATACAATACAAA  
 ACCAAACTGTGGATGTCATCAAAGAGCTCAAATAACCTTGACTCCATTAGCTCCAACATTAAGGACAT  
 GAGCCAAAGTATTCCTATTGAGGATATGCTGTTACAGGTCTCCCATTAATAACAGCAACAGATAC  
 TTAACCAGGAGCTGCCAAGCTGGAAGAATATGACTCGTACTGGTGGCTGGGTGGCTTGATTGTCTGCT  
 TTCTGCTGACTCTCATTGTGACCTTCTTTTTCTGGGCTTGCTGTGTGGTGTGTTGGCTATGACAAGCA  
 TGCCACCCCAACTAGAAGAGGCTGTGTGCCAACACTGGAGGCATCTTCTCATGGCTGGGGTTGGATTC  
 GGCTTCTTTTTGCTGGATATTGATGATCCTTGTGGTCTTACGTTTGTGTTGGTGAATGTGGAAA  
 AGTTGCTCTGCGAACCTTATGAAAACAAGAAATTATTACAGGTTTTGGACTCCCTATCTGCTCAAGGA  
 ACAATGGCAATTTATCTTTCTGGCATGCTATTCAATAACCCAGACATTAACATGACCTTTGAGCAAGTC  
 TACAGGGATTGAAAAGAGGTGAGGTATATATGCTGCTTTTCAGCTTGAGAATGTCGTCACAGTCAGTG  
 ATCATTCAACATTGACCAGATTTCTGAAAACATAAATACGGAGTTGAAAACCTGAATGTGAACATTGA  
 TAGCATTGAAGTGTGGATAAACACAGGAAGGAAGGCCTCGAGGACTTTGCACATTCTGGGATAGATACA  
 ATCGATTATCCACATACTTGAAGGAGACTGAGAAATCCCCTACTGAAGTGAATCTGCTGACATTTGCCCT  
 CTACCCTGGAAGCAAAGCAAACAGTTGCCTGAAGGAAAGCTGAAACAGGCCTTCTTACTGGATGTACA  
 GAATATAAGAGCCATCCACCAGCATCTCCTCCCTCCTGTGCAGCAATCACTGAAATTTGTGAGGGTGAGG  
 AATACGTTAAGACAAAGTGTCTGGACCCCTCAGCAAACAAGCAACAAGTTGCCGGAGAAAGTGAAGAAGA  
 TCCTTGCCCTTTTGGACTCTGTTTCAGCATTTCCTACCAATAACGTTTCCCTCATCGTTATCGGGGAAAC  
 GAAGAAGTTTGGAAAACAATACTAGGCTACTTTGAACATTATCTGCACCTGGGTCTTTTATGCCATCACA  
 GAGAAGATGACATCCTGCAAACCCATGGCCACCGCATGGACTCTGCTGTTAATGGCAATCTGTGTGGCT  
 ATGTTGCGGACCCCTGAATTTGTTCTGGTTCGCGATAGGGAAAGCCACGGTGCTTACTTCCGGCTGT  
 AATCATTGCTATCAAGCTGGCCAAGTACTATCGCAGGATGGATTAGAGGATGTATACGACGACCCGCTCT  
 CGATAC

**ACGCGT**ACGCGGCCGCTCGAG - GFP Tag - GTTTAA

**Protein Sequence:** >MG210921 representing BC028286  
Red=Cloning site Green=Tags(s)

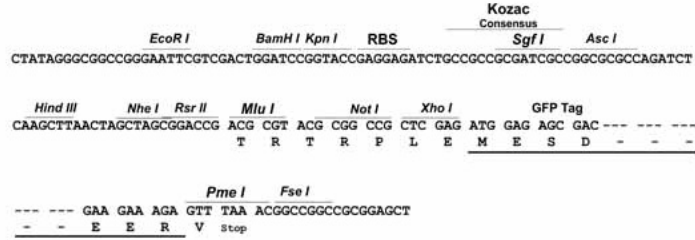
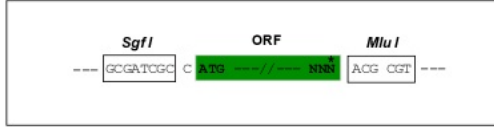
MALVFSALLLLGLCGKISSEGGPAPFHNTPGAMNYELPTTKYETQDTFNAGIVGPLYKMHIFLNVVQPNDFPLDLIKKLIQKNFDISVDSKEPEIIVLALKIALYEIGVLICAILGLLFIILMPLVGCFFCMCRCCNKGEMHQKQKQNAFCRRKCLGLSLLVICLLMSLGIYGFVANQQTRTRIKGTQKLAKSNFRDFQTLLETQKQIDYVVEQYNTNKNKAFSDLGIGSVLGGRIKQKPKVTPVLEEIKAMATAIKQTKDALQNMSSSLKSLQDAATQLNTNLSSVRNSIENLSSSDCTSDPASKICDSIRPSLSSLGSSLNSSLQPSVDRELNTVTEVDKTDLESLVKRGYTTIDEIPNTIQNQTVQVVDVVDKNTLDSISSNIKDMSSQSIPIEDMLLQVSHYLNNSNRYLNQELPKLEEYDSYWLLGGLIVCFLLTLIVTFFFLGLLCGVFGYDKHATPTRRGCVSNTGGIFLMAGVGFGLFCWILMILVVLTFVVGANVEKLLCEPYENKLLQVLDTPYLLKEQWQFYLSGMLFNNPDINMTFEQVYRDCKRGRGIYAAFQLENVNVSDHFNIDQISENINTELENLNVNIDSIELLDNTGRKSLEDFAHSGIDTIDYSTYLKETEKSPTEVNLLTFASTLEAKANQLPEGKLLQAFLLDVQNIQAIHQHLLPPVQSLKFRVVRNTRLRQSVWTLQQTSNKLPEKVKKILASLDSVQHFLTNNVSLIVIGETKKFGKTIILGYFEHYLHWVFYAITEKMTSCKPMATAMDSAVNGILCGYVADPLNLFWFGIGKATVLLLPAVIIAIAIKLAKYRRMDSQEDVYDDPSRY

TRTRPLE - GFP Tag - V

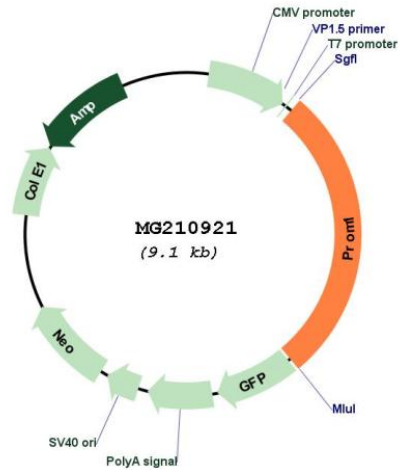
**Restriction Sites:** Sgfl-MluI

Cloning Scheme:

Cloning sites used for ORF Shutting:



Plasmid Map:



<b>ACCN:</b>	BC028286
<b>ORF Size:</b>	2528 bp
<b>OTI Disclaimer:</b>	The molecular sequence of this clone aligns with the gene accession number as a point of reference only. However, individual transcript sequences of the same gene can differ through naturally occurring variations (e.g. polymorphisms), each with its own valid existence. This clone is substantially in agreement with the reference, but a complete review of all prevailing variants is recommended prior to use. <a href="#">More info</a>
<b>OTI Annotation:</b>	This clone was engineered to express the complete ORF with an expression tag. Expression varies depending on the nature of the gene.
<b>Components:</b>	The ORF clone is ion-exchange column purified and shipped in a 2D barcoded Matrix tube containing 10ug of transfection-ready, dried plasmid DNA (reconstitute with 100 ul of water).
<b>Reconstitution Method:</b>	<ol style="list-style-type: none"><li>1. Centrifuge at 5,000xg for 5min.</li><li>2. Carefully open the tube and add 100ul of sterile water to dissolve the DNA.</li><li>3. Close the tube and incubate for 10 minutes at room temperature.</li><li>4. Briefly vortex the tube and then do a quick spin (less than 5000xg) to concentrate the liquid at the bottom.</li><li>5. Store the suspended plasmid at -20°C. The DNA is stable for at least one year from date of shipping when stored at -20°C.</li></ol>
<b>RefSeq:</b>	<a href="#">BC028286</a> , <a href="#">AAH28286</a>
<b>RefSeq Size:</b>	3701 bp
<b>RefSeq ORF:</b>	2528 bp
<b>Locus ID:</b>	19126
<b>Cytogenetics:</b>	5 B3
<b>Gene Summary:</b>	May play a role in cell differentiation, proliferation and apoptosis. Binds cholesterol in cholesterol-containing plasma membrane microdomains and may play a role in the organization of the apical plasma membrane in epithelial cells. During early retinal development acts as a key regulator of disk morphogenesis (PubMed:19228982). Involved in regulation of MAPK and Akt signaling pathways. In neuroblastoma cells suppresses cell differentiation such as neurite outgrowth in a RET-dependent manner.[UniProtKB/Swiss-Prot Function]