

## Product datasheet for **MG210882**

### Jade1 (NM\_172303) Mouse Tagged ORF Clone

#### Product data:

Product Type:	Expression Plasmids
Product Name:	Jade1 (NM_172303) Mouse Tagged ORF Clone
Tag:	TurboGFP
Symbol:	Jade1
Synonyms:	AU041499; D530048A03Rik; mKIAA1807; Phf17
Mammalian Cell Selection:	Neomycin
Vector:	pCMV6-AC-GFP (PS100010)
E. coli Selection:	Ampicillin (100 ug/mL)



[View online »](#)

**ORF Nucleotide Sequence:**

>MG210882 representing NM\_172303  
 Red=Cloning site Blue=ORF Green=Tags(s)

TTTTGTAATACGACTCACTATAGGGCGGCCGGAATTCGTCGACTGGATCCGGTACCGAGGAGATCTGCC  
 GCC**CGCATCGCC**

ATGAAACGAGGTGCCTTCCCAGCAGCAGTGAGGATTCTGACGACAATGGCAGCTTGTCAACGACATGGT  
 CCCAGCATTCTCGATCCCAGCATGGGAGGAGTAGTACCTGCTCTAGACCTGAAGATCGAAAAGCCTTCTGA  
 GGTGTTTAGGACCGACCTGATCACTGCCATGAAGTTGCATGACTCCTACCAGCTGAACCCGGATGACTAC  
 TACGTGCTGGCTGATCCCTGGAGACAGGAGTGGGAGAAAGGGTCCAGGTGCCTGTGAGCCAGGGACCA  
 TCCCACAGCCTGTGGCCAGGTTGTGTCTGAAGAGAAGTCTCTCATGTTTCATCAGGCCAAAGAAGTACAT  
 CGCGTCGTCGGCTCTGAGCCCCAGCGTTAGGCTACGTCGATATCCGGACTCTGGCAGACAGTGTGTGT  
 CGGTATGACCTCAATGATATGGATGCTGCGTGGCTGGAAGTAACCAATGAAGAATTTAAGGAGATGGGA  
 TGCCGGAGCTGGACGAGTACCCATGAAAAGGGTCTTGGAGGAATTCGAACAGCGATGCTATGACAATAT  
 GAATCATGCCATAGAGACAGAAGAGGGCTTGGGGATTGAATACGACGAAGACGTTGTCTGCGATGTCTGC  
 CAGTCACCTGATGGCAGGACGGCAACGAGATGGTGTCTGTGACAAGTGAACATCTGTGTGCACCAGG  
 CTTGCTATGGGATCCTCAAGGTGCCAGAGGGCAGTTGGCTATGTGCTACATGTGCCCTGGGAGTTACGCC  
 AAAATGTTTGTGTGTGCCAAGAAAGGCGGAGCTATGAAGCCGACCCGCAGCGGAACCAAGTGGTCCAC  
 GTCAGCTGTGCCCTGTGGATCCCTGAGGTAAGCATTGGCAGCCCTGAGAAGATGGAGCCCATCACAAAAG  
 TGTCTCACATCCCAGCAGCCGGTGGCGCTTGTGTGACGCTCTGCAATGAGAAATTCGGGGCCTCCAT  
 ACAGTGTCTGTGAAGAACTGCCGGACAGCCTTCCACGTGACTTGTGCTTTTGACCGTGGCTGGAGATG  
 AAGACCATATTGGCAGAGAATGATGAAGTCAAATTCAGTCTACTGCCAAAGCACAGCTCACACAGAA  
 AACCCGAGGAGGGCCTGGGTGAAGGAGCAGCCAGGAGAATGGGGCCCTGAGAGTTCTCCCCAGAGCC  
 TCTGGAGCCCTATGGTAGTCTGGAGCCGAATCGAGAGGAGGCCACCCGGTGAGTGTTCGCAAGCAGAAG  
 CTACAGCAGCTGGAGGATGAGTTCTACACCTTTGTCAACCTGCTGGATGTGGCCAGGGCGCTGCGGCTGC  
 CTGAGGAAGTGGTGGATTTCTGTACCAGTACTGGAAGTTGAAGAGGAAGATCAACTTCAACAAGCCCT  
 CATCACCCCAAAGAAAGACGAAGAGGACAATCTAGCCAAGCGGGAGCAGGATGTCTTGTAGGAGGCTG  
 CAGCTGTTACGCACCTGCGGCAGGACCTGGAGAGGGTTCGGAACCTCACTTACATGGTGACCCGCAGGG  
 AAAAGATTAACCGGTCTGTGTGCAAAGTCCAGGAACAAATTTTCACTCAGTACACTAAGCTCTTGGAGCA  
 AGAAAAAGTTTCAGGTGTGCCTTCTTCTGCTCCTCCGCACTGGAGAACATGCTTTTTTTCAACAGTCTCT  
 TCTGTGGGCCCAATGCTCCCAAGATAGAGGACTTGAATGGCATTCTGCATTCTCAGGAAACAAATGG  
 GCACTTCCCTTGGTTCATCCACTGAAAAAGTCCCATAAACGAGATGCAAGTGCAGAAATAGTTCTGGGACCGA  
 GGGCAAGACCTCGCATAAGCAGCCAGGTCTTTGTGGTAGAAGGGAGGGGCTGGAGGTCTCAGAAAGCTTG  
 CTGAGCTTAGAAAAGACTTTTGCAGAAGCACGTCTCCTATCATCAGCACAAACAGAAAAATGGTGTGGTGA  
 CCCCAGACCATGGGAAAAGAAGAGACAATCGTTTTTCATTGTGATCTCGTTAAAGGAGACTTAAAGGACAA  
 ATCTTTTAAGCAGAGTCAAAAGCCTCTCAGGTCCACAGACACATCCCAGAGGCATCTGGACAACACAAGA  
 GCTGCCACCTCCCTGGAGTAGGGCAGTCAGCACCTGGCACCAGGAAGGAGATTGTGCCAAAGTGAATG  
 GCTCCCTAGTCAAAGTGCCTATAACACCTGCCAGCCCAGTGAAAAGCTGGGGAGGATTCCGGATTCCAAA  
 GAAGGGGAGCGGCAGCAGCAAGGAGAAGCCCATGATGGGGCTGCCACCAGCACTCAGACTGCTCCCAT  
 CTGGGTGTAAGCCGAGCTCCAGCCAAGGAGAGAGCGAAGAGCAGGTTAAGAGCTGACAGTGAGAATGATG  
 GGTACGCCCTGATGGGAAATGAGTGACTCAGAGAGCGAGGCATCAGAGAAGAAATGTATCCATGCCAG  
 CAGCACCATCAGCAGGAGGACAGATATCATCAGGCGAAGCATCTTGGCCTCT

**ACCGTACGCGGCCGCTCGAG** - GFP Tag - GTTTAA

**Protein Sequence:** >MG210882 representing NM\_172303  
Red=Cloning site Green=Tags(s)

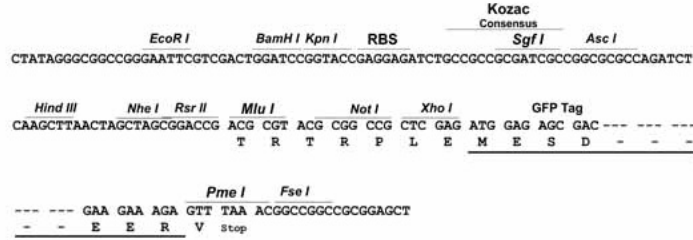
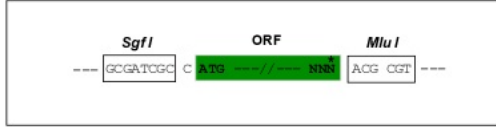
MKRGRLPSSSEDSDDNGSLSTTWSQHSRSQHGRSSTCSRPEDRKPSEVFRTDLITAMKLHDSYQLNPDDY  
YVLADPWRQEWKGVQVPVSPGTIPQPVARVVSEEKSLMFIKPKYIASSGSEPPALGYVDIRTLADSV  
RYDLNDMDAAWLEVTNEEFKEMGPELDEYTMERVL EEFQRCYDNMNHAIETEEGLGIEYDEDVCDVC  
QSPDGEDGNEMVFCDKCNICVHQACYGILKVPEGSWLCRTCALGVQPKLLCPKKGAMKPTRSGTKWVH  
VSCALWIPEVSIKSPKMEPITKVSHPSSRWALVCSLCNEKFGASIQCSVKNCRTAFHVTCADFDRGLEM  
KTI LAENDEVKFKSYCPKHSSHRKPEEGLGEGAAQENGAPESSPQSPLEPYGSLEPNREEAHRVSVRKQK  
LQQLEDEFYTFVNLLDVARALRLEEVVDFLYQYWKLKRKINFNKPLITPKKDEEDNLAKREQDVLFRRL  
QLFTHLRQDLERVRNLTYMVTREKIKRSVCKVQEQIFTQYTKLLEQEKVSGVPSSCSALENMLFFNSP  
SVGNAPKIEDLKWHSAFFRKQMGTSLVHPLKSHKRDAVQNSSGTEGKTSHKQPLRSTDTQRHLDNTR  
LSLEKTFAEARLLSSAQKNGVVTPDHGKRRDNRFHCDLVKGDLDKSKFKQSHKPLRSTDTQRHLDNTR  
AATSPGVGQSAPGTRKEIVPKCNGSLVKVPITPASPVKSWGFRIPKKGERRQQQGEAHDGACHQHSDCSH  
LGVSRAPAKERAKSRLRADSENDGYAPDGEMSDSESEASEKCCI HASSTISRRTDIIRRSILAS

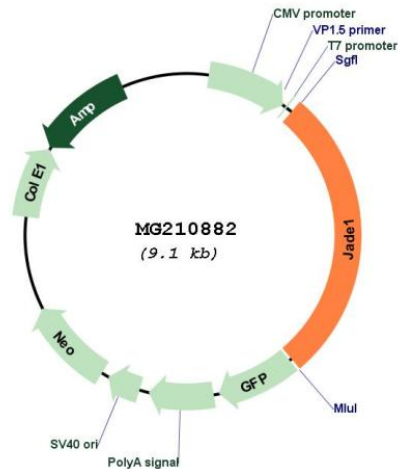
TRTRPLE - GFP Tag - V

**Restriction Sites:** Sgfl-MluI

Cloning Scheme:

Cloning sites used for ORF Shutting:



**Plasmid Map:**


**ACCN:** NM\_172303

**ORF Size:** 5581 bp

**OTI Disclaimer:** Due to the inherent nature of this plasmid, standard methods to replicate additional amounts of DNA in *E. coli* are highly likely to result in mutations and/or rearrangements. Therefore, OriGene does not guarantee the capability to replicate this plasmid DNA. Additional amounts of DNA can be purchased from OriGene with batch-specific, full-sequence verification at a reduced cost. Please contact our customer care team at [custsupport@origene.com](mailto:custsupport@origene.com) or by calling 301.340.3188 option 3 for pricing and delivery.

The molecular sequence of this clone aligns with the gene accession number as a point of reference only. However, individual transcript sequences of the same gene can differ through naturally occurring variations (e.g. polymorphisms), each with its own valid existence. This clone is substantially in agreement with the reference, but a complete review of all prevailing variants is recommended prior to use. [More info](#)

**OTI Annotation:** This clone was engineered to express the complete ORF with an expression tag. Expression varies depending on the nature of the gene.

**Components:** The ORF clone is ion-exchange column purified and shipped in a 2D barcoded Matrix tube containing 10ug of transfection-ready, dried plasmid DNA (reconstitute with 100 ul of water).

- Reconstitution Method:**
1. Centrifuge at 5,000xg for 5min.
  2. Carefully open the tube and add 100ul of sterile water to dissolve the DNA.
  3. Close the tube and incubate for 10 minutes at room temperature.
  4. Briefly vortex the tube and then do a quick spin (less than 5000xg) to concentrate the liquid at the bottom.
  5. Store the suspended plasmid at -20°C. The DNA is stable for at least one year from date of shipping when stored at -20°C.

RefSeq: [NM\\_172303.4](#), [NP\\_758507.3](#)

RefSeq Size: 5385 bp

RefSeq ORF: 2505 bp

Locus ID: 269424

UniProt ID: [Q6ZPI0](#)

Cytogenetics: 3 B

**Gene Summary:** Component of the HBO1 complex which has a histone H4-specific acetyltransferase activity, a reduced activity toward histone H3 and is responsible for the bulk of histone H4 acetylation in vivo. Transcriptional coactivator, it may also promote acetylation of nucleosomal histone H4 by KAT5. Promotes apoptosis. May act as a renal tumor suppressor. Negatively regulates canonical Wnt signaling; at least in part, cooperates with NPHP4 in this function (By similarity). [UniProtKB/Swiss-Prot Function]