

Product datasheet for **MG210848**

Nfatc1 (BC061509) Mouse Tagged ORF Clone

Product data:

Product Type:	Expression Plasmids
Product Name:	Nfatc1 (BC061509) Mouse Tagged ORF Clone
Tag:	TurboGFP
Symbol:	Nfatc1
Synonyms:	Nfatcb, NFAT2, NFATc, NF-ATc
Mammalian Cell Selection:	Neomycin
Vector:	pCMV6-AC-GFP (PS100010)
E. coli Selection:	Ampicillin (100 ug/mL)



[View online »](#)

ORF Nucleotide Sequence:

>MG210848 representing BC061509
 Red=Cloning site Blue=ORF Green=Tags(s)

TTTTGTAATACGACTCACTATAGGGCGGCCGGAATTCGTCGACTGGATCCGGTACCGAGGAGATCTGCC
 GCC**CGATCGCC**

ATGCCAAGTACCAGCTTTCCAGTCCCTTCCAAGTTTCCACTCGGCCCTCCGGCCGAGTCTGCGGGAGCG
 GAGAAACTTTGCGGCCCGCGCCCTCCGGCGGCACCATGAAGGCGGCCGAGGAAGAACAACACTACAGTTA
 TGTGTCCCTAGTGTACCTCGACCCTGCCCTTCCACAGCACACTCTGCCTTGCCAGCAGCATGCCAC
 GACCTCCAGACGTCCACCCGGGTATCTCAGCTGTTCTTCCAGCCAATCATCCCCCAGTTACGGAGGGG
 CTGTGGACAGCGGCCTTCGGGATACTTCTGTCTCTGGCAACACCAGACCCAACGGGGCCCCGACTCT
 GGAGAGTCCGAGAATCGAGATCACCTCTACCTGGGCCTACACCATGGCAGCGGCCAGTTTTTCCACGAC
 GTGGAGGTGGAAGACGTACTTCTAGTGAAGCGCTCACCGTCTACAGCAACCTGCACCTGCCAGCC
 TGAAGCCTACAGAGACCCCTCTGCTGAGCCAGCCAGCAGTCTCTCTCCAGAAGCTGTAACCTGA
 GGCTCTCTACGAGTCCAACACTCTACCCATACGCGTCCCCCAGACCTCTCGTGGCAGTACCC
 TGGTGTCTCCAAGACCACGGACCCGGAGGAGGTTTTCCCGAAGCCTGGGTGCCTGCCACCTGCTAG
 GATCGCCAGGCACTCCCATCCACCTCTCTCGGGCAAGCATCACGGAGGAGAGCTGGCTCGGTGCCCCG
 CGGCTCCCGGCCACGTCCCCCTGCAACAAGCGCAAGTACAGTCTCAATGGCCGGCAGCCCTCTGCTCA
 CCCCACCACTACCCACACCATCCCCCATGGCTCCCCTCGGGTCAAGTGTGACCGAAGATACCTGGCTCG
 GTAACACCACCCAGTATACCAGCTCTGCCATTGTGGCAGCCATCAACGCCTGACCACCGATAGCACTCT
 GGACCTGGGTGATGGGGTCCCTATCAAGTCTCGAAAGACAGCACTGGAGCATGCGCCCTCTGTGGCCCTC
 AAAGTAGAGCCAGCTGGGAAGACCTGGCACCACCTCCACCACTTCTGACTTCCACCCGAGGAGTACA
 CCTCCAGCACCTTCGGAAGGGTGCCTTTTGGCAGCAGTATCTGTGGTCCACAGGCCTCGTATCAGT
 GGCGAAGCCCAAGTCTCTTTCCCGACATCATATAGAGCCCATCCTTGCCTGCCCTTACTGGCAGCTC
 CCGTACATTCTGGTCCATACGAGCTTCGGATCGAGGTGACGCCAAGTCTCACCAAGGGCTCACTATG
 AGACGGAAGGCAGCCGGGGGCTGTGAAGGCTTCACTGGAGGACACCCATTGTGCAGTACACGGTTA
 CTTGGAGAATGAACCTCTACGCTACAGCTGTTCAATTGGGACGGCTGACGACCGCTGCTGAGGCCCCAC
 GCCTTCTACCAGGTCCACCGGATCACGGGAAGACTGTCTCCACCACAGCCAGAGATCATCTGTCCA
 ACACCAAAGTCTGGAGATCCCCTTGTCTCCAGAAAATAACATGCGAGCCATCATCGACTGTGCTGGGAT
 CCTGAAGCTCAGAACTCTGATATTGAGCTGAGGAAAGGGGAGACAGACATCGGGAGGAAGAACCAGG
 GTGAGGCTGGTCTCCGAGTTCACATCCCACAGCCCAATGGCCGGACGCTGTCTCTCCAGGTGGCCTCGA
 ACCCTATCGAGTGTCCAGCGGTACGCCAGGAGCTGCCCTCGTGGAGAAGCAGAGCAGACAGAGCTA
 CCCAGTATCGGCGGGAAGAAGATGGTGTGTCTGGCCATAAATTCTGCAAGACTCCAAGTCAATTTTC
 GTGGAGAAGGCTCCAGATGGCCACCACGTCTGGGAGATGGAAGCAAGACTGACCGGGACCTGTGCAAGC
 CAAATTCCTGGTGGTTGAGATACCACCTTCCGCAACCAGAGGATAACCAGCCCCGTCCAAGTCAATTT
 CTATGTCTGCAACGGGAACGGAAGAGAAGCCAGTACCAGCGTTTACGTACCTTCTGCCAATGTTCCA
 ATTATAAAGACAGAACCACGGACGACTTTGAGCCAGCTCTGACCTGTGGACCAATGAGCCAGGGGATTA
 GTCCTCTGCCGAGGCCTTACTACAGCCAACAGCTCACCATGCCTCCCGACCCCGGCTCTGCCTCGTGGC
 TGGCTTCCGCCCTGCTCCAGAGGAACACGCTGATGCCACGCCTCCCAACGCAAGCCGAAGCTCCAC
 GACCTTTCTCTCTGCTACACCAAGGGCTCACCAACCCGGGCCACAGTGGTACCTTGGACTTCAGC
 CACCCGCTTCGGAGGCCCCACCATGCAGGAAGTGCCGAGACCCATGGCCATCCAACCAACTCGCTGA
 GCAGCCCCATCCGCGAGGCTACAGCCGACG

AG**CGGACCG**ACGCGTACGCGGCCGCTCGAG – GFP Tag – GTTTAA

Protein Sequence: >MG210848 representing BC061509
 Red=Cloning site Green=Tags(s)

```

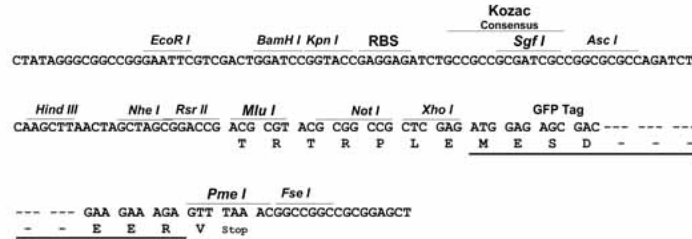
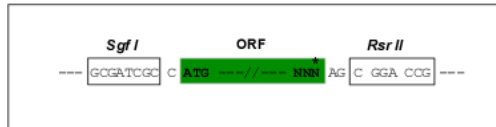
MPSTSFVPVPSKFPLGPPAAVCGSGETLRPAPPSGGTMKAAEEEHYSYVSPSVTSTLPLPTAHSALPAACH
DLQTSTPGISAVPSANHPPSYGGAVDSGPSGYFLSSGNTRPNGAPTLESPRIEITSYLGLHHGSGQFFHD
VEVEDVLPSCKRSPSTATLHLPSEAYRDPSCSPASSLSSRSCNSEASSYESNYSYPYASPQTSWPQSP
CVSPKTTDPEEGFPRSLGACHLLGSPRHSPSTSPRASITEESWLGARGSRPTSPCNKRKYSLNGRQPSCS
PHHSPTSPHGSPPRVSVTEDTWLGNTTQYTSSAIVAAINALTTDSTLDLGDGVPIKSRKTALEHAPSVAL
KVEPAGEDLGTTPPTSDFPPEEYTFQHLRKGAFCEQYLSVPQASYQWAKPKSLSPTSYSMPSLPALDWQL
PSHSGPYELRIEVQPKSHHRAHYETEGSRGAVKASAGGHPVQLHGYLENEPLTLQLFIGTADDRLLRPH
AFYQVHRITGKTVSTTSHEIILSNTKVLEIPLLPENNMRAIIDCAGILKLRNSDIELRKGETDIGRKNTR
VRLVFRVHIPQPNGRTLSQLVANSPIECSQRSAQELPLVEKQSTDSYPVIGGKMMVLSGHNFLQDSKVIF
VEKAPDGHVWEMEAKTDRDLCKPNSLVVEIPFRNQRITSPVQVSFYVCNGKRRSQYQRFTYLPANVP
IIKTEPTDDFEPALTCGPMSQGISPLPRPYYSQQLTMPPDPGSCLVAGFAPCSQRNTLMPTPPNASPKLH
DLSSPAYTKGLTNPGHSGHLGLQPPASEAPTMQEVPRPMAIQNSPEQPPSARLQPQ
  
```

SGPTRRRLE - GFP Tag - V

Restriction Sites: Sgfl-RsrII

Cloning Scheme:

Cloning sites used for ORF Shuttling:


ACCN: BC061509

ORF Size: 2483 bp

OTI Disclaimer: The molecular sequence of this clone aligns with the gene accession number as a point of reference only. However, individual transcript sequences of the same gene can differ through naturally occurring variations (e.g. polymorphisms), each with its own valid existence. This clone is substantially in agreement with the reference, but a complete review of all prevailing variants is recommended prior to use. [More info](#)
OTI Annotation: This clone was engineered to express the complete ORF with an expression tag. Expression varies depending on the nature of the gene.

Components: The ORF clone is ion-exchange column purified and shipped in a 2D barcoded Matrix tube containing 10ug of transfection-ready, dried plasmid DNA (reconstitute with 100 ul of water).

- Reconstitution Method:**
1. Centrifuge at 5,000xg for 5min.
 2. Carefully open the tube and add 100ul of sterile water to dissolve the DNA.
 3. Close the tube and incubate for 10 minutes at room temperature.
 4. Briefly vortex the tube and then do a quick spin (less than 5000xg) to concentrate the liquid at the bottom.
 5. Store the suspended plasmid at -20°C. The DNA is stable for at least one year from date of shipping when stored at -20°C.

RefSeq: [BC061509](#), [AAH61509](#)

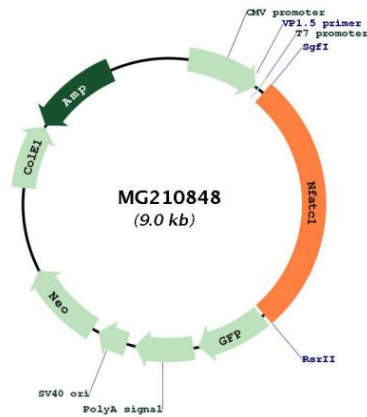
RefSeq Size: 4626 bp

RefSeq ORF: 2483 bp

Locus ID: 18018

Cytogenetics: 18 53.66 cM

Product images:



Circular map for MG210848