

Product datasheet for **MG210846**

Sidt1 (NM_198034) Mouse Tagged ORF Clone

Product data:

Product Type:	Expression Plasmids
Product Name:	Sidt1 (NM_198034) Mouse Tagged ORF Clone
Tag:	TurboGFP
Symbol:	Sidt1
Synonyms:	AW045928; B830021E24Rik
Mammalian Cell Selection:	Neomycin
Vector:	pCMV6-AC-GFP (PS100010)
E. coli Selection:	Ampicillin (100 ug/mL)



[View online »](#)

ORF Nucleotide Sequence:

>MG210846 representing NM_198034
 Red=Cloning site Blue=ORF Green=Tags(s)

TTTTGTAATACGACTCACTATAGGGCGGCCGGAATTCGTCGACTGGATCCGGTACCGAGGAGATCTGCC
 GCC**CGCATCGCC**

ATGCTGGACTGCCTGCGCCTGGCGCTGCTCTGCGCGCTGCCCTGGCTCCTGCGGGCGCGGTCCCTGGCC
 ACCAGGAAGAGCCCTCGCGAAATCCGCAGAGCTGCGGCCGATCCGCGAGACCCGCCAGGGGAGCGGA
 TTTTCGATCGCGTCTACAGCGGGTGGTGAAGCCTCAGCACCGAGAACATCTACTCCTTCAACCACACCAGC
 CATCCTGGCCAGGTGACAGCCGTGCGGGTGCATGTCAACAGTTCCCTCTGACAACCTGGACTACCCAGTCC
 TGGTTGTGGTTCCGACGAGAAAGAGTGTTCCTGGCAGGTCCTCTGCTCTTCAAGGACTATACCA
 AAGGAGCTACAACACCAGGAAGTCAGCCGCACTCTATGCCCTTCAAAGCAACCAATGAGACGGGCCCT
 TTGGAGCAGCTGATCTTTGTAGATGTAGCGTCCATGGCGCCCATGGTGGCCACTACAAGTTGCTGGTCA
 CAAAAATCAAGCACTTCCAGCTCCGACGAATGTTGCCTTCTACTTCACTGCCAGCCCTCTCAACCTCA
 GTATTTCTATACAAATTTCTGAAGACGTGGACTCCGTTATCATTAAAGTGGTGTCTGAGAAGGCTTAC
 CCGTGTTCAGTTGCTCCGTTCCAGAACATCATGTGTCCAGTGTATGATCTGGACCACAATGTGGAATTC
 ATGGTGTCTATCAGTCCATGACCAAGAAAGCCGCATCACGCTGCAGAAGAAGGATTTTCCAGATGAGCA
 GTTCTTCGTGGTGTGTTGTGATAAAACCTGAAGATTATGCCTGTGGCGGATCATTCTCCATCCAGGAAAAT
 GAAAACAGACCTGGAATCTACAACGATCAAAGAACCTGAAAGTGACCATTGTCCATCCATCAAAGAAT
 CTGTATATGTGAAATCTAGTCTTTTCAGCATATTCGTTTTCTTGTCTTCTACTTGGGATGCCTGCTCGT
 TGTGCTTGTCCATCATGTGAGGTTTCAGAGGAAATCTATTGACGGAAGCTTTGGTCCAGCGATGGCTCT
 GAAATATGGCTGTCTCACATCCCATCTGCGCAGCAGCCGAAAGGGAGCAATTATGGGCAATAGATG
 AGTCCAGTTCAGTCCGGGAGGAGAGTGTCTTCCGATGGTGGCGAGCCTTGGCCACTCAGACACGCGGA
 CAGCTCTGTGGAGGAGAGTACTTTGATACCATGCCTGACATCGAAAGCGACAAAAACGTATCCGGACC
 AAGATGTTCTGTACCTGTGAGTCTGTCCAGGAAGGACCGGAGGATTGTGAGCAAAAAAGTATAAGATT
 ATTTTTGGAACATCATCACCATCGCTGTGTTTTATGCACTGCCTGTGATGCAGCTTGTATCACCTACCA
 GACAGTGGTGAATGCACTGGCAACCAGGATATCTGTTACTACAACCTCCTTTGTGCTCACCCCTGGGT
 GTCCTGAGCGCCTTCAATAATTTCTCAGTAACCTGGGCCAGTACTCCTGGGCTTCTCTTCTGCTGA
 TAGTTCTGCGCAGAGACCTTCTCCACCGAAGAGCCCTGGAAGCTAAAGACATCTTGTATGGAATACGG
 TATTCCAAACACTTTGGTCTCTTCTACGCTATGGGGATAGCACTGATGATGGAGGGCGTCTCAGTGT
 TGTACCATGTCTGCCCTAATTACTCCAACCTCCAGTTGACACTTCTTCTCATGTACATGATCGCTGGCC
 TCTGCATGCTGAAGCTCTATCAGACCCGCCACCCGGACATCAACGCCAGCGCCTACTCTGCTTATGCCTC
 TTTCGCTGTGGTATCACACTGACGGTCCCTCGGAGTGGTGTGAAAAAACGATGTGTGGTTCTGGATC
 ATCTTCTCTGCCATCCACATTCTCTTCTCTGGCCCTCAGCACCCAAATCTACTACATGGGCCGTTTCA
 AGATAGATCTGGGAATCTTCCGGCGGGCTGCTATGGTGTCTACACGGACTGTATCCAGCAATGCAGCAG
 ACCTCTGTATATGGACAGGATGGTGTGCTCATTGTGGGAAATCTGGTTAATTGGTCTTTGCTTCTTT
 GGATTGATCTACCGCCAGGACTTTGCCTCCTACATGCTGGGCATCTTCTGCAACCTGCTGCTGT
 ACTTGGCTTTCTACATCATCATGAAGCTTCGAAGCTCTGAGAAAGTCTCCCGCTACCAGTCTTCTGCAT
 CGCGGCCACTGCCGTGGTGTGGGCTGCGGCACTGTACTTCTTCCAGAACCTCAGCAGCTGGGAGGGG
 ACCCTGCAGAAATCCCGGAGAAGAACCTGAGTGTGCTGCTGCTGGATTCTTTGATGACCATGACATCT
 GGCACTTCTCTGCGACTGCCCTGTTTTCTATTCTGCTGCTGTTGACCCTGGATGATGACCTGGA
 TGTGGTCCGAGAGACCAGATCCCTGTCTTC

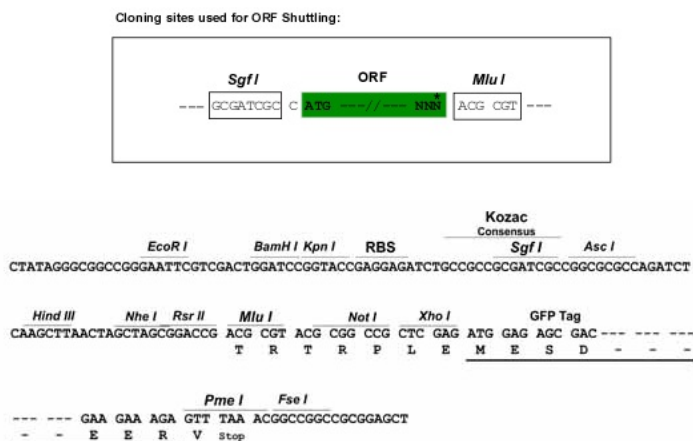
ACGGTACGCGGCCGCTCGAG – GFP Tag – GTTTAA

Protein Sequence: >MG210846 representing NM_198034
Red=Cloning site Green=Tags(s)

MLDCLRLALLCALPWLRAAVPGHQEEPLAKSAELRRDPRDPARGADFRVYSGVVSLSTENIYSFNHTS
HPGQVTAVRVHVNSSDNDYPVLVVVRQQKEVLSWQVPLLFQGLYQRSYNYQEVSRTLCPKATNETGP
LEQLIFVDVASMAPHGAHYKLLVTKIKHFQLPTNVAFYFTASPSQPQYFLYKFPEDVDSVIKVVSEKAY
PCSVVSVQNMCPVYDLDHNVFNGVYQSMTKKAATLQKKDFPDEQFFVVFVIKPEDYACGGSFISIEN
ENQTNLQRSKNLKVTVIIPSIKESVYVKSSLFSIFVFLSFYLGCLLVLVVHHVRFQRKSIDGSFGSSDGS
GNMAVSHPIASTPEGSNYGAIDESSSPGRQMSSDGGQPCHSDTDSSVEESDFDTMPDIESDKNVIRT
KMFLYLSDLSRKDRRIVSKKYKIYFVNIITIAVFYALPVMQLVITYQTVVNVVTGNQDICYNFLCAHPLG
VLSAFNNILSNLGHVLLGFLFLLIVLRRDLLHRRALEAKDIFAMEYGIPKHFGLFYAMGIALMMEGVLSA
CYHVCPNYSNFQFDTSMYMIAGLCMLKLYQTRHPDINASAYSAYASFVITLTVLGVVFGKNDVWFVI
IFSAIHILSSLALSTQIYYMGRFKIDLGIFRAAMVFYTDICIQQCSRPLYMDRMVLLIVGNLVNWSFAFF
GLIYRPRDFASYMLGIFICNLLLYLAFYIIMKLSSEKVLPLPVFCIAATAVVWAAALYFFFQNLSSWEG
TPAESREKNRECVLLDFDDHDIWHFLSATALFFSFLVLLTLDDDLDVVRRDQIPVF

TRTRPLE - GFP Tag - V

Restriction Sites: Sgfl-MluI

Cloning Scheme:


ACCN: NM_198034

ORF Size: 2481 bp

OTI Disclaimer: The molecular sequence of this clone aligns with the gene accession number as a point of reference only. However, individual transcript sequences of the same gene can differ through naturally occurring variations (e.g. polymorphisms), each with its own valid existence. This clone is substantially in agreement with the reference, but a complete review of all prevailing variants is recommended prior to use. [More info](#)

OTI Annotation: This clone was engineered to express the complete ORF with an expression tag. Expression varies depending on the nature of the gene.

Components: The ORF clone is ion-exchange column purified and shipped in a 2D barcoded Matrix tube containing 10ug of transfection-ready, dried plasmid DNA (reconstitute with 100 ul of water).

Reconstitution Method:

1. Centrifuge at 5,000xg for 5min.
2. Carefully open the tube and add 100ul of sterile water to dissolve the DNA.
3. Close the tube and incubate for 10 minutes at room temperature.
4. Briefly vortex the tube and then do a quick spin (less than 5000xg) to concentrate the liquid at the bottom.
5. Store the suspended plasmid at -20°C. The DNA is stable for at least one year from date of shipping when stored at -20°C.

RefSeq: [NM_198034.3](#)

RefSeq Size: 4267 bp

RefSeq ORF: 2484 bp

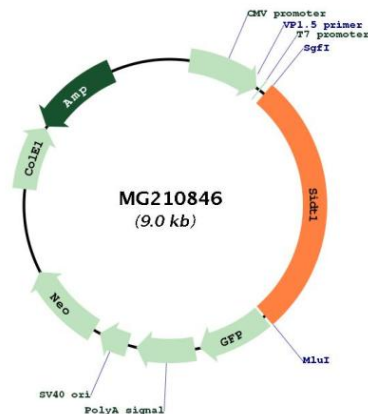
Locus ID: 320007

UniProt ID: [Q6AXF6](#)

Cytogenetics: 16 B4

Gene Summary: In vitro binds long double-stranded RNA (dsRNA) (500 and 700 base pairs), but not dsRNA shorter than 300 bp (PubMed:26067272). Not involved in RNA autophagy, a process in which RNA is directly imported into lysosomes in an ATP-dependent manner, and degraded (PubMed:27046251).[UniProtKB/Swiss-Prot Function]

Product images:



Circular map for MG210846