

Product datasheet for **MG210845**

Rhbdf2 (NM_172572) Mouse Tagged ORF Clone

Product data:

Product Type:	Expression Plasmids
Product Name:	Rhbdf2 (NM_172572) Mouse Tagged ORF Clone
Tag:	TurboGFP
Symbol:	Rhbdf2
Synonyms:	4732465I17Rik; cub; Rhbdl6
Mammalian Cell Selection:	Neomycin
Vector:	pCMV6-AC-GFP (PS100010)
E. coli Selection:	Ampicillin (100 ug/mL)



[View online »](#)

ORF Nucleotide Sequence:

>MG210845 representing NM_172572
Red=Cloning site Blue=ORF Green=Tags(s)

TTTTGTAATACGACTCACTATAGGGCGGCCGGGAATTCGTCGACTGGATCCGGTACCGAGGAGATCTGCC
GCC**CGGATCGCC**

ATGGCCTCAGCTGACAAGAATGGCAGCAACCTCCCATCTGTGTCTGGTAGCCGCCTGCAGAGCCGGAAGC
CACCCAACCTCTCCATCACCATCCCGCCACCAGAGAGCCAGGCCCCCGGCGAGCAGGATAGCATGCTTCC
TGAGAGGCGCAAGAACCAGCCTACCTGAAGAGTGTACAGCTACAGGAGCCCGGGGACGATGGCAGGAG
GGCGCAGAGAAGCGCCCGGCTTCCGCCCCAGGCCTCCCTGTCCAGAGCATCCGCAAGAGCACAGCCC
AGTGGTTTGGGGTACGCGGCAGCTGGGAGGGCAAGCGACAAAACCTGGCATCGTCGCAGCCTGCACCACTG
CAGCGTGCATATGGCCGCCTCAAGGCCTCGTGCCAGAGAGAAGTGGAGCTGCCAGCCAGGAGGTGCCA
TCCTTCCAGGGCACTGAGTCTCCAAAACCGTGCAAGATGCCAAGATTGTGGATCCACTGGCTCGGGGTA
GGCCCTCCGCCATCCAGATGAGGTGGACCGGCCTCACGCTGCCACCCACCTCTGACTCCAGGGGTCTCT
GTCTCTCACATCCTTACCAGTGTCCGCTCTGGCTACTCCCATCTGCCCGCCGCAAGAGGATATCTGTT
GCCCATATGAGCTTTCAGGCAGCCCGCCCTCCCAAGGGGCGTTCCGTGCTAGATGCGACTGGGCAGC
GGTGCCCGCATGTCAAACGCAGCTTCGCTTACCCAGCTTCTCGAGGAGGATGTGTGATGGAGCTGA
CACCTTCGACTCCTCTTTTTAGTAAGGAAGAAATGAGCTCCATGCCTGACGATGTCTTTGAGTCCCC
CCTCTCTGCCAGCTACTTCCGAGGTGTCCACACTCTGCCTCCCCGGTCTCCCCGGATGGAGTGACACA
TCCCGCTAAAAGAATACAGCGGTGGCCGAGCCCTGGGTCCCGGACCCAGCGTGGCAAACGCATTGCCTC
CAAAGTAAAGCACTTTGCATTTGACCGGAAGAAGAGGCACTACGGCTGGGCGTGTGGGTAAGTGGCTC
AACCGAAGCTATCGACGCAGCATCAGCAGCACCGTGCAGCGGCAGCTGGAGAGCTTCGATAGCCACCGGC
CCTACTCACCTACTGGCTGACGTTCTGTCACATCATCACCTTGTGGTGATCTGCACCTATGGCAT
CGCACCTGTGGGCTTGGCCAGCACGTTACCACCCAGCTGGTGCTGAAGAAGACAGAGGCGTGTATGAGAGC
GTGAAGTACATCCAGCAGGAGAAGTCTGGATTGGCCCCAGCTCGATTGACCTCATTACCTGGGAGCAA
AGTTCTCGCCCTGCATCCGGAAGGACCAGCAAATTGAGCAGCTGGTACGGAGGGAGCGGACATTGAGCG
CACCTCTGGCTGTGTGTCAGAAATGACCGCTCGGGCTGCATCCAGACCCTGAAGAAGGACTGCTCGGAG
ACTTTAGCCACGTTCTGTAAGTGGCAGAATGATACTGGGCCCTCAGACAAGTCTGACCTGAGCCAGAAGC
AGCCATCGGCGGTTGTGTGCCACCAAGACCCAGGACCTGTGAAGAGCCTGCCTCCAGTGGGGCCACAT
CTGGCCTGATGACATTACCAAGTGGCCGATCTGCACAGAGCAGGCTCAGAGCAACCACACGGCTTGTG
CACATAGACTGTAAGATCAAAGCGCCCTGCTGCATCGGCACCAAGGGCAGCTGCGAGATCACCACTC
GGGAGTACTGTGAGTTTATGCATGGCTATTTCCATGAAGACGCGACGCTGTGTTCCAGGTGCACCTGTT
AGACAAGGTGTGTGGGCTCCTGCCTTCTCAACCCTGAGGTCCCTGACCAGTTCTACCGGATCTGGCTG
TCTTTATCTGCATGCTGGCATAGTGCAGTGCCTTGTGTCTGTGGTCTTCCAAATGACCATCCTGAGGG
ACCTAGAGAAGCTGGCCGGCTGGCACCAGCATCTCCATCATCTTATCCTTAGTGGCATTACAGGCAACCT
GGCCAGCGCCATCTTCTCCCCTACCGGGCAGAGGTGGGCCAGCCGGGTGCGAGTTCCGGCTCCTCGCC
TGCCCTCTCGTGGAGCTGTTCCAGAGCTGGCAGCTGTTGGAGCGGCCGTGGAAGGCCTTCTCAACCTGT
GTTCTCAGCGGCATGCTTCTGGCCTTCGCTTCCCTGACATTACCTTCGGCACAGGCAAGTAC
CGCAAGCGAGCCCTCATCCTCGTGTGCTGCTGTTCTTTGCTGGGCTCTTTGCTCCCTGGTGTGTGGC
TGTACATCTACCCATCAACTGGCCCTGGATCGAGTACCTCACCTGCTTTCCTTACCAGCCGCTTCTG
TGAGAAGTACGAGCTAGACCAGGTGCTACAC

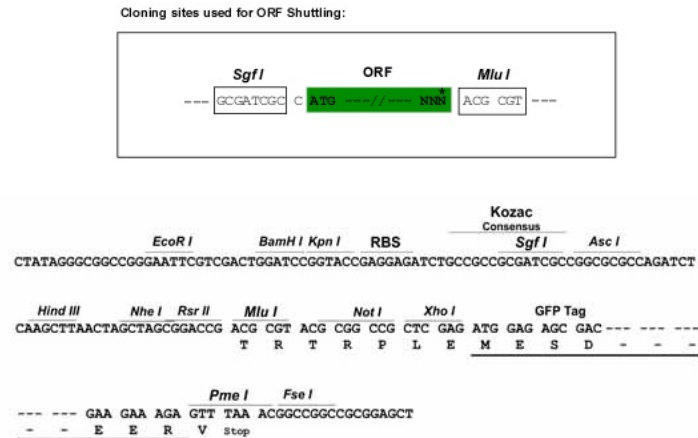
ACGGTACGCGGCCGCTCGAG - GFP Tag - GTTTAA

Protein Sequence: >MG210845 representing NM_172572
 Red=Cloning site Green=Tags(s)

```
MASADKNGSNLPSVSGSRLQSRKPPNLSITIPPPESQAPGEQDSMLPERRKNPAYLKSVSLSQEPRGRWQE
GAEKRPGFRRQASLSQSIRKSTAQWFGVSGDWEGRQNWHRSLHHC SVHYGRLKASCQRELELPSQEVP
SFQGTESPKPCKMPKIVDPLARGRAFRHPDEVDRPHAAHPPLTPGVLSLTSFTSVRSGYSHLPRRKRISV
AHMSFQAAAAALLKGRSVLDATGQRCRHVKRSFAYPSFLEEDAVDGADTFDSSFFSKEEMSSMPDDVFESP
PLSASYFRGVPHSASPVPDGVHIPLKEYSGGRALGPGTQRGKRIASKVKHFAFDRKKRHYGLGVVGNWL
NRSYRRSISSTVQRQLESFDSHRPYFTYWLTFVHIITLLVICTYGIAPVGFAQHVTTLVLKNRGVYES
VKYIQQENFWIGPSSIDL IHLGAKFSPCIRKDQQIEQLVRRERDIERTSGCCVQNDRSGCIQTLKKDCSE
TLATFVKWQNDTGPSKSDL SQQQPSAVVCHQDPRTCEEPASSGAHIWPDDITKWPICTEQAQSNHTGLL
HIDCKIKGRPCCIGTKGSC EITTREYCEFMHGYFHEDATLCSQVHCLDKVCGLLPFLNPEVPDQFYRIWL
SLFLHAGIVHCLVSVVFQMTILRDLEKLAGWHRISIIIFILSGITGNLASAIFLPYRAEVGPAGSQFGLLA
CLFVELFQSWQLLERPWKAFFNLSAIVLFLFICGLLPWIDNIAHIFGFLSGMLLAFALPYITFGTSDKY
RKRALILVSLLVFAGLFASLVLWLYIYPINWPWIEYLTCFPFTRFCEKYELDQVLH
```

TRTRPLE - GFP Tag - V

Restriction Sites: Sgfl-MluI

Cloning Scheme:


ACCN: NM_172572

ORF Size: 2481 bp

OTI Disclaimer: The molecular sequence of this clone aligns with the gene accession number as a point of reference only. However, individual transcript sequences of the same gene can differ through naturally occurring variations (e.g. polymorphisms), each with its own valid existence. This clone is substantially in agreement with the reference, but a complete review of all prevailing variants is recommended prior to use. [More info](#)

OTI Annotation: This clone was engineered to express the complete ORF with an expression tag. Expression varies depending on the nature of the gene.

Components: The ORF clone is ion-exchange column purified and shipped in a 2D barcoded Matrix tube containing 10ug of transfection-ready, dried plasmid DNA (reconstitute with 100 ul of water).

Reconstitution Method:

1. Centrifuge at 5,000xg for 5min.
2. Carefully open the tube and add 100ul of sterile water to dissolve the DNA.
3. Close the tube and incubate for 10 minutes at room temperature.
4. Briefly vortex the tube and then do a quick spin (less than 5000xg) to concentrate the liquid at the bottom.
5. Store the suspended plasmid at -20°C. The DNA is stable for at least one year from date of shipping when stored at -20°C.

RefSeq: [NM_172572.4](#)

RefSeq Size: 3856 bp

RefSeq ORF: 2484 bp

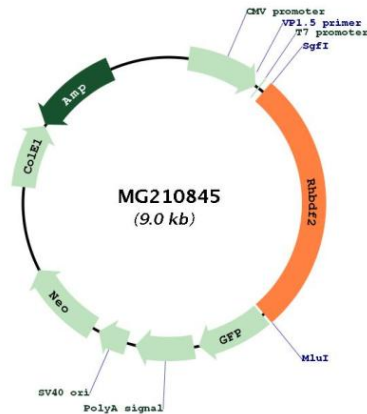
Locus ID: 217344

UniProt ID: [Q80WQ6](#)

Cytogenetics: 11 E2

Gene Summary: Regulates ADAM17 protease, a sheddase of the epidermal growth factor (EGF) receptor ligands and TNF, thereby plays a role in sleep, cell survival, proliferation, migration and inflammation. Does not exhibit any protease activity on its own.[UniProtKB/Swiss-Prot Function]

Product images:



Circular map for MG210845