

Product datasheet for **MG210819**

Prom2 (BC039212) Mouse Tagged ORF Clone

Product data:

Product Type:	Expression Plasmids
Product Name:	Prom2 (BC039212) Mouse Tagged ORF Clone
Tag:	TurboGFP
Symbol:	Prom2
Synonyms:	Prom-rp, MGC31164
Mammalian Cell Selection:	Neomycin
Vector:	pCMV6-AC-GFP (PS100010)
E. coli Selection:	Ampicillin (100 ug/mL)



[View online »](#)

ORF Nucleotide Sequence:

>MG210819 representing BC039212
 Red=Cloning site Blue=ORF Green=Tags(s)

TTTTGTAATACGACTCACTATAGGGCGGCCGGAATTCGTCGACTGGATCCGGTACCGAGGAGATCTGCC
 GCC**CGGATCGCC**

ATGACGCGCTCACCCGGCCTCATGGTGCCCTGCTGGCCTGAGCCTGGGACTGGCCTGAGCCTGCCCC
 AAGCTGTGACAGACGACTGCGGGTCCCTCGGGCGCGTGGAGCACCTGGCATTGCTCGGGTGCCAGGAC
 ACGAGAGCTGGCCCTCTTGTTCGCGCGTGGGGCCCTGAACTCCCTCTATGGACCGTGCACGATTC
 CTCTCCGTGGTTCAACTAACCCTTCCCGCAGAGTTGATAAAGACCCTGCTGAATGACCCATCTTCTG
 TGAAGACAGATGAGGTGGTTCGATATGAGGCAGGCTACGTGGTGTGTGCTGTGATTGCTGGCCTCTACCT
 CCTATTGGTGCCCATCACTGGGCTGCTTCTGTTGCTGTCGCTGCCGCCAGCGCTGTGGGGCAGAGTG
 AAGACGGAGCACAAGCCATGGCCTGTGAACGTGGTACCCTCATGATCTTCTGCTGCTGACCACCCTCG
 TGCTTCTGATTGGTATGGTCTGTGCTTTTGTACAAACCAACACACATAGTCAGACGGGGCCAGTGT
 GAAAGCTGTCCTGAGACCCTGCTCAGCCTAAGAGGCCTGGTCTCTGATGCCCTGAAGAGCTGCGGGCC
 ATTGCTGAGCAGTTCTCTGTGCCTCAGAAGCAAGTCTCAAAGGAGCTGGATGGTGTGGTGAAGACCTTG
 GGAACGTAATTCATAACCGGCTCAAGAGCACAGTGTACCCAGTGTAGCCTCAGTGCACAGCCTGGGCCA
 GGCCCTGCAGGTCTCATAGACCACCTTCGAGCCCTGAACACCACCTCAGTGGAGCTGCAGGAGGCTCAG
 CGGCACCTGGAGCCACCTGTGCAGGCGCACCGGGAACGCCTGCTCGCCCTGCTTCAGGACAGCTGGTGCC
 ACGAGGAGAATTGCAAGCGGGTGTCTCAGCCAGGCGCGTGTCTGCAACTGGGCGCTGACTTTAGCCAGAC
 GCCCCCTGTGGATGATGCTCCTGCATCGGCTGAAGGATGTCCAGAAACCAACTTCTCCAGCATGGTCCAG
 GAGGAAAAGCCACCTTCAATAACCTCCCGCTCCTGGTTCAAGTGCAGGCGGTGAGTGGTCAAAGATG
 TGAAAAAGGCACCTGGCTGAGCAGCCTGAAGGGTTGAGGATGCTGGCCCAAGCGTTCAGGTTGAGAGG
 AGCCTCCCGCTGGAGCCAGGCACCTGGAGGGGCTGGAACAGCGCAGCCGCCCTACTTGCAGGAGGTGCAA
 CAATATGAGACATACAGGTGGATTTGGGATGCGTGTGCTGCTGCTGCTGCTGCTGCTGCTGCTGCTGTA
 ACCTGCTGGGCTCAGCCTGGGCATCTGGGGTGTGTTGCCAGGGAGGACCCAGCCACTCTGAAACCAA
 GGGCGAGGCTGGAGCCCGCTCCTCATGGCAGGTGTGGCCTTCAGCTTCTCTTCGCAGTCCCCCTCATC
 CTCCTCGTCTTCGTCACCTTCTGGTGGTGGCAATGTGCAGACGCTGGTGTGCCGAGCTGGGAGAGTG
 GAGAGCTGTATGAGTTTGCAGACACTCCGGGAACTTGCACCATCCATGAACCTATCCTATCTTCTTGG
 CCTGAAGAAAAACATCAGTATCGTCCAGGCCTATCGACAGTGTAAAGCAGGGGCAGTACTCTGGAAGTT
 CTACAGCTCAATGACTCGTATGACCTGGATAAGCACCTGGATATCAAACAGTATACCCACAAGATTCAGC
 AGGAGCTTCAGAGCTCCAAGTAGATTTGAAGGAGCTAGACCTGTTGAGCCCACTGCCCGCCAGGACCT
 GGAGGCTTTGCAGAGGAGCGGGCTGGAGAAAATCCACTACAGAGGCTTCCTTGTGCAGATCCAGAAGCCT
 GTGGTGAACACTGACATGTGGCAGCTGGCGCAGGAGCTGGAAGGACTGGCCAGGCCAAAATGACTCTT
 TACTGAGGCAGCAGCTACAGGAGGAGGCCAGAGAACTTCGAAGCCTTACCAGGAGAAGGTTGTCCCCCA
 GGAGAGCCTTGTGACCAAGCTCAACTTCAGTGTCAAGACCTTGGAGTCTTGGCCCAAGTCTGCAGGTG
 AATACCTCAGACTTTCTTGACAGTGTACCCGCTAAAAGGAGAGCTGCCTGTGCAGATCAACCACATCC
 TGAGGAATGCCACTGAGTGTTCCTGACCAGGAAATGGGCTACTTCTCTCAGTATGTGACCTGGGTGAG
 AGCAGAGGTGACTCAGCGCATCGCCACCTGCCAGCCCTTCTCTACAGCCCTGGACAATGGTCATGTGATC
 CTGTGTGACATGATGGCTGACCCCTGGAACGCCTTCTGGTTTTGCCTGGGGTGGTGCACCTTCTTCTCA
 TCCCCAGCATCATCTTCGCTGTCAAGACCTCAAATACTTCCGTCCTCCATCCGAAACGCCTCAGGTCAC
 CTCTCTGAAGCTA

ACGCGTACGCGGCCGCTCGAG - GFP Tag - GTTTAA

Protein Sequence: >MG210819 representing BC039212
 Red=Cloning site Green=Tags(s)

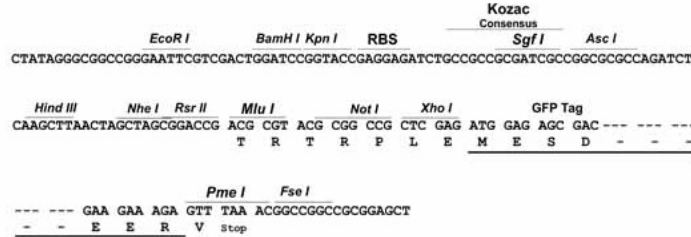
```
MTRSPGLMVPLLGLSLGLALSLPEAVTDDCGSLGRVEHLAFARVPRTRELAPLVRASGPLNSLYGTVRRF
LSVVQLNPFPAELIKTLLNDPSSVKTDEVVRYEAGYVVCVAVIAGLYLLLVPITGLCFCCRCRCRCGGRV
KTEHKAMACERGTLMIFFLLTLLVLLIGMVCAFATNQHTHSQTGPSVKAVPETLLSLRGLVSDVPEELRA
IAEQFSVPQKQVSKELDGVGENLGNVIHNRLKSTVYPVLASVHSLGQALQVSIHDLRALNTTSVELQEAQ
RHLEPPVQAHRRERLLALLQDSWCHEENCKRVLSQAGALQLGADFQTPPVDDVLHRLKDVPETNFSSMVQ
EEKATFNPLPLLQVQAVSVVKDVKKALAEQPEGLRMLAQAFPGSEAAASRWSQALEGLEQSRPYLQEVQ
QYETYRWILGCVLCSAILLVVICNLLGLSLGIWGLFAREDPSHSETKGEAGARLLMAGVAFSFLFAVPLI
LLVFVTFVLVGGNVQTLVCRSWESGELYEFADTPGNLPPSMNLSYLLGLKKNISIVQAYRQCKAGAVLWKV
LQLNDSYDLDKHLDIKQYTHKIQQELQSFQVDLKDLDLSPSTARQDLEALQRSGLEKIHRYGFLVQIQKP
VVNTDMWQLAQELEGLAQONDSLLRQQLQEEARELRSLYQEKVVPQESLVTKLNFSVKTLESLAPSLQV
NTSDFLDSVTRLKGLPQVINHILRNATECFLTREMGYFSQYVTWVRAEVTQRIATCQPFSTALDNGHVI
LCDMMADPWNAFWFCWGCTFFLIPSIIFAVKTSKYFRPIRKRLRVTSCLK
```

TRTRPLE - GFP Tag - V

Restriction Sites: Sgfl-MluI

Cloning Scheme:

Cloning sites used for ORF Shutting:



- ACCN:** BC039212
- ORF Size:** 2465 bp
- OTI Disclaimer:** The molecular sequence of this clone aligns with the gene accession number as a point of reference only. However, individual transcript sequences of the same gene can differ through naturally occurring variations (e.g. polymorphisms), each with its own valid existence. This clone is substantially in agreement with the reference, but a complete review of all prevailing variants is recommended prior to use. [More info](#)
- OTI Annotation:** This clone was engineered to express the complete ORF with an expression tag. Expression varies depending on the nature of the gene.
- Components:** The ORF clone is ion-exchange column purified and shipped in a 2D barcoded Matrix tube containing 10ug of transfection-ready, dried plasmid DNA (reconstitute with 100 ul of water).

- Reconstitution Method:**
1. Centrifuge at 5,000xg for 5min.
 2. Carefully open the tube and add 100ul of sterile water to dissolve the DNA.
 3. Close the tube and incubate for 10 minutes at room temperature.
 4. Briefly vortex the tube and then do a quick spin (less than 5000xg) to concentrate the liquid at the bottom.
 5. Store the suspended plasmid at -20°C. The DNA is stable for at least one year from date of shipping when stored at -20°C.

RefSeq: [BC039212](#), [AAH39212](#)

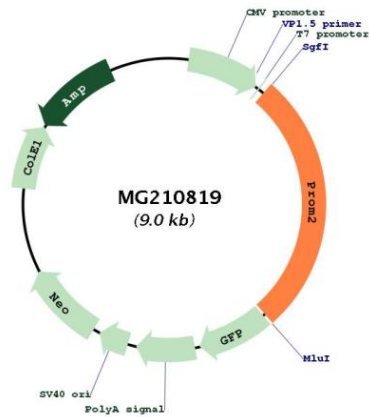
RefSeq Size: 4211 bp

RefSeq ORF: 2465 bp

Locus ID: 192212

Cytogenetics: 2 F1

Product images:



Circular map for MG210819