

Product datasheet for **MG210812**

PPP4R3B (NM_134034) Mouse Tagged ORF Clone

Product data:

Product Type:	Expression Plasmids
Product Name:	PPP4R3B (NM_134034) Mouse Tagged ORF Clone
Tag:	TurboGFP
Symbol:	PPP4R3B
Synonyms:	AW011752; AW557776; mKIAA1387; Smek2
Mammalian Cell Selection:	Neomycin
Vector:	pCMV6-AC-GFP (PS100010)
E. coli Selection:	Ampicillin (100 ug/mL)



[View online »](#)

ORF Nucleotide
Sequence:

>MG210812 representing NM_134034
 Red=Cloning site Blue=ORF Green=Tags(s)

TTTTGTAATACGACTCACTATAGGGCGGCCGGAATTCGTCGACTGGATCCGGTACCGAGGAGATCTGCC
 GCC**CGCATCGCC**

ATGTCGGATACACGGAGCGAGTGAAGGTCTATACCCCTAACGAAGACCGCAATGGGACGACCGAGGCA
 CCGGGCAGTCTCTCCACTTACGTAGAGGAGCTCAAGGGGATGTCGCTGCTGGTTCTGTCGGAGTCCGA
 CGGATCGCTACTCTTAGAGTCAAAGATAAATCCAAACTGCATATCAGAAAACAGCAGGATACATTAATT
 GTTTGGTCAGAAGCTGAAAACATGATCTGGCTTAAGTTTTCAAGAAAAAGCTGGCTGTGATGAAATTT
 GGGAAAAATTTGTCAAGTTCAAGGTAAGGACCCATCAGTAGAAGTACACAGGACCTCATTGATGAATC
 TGAAGAAGAACGATTTGAAGAAATGCCAGAACTAGTCATCTAATTGACCTGCCACATGTGAACCTCAGT
 AAACCTGAAGAGATTGCTGACTTAGTTACCTCAGTTCTCTCCTCACCTATCCGTAGGGAAAAGCTGGCTC
 TGGCCTTGAAAAATGAAGGCTATATCAAAAACTACTACAGCTATTCCAAGCTTGTGAGAACCTAGAAAA
 CACTGAAGGCTTACACCATCTGTATGAAATTATTAGAGGAATCTTATTCCTAAATAAGGCAACACTTTTT
 GAGGTAATGTTTTCTGATGAGTGTATCATGGATGTCGTGGGATGCCTTGAATATGATCCTGCTTTGGCTC
 AGCCAAAAAGACATAGAGAATTCTTAACATAAACTGCAAAGTTTAAAGGAAGTTATACCAATAACAGATTC
 GAACTAAGGCAAAAAATACATCAGACTTACAGGGTACAGTACATTACAGGACATCATTTTGCCTACACCA
 TCTGTTTTGAAGAAAATTTCTTTCTACTCTTACATCTTTTATTTTCTCAACAAAAGTTGAAATAGTCA
 GCATGCTGCAGGAAGATGAGAAGTTTTGTCTGAAGTTTTTGCACAATTAACAGATGAAGCTACAGATGA
 TGATAAACGGCGCGAGTTGGTTAATTTCTTCAAAGAATTTGTGCATTTTCTCAGACATTGCAACCTCAG
 AACAGGGATGCTTTTTTCAAACCTTAGCAAAATTTGGGAATTTCTCCAGCTTTGAAATTTAGTCCATCCAT
 TGGACGACTTGAAGTCAAGTCAAGTCAAGTCAAGTCAAGTCAAGTCAAGTCAAGTCAAGTCAAGTCAAGT
 GGTCCGAGAGTTTGTGATGCAGGAAGCCAGCAGAGTGATGATGATGACTTCTTATTAATGTGGTGATT
 GAACAGATGATTTGTGATACTGACCCTGAGCTCGGAGGTGCTGTTTCAGTTAATGGGACTTCTTCGTA
 TAATTGATCCAGAGAACATGTTGGCTACAATAAACTGAAAAGAGTGAGTTCTTAAATTTCTTCTA
 CAACCATGATGCATGTTCTCACTGCTCCACTTTTGACCAATACGTCAGAAAGACAAATGCGAGAAAGAT
 AATATGCTTGGATCTAACACAACCAACACAATTTGCCCTGATAATTATCAACAGCACAGCTGCTTGCT
 TAATTTTAGAGTTACTCACATTTTGTGTGAACATCACACATACCACATAAAAACTACATCATGAACAA
 GGACTTGCTAAGAAGAGTCTTGGTGTGATGAATTCAAAGCACACTTTTCTGGCCTTGTGTGCTCTTCGC
 TTTATGAGGCGAATAATTGGCCTGAAAGATGAATTTTATAATCGTTACATACCAAGGAAATCTTTTTG
 AGCCAGTTATAAATGCCCTTTTGGATAATGGAACTCGGTACAATCTTTTAAATTCAGCTGTTATTGAATT
 GTTTGAATTTATAAGAGTGGAAGATATCAAGTCTCTTACTGCACATATAGTTGAAAACCTTTTATAAGCA
 CTTGAATCGATTGAATATGTTTCAGACATTCAAAGGATTGAAGACTAAATATGAACAAGAAAAAGACAGAC
 AAAATCAGAACTGAACAGTGTACCATCTATATTGCGTAGTAAACCGATTTTCGAGAGATGCAAAAAGCCTT
 AGAAGAGGATGAAGAAATGTGGTTAATGAAGATGATGATGAAGAAGGAAAGGCAGTCATAACACCAGTT
 GAAAAATCTAAGACTGAAGATGATTTTCCAGATAGTTATGAAAAATTTATGGAACTAAAAAGCAAAAG
 AAAGTGAAGACAAAGAAAACCTTCCAAAAGGGCATCATCTGGTGGCTTCAAATTTACTTTCTCCATT
 CCCCAGTGCTACTAATGGAACAAACAGTACAAACAGTAAAGTCTGTAGTGAGTCAGACAACACCAGCAAGT
 TCTAATGTGGCCTTCCAAAACATAAGCCTGGCTACATCAGTGACAGCCACAAAGGAAATTTGGTTG
 GCTTGGTAGACTATCCAGATGATGAAGAGGAAGATGAGGAAGAAGAAATCATCCCCTAGGAAAAGACCTCG
 CCTGGGCTCC

AC**CGGT**ACGCGGCCGCTCGAG - GFP Tag - GTTAA

Protein Sequence: >MG210812 representing NM_134034
Red=Cloning site Green=Tags(s)

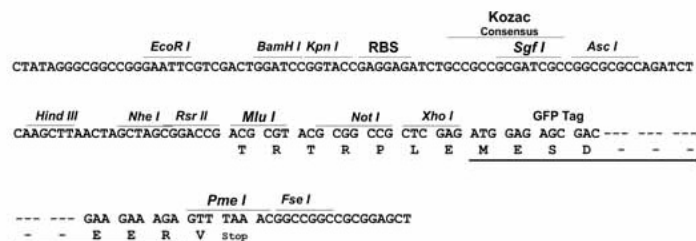
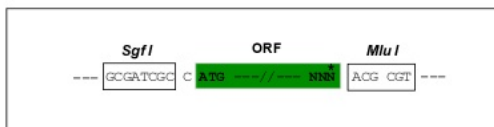
```
MSDTRRRVKVYTLNEDRQWDDRGTGHVSSSTYVEELKGMSLLVRAESDGSLLLESKINPNTAYQKQDQTLI
VWSEAEYDLALSFQEKAGCDEIWEKICQVQKDPVSVEVTQDLIDESEERFEEMPETSHLIDLPTCELS
KLEEIADLVTSVLSPIRREKLALALENEGYIKKLLQLFQACENLENTEGLHHLYEIIRGILFLNKATLF
EVMFSDECIMDVVGCLEYPALAQPKRHREFLTKAKFKEVIPIITDSELRQKIHQTYRVQYIQDIILPTP
SVFEENFLSTLTSFIFFNKVEIVSMLQEDEKFLSEVFAQLTDEATDDDKRRELVNFFKEFCAFSQTLPQ
NRDAFFKTLAKLILPALEIVMGVDDLQVRSAAATDIFSYLVEFSPSMVREFVMQEAQQSDDVLLINVVI
EQMICDTPDELGGAVQLMGLLRTLIDPENMLATTNKTEKSEFLNFFYNHCHMHLTAPLLTNTSEDKCEKD
NMLGSNTTNTICPDNYQTAQLLALILELLTFCVEHHTYHIKKNYIMNKDLLRRVLLMNSKHTFLALCALR
FMRRIIIGLKDEFYNYITKGNLFEPVINALLDNGTRYNLLNSAVIELFEFIRVEDIKSLTAHIVENFYKA
LESIEYVQTFKGLKTKYEQEKDRQNQKLSVPSILRSNRFRRDAKALEEDEEMWFNEDDDEEGKAVITPV
EKSKTEDDFPDSYEKFMETKKAKESEDKENLPKRASSGGFKFTFSHSPSATNGTNSTNSKSVVSQTTPAS
SNVASSKTTSLATSVTATKGNLVGLVDYPDDEEEDEEEESSPRKRPRLGS
```

TRTRPLE - GFP Tag - V

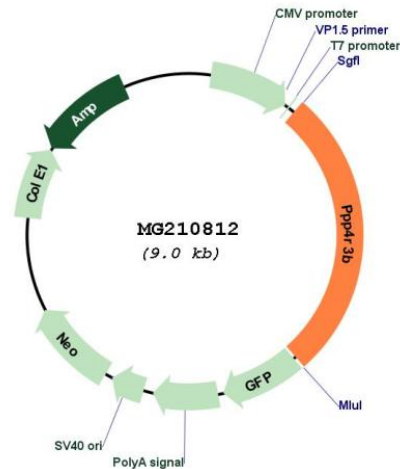
Restriction Sites: Sgfl-MluI

Cloning Scheme:

Cloning sites used for ORF Shutting:



Plasmid Map:



ACCN: NM_134034

ORF Size: 2460 bp

OTI Disclaimer: The molecular sequence of this clone aligns with the gene accession number as a point of reference only. However, individual transcript sequences of the same gene can differ through naturally occurring variations (e.g. polymorphisms), each with its own valid existence. This clone is substantially in agreement with the reference, but a complete review of all prevailing variants is recommended prior to use. [More info](#)

OTI Annotation: This clone was engineered to express the complete ORF with an expression tag. Expression varies depending on the nature of the gene.

Components: The ORF clone is ion-exchange column purified and shipped in a 2D barcoded Matrix tube containing 10ug of transfection-ready, dried plasmid DNA (reconstitute with 100 ul of water).

Reconstitution Method:

1. Centrifuge at 5,000xg for 5min.
2. Carefully open the tube and add 100ul of sterile water to dissolve the DNA.
3. Close the tube and incubate for 10 minutes at room temperature.
4. Briefly vortex the tube and then do a quick spin (less than 5000xg) to concentrate the liquid at the bottom.
5. Store the suspended plasmid at -20°C. The DNA is stable for at least one year from date of shipping when stored at -20°C.

RefSeq: [NM_134034.1](#), [NP_598795.1](#)

RefSeq Size: 3370 bp

RefSeq ORF: 2463 bp

Locus ID: 104570

UniProt ID: [Q922R5](#)

Cytogenetics: 11 A3.3

Gene Summary: Regulatory subunit of serine/threonine-protein phosphatase 4 (PP4). May regulate the activity of PPP4C at centrosomal microtubule organizing centers (By similarity).[UniProtKB/Swiss-Prot Function]