

Product datasheet for **MG210771**

Arpp21 (BC053001) Mouse Tagged ORF Clone

Product data:

Product Type:	Expression Plasmids
Product Name:	Arpp21 (BC053001) Mouse Tagged ORF Clone
Tag:	TurboGFP
Symbol:	Arpp21
Synonyms:	ARPP-21, Tarpp
Mammalian Cell Selection:	Neomycin
Vector:	pCMV6-AC-GFP (PS100010)
E. coli Selection:	Ampicillin (100 ug/mL)



[View online »](#)

ORF Nucleotide Sequence:

>MG210771 representing BC053001
 Red=Cloning site Blue=ORF Green=Tags(s)

TTTTGTAATACGACTCACTATAGGGCGGCCGGAATTCGTCGACTGGATCCGGTACCGAGGAGATCTGCC
 GCC**GCGATCGCC**

ATGTCGTGAGCAAGGAGGACTGACTCCGACCATACTGGAAGAAGGGCAGACGGAGCCAGAGTCTGCCCCAG
 AAAATGGCATCCTCAAGTCAGAAAGTCTGGATGAGGAGGAGAAGCTGGAAGTGCAGCGGCCGACTGGCGGC
 TCAGAACCAAGAGAGGAGAAAAATCCAAGTCAGGAGCAGGCAAAGGGAAGCTGACCAGAAAGTCTTGCTGTC
 TGTGAAGAGTCTTCAGCTAGATCTGGAGGGGAAAGTCAACCAGGATCAGGAATCAATTCACCTACAGCTTT
 CCAGTTTTCCCAGCCTGCAAGAGGAGGATAAATCTAGGAAGGATGATTCTGAGAGAGAAAAAGAAAAGGA
 TAAGAACAGAGAGAACTCTCTGAGAGACCAAGATCAGAATGTTATCAAAAGATTGCAGCCAAGAATAC
 ACAGATTCTACAGGCATAGACTTACATGGGTTTCTAATTAACACGCTGAAGAACAATTCAGGGACAGGA
 TGATACTCTTGAAAATGGAGCAGGAAATGATTGATTTTCATTGCTGACAGCAATAACCACTATAAAAAAGTT
 CCCCAGATGTATCCTATCAAAGGATGCTGGTCCATCGGGTGGCAGCGTACTTTGGATTGGACCACAAC
 GTGGATCAAAGTGGAAAATCTGTATCAACAAGACCAGCAGCACCAGGATACCAAGAGCAAAGGTTTTT
 GTGAACATTTAAAAGATGAAAAAGTGAAGAATCCCAGAAGCGGTTTATCTTGAAGCGAGATAACTCTAG
 TATTGATAAAGAAGACAATCAGTCAGTTTGTCTCACAGGAAAGCCTATTTTTGGACAACAGTAGGCTCCAG
 GAAGACATGCACATATGCAATGAGACCTATAAGAAAAGACAGCTCTTTCGGGCTCACCGAGACAGCTCAG
 GAAGAAGTCCGGGAGCCGGCAGAGCAGCTCAGAGACTGAGCTCAGGTGGCCAGACCACCAGCGGGCTTG
 GAGCAGCACAGATTCGGACAGTTCCAACCGCAATCTGAAGCCCACCATGACCAAGACGGCAAGTTTTGGG
 GGCATCACGGTGTGACCAGGGGCGACAGCAGTCCAGTACCAGGAGTGTGGGAAACTGTCCAAAACAG
 GTTCTGAGTCTTCCAGCAGTGGGGCTCCTCAGGATCACTGTCCCGCACCCACCCACAGAGCAGGCCCT
 GACCTCTAGCGTGGCAGCTGGTTCTCTGGCTGTATGGCCTATTACAGAGAATGGAATGGGAGGCCAGGTT
 CCTCCCAGCAGCACCAGCTACATCCTCCTCCACTTGAAAGTGGCAGTGGCATCCCACCCGGAAGCATCC
 TTCTTAATCCACACACAGGTGAGCCCTTTGTGAACCCGGATGGAACGCCTGCGATATAACAACCTCCCGG
 AAGTCAGCAGACTGCGTGGCACTGTTGGTGGGAGCCAGCAACCTCCACAGCAGCAACCTTCGCT
 CAGCCTCAGCAGCAGGTCCAGGCATCACAGCCCCAGATGGCAGGGCCACTGGTCACTCAGTCTGTCCAGA
 GCCTGCAGCCATCTTCCAGTCTGTGCAATATCCAGCGGTCTCTTTTCTCCCAGCATCTCCTGCCTAT
 GTCGCCAACGCAGCACTTCCCCTTGAGAGAAGAACTGGCTGCCAGTTACGCCAGCTGAGCATGAGCCGG
 CAGTCTCGGGAGACTCCTGAACCTCCCTCTGGTACAGTCTACCCAGCCTCTCTCCTGCCACAAACGG
 CTCAGCCACAGAGTTATGTCATCACTTCTGCAGGCCAGCAGCTCTACAGGGGGCTTCTCGGACTCTGG
 CCCGCCATCTCCCAGCAGGTCTGTCAGGCCCGCCCTCTCCCAGGGATTTGTACAGCAGCCTCCACCT
 GCACAGATGTCCGTCTATACTACCCATCTGGTCACTACCTACCTCAACCTCACAGCAGTACCGACCCC
 TCGCCTCAGTCCAGTACAGTGTGTCAGCGGAGTCAGCAAAACCACAGACCACACAGCAAGCAGGTTACCA
 GCCAGTCTTGTCTGGTCAAGCAGGCTTCCAAGGCATGATGGGAGTACAGCAGTACAGCGCACAGCCAGGTT
 GTGATGAGCAGTACAGCAAGGAGCCCGGTGCATGGTGTGATGGTCTCCTACCCAACCATGTCTTCTTATC
 AGGTGCCAATGACCAAGGCTCTCAAGCAGTGGCCAGCAGACATACCAACCACCAATCATGCTGCCAG
 TCAGGCAGGCCAAGGGTCACTCCCAGCCACCGGAATGCCTGTGTACTGTAAAGTCAACCGTCAACCCGCA
 CAGAACAACCTAAGGTTGATGGGTCCACACTGCCCTCCAGCAGGTTCTGTGTATGTCCGCTAGTTGCA
 GAACAACCTGTGGAACGTGAGCAACGCAGGCTGGCAGGTCAGTTTC

ACGCGTACGCGGCCGCTCGAG – GFP Tag – GTTTAA

Protein Sequence: >MG210771 representing BC053001
 Red=Cloning site Green=Tags(s)

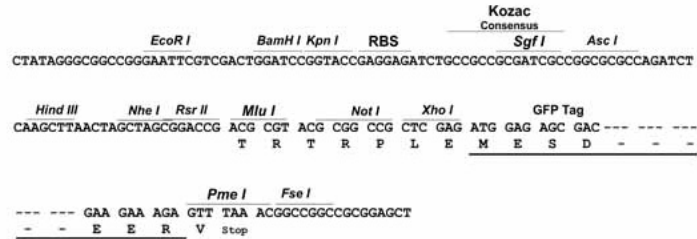
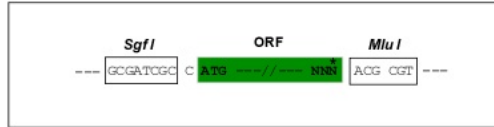
```
MSEQGGLTPTILEEGQTEPESAPENGILKSESLDEEEKLELQRRLAAQNQERRKSKSGAGKGLTRSLAV
CEESSARSGGESHQDQESIHLQLSSFPSLQEEDKSRKDDSEREKEKDKNREKLSERP KIRMLSKDCSQEY
TDSTGIDLHGFLINTLKNNRDRMILLKMEQEMIDFIADSNNHYYKFPQMSSYQRMVHRVAAYFGLDHN
VDQTGKSVIINKTSSTRIPEQRFCEHLKDEKSEESQKRFILKRDNSSIDKEDNQSVCSQESLFLDNSRLQ
EDMHICNETYKKRQLFRAHRDSSGRTSGSRQSSSETEL RWPDHQRAWSSSTDSDSSNRNLKPTMTKTASFG
GITVLTRGDSTSSTRSAGKLSKTGSESSSSAGSSGSLSRTHPQSTALTSSVAAGSPGCMAYSENGMGGQV
PPSSTSYILLPLESATGIPPGSILLNPHTGQPFVNPDGTPAIYNPPGSQQTLRGTVGGQPQQPPQQPSP
QPQQVQASQPQMAGPLVTQSVQSLQPSSQSVQYPAVSFPPQHLLPMSPTQHFPLREELAAQFSQLSMSR
QSSGDTPEPPSGTVYPASLLPQTAQPQSYVITSAGQQLSTGGFSDSGPPI SQVLQAPPSQGFVQQPPP
AQMSVYYYPSGQYPTSTSQQYRPLASVQYSAQRSQQIPQT TQQAGYQPVLSGQQGFQGMVGQQSAHSQG
VMSSQQGAPVHGVMSYPTMSSYQVPMTQGSQAVPQQTYQPPIMLPSQAGQGSLPATGMPVYCNVTPPNP
QNNLRLMGPHCPSSSTVPVMSASCRTNCGNVS NAGWQVKF
```

TRTRPLE - GFP Tag - V

Restriction Sites: Sgfl-Mlul

Cloning Scheme:

Cloning sites used for ORF Shutting:



ACCN: BC053001

ORF Size: 2429 bp

OTI Disclaimer: The molecular sequence of this clone aligns with the gene accession number as a point of reference only. However, individual transcript sequences of the same gene can differ through naturally occurring variations (e.g. polymorphisms), each with its own valid existence. This clone is substantially in agreement with the reference, but a complete review of all prevailing variants is recommended prior to use. [More info](#)

OTI Annotation: This clone was engineered to express the complete ORF with an expression tag. Expression varies depending on the nature of the gene.

Components: The ORF clone is ion-exchange column purified and shipped in a 2D barcoded Matrix tube containing 10ug of transfection-ready, dried plasmid DNA (reconstitute with 100 ul of water).

Reconstitution Method:

1. Centrifuge at 5,000xg for 5min.
2. Carefully open the tube and add 100ul of sterile water to dissolve the DNA.
3. Close the tube and incubate for 10 minutes at room temperature.
4. Briefly vortex the tube and then do a quick spin (less than 5000xg) to concentrate the liquid at the bottom.
5. Store the suspended plasmid at -20°C. The DNA is stable for at least one year from date of shipping when stored at -20°C.

RefSeq: [BC053001](#), [AAH53001](#)

RefSeq Size: 3000 bp

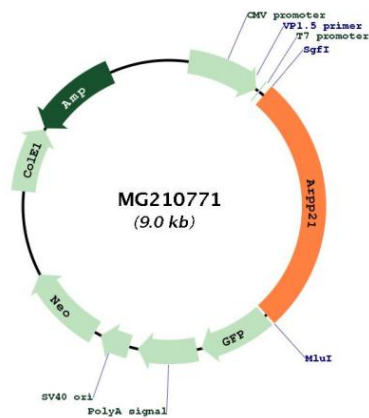
RefSeq ORF: 2429 bp

Locus ID: 74100

Cytogenetics: 9 62.46 cM

Gene Summary: Isoform 2 may act as a competitive inhibitor of calmodulin-dependent enzymes such as calcineurin in neurons.[UniProtKB/Swiss-Prot Function]

Product images:



Circular map for MG210771