

Product datasheet for **MG210753**

Pcdhgb1 (BC098367) Mouse Tagged ORF Clone

Product data:

Product Type:	Expression Plasmids
Product Name:	Pcdhgb1 (BC098367) Mouse Tagged ORF Clone
Tag:	TurboGFP
Symbol:	Pcdhgb1
Mammalian Cell Selection:	Neomycin
Vector:	pCMV6-AC-GFP (PS100010)
E. coli Selection:	Ampicillin (100 ug/mL)



[View online »](#)

ORF Nucleotide Sequence:

>MG210753 representing BC098367
 Red=Cloning site Blue=ORF Green=Tags(s)

TTTTGTAATACGACTCACTATAGGGCGGCCGGGAATTCGTCGACTGGATCCGGTACCGAGGAGATCTGCC
 GCC**CGGATCGCC**

ATGAAAAATCAGGTATTGCTTCACTTCCTGGTGCCTTTGTCTGCGGCGCCCTCTCCAGCCATCCACT
 ACTCCATTCCGGAGGAGCTAGCCAAGGGCTCTCTAGTGGGAGTCTCGCCAAGGATCTGGGACTCAGTAT
 CCAAGAATTGCCAGCTCGAAAAGTGAAGTTGCAGAGGATTATTTAGCGTTAGTGCAGAACTGCTGCTG
 GAAACCCCTCTGGACAGGGAGCATCAGAGCTCCCATCACTTAATACTGACCGCCATGGATGGTGGAGACC
 CGCCCCTAAGCAGCACCACCCAGGTCTGGATCAAAGTCACCGACGCCAATGACAATGCTCCAGTGTTCAG
 CCAGGACACTTACAAAGTTAGCCTTCGTGAAAACATAACCCAGGAACGTTAGTGTGCAAGTGACAGCT
 TCTGATCAGGATGAGAGTATTACGGAGAGATCACCTATGCCTTCCTTAATGCCCGCAAGTACTAACC
 TTGTCTTCAATCTCAATCCAAACTACTGGAGCTATCACAATAATGGTACATTGGATTTTGAAGAAAAGAA
 TAGATACACATTGGGTGTAGAAGCCAAGGACGGAGGGGTGCACACGGCTCACTGTAATGTTTCAGATCGAA
 ATTCCTTGATGACAACGACAATGCCCCAGAGGTGACATTCATGTCTTTTCTAACCAAGTTCCAGAGGATT
 CAGTCCTTGAACAGTAATCGCCCTCATTAAAGTTCGAGACAAAGATTCTGGACAAAATGGTTTGGTGGC
 ATGCCATATTCAGGAAGAACTTCCCTTCAAATTACAACCCACCTCCAAGAATTATTACAAGTTAGTGATT
 GACAAGGCCCTAAACCGAGAACAGACCCAGAGTACAACGTCCTACTATCACAGCTACTGACAGTGGCAAGC
 CCTCGCTTTCCTCAAGACATGTGTTACTGTACACATCACAGATATCAACGACAATGCACCGGTTTTTCA
 CCAGGCCCTCCTACTTGGTCCACGTGGCTGAGAACAACCCACCTGGAGCCTCTATTGCTCAAGTACGCGCC
 TCAGATCCGGATTTGGGATCCAATGGCCTCATTTCCTACTCCATCATAGCCAGCGACCTAGAGCCAAGGG
 CACTATCGTCCTTCGTGTCCGTGAACCAGGACAGTGGAGTGGTGTTCGCGCAGCGCGCCTTCGACCACGA
 GCAGCTGCGTTCCTTCCAGCTGACACTGCAGCGCGGGACCACGGATCGCCACACTCAGTGCCAATGTG
 AGCATGCGCGTGTGGTGGGTGACCGCAACGACACGCACCACGCGTGCTGTATCCACACTTGAGCCCG
 ACGGCTCTGCGCTCTTCGACATGGTGCCGCGCGCTGCCGAGCCGGATACCTGGTACCAAGGTGGTGGC
 TGTGGACGCAGACTCCGGACACAATGCCTGGCTGTCTTACCACGTGCTGCAGGCCAGCGATCCCGGGCTC
 TTCAGCCTGGGACTGCGCACAGGCGAGGTGCGCACAGCGCGTGCCTGGGAGACAGGGACTCAGCGCGGC
 AGCGCCTTCTGGTCGCTGTGCGTGATGGTGGACAGCCACCCTCTCCGCTACAGCCACGCTGCACCTCAT
 CTTGCTGACAGCCTGCAGGAGGTCTGCCAGACCTCAGCGATGACCCTCTACCATCTGACCCTCAGAGT
 GAGCTTCAAGTTTACCTGGTGGTGGCCTTGGCCCTGATCTCAGTGTCTTCTCCTGGCGGTGATTCTGG
 CTATTGCCCTGCGTCTGAGACACTCCTCCAGATCAGCTGCCTGGGGCTGCTTTCAGCCTGGCCTCAGCCT
 GAAGTCTCAACCTGTGGTTCCTCCCAACTACAATGAGGGGACATTACCCTATTCTATAATCTCTGCGTT
 GCTTACATTCTACGACTATGGCAGGGTTAATTTTACCACGTGGCACCAGAGGTTGCTCCCCCTCAGG
 ATCTCCTGTGCGATGATCCTTCTGTGGTGTATGTGGCAATAATGAAGATCCCCAAGTCTCGGACGACTC
 TGCTTTCAGCAAGCCCCGCCAACACTGACTGGCGTTTCTCTCAAGCCCAGAGACCCGGCAGGCGGA
 TCCCAAAATGGTGTGAAACTGGCACCTGGCCCAACAACAGTTTGATACAGAGATGCTGCAAGCCATGA
 TCTTGGCCTCTGCCAGCGAAGCTGTGTGAGGAGCTCTACCCTGGGAGGGGGCGCTGGCACCATGGGTCT
 GAGCGCTCGATACGGACCCAGTTTACCCTGCAGCACGTGCCTGACTACCGCCAGAACGTGTACATCCCT
 GGCAGCAATGCCACGCTGACCAATGCCGCTGGCAACGAGATGGCAAGGCTCCAGCAGGTGTAATGGCA
 ACAAGAAGAAATCGGGCAAGAAAGAGAAGAAG

AG**CGGACCG**ACGCGTACGCGGCCGCTCGAG - GFP Tag - GTTTAA

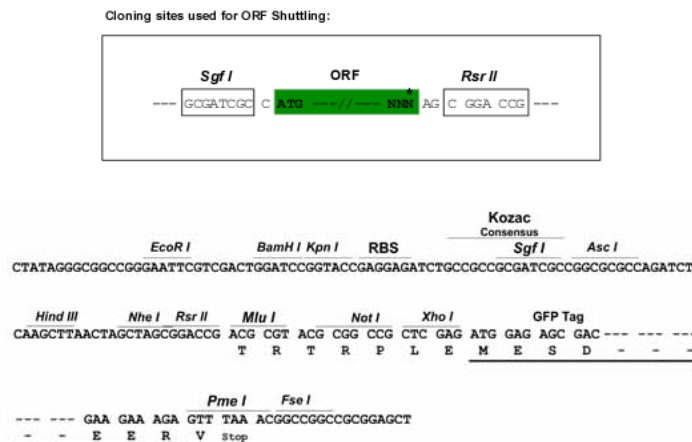
Protein Sequence: >MG210753 representing BC098367
Red=Cloning site Green=Tags(s)

```
MENQVLLHFLVPLFCGALSQPIHYSIPEELAKGSLVGLAKDLGLSIQELPARKLRVAEDYFVSVSAELLL
ETPLDREHQSSHHLLILTAMDGGDPPLSSTTQVWIKVTDANDNAPVFSQDTYKVSLENIPPGLVLQVTA
SDQDESIHGEITYAFLNAPASTNLVFNLPNTGAIITNGTLDFFEEKNRYTLGVEAKDGGVHTAHCNVQIE
ILDNDNDNAPEVTFMFSFNQVPEDSVLGTVIALIKVRDKDSGQNGLVACHIQEELPFKLQPTSKNYKLV
DKALNREQTPEYNVTITATDSGKPSLSSKTCVTVHITDINDNAPVFHQASYLVHVAENPPGASIAQVSA
SDPDLGNSGLISYSIIASDLEPRALSSFVSNQDSGVVFAQRAFDHEQLRSFQLTLQARDHGSPTLSANV
SMRVLVGDNRNDNAPRVL YPTLEPDGSALFDMVPRAAEPGYLVTKVVAVDADSGHNAWLSYHVLQASDPGL
FSLGLRTGEVRTARALGDRDSARQRLLVAVRDGGQPPLSATATLHLIFADSLQEVLPDLSDDPLSPDQS
ELQFYLVVALALISVLFLLAVILAIALRLRHSSRSAAWGCFQPGLSLKSQPVVPPNYNEGTLPYSYNLCV
ASHSTTMAGFNHVAPEVAPPQDLLCDDPSVVVCGNNEPQVSDSAFQQAPPNTDWRFSQAQRPGTSG
SQNGDEGTWPNNQFDTEMLQAMILASASEAADGSSTLGGGAGTMGLSARYGPQFTLQHPVDPYRQNVYIP
GSNATLTNAAGKRDGKAPAGGNGNKKKSGKKEKK
```

SGPTRRRLE - GFP Tag - V

Restriction Sites: SgfI-RsrII

Cloning Scheme:



ACCN: BC098367

ORF Size: 2412 bp

OTI Disclaimer: The molecular sequence of this clone aligns with the gene accession number as a point of reference only. However, individual transcript sequences of the same gene can differ through naturally occurring variations (e.g. polymorphisms), each with its own valid existence. This clone is substantially in agreement with the reference, but a complete review of all prevailing variants is recommended prior to use. [More info](#)

OTI Annotation: This clone was engineered to express the complete ORF with an expression tag. Expression varies depending on the nature of the gene.

Components: The ORF clone is ion-exchange column purified and shipped in a 2D barcoded Matrix tube containing 10ug of transfection-ready, dried plasmid DNA (reconstitute with 100 ul of water).

Reconstitution Method:

1. Centrifuge at 5,000xg for 5min.
2. Carefully open the tube and add 100ul of sterile water to dissolve the DNA.
3. Close the tube and incubate for 10 minutes at room temperature.
4. Briefly vortex the tube and then do a quick spin (less than 5000xg) to concentrate the liquid at the bottom.
5. Store the suspended plasmid at -20°C. The DNA is stable for at least one year from date of shipping when stored at -20°C.

RefSeq: [BC098367.1](#)

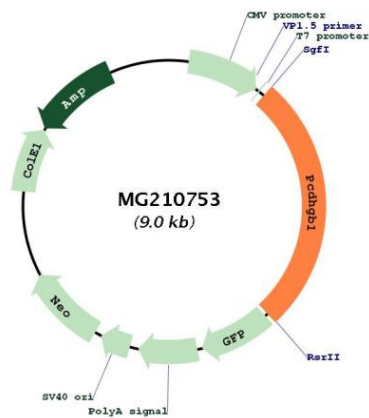
RefSeq Size: 4421 bp

RefSeq ORF: 2414 bp

Locus ID: 93699

Cytogenetics: 18 B3

Product images:



Circular map for MG210753