

Product datasheet for **MG210747**

Eif3b (NM_133916) Mouse Tagged ORF Clone

Product data:

| | |
|---------------------------|--|
| Product Type: | Expression Plasmids |
| Product Name: | Eif3b (NM_133916) Mouse Tagged ORF Clone |
| Tag: | TurboGFP |
| Symbol: | Eif3b |
| Synonyms: | AL033316; AL033334; AL033369; AW208965; D5Wsu45e; EIF3-ETA; EIF3-P110; EIF3-P116; Eif3s9; PRT1 |
| Mammalian Cell Selection: | Neomycin |
| Vector: | pCMV6-AC-GFP (PS100010) |
| E. coli Selection: | Ampicillin (100 ug/mL) |



[View online »](#)

ORF Nucleotide Sequence:

>MG210747 representing NM_133916
 Red=Cloning site Blue=ORF Green=Tags(s)

TTTTGTAATACGACTCACTATAGGGCGGCCGGGAATTCGTCGACTGGATCCGGTACCGAGGAGATCTGCC
 GCC**CGCATCGCC**

ATGCAGGACGCTGAGAACGTGGCGGTGCCCGAGGCGGCCGAGGAGCGGGCTGAGCCCGCAGGCAGCAGC
 CGGCCTCCGAGTCGCCCGACGACGAGGCGGCAGGGTCTGGGGGTCCGAAAGTGGGGCAGACGGAAGA
 CGCCGAAGAAGACGCCGAGGCCGACCGAGCCGAAAGTGAAGGCAAGCCGCGGCCCAATCCGAAGAG
 GAAACGGCGACGAGTCCGGCCGCTCGCCACGCCGAGTCGGCGGAGCGGTCCCGTCGCAGGAGCCCT
 CTGCTCCCGGGAAGGCAGAGGCCGTTGGCGAGCAGGCCCGGGGGCACCCCTCGGCTGGAGCGGAGGAGGA
 GGGCGGGTCTGATGGGAGCGGGCTGAGGCGGAGCCGCGGGCTCTGGAGAACGGAGAGGCAGATGAGCCC
 TCCTTCAGCGACCCCGAGGATTTCTGACGACGTCGAGCGAGGAAGAAGTACTTGGTGATGTAACAAG
 ATCGGCCTCAGGAAGCGGACGGGATTGACTCGGTGATTGTTGAGACAACGTCCCTCAGGTGGGGCCAGA
 CCGACTTGAGAACTCAAAAATGTCATCCACAAGATCTTCTCAAGTTTGGGAAAATCATAAATGACTAT
 TACCCTGAGGAGGACGGAAGACGAAAGGTACATCTTCTGGAGTACGTTCTCCCGCCATGCTGTGG
 ATGCTGTGAAAAACGCCGATGGCTACAAGCTGGACAAGCAGCACACGTTCCGGGTCAACCTTCCACCGA
 CTTTGACAAGTACATGACGATCAGCGATGAGTGGGACATTCAGAGAAGCAGCCTTTCAAAGACCTGGGC
 AATTTGCGTTACTGGCTGGAAGAGGCAGAGTGTAGAGTACAGTACAGTGTGATTTTTGAGAGCGGAGACC
 GGACGTCCATCTTCTGGAATGACGTCAAGGACCCAGTCTCAATTGAAGAAAGAGCGAGATGGACAGAGAC
 GTACGTGCGTGGTCCCCTAAGGGTACCTACCTGGCCACTTCCATCAGCGGGGTATCGCCCTCTGGGGA
 GGGGACAAGTTCAAGCAGATTCAAGGTTCAAGGTTCAAGGTTCAAGGTTCAAGGTTCAAGGTTCAAGGTT
 CAATCCTCACGGGCCATAAGAAGAGAGGTTTTCACTGCGAAAGCTCAGCCACTGGCCCATCTTCAAGTGG
 AGCCATGATGGCAAATCTTTGCAAGAATGACCCTGGATACTCTTAGCATCTATGAAACACCTTCCATGG
 GCCTTTTGGACAAGAAGAGTTTGAAGATCTCTGGAATTAAGACTTTTCTTGGTCTCCGGGTGGTAACAT
 CATTGCTTTTTGGGTGCCTGAAGACAAAGATATCCAGCCAGGGTGACCCTGATGCAGCTCCCACCAGA
 CAGGAGATCCGAGTGAGGAATTTGTTCAATGTGGTTGATTGCAAGCTGCACTGGCAGAAAAATGGAGATT
 ACCTATGTGTAAAAGTGGACAGGACTCCGAAAGGCACACAGGGAGTTGTCACAAAATTTGAAATATTCCG
 AATGAGGGAGAAGCAGGTACCTGTTGATGTTGTTGAGATGAAAGAAACCATCATAGCCTTTGCCTGGGAA
 CCCAATGGCAGTAAGTTTGCCGTCTTCAATGGTGAGGCCCTCGGATCTGTCTCCTTCTACCACGTGA
 AGAGCAACGGGAAGATTGAACTCATCAAGATGTTTGACAAGCAGCAAGCCAACACCATCTTCTGGAGTCC
 CCAGGGGCAGTTCGTGGTGTGGCCGGGCTGAGGAGCATGAACGGTGCCTTGGCGTTTGTGACACTTCA
 GACTGCACCGTCAAGCAATTGCAGAGCACTACATGGCCTCCGATGTTGAATGGGACCAACTGGCCGCT
 ACGTGGTTACCTCTGTGTCGTGGTGGAGCCACAAGGTGGACAAATGCTTACTGGCTGTGGACCTTCCAAGG
 TCGCCTTCTGCAGAAGAACAACAAGGACCGCTTCTGCCAGCTGCTCTGGAGACCAAGGCCCAACACTC
 CTCAGCCAGGATCAGATAAAGCAAATTAAGGATCTGAAGAAGTACTCCAAGATCTTTGAGCAGAAGG
 ATCGCTTGAGCCAGTCCAAGCTTCAAAGGAACGGTGGAAAGAAGGCGGACCATGATGGAGGACTCCG
 GCAATACCGGAAAATGGCCAGGAACCTACATGAAGCAGAAGAACGAGCGTCTAGAGCTACGAGGAGGG
 GTGGACACTGACGAGCTGGACAGCAACGTGGATGACTGGGAGGAAGAGACCATTGAGTTTTTTGTACCCG
 AGGAAGTCATTCTCTGGGAAGTCAGGAG

ACCGTACGCGGCCGCTCGAG - GFP Tag - GTTTAA

Protein Sequence: >MG210747 representing NM_133916
 Red=Cloning site Green=Tags(s)

```

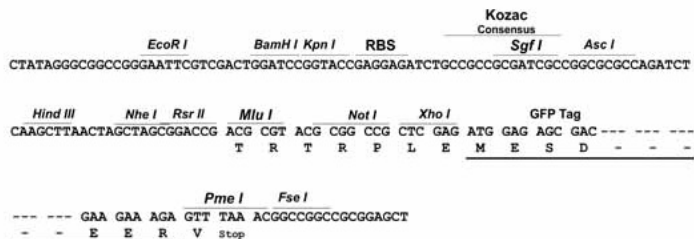
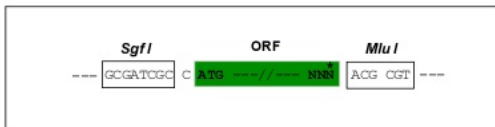
MQDAENVAVPEAAEERAEPARQQPASESPPTDEAAGSGGSEVQGTEDAEEAEAGPEPEVRAKPAAQSEE
ETATSPAASPTPQSAERSPSQEPSAPGKAEAVGEQARGHPSAGAE EGGSDGSAAEAEPRALENGEA DEP
SFSDPEDFVDDVSEEELLGDV LKDRPQEADGIDSIVVDNVPQVGPDRLEK LKNVIHKIFSKFGKIINDY
YPEEDGKTKGYIFLEYASPAHAVDAVKNADGYKLDKQHTFRVNLFTDFDKYMTISDEWDIPEKQPFKDLG
NLR YWLEEAECRDQYSVIFESGDRTSIFWNDVKDPVSI EERARWTETYVRWSPKGTYLATFHQRGIALWG
GDKFKQIQRF SHQVQLIDFSPCERYLVTF SPLMDTQDDPQAI I IWDILTGHKKRGFHCESSAHWP IFKW
SHDGKFFARMTLDTLSIYETPSMGLLDKSLKISG IKDFSWSPGGNIIAFWVPEDKDIPARVTLMLQLPTR
QEIRVRNLFNVVDCKLHWQKNGDYLCVKVDRTPKGTQGVVTNFEIFRMREKQVPVDVEMKETIIAF AWE
PNGSKFAVLHGEAPRISVSFYHVKSNGKIELIKMFDKQQANTIFWSPQQGFVVLAGLRSMNGALAFV DTS
DCTVMNIAEHYMASDVEWDPTGRYVVTSVSWWSHKVDNAYWLWTFQGRLLQKNNKDRFCQLLWRPRPPTL
LSQDQIKQIKKDLKKYSKIFEQKDRLSQSKASKELVERRRTMMEDFRQYRKMAQEL YMKQKNERLELRGG
VDTDELDSNVDDWEEETIEFFVTEEVIPLGSQE
  
```

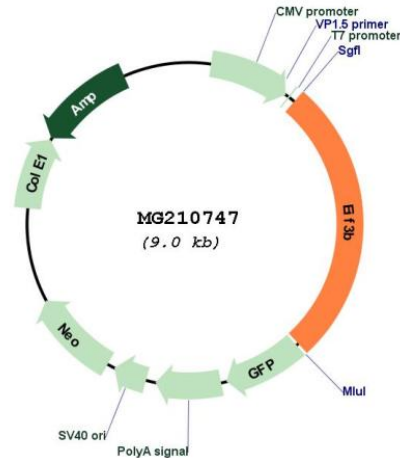
TRTRPLE - GFP Tag - V

Restriction Sites: Sgfl-MluI

Cloning Scheme:

Cloning sites used for ORF Shutting:



Plasmid Map:


ACCN: NM_133916

ORF Size: 2409 bp

OTI Disclaimer: The molecular sequence of this clone aligns with the gene accession number as a point of reference only. However, individual transcript sequences of the same gene can differ through naturally occurring variations (e.g. polymorphisms), each with its own valid existence. This clone is substantially in agreement with the reference, but a complete review of all prevailing variants is recommended prior to use. [More info](#)

OTI Annotation: This clone was engineered to express the complete ORF with an expression tag. Expression varies depending on the nature of the gene.

Components: The ORF clone is ion-exchange column purified and shipped in a 2D barcoded Matrix tube containing 10ug of transfection-ready, dried plasmid DNA (reconstitute with 100 ul of water).

Reconstitution Method:

1. Centrifuge at 5,000xg for 5min.
2. Carefully open the tube and add 100ul of sterile water to dissolve the DNA.
3. Close the tube and incubate for 10 minutes at room temperature.
4. Briefly vortex the tube and then do a quick spin (less than 5000xg) to concentrate the liquid at the bottom.
5. Store the suspended plasmid at -20°C. The DNA is stable for at least one year from date of shipping when stored at -20°C.

RefSeq: [NM_133916.2](#), [NP_598677.1](#)

RefSeq Size: 2966 bp

RefSeq ORF: 2412 bp

Locus ID: 27979

UniProt ID: [Q8JZQ9](#)

Cytogenetics: 5 78.97 cM

Gene Summary:

RNA-binding component of the eukaryotic translation initiation factor 3 (eIF-3) complex, which is required for several steps in the initiation of protein synthesis. The eIF-3 complex associates with the 40S ribosome and facilitates the recruitment of eIF-1, eIF-1A, eIF-2:GTP:methionyl-tRNA_i and eIF-5 to form the 43S pre-initiation complex (43S PIC). The eIF-3 complex stimulates mRNA recruitment to the 43S PIC and scanning of the mRNA for AUG recognition. The eIF-3 complex is also required for disassembly and recycling of post-termination ribosomal complexes and subsequently prevents premature joining of the 40S and 60S ribosomal subunits prior to initiation. The eIF-3 complex specifically targets and initiates translation of a subset of mRNAs involved in cell proliferation, including cell cycling, differentiation and apoptosis, and uses different modes of RNA stem-loop binding to exert either translational activation or repression.[UniProtKB/Swiss-Prot Function]