

Product datasheet for **MG210738**

Tmem63c (NM_172583) Mouse Tagged ORF Clone

Product data:

Product Type:	Expression Plasmids
Product Name:	Tmem63c (NM_172583) Mouse Tagged ORF Clone
Tag:	TurboGFP
Symbol:	Tmem63c
Synonyms:	4932420N09; 9330187M14Rik
Mammalian Cell Selection:	Neomycin
Vector:	pCMV6-AC-GFP (PS100010)
E. coli Selection:	Ampicillin (100 ug/mL)



[View online »](#)

ORF Nucleotide Sequence:

>MG210738 representing NM_172583
 Red=Cloning site Blue=ORF Green=Tags(s)

TTTTGTAATACGACTCACTATAGGGCGGCCGGAATTCGTCGACTGGATCCGGTACCGAGGAGATCTGCC
 GCC**CGGATCGCC**

ATGCTGCTTTCCAGACAGCATGGACCAGAAGTTTCATAACATGACGGTGAATGAGTGCTTCCAGTCGC
 GGAGCACTGTCTCCAGGGCAGCCCTTTGGGGGATCCCACCGTGCTGTAACAACATCATCTTATG
 GGTGTTGTTGTCTGCTTTATTCTTCTCCGAAAGCTGCGTGGGACTACGGGAGGCTGGCACTGCTG
 ATACACAACGACAGCCTGACCTCACTGATCTACGGGGAGCAAAGTGAGAAGTCATCTCCGTGAGAGTTT
 CCTTGGAGGCGGAACGCAGGGACAGGGCTTCTTCTGTTTCAACAGCCTAACCATGAGGGACCG
 GGACCTGATCAACAAATGCGGGGATGATGCGGGAATTTACATCACGTTCCAGTATCACCTCATCATCTTT
 GTGCTCATCTCTGCATCCCTCCCTGGGCATCATTTTGCCTGTTAACTACATTGGAAGTGTCTGGACT
 GGAACAGTCACCTTGGCCGACACCATTGTCAATGTCTACAGAGAGCAAGTTCCTGTGGCTGCATAG
 CCTCTTCGCGTTCTGTACTTCCATCAACCTTGCCTTTCATGGGTCACTACTGCTTGGGATTTGTCCA
 AAGAAGAGCCTCCACTTACAGGACACTGATGATCACCTATGTACCCACTGAAATCCAGGATCCCAGAG
 TCATCAGCAAGCACTTCCATGAGGCCTATCCTGGATGTGTGGTGACCAGAGTCCATTTCTGCTATGATGT
 CAGGAACCTGATTGACTTGGATGATCAAAGCGCCATGCCATGCGGGGACAGGCTCTACTACACGGCCAAG
 GCTAAGAAGACTGGGAAGGTCATGATCAAGACACATCCCTGTTCCCGCCTGTGCTTCTGCAAATGTTGGA
 CCTGCTTCAAGGAGGTAGATGCGGAGCAGTACTACAGTGAAGTGGAGGAGCAGCTGACAGACGAGTTCAA
 TGCTGAGCTTAACTGTCAGTGAAGAGGCTTGACCTGATCTTGTACCTTCCAGGATGCCAGGACA
 GTGAGAGCATCTATGATGATTACAAGTACATCCATTGTTAGACACCCCAAGCAGTCTTCAGTCACGA
 CCATCGTCAAAAACCTACCCTGGAGGGTGTCTCATGCCCCACCCCAAGACATCATCTGGAAGCACCT
 GTCCATCCGCGCTTCAGTTGGTGGACTCGCTTATCGCCATCAATACCTTCTGTTCTTCTCTCTTCT
 TTTCTACCACACCTGCCATCATCATCAACACCATCGACATATAAATGTCAACCCGCCCCATTGAGAAAT
 TGCAGAGCCCAATCGTGACTCAGTTCTTCCCTCTGACTGCTCTGGGCCTTCACTGTGACAATGCCTCT
 GCTGGTCTACTTATCGGCCTTCTAGAGGCCCACTGGACAAGTCAAGTCAAGCACTGATCATAGTGAC
 AAATGCTACATCTTCTGGTGTATGGTGGTCATTCTTCCCTCCATGGGGCTGACCAGTCTGCATGTGT
 TTTTACGATGGCTCTTTGACATCTACTCTTGAACATGCGACCATCAGGTTCCAGTGCCTGTTCTCTCC
 AGACAATGGTGCATTCTCATCAACTACGTGATCACAGCGGCTCTGCTTGGGACAGGCATGGAGCTGATG
 CGCTGGGGTCACTCTGCACATATTGTACCCGCTCTTCTTATCAAATCAGAGCCAGAAAGAGTTCACA
 TCAGAAAGAACCAAGCCACAGATTTCCAGTTTGGACGAGAGTATGCATGGATGTTGAACGCTTTCAGCGT
 GGTGATGGCGTATAGCATCACTTGCCTATCATTGTCCCGTTTGGGCTGCTGTATCTGTGCATGAAGCAC
 ATTACAGACCGCTATAACATGTACTACTCTACGCGCCCAAACTCAACGCGCAGATCCACATGGCCG
 CAGTCTACCAGGCCATTTTGGCCCACTTGGGGCTTCTGATGCTCTTCTTCTCCATCCTGCGAGT
 AGGTTCCCTCCACAGCATCACCTTATTCCATGTCTTCCCTCATCATCTCCGTGGTCATTGCCTTTTCT
 GGTGTTTTTCTGGGAAGCTCCGGATTGCCAACGGTATGAGCAGCCTGAGGAAGAAACAGAGACTGTGT
 TTGATGTGGAACCAAGCAGCACCACCTCCACTCCACCTCCCTTCTGTACGTGGCCACCGTGTACAGGA
 GCCAGAGCTGAACCTGACCCCGCTCCTCCCCAGCCCGGCACACCTATGGCACCATCAACAGCCAGCCA
 GAAGAGGGAGAAGAAGAGAGCGGTCTGAGGGCTTTGCAAGGGAGCTGGACTCAGCCAGTTCAGGAAG
 GGCTGAAATGGAGGGCCAGAGTCAC

ACGCGTACGCGGCCGCTCGAG - GFP Tag - GTTTAA

Protein Sequence: >MG210738 representing NM_172583
Red=Cloning site Green=Tags(s)

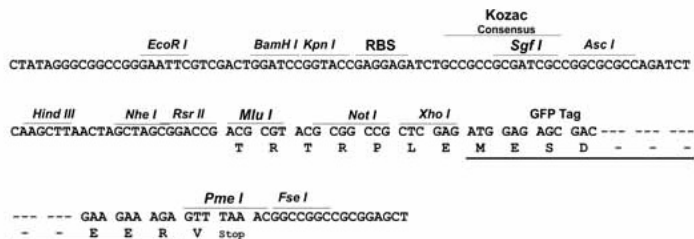
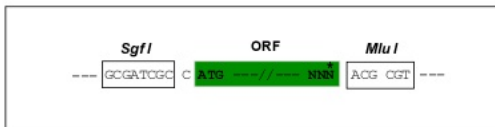
MSAFPDSMDQKFHNMTVNECFQSRSTVLQGQPFGGIPTVLVNLIIILWVFVLLYSFLRKAAWDYGRLL
IHNDLSLSLIYGEQSEKSSPSEVSLEAERRDRGFSSWFNSLTMRDRDLINKCGDARIYITFYHLIIF
VLILCIPSLGIILPVNYIGTVLDWNSHFGRTTIVNVSTESKFLWLHSLFAFLYFLINLAFMGHHCLGFVP
KKSLLHFTRTLMITYVPTEIQDPEIISKHFHEAYPGCVVTRVHFCYDVRNLIDLDDQRRHAMRGRLYYTAK
AKKTGKVMIKTHPCSRFCCKCWCFCKEVDAAEQYSELEEQLTDEFNAELNRVQLKRLDLIFVTFQDART
VRRYDYDYKYIHCGRHPKQSSVTTIVKNYHWRVAHAPHPKDIWKHLSIRRFSSWTRFIAINTFLFFLFF
FLTTPIIINTIDIYVTRPIEKLQSPIVTQFFPSVLLWAFTVTMPLLVLVYSAFLEAHWTRSSQNLIIIVH
KCYIFLVFMVILPSMGLTSLHVFLRWLFDIYYLEHATIRFQCVFLPDNGAFFINYVITAALLGTGMELM
RLGSLCTYCTRLFLSKSEPERVHIRKNQATDFQGREYAWMLNVFSVVMAYSITCPIIVPGLLYLCKMH
ITDRYNYMYSYAPTCLNAQIHMAAVYQAIFAPLLGLFWMLFFSILRVGSLHSITLFSMSSLIIISVVI
GVFLGKLRQAQRYEQPEEETETVFDVEPSSTTSTPTSLLYVATVLQPELNLTPASSPARHTYGTINSQP
EEGEEESGLRGFARELDSAQFQEGLEMEGQSH

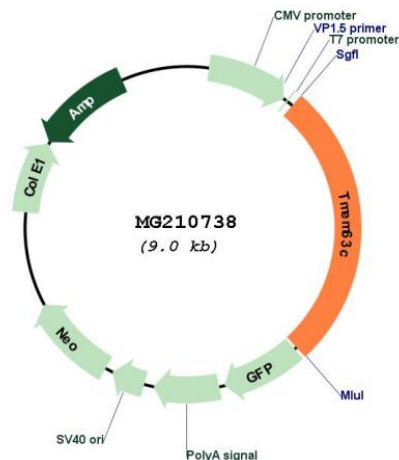
TRTRPLE - GFP Tag - V

Restriction Sites: Sgfl-MluI

Cloning Scheme:

Cloning sites used for ORF Shutting:



Plasmid Map:


ACCN: NM_172583

ORF Size: 2406 bp

OTI Disclaimer: The molecular sequence of this clone aligns with the gene accession number as a point of reference only. However, individual transcript sequences of the same gene can differ through naturally occurring variations (e.g. polymorphisms), each with its own valid existence. This clone is substantially in agreement with the reference, but a complete review of all prevailing variants is recommended prior to use. [More info](#)

OTI Annotation: This clone was engineered to express the complete ORF with an expression tag. Expression varies depending on the nature of the gene.

Components: The ORF clone is ion-exchange column purified and shipped in a 2D barcoded Matrix tube containing 10ug of transfection-ready, dried plasmid DNA (reconstitute with 100 ul of water).

Reconstitution Method:

1. Centrifuge at 5,000xg for 5min.
2. Carefully open the tube and add 100ul of sterile water to dissolve the DNA.
3. Close the tube and incubate for 10 minutes at room temperature.
4. Briefly vortex the tube and then do a quick spin (less than 5000xg) to concentrate the liquid at the bottom.
5. Store the suspended plasmid at -20°C. The DNA is stable for at least one year from date of shipping when stored at -20°C.

RefSeq: [NM_172583.3](#)

RefSeq Size: 3369 bp

RefSeq ORF: 2409 bp

Locus ID: 217733

UniProt ID: [Q8CBX0](#)

Cytogenetics: 12 D2

Gene Summary: Acts as an osmosensitive calcium-permeable cation channel.[UniProtKB/Swiss-Prot Function]