

Product datasheet for **MG210722**

Pcdhb17 (NM_053142) Mouse Tagged ORF Clone

Product data:

Product Type:	Expression Plasmids
Product Name:	Pcdhb17 (NM_053142) Mouse Tagged ORF Clone
Tag:	TurboGFP
Symbol:	Pcdhb17
Synonyms:	mKIAA1621; Pcdhb16; PcdhbQ
Mammalian Cell Selection:	Neomycin
Vector:	pCMV6-AC-GFP (PS100010)
E. coli Selection:	Ampicillin (100 ug/mL)



[View online »](#)

ORF Nucleotide Sequence:

>MG210722 representing NM_053142
 Red=Cloning site Blue=ORF Green=Tags(s)

TTTTGTAATACGACTCACTATAGGGCGGCCGGGAATTCGTCGACTGGATCCGGTACCGAGGAGATCTGCC
 GCC**CGGATCGCC**

ATGGAGACTGCATGGATGTGCAATCTGAGACAAAGGCAAGTCCTGGCTTTCTTTGTTTTGCTGCATGTGT
 CAGGGGCAGGGCAGAAGCTGGGCCCTATTCCATAGAGGAAGAAACAGAGAGGGCTCCTTTGTGGCAAA
 TCTTGGGAAAGATCTGGGGTGGACCTGGCAGAGATATCCAATCGCAGGGCTCGGATCATTTCCTCAAGAA
 AACAAAGAGCATTTCAGCTCAACCTTCAATCTGGAGATCTGCTCATAAATGAGAAAAGCTGGACCGAGAGG
 AGCTATGTGGCCCATTGAGCCGTGTGTCTACACTTCCAAGTGTAAATGGAAAACCTTTAGAGGTATT
 TCAGGCTGAAGTGGGTGATGGACATAAATGACTATTCTCCGGTGTTCAGTGAAGAGAAAATGATACTG
 AGAATACTAGAAAACAGTGTCTGGGAGATACATTTCTTTAAATAATGCTCTGGACTCAGACGTAGCAA
 TCAACAATATCCAGACCTATAGGCTCAGCTCAAACCTCATTTCCTGGTGTAAACCCGAACCCGAGTGA
 TGGCAGGAAGTACCCAGAGCTGGTGTGGAGAAAGAACTGGATCGAGAGGAGAACTGAGCTGAGGTTA
 ACTCTGACAGCTTTGGATGGTGGCGCTCCTCCCGGTCTGGGACGGCACAGGTTCTCATTGAAGTGTGG
 ACATCAACGATAATGCACCCAAGTTTCAGCAGCCAACATACCGAGTGCATAATCCCGAGAACAGTCCAC
 CGGTTCTCTGGTACTCACAGTCTCAGCCAACTGACTTGGACAGTGGAGATTATGGAAAAGTATTGTATGCA
 CTTTCTCAGCCTTCAGAAGATATTAGCAAAACGTTAGAAGTAAACCTGTAAACGGGGAGATTCCGGTAC
 GAAAAGAGGTGGATTTTGAAACTATTCCCTCTTATGAAGTGGATATCAAGGCCACGGATGGGGGAGGTCT
 CTCAGGAAAATGCACGCTGTTACTGAAGTGGTGGACGTGAATGACAATGCCCGAGAAGTGTATCTATCT
 GCTCTTACCAGCCAGTCCCAGAAAACCTCCCGGACGAGGTAGTGTCTTTTTCAGTGTAAAGATCCTG
 ATTCAGCGAACAATGAAAAAATGATTGCCTCCATCGAAGAAGATCTTCCCTTTCTTAAAATCTTCAGG
 GAAGAACCTTTTACACTTTAGTGACCAAGAGACTTGGACAGGGAAGAAAGAGAGAAAATACAACATCACC
 ATCACTGTCTCTGACCTGGGCACACCCAGGCTCACAACCCAGCACACCATAACAGTGCAGGTCTCTGACA
 CCAATGACAACGCCCCCGCCTTCAACCAAACTCATAACCCCTGTTTCGTCGCGGAGAACAACAGCCCGC
 CATGCACATAGGCACCATCAGTGCCACAGACTCTGACGCTGGCTCCAATTCACACATCAGTACTCGCTG
 TTGCCTTCCCACGACCCGACGCTGGCCCTGGACTCGTCTCATCTCCATCAACGCAGACAATGGGCAGCTGT
 TCGCGCTCAGGGCGCTGGACTATGAGGCCCTGCAGGCCTTGGAGTCCACGTGGGTGCAATAGACCAAGG
 CTCACCTGCGCTCAGCAGCAAGCGCTGGTGCCTGGTGGTGTGGACGACAATGACAATGCGCCCTTC
 GTGCTCTACCCGATGCAGAACTCTCTGCGCTTGCACAGAACTGCTGCCAGGGCGGCGGAACCCGGAT
 ACCTGGTCACCAAGGTGGTGGCTGTGGATCGCGACTCTGGCCAGAATGCCTGGCTGTATTCCAACCTCT
 CAAGGCTACGGAGCCCGGGCTGTTACAGCGTGTGGGCGCAATGGCGAGGTACGCACTACAGACTGCTG
 AGCGAGCGCGATGTGCCAAGCACAGGCTGGTCTCTGCTGGTCAAGGACAATGGCGATCCTCCGCGCTCTG
 CCAGCGTCACGCTGCACGTGCTAGTGGTGGATGGCTTCTCTCAGCCCTACCTGCCTCTGCCAGAGGTGGC
 GCGCAATCCCGCGCACGATGAGGACGCTTAACACTGTATCTGGTCAAGCCTTGGCATCTGTGTCTTCT
 CTCTTCTCTTGTCTGTGCTGCTGTTTGTGGGGTGGAGCTGTGCAGGAGGGCCAGGTCCGCCTCTCTGA
 GTGTTATTCCGTGCCTGAGGGCCACATTCCTGGCCATCTGGTGGATGTGAGAGGTGTGGGACCCCTGTC
 CCAGAGCTACCAGTATGATGATGTCTGATGGCGATTCTCTGGGACCAAGTGAATTAACCTCTTAAAG
 CCAGTTTTCCCTAGCTCTAGACCAGTCTCTGGTAAAGAAATAGAGGAAAATTCCTCACTCCACAATA
 GTTTTGGATTTTCATCAT

ACGCGTACGCGGCCGCTCGAG - GFP Tag - GTTTAA

Protein Sequence: >MG210722 representing NM_053142
Red=Cloning site Green=Tags(s)

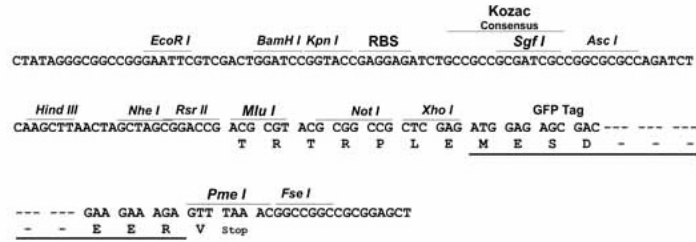
METAWMCNLRQRQVLAFFVLLHVSGAGAELGPYSIEEETERGSFVANLGKDLGVDLAEISNRRARIISQE
NKEHLQLNLQSGDLLINEKLDREELCGPIEPCVLHFQVLMENPLEVFQAE LRVM DINDYSPVFSEREMIL
RILENSALGDTFPLNNA L DSDVA INNIQTYRLSSNSHFLVVTRNRSDGRKYPELVLEKELDREEPELRL
TLTALDGGAPPRSGTAQVLEIVVDINDNAPKFQQPTYRVQIPENSPTGSLVLTVSANDLDSGDYGKVL YA
LSQPSEDISKTLEVNPTGEIRLRKEVDFETIPSYEVDIKATDGGGLSGKCTLLKVVVDVNDNAPEVMLS
ALTSPVPENSPDEVVAVFSVKDPDSANNGKMIASIEEDLPFLKSSGKNFYTLVTKRALDREEREKYNIT
ITVSDLGTPRLTQHTITVQVSDTNDNAPAFNQTSYTLFVRENNSPAMHIGTISATDSDAGSNHSISYSL
LPSHDPQLALDSLISINADNGQLFALRALDYEALQAFEFHVGAI DQGSPALSSQALVRVVVLDNDNAPF
VLYPMQNSSAPCTELL PRAAEPGYLVTKVVAVDRDSGQNAWLSFQLLKATEPGLFSVWAHNGEVRTTRLL
SERDVPKHRLVLLVKDNGDPPRSASVTLHVLVVDGFSQPYLPLPEVARNPAHDEDALTYLVIALASVSS
LFLLSVLLFVGVR L CRRARSASLSGYSVPEGHIPGHLVDVRGVGTL SQSYQYDVCLMGDSSGTSEFNFLK
PVFPSSLDQCSGKEIEENSSLHNSFGFHH

TRTRPLE - GFP Tag - V

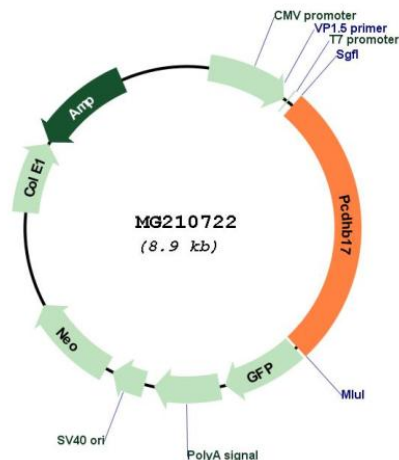
Restriction Sites: Sgfl-MluI

Cloning Scheme:

Cloning sites used for ORF Shutting:



Plasmid Map:



ACCN: NM_053142

ORF Size: 2397 bp

OTI Disclaimer: The molecular sequence of this clone aligns with the gene accession number as a point of reference only. However, individual transcript sequences of the same gene can differ through naturally occurring variations (e.g. polymorphisms), each with its own valid existence. This clone is substantially in agreement with the reference, but a complete review of all prevailing variants is recommended prior to use. [More info](#)

OTI Annotation: This clone was engineered to express the complete ORF with an expression tag. Expression varies depending on the nature of the gene.

Components: The ORF clone is ion-exchange column purified and shipped in a 2D barcoded Matrix tube containing 10ug of transfection-ready, dried plasmid DNA (reconstitute with 100 ul of water).

Reconstitution Method:

1. Centrifuge at 5,000xg for 5min.
2. Carefully open the tube and add 100ul of sterile water to dissolve the DNA.
3. Close the tube and incubate for 10 minutes at room temperature.
4. Briefly vortex the tube and then do a quick spin (less than 5000xg) to concentrate the liquid at the bottom.
5. Store the suspended plasmid at -20°C. The DNA is stable for at least one year from date of shipping when stored at -20°C.

RefSeq: [NM_053142.3](#), [NP_444372.2](#)

RefSeq Size: 3284 bp

RefSeq ORF: 2400 bp

Locus ID: 93888

Cytogenetics: 18 B3