

Product datasheet for **MG210720**

Gpr156 (NM_153394) Mouse Tagged ORF Clone

Product data:

Product Type:	Expression Plasmids
Product Name:	Gpr156 (NM_153394) Mouse Tagged ORF Clone
Tag:	TurboGFP
Symbol:	Gpr156
Synonyms:	Gababl
Mammalian Cell Selection:	Neomycin
Vector:	pCMV6-AC-GFP (PS100010)
E. coli Selection:	Ampicillin (100 ug/mL)



[View online »](#)

ORF Nucleotide
Sequence:

>MG210720 representing NM_153394
Red=Cloning site Blue=ORF Green=Tags(s)

TTTTGTAATACGACTCACTATAGGGCGGCCGGGAATTCGTCGACTGGATCCGGTACCGAGGAGATCTGCC
GCC**CGCATCGCC**

ATGGAGCCAGAAATCAACTGCTCTGAATTTTGTGACAGTTTTCTGGTCAAGAGCTGGATCGGAGACCCC
TTCATGATCTTTGCAAGACAACCATTACTGAGTCCCAGCACAGTAGTACAGCCGCCTCCCCACTGTCTCC
TGCCCTCTTGGGATTATGTGGACCTTTCTCAGCTGTGGGCTACTTCTGGTGCTCTTCTTTCTGGCTTTC
ACAATTCGCTGCAGGAAGAACAGGATTGTGAAGATGTCCAGCCCCAATCTGAATGTTGTGACCTTGTGG
GCAGTTGTCTGACCTACATCAGCGCTTACCTTTTTGGGATTCAAGATGCTCTTGAGGGGAGTTTCAGTAGA
AGCTCTCATTAGACACGACTGTCCTTGTGTGCATTGGGACGTCCTTGGTGTGGCCCTATCTGGGG
AAGAGCTGGCGACTCTACAAAGTGTACCCAGAGAGTACCGACAAGAGAGTGATCATCAAGACCTGC
AGTTGCTGGGATTGGTGGCAGCACTGGTGGTGGCTGATGTAATCCTGCTTGTGACATGGGTGCTGACTGA
CCCCATCCAGTGCCTCCAGATGCTTGGTGTGAGCATGAAGGTGACAGGGAGAGATGTCTCCTGCTCTTTG
ACCAACACACACTTCTGTGCTTACCGGTACTCCGATGTCTGGATAGCCCTGGTTTTGGGATGCAAGGGGC
TGCTGCTGCTGTATGGTCTTACCTGGCTGGCCTGACCAACCATGTGACGCTCTCCTCCAGTGAACCAAGTC
CTTAACCATCATGGTCCGGGTCAACCTCCTGCTCCTCACCCTGGGCTGCTTTTTGTGGTACCAGATAC
CTGCACTCCTGGCCCAATCTGGTCTTTGGACTCACATCCGGAGGTATCTTCGTTTGACACAACCACTGTGA
ACTGCTGTGCTTCTATCCCCAGCTGAAGCAATGGAAGGCATTTGAAGGAGAAAAACCAACAATGAGACA
CATGGCCAAATACTTCAGCACTCCAGCAAAAAGCTTCCACGGCCAGTTCGATGAGGACCCGAGCTGCCAC
TTGAGAGATGAGAAGAGCTGCATGGAGAGGCTCCTAACAGAAAAAACCGCAGTAATTGAAAGCCTGCAAG
AGCAAGTCAGCAACGCCAAGGAAAAGCTGGTAAAGCTGATGCTGCCGAGTGCACCTATGACTCCCCAGA
GTGGGCTGTCCCAGATGCAGCCTCTGCCGTGGGCTGGCACTTCCGGGACCTTCGGAATGCCCTGCTGTT
TCGGAGAATGAGAGCGGAGCAGCTGCTAGGGACTCCCTACACGTTCCAGCGGCCTGCCAGCACGTGCAAG
GCCCTGGGGCATCGAGAAGGGACACCAGTCCCTCCCCAGCCCAACAGGACAACATGCCTTTAAAACAGTA
TTGTGATCATTTGGACACGGGTTGCAACCAAGAAGCCTGCAACAAAGCGAGGGTCCCAGAAAGAGGA
GACCAGGAACCCATGGCCCCAGCCAGCGTTTAAATGGCAGATGGAGTGGCCTGTGAACCCCATAGCCCA
GGCAGAGCCAGAGGGACTCCCAAGAAGCTACCTGGGGTCAGTTCAGTAGTCAGAGAGAAGCTTCAAGA
AGTTCTACAAGAGCTGGACCTGGGCTCTGAGGCTCCCCTTCCCCACTACCCTGTCCCAGCAGCTCTGG
AAGAGTACCCTTCCCGTAGCCCCAGAAGCTGTCCCCTCTAAACTGGGTTTCAGCCCGTACGTGGTGA
GGAGGAGACGGGCGGCCAGAGGGCTCGCTCCACATCCCTGGCTCTGTGGGTCTCAATGTGGGGCATCA
AGCAAATAGTACCGTTTCTAGTTCACAAAGTGGGCTTATTGTACAGAACAGAGACAGTCCCAGGCTGGAC
CACAAATGCAAGGTCCAAGGTACCAAGATCTTCTTCTGTAACCATCACCCTCTCGGAACCTCGCC
GGAAACAGGGTACCCTGGAGGGCAGCAACAATGCGAGACCGAGCCTCAAGAGGCCGGGGAGCATGCAA
TGTAGCTTTTCTTGCCAATCTTCTGCTTCTGTCCAGGCACAAAGTCCCGCAGCCCCATGCCTACCCTCT
TCACCAGCTCTGCCAGGCAGCGTCAGCCTCGACCCGACTGTCCCCTGGCTGTCTTCTTGTCTTCTG
GGTGTACAACCTTGACAGTGAAGTCCAGCAGCTCAGACGAGTTCTTCTGCCGCTGCCACAGGCCCTACTG
TGAAATCTGCTTCCAGAGCTCTTTGGACTCCAATGACAGCGACACTTCAGACAGTGACCTTGAGCAGGCT
TCAGGATTGGCCTCTGGGAAAAGCTGTGGGCCGCTCCAAGCCTGTTGTGAACCTCAAAGATGACTTGA
AGCCACGCTAGTG

ACGCGTACGCGGCCGCTCGAG - GFP Tag - GTTTAA

Protein Sequence: >MG210720 representing NM_153394
 Red=Cloning site Green=Tags(s)

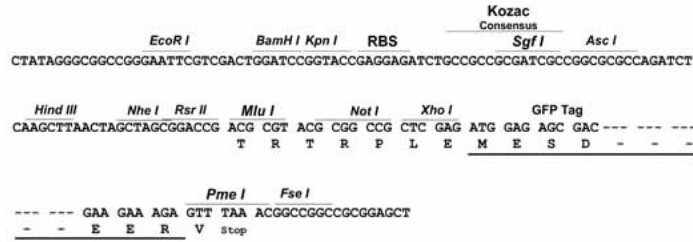
```
MEPEINCSEFCDSFPGQELDRRPLHDLCKTTITESQHSSTAASPLSPALLGIMWTFVSCGLLLVLFFLAF
TIRCRKNRIVKMSSPNLNVVTLGSLTYISAYLFGIQDALEGSSVEALIQTRL SLLCIGTSLVFGPILG
KSWRLYKVFVTPDKRVIKDLQLLGLVAALVVADVILLVTWVLTDP IQCLQMLGVSMKVTGRDVSCSL
TNTHFCASRYSDVWIALVLGCKGLLLL YGAYLAGL TNHVSSPPVNQSLTIMVGVNLLLLTAGLLFVVTRY
LHWPVNLVFGLTSGGIFVCTTTVNCCVFIPQLKQWKAFEGENQTMRHMAKYFSTPSKSFHGQFDEDPSC
LRDEKSCMERLLTEKNAVIESLQEQV SNAKEKLVKLMSAECTYDSPEWAVPDAASARGLALPGPSECPAV
SENEGAAARDSLHVPAACQHVQGP GASRRDTSPSPAQQDNMPLKQYCDHLD TGCNQKPKAEQSEGPERG
DQEPMAPSQRLMADGVACEPHKPRQSPEGLPKKLPGVSSVVREKLQEV LQELDLGSEAPLSPLPCPQQLW
KSTTSRSPQKLSPSKLGFSPIVRRRRAAQRARSHIPGSVGLNVGHQANSTVSSSSQSLIVQNRDSPRLD
HNNARSKVPRSSSVKPSPLSEPRRKQGTLEGSKQCETEPQEAGGACNVAFCQSSASVQAQSPAAPCLPS
SPALPRQRQPRRLSPGCPSLSSGCYNLDSESSSSDEFFCRCHRPYCEICFQSSLSDNDSDTSDSDLEQA
SGLASWGKLVARSKPVVNFKDDLKPTLV
```

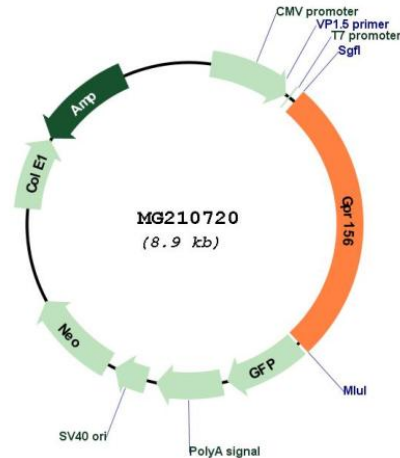
TRTRPLE - GFP Tag - V

Restriction Sites: SgfI-MluI

Cloning Scheme:

Cloning sites used for ORF Shuttling:



Plasmid Map:


ACCN: NM_153394

ORF Size: 2394 bp

OTI Disclaimer: The molecular sequence of this clone aligns with the gene accession number as a point of reference only. However, individual transcript sequences of the same gene can differ through naturally occurring variations (e.g. polymorphisms), each with its own valid existence. This clone is substantially in agreement with the reference, but a complete review of all prevailing variants is recommended prior to use. [More info](#)

OTI Annotation: This clone was engineered to express the complete ORF with an expression tag. Expression varies depending on the nature of the gene.

Components: The ORF clone is ion-exchange column purified and shipped in a 2D barcoded Matrix tube containing 10ug of transfection-ready, dried plasmid DNA (reconstitute with 100 ul of water).

Reconstitution Method:

1. Centrifuge at 5,000xg for 5min.
2. Carefully open the tube and add 100ul of sterile water to dissolve the DNA.
3. Close the tube and incubate for 10 minutes at room temperature.
4. Briefly vortex the tube and then do a quick spin (less than 5000xg) to concentrate the liquid at the bottom.
5. Store the suspended plasmid at -20°C. The DNA is stable for at least one year from date of shipping when stored at -20°C.

RefSeq: [NM_153394.2](#), [NP_700443.2](#)

RefSeq Size: 4600 bp

RefSeq ORF: 2397 bp

Locus ID: 239845

UniProt ID: [Q6PCP7](#)

Cytogenetics: 16 B3

Gene Summary: Orphan receptor.[UniProtKB/Swiss-Prot Function]