

Product datasheet for **MG210717**

Ampd2 (NM_028779) Mouse Tagged ORF Clone

Product data:

Product Type:	Expression Plasmids
Product Name:	Ampd2 (NM_028779) Mouse Tagged ORF Clone
Tag:	TurboGFP
Symbol:	Ampd2
Synonyms:	1200014F01Rik; AI552571; Ampd-2; m4521Dajl
Mammalian Cell Selection:	Neomycin
Vector:	pCMV6-AC-GFP (PS100010)
E. coli Selection:	Ampicillin (100 ug/mL)



[View online »](#)

ORF Nucleotide Sequence:

>MG210717 representing NM_028779
 Red=Cloning site Blue=ORF Green=Tags(s)

TTTTGTAATACGACTCACTATAGGGCGGCCGGAATTCGTCGACTGGATCCGGTACCGAGGAGATCTGCC
 GCC**CGGATCGCC**

ATGGCCTCAGAAGCTCGAAGCGGTCTGGGGCCTCTCCGCTACAGCTGCCCGATCCCTGCCAGGCAACG
 CCCTTGCTCAAGCACTTCCCCTTGACTGCGCACGTCTATGGATGGCAAATGCAAGGAGATCGCTGA
 GGAGTTGTTTCAGCCGCTCACTGGCTGAGAGTGAGCTTCGTAGCGCCCTTATGAGTTCCAGAGGAAAGC
 CCCATCGAGCAGCTAGAAGAACGGAGGCAGCGGCTGGAGCGCCAGATCAGCCAGGATGTCAAGCTGGAGC
 CAGATATTCTTTCGAGCCAAGCAAGATTTCTGAAGACAGACAGCGACTCAGACTTACAGCTGTACAA
 GGAGCAAGGAGAGGGACAGGGTGACAGGGGTCTTTGGAACTGATGTGGTATTGGAACGGGAATTTGAG
 CGGGTCATCATCTCTGGGAGGAGAAGTGTGGGTGCCATTACAGACCTTTAGACGCAGCCAAAAGTG
 TGGTTCGGGCACTTTTCATCCGGGAGAAGTACATGGCCCTACTGCAGAGCTTCTGTCCACCACCCG
 CCGTTACCTGCAGCAGCTGGCTGAGAAGCCCTGGAGACTCGAATTATGAGCAGAGTCTGATACCCCT
 GTATCTGCTGATGCCCCAGTGCATCCCCCTGCACTGGAGCAGCACCCGTATGAGCACTGTGAGCCAAGCG
 CCATGCCTGGGGACCTGGGCTTGGGTCTGCGCATGGTGGCTGGTGTGGTGACAGTCTACACCCGAGGGA
 CCCTGATGAGCACTGTCCGGAGGTGGAGCTTCCATACCCTGACCTACAGGAATTTGTAGCTGACGTCAAT
 GTGCTGATGGCCCTGATCATCAATGGTCCCATAAAGTCATTCTGTACCGCCGGCTGCAGTACCTGAGCT
 CCAAATTCAGATGCACGTTTTGCTCAATGAGATGAAGGAGCTCGCTGCTCAGAAGAAAGTCCACACCCG
 GGACTTCTACAATATCCGTAAGGTGGACACACATCCACGCCTCGTCTGCATGAACAGAAACATCTA
 CTGCGCTTCATCAAGCGGGCCATGAAGCGGCACCTGGAGGAGATTGTGCATGTGGAACAGGGCCCGGAGC
 AGACGCTGAGAGAAGTCTTCGAGAGCATGAACCTCACTGCCTACGACTTAAGTGTGGACAGCTGGATGT
 GCATGCGGACAGGAATACCTTTTCATCGATTTGACAAATCAATGCCAAATACAACCCTATTGGGGAGTCT
 GTTCTCCGAGAGATCTTCAATAAAACCGACAACAAGATTTCTGGGAAGTACTTTGCTCACATCATCAAGG
 AGGTGATGGCAGACTTGGAGGAGAGCAAAACCAGAATGCAGAGCTCCGGCTGTCCATCTACGGGCGTTC
 GAGGGATGAGTGGGACAAGCTGGCAGCTGGGCAGTGAACCACAAAGTCACTCTCCCAATGTCCGCTGG
 CTGGTGCAGGTGCCCGCCTCTTCGATGTGTACCGCACCAAGGGCCAGCTGGCCAACCTCCAAGAGATGC
 TGGAGAACATCTTCTGCCCTGTTTGGAGCTACTGTGCACCCTGCCAGCCACCCGGAGCTGCACCTCTT
 TCTGGAGCACGTGGATGGTTTTGATAGCGTGGATGATGAGTCCAAGCCAGAGAACCAGTCTTCAACCTG
 GAGAGTCCCTCCAGAAGCTTGGGTGGAGGAGACAACCCTCCCTATGCCTACTACCTGTACTACCT
 TCGCTAACATGGCTATGTTGAACCATCTGCGCAGGCAGAGAGGTTCCACACGTTTCGTGCTGAGGCCGCA
 CTGTGGGGAGGCCGGGCCATCCACCACCTGGTATCAGCCTTCATGCTGGCCGAGAACATCTCCACGGG
 CTGCTCCTGCGCAAGGCCCGCTCCTGCAGTACCTGTATTACCTGGCTCAGATCGGCATCGCCATGTCCC
 CGCTCAGCAACAACAGCCTGTTCCCTCAGTACCACCGAACCCCTCCTCCTGAGTACTTGTCCCGTGGCCT
 CATGGTCTCGTGTCCACAGATGATCCCTTGCAAGTCCACTTACCAAGGAGCCCTGATGGAGGAGTAC
 AGCATCGCACCCAGGTGTGGAAGCTCAGCTCCTGCGATATGTGCGAGCTGGCCCGTAACAGCGTGTCTCA
 TGAGTGGCTTCTCTACAAGGTGAAAAGCCACTGGCTGGGACCCAACTATACCAAGGAGGGCCCTGAGGG
 CAATGATATCCGCCGTACCAACGTGCCAGACATCCGAGTGGGCTACCGCTATGAGACGCTATGCCAGGAG
 CTGGCACTTATCACACAGGCCGTCCAAAGTGAGATGCTGGAGACCATCCCAGAGGAAGTGGGCATTGTCA
 TGAGCCAGGGCCT

ACGCGTACGCGGCCGCTCGAG - GFP Tag - GTTTAA

Protein Sequence: >MG210717 representing NM_028779
 Red=Cloning site Green=Tags(s)

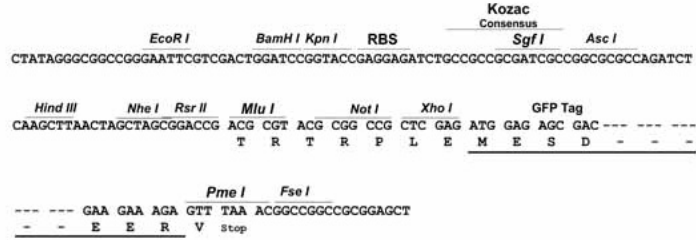
MASEARSGLGASPLQSARSLPGNAPCLKHFPLDLRTSMDGKCKEIAEELFSRSLAESELRSAPYEFPEES
 PIEQLEERRQLERQISQDVKLEPDILLRAKQDFLKTDSDSLQLYKEQGEGQDRGLWERDVVLEREFQ
 RVIISGEEKCGVPFTDLLDAAKSVVRALFIREKYMALSLQSFCTTRRYLQQLAEKPLETRTYEQSPDTP
 VSADAPVHPPALEQHPYEHCEPSAMPGDGLGLRMVRGVVHVYTRRDPDEHCPEVELPYPDLQEFVADV
 VLMALIINGPIKSFYRRLQYLSSKFQMHVLLNEMKELAAQKKVPHRDFYNIRKVDTHIHASSCMNQKHL
 LRFIKRAMKRHLEEVHVEQGREQTLREVFESMNLTAIDLSDVTLDVHADRNTHFRFDKFNAYNPIGES
 VLREIFIKTDNKISGKYFAHIIKEVMADLEESKYQNAELRLSIYGRSRDEWDKLRWAVNHKVHSPNVRW
 LVQVPRLFDVYRTKGQLANFQEMLENIFLPLFEATVHPASHPELHLFLEHVDFGDSVDDESKPENHVFNL
 ESPLPEAWVEEDNPPYAYLYYTFANMAMLNHLRRQRFHTFVLRPHCGEAGPIHHLVSAFMLAENISHG
 LLLRKAPVLQYLYYLAQIGIAMSPLSNNSLFLSYHRNPLPEYLSRGLMVSLSTDDPLQFHFTKEPLMEEY
 SIATQVWKLSSCDMCELARNSVLMGFSHKVKSHWLGPNTYKEGPEGNDIRRTNVPDIRVGYRYETLCQE
 LALITQAVQSEMLETIPEEVGIVMSPGP

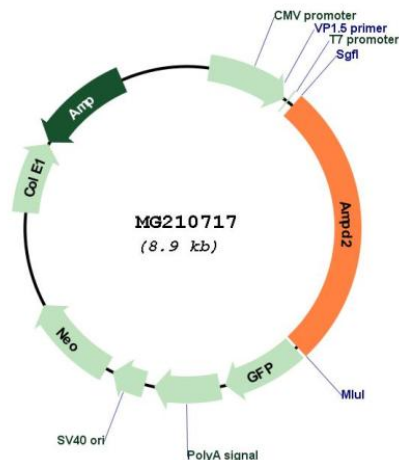
TRTRPLE - GFP Tag - V

Restriction Sites: Sgfl-MluI

Cloning Scheme:

Cloning sites used for ORF Shutting:



Plasmid Map:


ACCN: NM_028779

ORF Size: 2394 bp

OTI Disclaimer: The molecular sequence of this clone aligns with the gene accession number as a point of reference only. However, individual transcript sequences of the same gene can differ through naturally occurring variations (e.g. polymorphisms), each with its own valid existence. This clone is substantially in agreement with the reference, but a complete review of all prevailing variants is recommended prior to use. [More info](#)

OTI Annotation: This clone was engineered to express the complete ORF with an expression tag. Expression varies depending on the nature of the gene.

Components: The ORF clone is ion-exchange column purified and shipped in a 2D barcoded Matrix tube containing 10ug of transfection-ready, dried plasmid DNA (reconstitute with 100 ul of water).

Reconstitution Method:

1. Centrifuge at 5,000xg for 5min.
2. Carefully open the tube and add 100ul of sterile water to dissolve the DNA.
3. Close the tube and incubate for 10 minutes at room temperature.
4. Briefly vortex the tube and then do a quick spin (less than 5000xg) to concentrate the liquid at the bottom.
5. Store the suspended plasmid at -20°C. The DNA is stable for at least one year from date of shipping when stored at -20°C.

RefSeq: [NM_028779.5](#)

RefSeq Size: 3650 bp

RefSeq ORF: 2397 bp

Locus ID: 109674

UniProt ID: [Q9DBT5](#)

Cytogenetics: 3 46.83 cM

Gene Summary:

AMP deaminase plays a critical role in energy metabolism. Catalyzes the deamination of AMP to IMP and plays an important role in the purine nucleotide cycle (By similarity).
[UniProtKB/Swiss-Prot Function]