

Product datasheet for **MG210711**

Dpp10 (BC067026) Mouse Tagged ORF Clone

Product data:

Product Type:	Expression Plasmids
Product Name:	Dpp10 (BC067026) Mouse Tagged ORF Clone
Tag:	TurboGFP
Symbol:	Dpp10
Synonyms:	DPRP3
Mammalian Cell Selection:	Neomycin
Vector:	pCMV6-AC-GFP (PS100010)
E. coli Selection:	Ampicillin (100 ug/mL)



[View online »](#)

ORF Nucleotide Sequence:

>MG210711 representing BC067026
 Red=Cloning site Blue=ORF Green=Tags(s)

TTTTGTAATACGACTCACTATAGGGCGGCCGGGAATTCGTGACTGGATCCGGTACCGAGGAGATCTGCC
 GCC**CGCATCGCC**

ATGAAGCAGGAGCAGCAACCCACCCAGGGGCCAGGGCAACCCAGTCGCAGCCAGCCAGGAACTAG
 GAAGTAACAGCCCTCCACAAAGAACTGGAAGGGAATCGCCATTGCCCTGCTGGTGATCTTGGTGGTATG
 CTCACTCATCACAAATGTCTGTATCCTGTTAAACCCAGATGAACTAACAAATCTTCAGAAAACAAGACTG
 TCACTAGAGGAGCTTTTGGGAAAGGATTCGGACTTCATAATCCAGAACCTCGGTGGATCAATGATACAG
 TCGTGGTATATAAAAACCAACAATGGACACGTGATGAACTGAATACAGAATCAAATGCTTCCACATTGTT
 ATTGGACAACTCAACTTTTGTAACTGTTAAAGCCTCCAGACACTCACTTTCCCGAGATTTAAAGTATGTT
 CTCCTGGCATAACGACGTTAAGCAGATTTTTCATTACTCATTTACCGCTTCATATTTGATTTACAACATAC
 AACTGGGGAAGTGTGGGAGTTGAATCCCCCAGAAGTTGAGGACTCAGTGTTCAGTATGCGGCCTGGGG
 TGTGCAAGGACAGCAGCTGATTTATATTTTGAACAATATCTACTATCAACCTGATATCAAGAGCAGT
 TCTTTACGACTAACATCTTCAGGAAAGGAAGGCATTATTTTAAATGGGATTGCTGACTGGTTATATGAAG
 AAGAACTTCTGCATTCTCATATCGCCACTGGTGGTCCCCGATGGAGAGAGACTTGCCCTCCTGATGAT
 AAATGACTCGTTGGTGCCTAACATGATCATACCTCGGTTTACTGGAGCACTGTACCCCAAAGCAAAGCAG
 TACCCATACCCCAAGGCAGGTCAGCGAACCCATCAGTGAAGTTATATGTTGTAACCTGTATGGACCAA
 CTCATACTTTGGAGCTGATGCCACCCGACATTTTAAATCAAGAGAATATTACATCACCATTGGTTAAATG
 GGTGAGCAACACGAGGACAGTGGTCAGGTGGTTGAATCGGCCTCAGAACATCTCCATCCTCACACTCTGT
 GAATCTACCACCGGGCATGCAGCAGGAAATATGAGATGACGTCGACACCTGGCTCTCTAACAGAAACG
 AGGAGCCAGTGTTCAGAGATGGAAGCAAGTTCTTCATGACTGTTCCCTGTTAAACAAGGTGGAAGAGG
 AGAATTCACCACATAGCTATGTTCTGGTCCAGAGTAAAAGCGAGCAAATTACGGTGCAGCATCTGACA
 TCAGGAACTGGGAAGTGATAAGGATCTTGGCCTATGATGAAACAACCTAAAAAATTTACTTTCTGAGCA
 CAGAATCTTCCCAAGGGAGGCAACTATACAGTGCTTCTACTGAGGGACTATTGAATCGTGATTGCAT
 CTCATGCAACTTTATGAAAGAAGATTGCACGATTTTGTATGCCAGCTTTAGCCCCATGAATCAACATTTT
 TTGTTATTCTGTGAAGGTCAAAGGTCCCAGTGGTCAGCCTTACATCACAGACAACCCATCAAGGTATT
 TCCTCTTGAAAAACAATTCTGTGATGAAAGAACTATTGAGAAGAAGAAGCTCGCAAAGAGAGAGACTAG
 AATACTTCACATTGATGACTATGAACTTCTTTACAGTTGTCCTTTCCCAAAGATTTTATGGAGAAAAAC
 CAGTATGCTCTTCTATTAATAATGGATGAAGAACCAGGAGGCCAAATGGTGACAGATAAGTTCATGTTG
 ACTGGGATTCAGTCTTATTGACACCGATAATGTCAATTGTAGCAAGATTTGATGGCAGAGGAAGTGGATT
 CCAGGGCCTGAAAGTTTTGCAGGAGATTCACAGAAGGATAGGCTCAGTGGAGGCAAAGGACCAAGTAGCT
 GCTGTAATAATTTACTGAAACAGCCATATATTGACTCCAAAAGATTAAGCATTTTGGAAAGGGATATG
 GGGGCTATATTGCATCAATGATCTTAAATCAGATGAGAAGTTTTTCAAATGTGGAGCCGTGGTTGCACC
 CATCTCAGACATGAAGTTGTATGCCTCAGCTTTCTCTGAACGGTACCTTGGCATGCCATCAAAGGAAGAA
 AGCACTTACCAGGCATCCAGTGTACTGCATAACATTCATGGTTTTAAAAGAAGAAAATTTATTAATAATTC
 ACGGAACTGCTGATACAAAAGTTCAATTCAGCATTTCAGCAGAATTGATCAAGCATCTGATAAAAGCTGG
 GGTGAATTACACTCTGCAGGTCTATCCAGATGAAGGATATCACATTTTCAGACAAGAGCAAGCATCATTTT
 TACAGCACAATTCTCAGATCTTCAGTGATTGTCTAAAGGAAGAGGTATCTGTGCTGCCACAGGAACCCAG
 AAGAAGATGAA

ACGCGTACGCGGCCGCTCGAG - GFP Tag - GTTTAA

Protein Sequence: >MG210711 representing BC067026
Red=Cloning site Green=Tags(s)

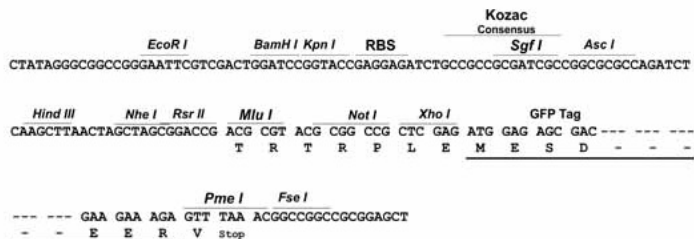
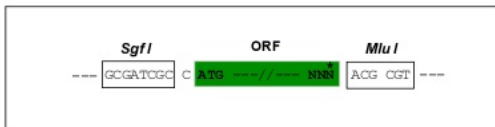
MKQEQQPTPGARATQSQPADQELGSNSPPQRNWKIAIALLVILVVCSLITMSVILLTPDELTNSETRL
SLEELLGKGFGLHNPEPRWINDTVVVYKTNNGHVMKLNTESNASTLLLDNSTFVTFKASRHSLSPDLKYV
LLAYDVKQIFHYSFTASYLIYNIHTGEVWELNPPEVEDSVLQYAAWGVQGGQLIYIFENNIYYQPDIKSS
SLRLTSSGKEGIIFNIGIADWLYEEELLHSHIAHWWSPDGERLAFMLINDSLVPNMIIPRFTGALYPKAKQ
YPYPKAGQANPSVKLYVYNLYGPTHLELMPPDIFKSREYYITMVKWSNTRTVVRWLNRPQNISILTLC
ESTTGACSRKYEMTSDTWLSKQNEEPVFSRDGSKFFMTVPVKQGGGRGEFHIIAMFLVQSKSEQITVRHLT
SGNWEVIRILAYDETTQKIYFLSTESSPQGRQLYSASTEGLLNRDCISCNFMKEDCTYFDASFSPMNQHF
LLFCEGPKVPVSLHITDNPSRYFLENN SVMKETIQKKKLAKRETRILHIDDYELPLQLSFPKDFMEKN
QYALLIMDEEPGGQMVTDKFHVDWDSVLIDTDNVIVARFDGRGSGFQGLKVLQEIHRRIGSVEAKDQVA
AVKYLKQPYIDSKRLSIFGKGYGGYIASMILKSDEKFFKCGAVVAPISDMKLYASAFSERYLGMPKSEE
STYQASSVLHNIHGLKEENLLIIHGTADTKVHFQHS AELIKHLIKAGVNYTLQVYPDEGYHISDKSKHHF
YSTILRFFSDCLKEEVSVLPQEPEEDE

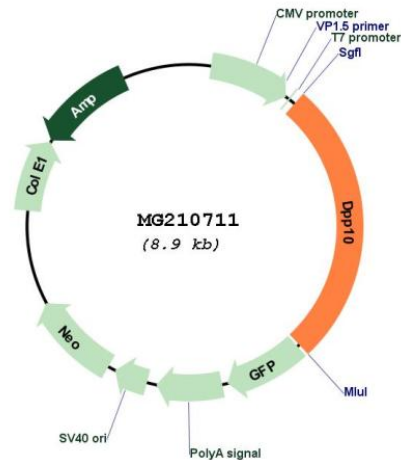
TRTRPLE - GFP Tag - V

Restriction Sites: Sgfl-MluI

Cloning Scheme:

Cloning sites used for ORF Shutting:



Plasmid Map:


ACCN: BC067026

ORF Size: 2393 bp

OTI Disclaimer: The molecular sequence of this clone aligns with the gene accession number as a point of reference only. However, individual transcript sequences of the same gene can differ through naturally occurring variations (e.g. polymorphisms), each with its own valid existence. This clone is substantially in agreement with the reference, but a complete review of all prevailing variants is recommended prior to use. [More info](#)

OTI Annotation: This clone was engineered to express the complete ORF with an expression tag. Expression varies depending on the nature of the gene.

Components: The ORF clone is ion-exchange column purified and shipped in a 2D barcoded Matrix tube containing 10ug of transfection-ready, dried plasmid DNA (reconstitute with 100 ul of water).

Reconstitution Method:

1. Centrifuge at 5,000xg for 5min.
2. Carefully open the tube and add 100ul of sterile water to dissolve the DNA.
3. Close the tube and incubate for 10 minutes at room temperature.
4. Briefly vortex the tube and then do a quick spin (less than 5000xg) to concentrate the liquid at the bottom.
5. Store the suspended plasmid at -20°C. The DNA is stable for at least one year from date of shipping when stored at -20°C.

RefSeq: [BC067026](#), [AAH67026](#)

RefSeq Size: 4634 bp

RefSeq ORF: 2393 bp

Locus ID: 269109

Cytogenetics: 1 E2.3

Gene Summary:

Promotes cell surface expression of the potassium channel KCND2 (PubMed:22311982). Modulates the activity and gating characteristics of the potassium channel KCND2 (PubMed:22311982). Has no dipeptidyl aminopeptidase activity (Probable).[UniProtKB/Swiss-Prot Function]