

## Product datasheet for **MG210704**

### Rasgrp1 (NM\_011246) Mouse Tagged ORF Clone

#### Product data:

Product Type:	Expression Plasmids
Product Name:	Rasgrp1 (NM_011246) Mouse Tagged ORF Clone
Tag:	TurboGFP
Symbol:	Rasgrp1
Synonyms:	Rasgrp
Mammalian Cell Selection:	Neomycin
Vector:	pCMV6-AC-GFP (PS100010)
E. coli Selection:	Ampicillin (100 ug/mL)



[View online »](#)

**ORF Nucleotide Sequence:**

>MG210704 representing NM\_011246  
 Red=Cloning site Blue=ORF Green=Tags(s)

TTTTGTAATACGACTCACTATAGGGCGGCCGGGAATTCGTCGACTGGATCCGGTACCGAGGAGATCTGCC  
 GCC**GCGATCGCC**

ATGGGAACCTGGCAAGGCGAGAGAGGCTCCGCGGAAACCTTGCCATGGCTCCAGAGCTGGCCCCAAAG  
 CAAGACTAGAGGCCAAATCAACCAACAGCCCTCTCCCTGCCAGCCAGCTTGGCCAGATCACCCAGTT  
 CCGAATGATGGTGTCCCTGGGACATTTGGCCAAAGGAGCCAGCCTGGATGATCTTATTGACAGCTGCATT  
 CAATCTTTTGTGCGGATGGAAACCTGTGTGCGAATAACCAACTGTTACAAGTCATGCTAACCATGCACC  
 GGATCATCATCTCCTCAGCCGAGCTGCTACAAAAAGTCATGAATCTATATAAGGATGCCCTGGAAAAAGAA  
 TTCTCCAGGAGTTTGCCTGAAGATCTGCTATTTTGTGAGTATTGGATAACAGAATTCTGGATCATGTTT  
 AAGATGGATGCCAGCTTGACCAGCACCATGGAAGAGTTCCAAGACCTGGTAAAGCCAATGGTGAGGAGA  
 CCCACTGCCACCTCATCGACACGACCCAAATTAATTCTCGAGACTGGTCCAGGAACTGACTCAGAGGAT  
 AAAATCGAATACTAGCAAGAAGCGCAAAGTGTCCCTGCTGTTTGACCATCTGGAACCTGAAGAACTGCT  
 GAACACCTCACCTACCTTGAGTTCAAGTCTTCCGACGGATATCTTTCTCTGATTACCAAAATTACCTTG  
 TAAATAGCTGCGTAAAAGAGAACCCACCATGGAGAGGTCCATTGCCCTGTGCAATGGCATCTCCCAAGT  
 GGTACAACCTGATGGTTCTCAGCCGTCCCACCCGAGCTCCGGGCAGAGGTCTTCATCAAGTTTATCCAT  
 GTGGCTCAGAACTCCACCAGCTACAGAACTTCAACACGCTGATGGCTGTGATCGGGGACTGTGTACACA  
 GCTCCATCTCCAGGCTTAAGGAAACAAGTTCACATGTCCACATGAGATCAATAAGGTTCTGGGCGAGAT  
 GACTGAACTGCTGCTCCTCGAGAACTATGACAACACAGGCGAGCCTATGGGGAGTGACCCCACTTC  
 AAAATCCCATACTGGGTGTGCACCTCAAGGACCTCATATCCCTGTATGAGGCTATGCCCGACTATCTGG  
 AAGATGGGAAGGTGAATGTCCAAAAGCTCCTGGCCCTTACAATCATATCAATGAATGGTCCAGCTGCA  
 GGAGATGGCCCCACCATTGGATGCCAACCAAGACTTGGTGCATCTGCTGACGTTATCCCTGGATCTATAC  
 TATACAGAAGATGAAATCTATGAGCTTTCCTATGCCCGGAGCCGAGGAACACAGAGCTCCGCCACTGA  
 CACCTTGAAGCCACCAGTTGTAGTAGACTGGGCTCTGGAGTGTCTCCCAAACCTGACCCAAAGACCAT  
 CAGCAAACACGTCCAAAGGATGGTGGATTCTGTCTTAAAGAACTATGATCTCGACCAGGATGGCTATATC  
 TCTCAGGAGGAGTTTGAAGATCGCTGCAAGCTTTCATTTTCTTCTGTGTGATGGACAAAGATAGGG  
 AAGGCCTCATCAGCAGAGACGAGATCACGGCTACTTCATGAGGGCCAGCTCCATCTATTCCAAGCTGGG  
 CCTGGGCTTTCACACAACCTTCAAGAAACCCTTACCTGAAGCCCACCTTCTGTGACAACCTGTGCTGGC  
 TTTCTCTGGGGCGTGATCAAGCAAGGCTATCGCTGTAAGACTGCGGGATGAACTGCCACAAACAGTGCA  
 AAGACCTGGTGGTGTTCGAGTGCAAGAAGCGAATCAAGAGCCCAGCAATATCCACAGAGAACATCAGCTC  
 TGTGTTACCAATGTCCACCCCTTGTCCACTGGGAACCAAGATCTGCTCCATGCACCCGAAGAAGGATCT  
 TTCATTTTCCAAAACGGAGAGATTGTGGACCACAGTGAGGAGAGCAAGGATAGGACCATCATGCTCCTCG  
 GAGTGTCTCCCAGAAAATTTAGTTCCGGCTGAAGAGGACTGTTGCCACAAGAGCACCCAAACAGAATC  
 GTTCCCGTGGGTTGGTGGCGAGACGACCCTGGTCACTTTGTGCTGTCTTCTCCAAGGAAGTCGGCGCAG  
 GGCGCTCTTTATGTGCACAGTCCAGCATCTCCATGCCCCAGCCAGCACTGGTCCGAAAGCGGGCATTTCG  
 TCAAGTGGGAGAACAAAGAGTCCCTTATAAAACCAAAACCAGAACTTACCTCCGGCTCCGGACCTACCA  
 AGAAGTGAACAGGAAAATAAATACCCTGAAAGCAGATAACGATGCTCTGAAGATCCAAGTGAAGTACGCA  
 CAGAAGAAAATAGAATCCCTGCAGCTTGGGAAAAGCAATCATGTCTTAGCCAGATGGACCACGGTGATA  
 GTGCT

**ACGCGT**ACGCGGCCGCTCGAG - GFP Tag - GTTTAA

**Protein Sequence:** >MG210704 representing NM\_011246  
 Red=Cloning site Green=Tags(s)

```

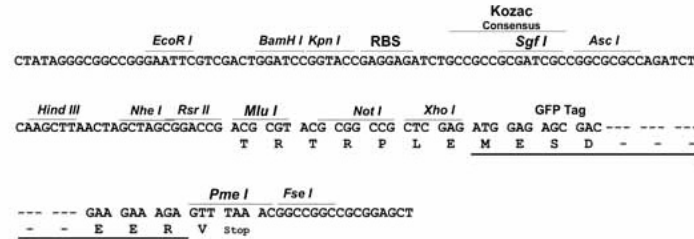
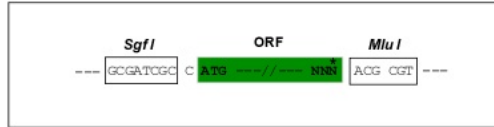
MGTLGKAREAPRKPC HGSRAGPKARLEAKSTNSPLPAQPSLAQITQFRMMVSLGHLAKGASLDDLIDSCI
QSFADAGNLCRNNQLLQVMLTMHRIIISSAELLQKVMNL YKDALEKNSPGVCLKICYFVRYWITEFWIMF
KMDASLTSTMEEFQDLVKANGEETHCHLIDTTQINSRDWSRKL TQRIKSNTSKKRKVSLLFDHLEPEELS
EHLTYLEFKSFRRISFSDYQNYLVNSCVKENPTMERSIALCNGISQWVQLMVL SRPTPQLRAEVFIKFIH
VAQKLHQLQNFNTLMAVIGGLCHSSISRLKETSSHVPHEINKVLGEMTELLSSCRNYDNYRRAYGECTHF
KIPILGVHLKDLISLYEAMPDYLEDGKVNQKLLALYNHINELVQLQEMAPPLDANKDLVHLLTLSLDLY
YTEDEIYELSYAREPRNHRAPPLTPSKPPVVVDWASGVSPKPDPKTISKHVQRMVDSVFKNYDLDDQGYI
SQEEFEKIAASFPSFCVMDKDREGLISRDEITAYFMRASSIYSKLGFGPHNFQETTYLKPTFCDNACAG
FLWGVIKQGYRCKDCGMNCHKQCKDLVVFECCKRIKSPAISTENISSVPMSTLCPLGTDLLHAPEEGS
FIFQNGEIVDHSEESKDRTIMLLGVSSQKISVRLKRTVAHKSTQTESFPWVGGETTPGHFVLSPPRKSQAQ
GALYVHSPASPCPSPALVRKRAFKWENKESLIKPKPELHLRLRTYQELEQEINTLKADNDALKIQLKYA
QKKIESLQLGKSNHVL AQMDHGDSA
  
```

TRTRPLE - GFP Tag - V

**Restriction Sites:** Sgfl-MluI

**Cloning Scheme:**

Cloning sites used for ORF Shutting:



- ACCN:** NM\_011246
- ORF Size:** 2385 bp
- OTI Disclaimer:** The molecular sequence of this clone aligns with the gene accession number as a point of reference only. However, individual transcript sequences of the same gene can differ through naturally occurring variations (e.g. polymorphisms), each with its own valid existence. This clone is substantially in agreement with the reference, but a complete review of all prevailing variants is recommended prior to use. [More info](#)
- OTI Annotation:** This clone was engineered to express the complete ORF with an expression tag. Expression varies depending on the nature of the gene.
- Components:** The ORF clone is ion-exchange column purified and shipped in a 2D barcoded Matrix tube containing 10ug of transfection-ready, dried plasmid DNA (reconstitute with 100 ul of water).

**Reconstitution Method:**

1. Centrifuge at 5,000xg for 5min.
2. Carefully open the tube and add 100ul of sterile water to dissolve the DNA.
3. Close the tube and incubate for 10 minutes at room temperature.
4. Briefly vortex the tube and then do a quick spin (less than 5000xg) to concentrate the liquid at the bottom.
5. Store the suspended plasmid at -20°C. The DNA is stable for at least one year from date of shipping when stored at -20°C.

**RefSeq:** [NM\\_011246.3](#)

**RefSeq Size:** 5155 bp

**RefSeq ORF:** 2388 bp

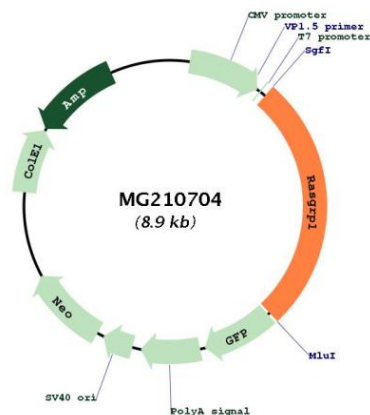
**Locus ID:** 19419

**UniProt ID:** [Q9Z1S3](#)

**Cytogenetics:** 2 59.19 cM

**Gene Summary:** Functions as a calcium- and diacylglycerol (DAG)-regulated nucleotide exchange factor specifically activating Ras through the exchange of bound GDP for GTP. Activates the Erk/MAP kinase cascade. Regulates T-cell/B-cell development, homeostasis and differentiation by coupling T-lymphocyte/B-lymphocyte antigen receptors to Ras. Regulates NK cell cytotoxicity and ITAM-dependent cytokine production by activation of Ras-mediated ERK and JNK pathways (By similarity). Functions in mast cell degranulation and cytokine secretion, regulating FcERI-evoked allergic responses (PubMed:17190838). May also function in differentiation of other cell types. Proto-oncogene, which promotes T-cell lymphomagenesis when its expression is deregulated (PubMed:15829980, PubMed:17210708).[UniProtKB/Swiss-Prot Function]

### Product images:



Circular map for MG210704