

Product datasheet for **MG210697**

Cdh12 (NM_001008420) Mouse Tagged ORF Clone

Product data:

Product Type:	Expression Plasmids
Product Name:	Cdh12 (NM_001008420) Mouse Tagged ORF Clone
Tag:	TurboGFP
Symbol:	Cdh12
Synonyms:	Br-cad; Cdhb
Mammalian Cell Selection:	Neomycin
Vector:	pCMV6-AC-GFP (PS100010)
E. coli Selection:	Ampicillin (100 ug/mL)



[View online »](#)

ORF Nucleotide Sequence:

>MG210697 representing NM_001008420
 Red=Cloning site Blue=ORF Green=Tags(s)

TTTTGTAATACGACTCACTATAGGGCGGCCGGAATTCGTCGACTGGATCCGGTACCGAGGAGATCTGCC
 GCC**CGGATCGCC**

ATGCTTACAAGGAACCTTTTATACCTGCTTCTCTGGATCCTGTTTATGAGGTCTCCTAACACCACTTC
 AGCCACAGCCCCAACAGACTTTAGCCACAGAACC AAAAGAAAATGTTATCCACCTTTTCGGGAGACGATC
 CCATTTCCAACGAGTTAAACGTGGCTGGGTATGGAATCAGTTTTTTGTGCTGGAAGAGTACATGGCTCC
 GAACCTCAATATGTGGGGAAGCTGCATTTCGACTTGGATAAAGGAGAGGGCACTGTTAAATACACGCTCT
 CCGGAGATGGTGTGGCACTGTTTTTACAATTGATGAACTACAGGAGACATTTCATGCAATAAGAAGCCT
 GGATAGAGAAGAAAACCTTTCTACACTCTTCGTGCTCAGGCAGTGGACATAGAAACCAGGAAGCCACTG
 GAGCCTGAATCAGAGTTCATCATTAAAGTGCAGGATTAATGACAATGAACCAAAGTTTTTGGATGGAC
 CTTATGTTGCTAGTGTCCAGAAATGTCTCCTGTGGGTGCGTATGTGCTGCAGGTGAAGGCCACAGATGC
 AGACGATCCTACCTATGGGAACAGTCCAGAGTGTTCACAGCATCCTTCAGGGCAACCTTATTTCTCT
 ATTGATCCAAAACAGGTGTCATTAGAACAGCATTGCCAAACATGGACAGAGAAGTCAAAGAGCAGTACC
 AGGTCCTCATTCAAGCGAAAGACATGGGAGGACAGCTCGGAGGACTTGCTGGAACACAGTTGTCAACAT
 CACCCCTACTGATGTCAATGACAACCCACTCGCTTCCAAAAGCATCTTCCATCTGAAAGTCCCGAG
 TCTTCCCTGTTGGCTCAGCTATTGGAAGAATAAGAGCAGTAGATCCTGATTTTGGAAAAATGCAGAAA
 TTGAATACAACATTGTCCAGGAGATGGGGAAATTTGTTTGACATTGTCACAGATGAGGATACACAAGA
 AGGAATCATCAATTGAAAAAGCCTTTAGATTTTGAACCAAGAAGGCATATACTTTTAAAGTAGAGGCC
 TCCAACCTTACCTTGACCACCGCTTTCACTCTGCTGGCCATTTAAGGATACTGCTACAGTAAAAATCA
 GCGTGTGGATGTGGATGAGCCACCAGTGTTCAGCAAAACCCTGTACACCATGGAGGTTTTATGAAGACAC
 TCCTGTGGGGACCATCATCGGAGCTGTCACAGCAAGACCTTGATGTGGGCAGTAGTGCTGTTAGGTAC
 TTCATAGATTGGAAGAGTGTGGGAGAGCTACTTTACAATAGATGGAACGGAAGGAACCATCGCCACTA
 ATGAATTAAGACAGAGAGAACATGGCGCAGTATAATTTCTCCATAATTGCAAGTAAAGTTAGTAACCC
 ATTATTAAGTAAAGTAAACATACTAATTAATGTCCTAGATGTCAATGAATTTCTCCAGAAATATCT
 GTGCCATATGAGACAGCTGTATGTGAGAATGCCAAGCCAGGACAGATAATTCAGATAGTTGGTGTGTAG
 ACCGAGATCTCTACCTGCTGGGACGCAATTCCTTTAGATTAGCACCAGAGGCTGTCAAAACCAAA
 TTTTACAGTCCATGACTTCAGAAACAACACAGCTGGAATCGAAACCCGAAGAAATGGCTATAGCCGCAGG
 CAGCAGGAGTTGATTTCTTCCATTGTAATAGAAGACAGCAGTTATCCTGTCCAGAGCAGCACGAATA
 CAATGACTATTCGTGTTGTAGGTGTGACTCAGATGGGACCATCCTGTCTTGAACGTGGAAGCAATTTT
 TCTACCTGTAGGACTCAGCACTGGAGCTTTGATTGCAATCCTACTATGCATGGTTATACTCTTAGCTATT
 GTTGTGCTGTATGTAGCACTGAGGAGGCAGAGGAAGAAAGACACCCTTATGACCTCTAAAGAAGACATCA
 GAGACAATGTCATCCATTATGACGATGAAGGAGGTGGGGAGGAGGACACCCAGGCCTTTGACATCGGGGC
 TCTGAGAAATCCCAAGGTGATCGAAGAGAACAATAATTCGAGGGATATAAAACCAGACTCCCTCTGTTTA
 TCTCGTCAAAGACCACAAGTGAAGACAACACAGACATAAGGGATTTTATTCACCGAAGGCTACAGGAAA
 ATGACGCAGACCCAGCGGCTCCACCATACGATTCCTTGGCCACTTATGCGTATGAGGGGAATGGCTCAGT
 GGCAGAATCACTCAGCTCCATAGACTCTCTCACCACAGAAGCCGACCAGGACTATGACTATCTATCAGAC
 TGGGGACCCCGCTTAAAGGCTTGGCAGACATGTTTGGAGAAGAAGAGAGTTACAACCCCGACAATGTTA
 CC

ACGCGTACGCGGCCGCTCGAG - GFP Tag - GTTTAA

Protein Sequence: >MG210697 representing NM_001008420
 Red=Cloning site Green=Tags(s)

```

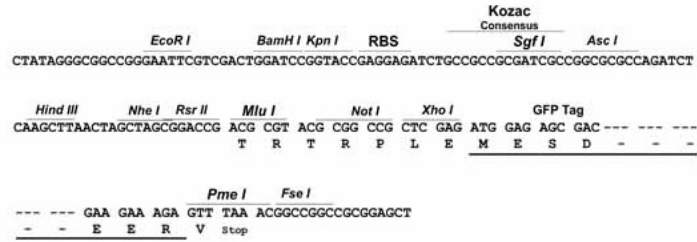
MLTRNSLYLLLWILFDGGLLTPLQPQPQQLATEPKENVIHLSGRRSHFQRVKRGWVWNQFFVLEEYMG
EPQYVGKLHSDLKGEKTVKYTLSGDGAGTVFTIDETTGDIHAIRSLDREKPFYTLRAQAVDIETRKPL
EPESEFIIKVDINDNEPKFLDGPYVASVPEMSPVGAYVLQVKATDADDPTYGNSARVVYSILQGQPYFS
IDPKTGVIRTUALPNMDREVKEQYQVLIQAKDMGGQLGGLAGTTVVNITLTDVNDNPPRFPKSIFHLKVP
SSPVGSAIGRIRAVDPDFGKNAEIEYNI VPGDGGNLFDIVTDEDTQEGIIKLLKPLDFETKKAYTFKVEA
SNLHLDHRFHSAGPFKDTATVKISVLDVDEPPVFSKPLYTMEVYEDTPVGTIIGAVTAQDLVDGSSAVRY
FIDWKSAGESYFTIDGTEGTIATNELLDRENMAQYNFSIIASKVSNPLLT SKVNILINVLVDVNEFPPEIS
VPYETAVCENAKPGQIIQIVGAVDRDLSPAGQQFSFRLAPEAVIKPNFTVHDFRNNTAGIETRRNGYSRR
QQELYFLPIVIEDSSYPVQSSTNTMTIRVCRCDSDGTILSCNVEAIFLPVGLSTGALIAILLCMVILLAI
VVLVVALRRQRKDTLMTSKEDIRDNVIHYDDEGGGEEDTQAFDIGALRNPKVIEENKIRRDIKPDLSLCL
SRQRPQVEDNTDIRDFIHRRLQENDADPAAPPYDSLATYAYEGNGSVAESLSSIDSLTTEADQDYDYLSD
WGPRFKVLADMFGEESYNPDNVT
  
```

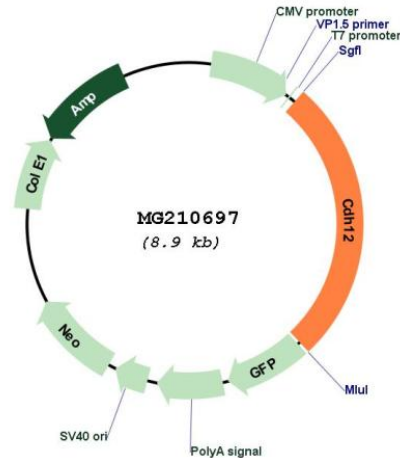
TRTRPLE - GFP Tag - V

Restriction Sites: Sgfl-MluI

Cloning Scheme:

Cloning sites used for ORF Shutting:



Plasmid Map:


ACCN: NM_001008420

ORF Size: 2382 bp

OTI Disclaimer: The molecular sequence of this clone aligns with the gene accession number as a point of reference only. However, individual transcript sequences of the same gene can differ through naturally occurring variations (e.g. polymorphisms), each with its own valid existence. This clone is substantially in agreement with the reference, but a complete review of all prevailing variants is recommended prior to use. [More info](#)

OTI Annotation: This clone was engineered to express the complete ORF with an expression tag. Expression varies depending on the nature of the gene.

Components: The ORF clone is ion-exchange column purified and shipped in a 2D barcoded Matrix tube containing 10ug of transfection-ready, dried plasmid DNA (reconstitute with 100 ul of water).

Reconstitution Method:

1. Centrifuge at 5,000xg for 5min.
2. Carefully open the tube and add 100ul of sterile water to dissolve the DNA.
3. Close the tube and incubate for 10 minutes at room temperature.
4. Briefly vortex the tube and then do a quick spin (less than 5000xg) to concentrate the liquid at the bottom.
5. Store the suspended plasmid at -20°C. The DNA is stable for at least one year from date of shipping when stored at -20°C.

RefSeq: [NM_001008420.2](#), [NP_001008420.1](#)

RefSeq Size: 5666 bp

RefSeq ORF: 2385 bp

Locus ID: 215654

UniProt ID: [Q5R1H3](#)

Cytogenetics: 15 8.25 cM

Gene Summary:

This gene encodes a member of the cadherin family of calcium-dependent glycoproteins that mediate cell adhesion and regulate many morphogenetic events during development. The encoded preproprotein is further processed to generate a mature protein. This gene is expressed in both the excitatory and inhibitory neurons in various areas of the adult central nervous system including the cerebellum, neocortex, hippocampus and in different subcortical nuclei. Multiple distinct genes of the cadherin family, including this gene, are found on chromosome 15. [provided by RefSeq, Nov 2015]