

Product datasheet for **MG210691**

Ptpra (BC050930) Mouse Tagged ORF Clone

Product data:

Product Type:	Expression Plasmids
Product Name:	Ptpra (BC050930) Mouse Tagged ORF Clone
Tag:	TurboGFP
Symbol:	Ptpra
Synonyms:	PTP[a], RPTR[a], PTPalpha, RPTRalpha
Mammalian Cell Selection:	Neomycin
Vector:	pCMV6-AC-GFP (PS100010)
E. coli Selection:	Ampicillin (100 ug/mL)



[View online »](#)

ORF Nucleotide
Sequence:

>MG210691 representing BC050930
 Red=Cloning site Blue=ORF Green=Tags(s)

TTTTGTAATACGACTCACTATAGGGCGGCCGGAATTCGTCGACTGGATCCGGTACCGAGGAGATCTGCC
 GCC**CGCATCGCC**

ATGGATTCCTGGTTCATTCTTGTCTGTTTGGCAGTGGTCTAATACATGTTAGTGCCAACAATGCTACTA
 CAGTTTACCTTCTTTAGGAACGACAAGATTAATTAACAACATCAACAACAGAATTGGCTAAGGAAGAGAA
 TAAAACTCAAATTCAACCTCTTCAGTAATTTCTCTTTCTGTGGCACCAACATTCAGCCAAACCTGACT
 CTGGAGCCACCTATGTGACTACTGTTAATTCTTCACACTCTGACAATGGGACCAGGAGGGCAGCCAGCA
 CGGAATCTGGAGGCACTACCATTCCCCGAACGGAAGCTGGCTTATTGAGAACCAGTTACGGATGCCAT
 AACAGAACCCTGGGAGGGGAACCTCAGCACTGCAGCAACCCTCCAGAAACCTCCCCCGGCAGATGAG
 ACACCAATTATTGCGGTGATGGTGGCCCTGTCTCTCTGCTAGTAATCGTGTATTATCATAGTTCTGT
 ACATGTTAAGGTTAAGAAATACAAGCAAGCTGGTAGTCATTCCAACCTTTCCGCTGTCAAATGGCCG
 CACGGAGGATGTGGAGCCCAAAGTGTACCACTCTGGCCAGGTCCTCAAGCACCACAGGAAGTACCCA
 CCACTGCCTGTGACAAGCTGGAAGAGGAGATTACCGGAGAATGGCTGATGACAATAAGCTCTTCAGAG
 AAGAATCAACGCTCTCCCTGCTTGTCTTATCCAGGCCACCTGTGAGGCTGCCTCCAAGGAAGAAAAACA
 GGAAAAAACCGCTATGTAAACATCCTGCCCTATGACCACTCTAGAGTGACCTGACACCTGTTGAAGGG
 GTCCCAGATTCTGATTACATCAACGCTTCATTCATTAATGGCTACCAGGAAAAGAACAATTCATCGCTG
 CACAAGGACCAAAAAGAAGAACAGTGAATGACTTCTGGAGAATGATATGGGAACAAAACACAGCTACTAT
 TGTGATGGTGACCAACCTGAAGGAGAGAAAGGAGTGAATGTGCCCAACTACTGGCCAGACCAAGGCTGC
 TGGACCTATGGGAATGTCCGTGTCTGTCTGAGGATGTGACTGTTCTGGTGGACTACACAGTACGGAAAT
 TCTGCATCCAGCAGGTGGGCGACTGACCAACAGGAAACCACAGCGCCTCATCACTTCCACTTCAC
 CAGCTGGCCAGACTTTGGGGTGCCTTTACCCCAATTGGCATGCTCAAGTTCCTCAAGAAGGTGAAGGCC
 TGTAAACCCTCAGTACGCAGGGGCTATCGTGGTCCACTGCAGTGCAGGTGTAGGGCGCACTGGCACCTTTG
 TTGTCATCGATGCCATGTGGACATGATGCATTGGAACGCAAAGTGGATGTATACGGGTTTGTGAGCCG
 GATCCGGGCCAGCGCTGCCAGATGGTACAGACAGACATGCAGTACGTCTTCATATACCAGGCCCTTCTG
 GAGCATTATCTGTATGGGGACACAGAAGTGAAGTACTTCTAGAAACCCACCTACAAAAATTTATA
 ACAAGATCCCAGGACGAGCAACAACGGGTTAGAGGAGGAGTTAAGAAATTAACCTCAATCAAAATCCA
 GAATGACAAGATGCGCACGGGAAACCTCCAGCCAACATGAAGAAGAACCAGGTTTACAGATCATTCCA
 TATGAATTTAACAGAGTATCATTCCAGTCAAACGAGGCGAAGAGAACACAGACTATGTGAACGCATCCT
 TCATTGATGGATACCGGCAGAAAGACTCCTACATTGCCAGCCAGGGCCCTTCTCCACACGATTGAGGA
 CTTCTGGCGAATGATCTGGGAGTGAAGTCTGTTCTATCGTAATGCTGACAGAAGTGAAGAGAGAGGC
 CAGGAGAAGTGTGCCAGTACTGGCCATCTGATGGCCTGGTGTCTATGGAGACATCACAGTTGAGCTGA
 AGAAGGAGGAGGAATGTGAAAGCTACACTGTCCGAGACCTCCTGGTCACCAACACCAGGGAGAACAAGAG
 TCGGCAATCCGGCAGTCCACTCCACGGCTGGCCTGAGGTGGGCATCCCCAGCGACGGCAAGGGCATG
 ATCAACATCATTGCAGCAGTGCAGAAGCAGCAGCAGTCCGGGAACCATCCCACACTGTGCACTGCA
 GTGCCGGGGCAGGACGGACAGGAACCTTCTGTGCCTTGTGACACAGTCTTGAACGTGTGAAAGCAGAAG
 AATTTTAGATGTCTTCAAACCTGTCAAGAGCCTGCGGCTGCAGAGGCCACACATGGTCCAGACACTGGAA
 CAGTATGAATTCGCTACAAGGTGGTACAGGAGTACATTGACGCCCTTTTCAGATTATGCCAACTCAAG

ACGCGTACGCGGCCGCTCGAG – GFP Tag – GTTTAA

Protein Sequence: >MG210691 representing BC050930
 Red=Cloning site Green=Tags(s)

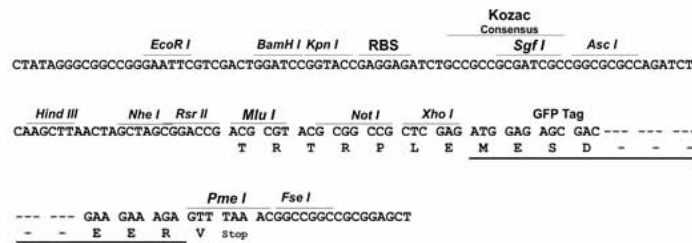
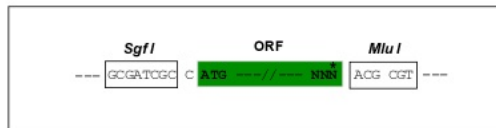
```
MDSWFI LVLFGSGLIHVSANNATTVSPSLGTTTRLIKTSTTELAKEENKTSNSTSSVISLSVAPTFSPNLT
LEPTYVTVNSSHSDNGTRRAASTESGGTTISPNGSWLIENQFTDAITEPWEGNSSTAATTPETFPPE
TPIIAVMVALSSLLVIVFIIIVLYMLRFKYYKQAGSHSNFRLSNGRTEDEVQSVPLLARSPSTNRKYP
PLPVDKLEEEINRRMADDNKLFREEFNALPACPIQATCEAASKEENKEKNRYVNILPYDHSRVHLTPVEG
VPDSYINASFINGYQEKNFIAAQGPKEETVNDFWRMIWEQNTATIVMVTNLKERKECKAQYWPDQGC
WTYGNVRVSVEDVTVLVDYTVRKFCIQVGDVTVNRKPQRLITQFHFTSWPDFGVPFPIGMLKFLKVKVA
CNPQYAGAI VVHCSAGVGRGTGFVVIDAMLDMHSEKVDVYGFVSRIRARQCMVQDTMQYVFIYQALL
EHYLYGDTELEVTSLLEHLQKIYNKIPGTSNNGLEEEFKLTSIKIQNDKMRTGNLPANMKKNRVLQIIP
YEFNRV IIPVKRGEENTDYVNASFIDGYRQKDSYIASQGPLLHTIEDFWRMIWEWKSCSIVMLTELEERG
QEKAQYWP SDGLVSYGDITVELKKEEECESYTVRDLLVTNTRENKSRQIRQFHFGWPEVGI PSDGKGM
INIIAAVQKQQQSGNHPITVHCSAGAGRTGTF CALSTVLERVKAEGILDV FQTVKSLRLQRPHMVQ TLE
QYEF CYKVVQEYIDAFSDYANFK
```

TRTRPLE - GFP Tag - V

Restriction Sites: SgfI-MluI

Cloning Scheme:

Cloning sites used for ORF Shuttling:



ACCN: BC050930

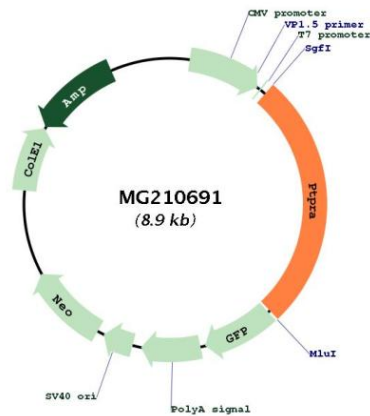
ORF Size: 2381 bp

OTI Disclaimer: The molecular sequence of this clone aligns with the gene accession number as a point of reference only. However, individual transcript sequences of the same gene can differ through naturally occurring variations (e.g. polymorphisms), each with its own valid existence. This clone is substantially in agreement with the reference, but a complete review of all prevailing variants is recommended prior to use. [More info](#)

OTI Annotation: This clone was engineered to express the complete ORF with an expression tag. Expression varies depending on the nature of the gene.

Components:	The ORF clone is ion-exchange column purified and shipped in a 2D barcoded Matrix tube containing 10ug of transfection-ready, dried plasmid DNA (reconstitute with 100 ul of water).
Reconstitution Method:	<ol style="list-style-type: none"> 1. Centrifuge at 5,000xg for 5min. 2. Carefully open the tube and add 100ul of sterile water to dissolve the DNA. 3. Close the tube and incubate for 10 minutes at room temperature. 4. Briefly vortex the tube and then do a quick spin (less than 5000xg) to concentrate the liquid at the bottom. 5. Store the suspended plasmid at -20°C. The DNA is stable for at least one year from date of shipping when stored at -20°C.
RefSeq:	<u>BC050930</u> , <u>AAH50930</u>
RefSeq Size:	2917 bp
RefSeq ORF:	2381 bp
Locus ID:	19262
Cytogenetics:	2 63.23 cM
Gene Summary:	Tyrosine protein phosphatase which is involved in integrin-mediated focal adhesion formation (PubMed:22801373). Following integrin engagement, specifically recruits BCAR3, BCAR1 and CRK to focal adhesions thereby promoting SRC-mediated phosphorylation of BRAC1 and the subsequent activation of PAK and small GTPase RAC1 and CDC42 (PubMed:22801373).[UniProtKB/Swiss-Prot Function]

Product images:



Circular map for MG210691