

Product datasheet for **MG210687**

Vwa5a (NM_172767) Mouse Tagged ORF Clone

Product data:

Product Type:	Expression Plasmids
Product Name:	Vwa5a (NM_172767) Mouse Tagged ORF Clone
Tag:	TurboGFP
Symbol:	Vwa5a
Synonyms:	5830475I06Rik; AW552491; BCSC-1; E130119J22; Loh11cr2a
Mammalian Cell Selection:	Neomycin
Vector:	pCMV6-AC-GFP (PS100010)
E. coli Selection:	Ampicillin (100 ug/mL)



[View online »](#)

ORF Nucleotide Sequence:

>MG210687 representing NM_172767
 Red=Cloning site Blue=ORF Green=Tags(s)

TTTTGTAATACGACTCACTATAGGGCGGCCGGAATTCGTCGACTGGATCCGGTACCGAGGAGATCTGCC
 GCC**CGCATCGCC**

ATGGAGCATCACTGTGGTCTAATCACTAGCAACAAAGAGACAGTACCCTGAAAAATATCTCAGTAACAT
 TGCCATCAATGAATTTGTGGCTGCTGTGGTGGCAACCTTAAATTACGAGAATGAGGAGAAAGTCCCAT
 AGAGGCGACCTTTGTGTTTCTATGGATGAAGACTCTGCTGTCTACAGCTTTGAAGCCTTGGTGGATGGG
 AAGAAAATTGTGGCAGAGTTGCAGGATAAGATGAAGGCTCACAGCGAGTATGAGGAAGCCCTCTCCAGG
 GCCACCAAGCATACTTATTGGAAGAGGATGACTATTCCAGAGATGTCTTTTCTTGAACGTGGGGAACCT
 GCAGCCTGGAGCTAAGGTTGCAGTTACCCTGAGGTATGTGCAGGAAGTCCCTTGGAAACAGATGGGGCC
 CTGCGCTACCTGCTCCAGCAATCTTGAATCCAAGATATCAGCTCTCTGAACAGTCAGCAACAGTTGCT
 TGAACATCCAGAAACCCACAGTCCCTTTGGAAGACCTGCCTTACACACTCAACATGACTGCCACCATCAC
 TCCCAGCATGGTATTGAAAGGGTCCAGTCCAAGTCTCTTTGAGCCCTATTCAGTACCTTACAGATGAC
 AAGACTTCTGCTCAGGTTTCTTACTGACTGAAGGGCACAAGTTTGACCGGGATGTGGAACCTCTGATTTACT
 ACAATGAAGTGCACAGCCCCAGTGTAGCTGTGGAATGGGGATGCTGGACATGAAGCCAGACAGTTTGT
 GGGAGCTCCTTCTGCAATGGTGAAGTTTCTACCCAGATATCCCAGAAGTGGAAAGCCTCAAAGGCTGTGGA
 GAATTTGTGTTTCTATGGACCGTTTCCAGAAAGTATGGACTCCCCCATGAGCACAGAGAACAATTTCTCAGC
 TACGCATCGAGGCTGCCAAGGAACTCTGTTGCTGTTGCTGAAGAGTTTGCCTATGGGTTGTTATTTTAA
 TATCTATGGATTTGGATCTTCTATGAGAAATCTTTCCGGAGAGTGTGAAGTACACTCAGGATACAATG
 GAGGACGCAAGTAAAAGAGTGAAGGCTTTAAAAGCCAACCTAGGGGGTACTGAAATCTTGACACCCCTCT
 GCAACATTTACAAGGCATCCTCCATTCTGGTCAATCCCTACAGCTCTTTGCTTTCAGGGATGGAGAAGT
 GAGTGACACATTTAGTGTCAATAGAGAAGTTAAGTTAAACAGCAAGAAACACAGATGTTTCTCTTTTGGGA
 ATTGGACAAGGAGCCTCGACCAGTTTAATCAAAAAATATCGCCCGGTATCAGGGGGTACTGCAGTGTTTA
 TCACAGGCAAGGACAGGATGCAGACCAAGGCTCTTGGGCTCTCAAGTTTGTCTACAGTGTGCAGTGGGA
 TAACATCTCTAAGTTGGGATTTGCCTCCTGGTTTGTCTGTTAAATGCTTTCTCCAGAGCAACTTACC
 ATCTTTAGGGGTCAGAGGTTAATCATCTATGCACAAGTACTGGGCTTATGCCTCAAGTGGAGAGCACAG
 GAGCAGTGTGCCTCAAGCACATCCTCCAGGATAGGAGTCTGGAAAACAGGGTGCATTTTCCCTGCAACC
 CAAGGCAATGACAATTTCAACATTCATCGTTGGCTGCAAAGTCTTGATTCAGACTAAGGATTTTGGGA
 TCCCAGGAGGCCCAAAGAAGAAAAAGAGATGTGATGAACATCAGCCTTCAGTCTGGAGTCTTACGCT
 CCTTCACAGCCTTCAATGCCATAAACAAGGAGCTGAACAAACAGTGCAGGGGCCCTGGCCACAGAGT
 GATTCCTAGGCCAGTGTGGCTGGATCTAGTAGTATGCGGTTCTACTCCAGTTTCTCTGGTGGCTTTAAA
 GGCCACAGCCAAGAAGTTTACGTGTACCAGCATATGATTTATGTTTACAGCAGAAAGTGTAAATCTTGTCC
 TCAAAAAATCTGCGTGTCTGCTATACAGAAGAAAAAGACAAATCTTCTACCAATAAAAGCAACTTGAA
 AAAGGAACACAAAGCATTGGAGAGAATGCTGTGGTGCAGCTGATTTCTCTCAAAGGCAATGGCTCC
 TGGGAGCTAGATGAAGATTTGACCAAGATCCTGGGCACTAAGTCAAAGACATCAAGGCTGCAAACCCCTG
 CCAAGCATGAGGACCCCTCAGCCTGGTCCACAGTGTGGCTGTGGTCTGGTTGCATGCCAACGGCACAGA
 CTTAAAGTGTGAATGGGAGCTTCTGAAAGGAAGGCTGTGGCCTGGCTTCATGACCATGCAGGTTCTCTC
 ATCCCCATGCTTGTGCAAGCTGCCAATAGTCTCCTGAAATTATCTGTGAATCCTGCTGTCTTTGGCGTC

ACGCGTACGCGGCCGCTCGAG - GFP Tag - GTTTAA

Protein Sequence: >MG210687 representing NM_172767
 Red=Cloning site Green=Tags(s)

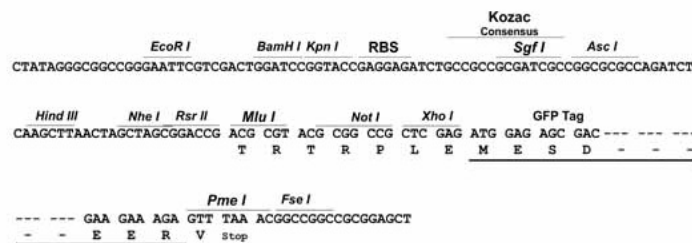
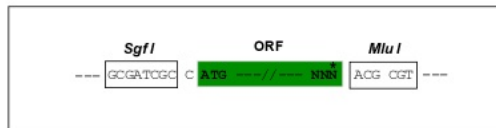
```
MEHHCGLITSNKETVPLKNI SVTLSINEFVAAVVATLNYENEKVPLEATFVFPMDSDSAVYSFEALVDG
KKIVAE LQDKMAHSEYEEAL SQGHQAYLLEEDDYSRDVFS CNVGNLQPGAKVAVTLRYVQELPLETDGA
LRYLLPAILNPRYQLSEQSANSCLNIQKPTVPLEDLPYTLNMTATITSQHGIERVQSNC SLSP IQYLTDD
KTSAQVSLTEGHKFRDVELLIYNEVHSPSVAVEMGLMDMKPDSL MGAPSAMVSYFYPDIPEVEASKACG
EFVFLMDRSGSMDSPMSTENNSQLRIEAAKETLLLLL KSLPMGCYFNIIYGFSSYEKFFPESVKYTQDTM
EDAVKRVKALKANLGGTEIL TPLCNIYKASSIPGHPLQLFVFTDGEVSDTF SVIREVKLNSKKHRCFSFG
IGQGASTSLIKNIARVSGGTAVFITGKDRMQTKALGSLKFALQCAVDNISL SWDLPPGLSVKMLSPEQLT
IFRGQRLIIYAQLTGLMPQVESTGAVCLKHILQGRSLENRVTFSLQPKANDNFTI HRLAAKSLIQTKDFG
SQEASKEEKEDVMNISLQSGVLSSTFAFIAINKELNKPVQGPLAHRVIPRPMAGSSMRFYSSFSGGFK
GPQPRSLRVPAYDLCSAESANLVLKKSACSAIQKKKTN SSTNKS NLKKEHKAFGENAVVQLISLQKANGS
WELDEDLTKILGT KSKDIKAANPAKHEDPSAWSTVLAVVWLHANGTDLKCEWELLERKAVAWLHDHAGSS
IPMLVQAANSL LKLSVNPVAVFGV
```

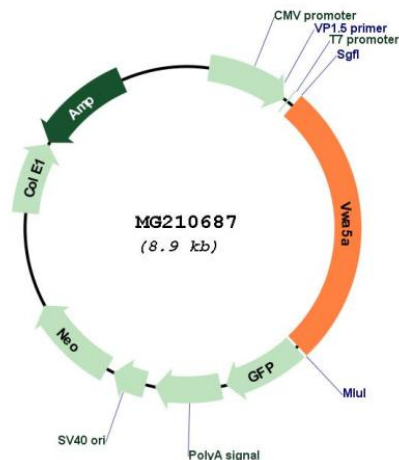
TRTRPLE - GFP Tag - V

Restriction Sites: SgfI-MluI

Cloning Scheme:

Cloning sites used for ORF Shuttling:



Plasmid Map:


ACCN: NM_172767

ORF Size: 4154 bp

OTI Disclaimer: The molecular sequence of this clone aligns with the gene accession number as a point of reference only. However, individual transcript sequences of the same gene can differ through naturally occurring variations (e.g. polymorphisms), each with its own valid existence. This clone is substantially in agreement with the reference, but a complete review of all prevailing variants is recommended prior to use. [More info](#)

OTI Annotation: This clone was engineered to express the complete ORF with an expression tag. Expression varies depending on the nature of the gene.

Components: The ORF clone is ion-exchange column purified and shipped in a 2D barcoded Matrix tube containing 10ug of transfection-ready, dried plasmid DNA (reconstitute with 100 ul of water).

Reconstitution Method:

1. Centrifuge at 5,000xg for 5min.
2. Carefully open the tube and add 100ul of sterile water to dissolve the DNA.
3. Close the tube and incubate for 10 minutes at room temperature.
4. Briefly vortex the tube and then do a quick spin (less than 5000xg) to concentrate the liquid at the bottom.
5. Store the suspended plasmid at -20°C. The DNA is stable for at least one year from date of shipping when stored at -20°C.

RefSeq: [NM_172767.3](#), [NP_766355.3](#)

RefSeq Size: 4121 bp

RefSeq ORF: 2382 bp

Locus ID: 67776

UniProt ID: [Q99KC8](#)

Cytogenetics: 9 A5.1

Gene Summary:

May play a role in tumorigenesis as a tumor suppressor. Altered expression of this protein and disruption of the molecular pathway it is involved in may contribute directly to or modify tumorigenesis (By similarity).[UniProtKB/Swiss-Prot Function]