

## Product datasheet for **MG210684**

### Zc3h11a (BC066163) Mouse Tagged ORF Clone

#### Product data:

Product Type:	Expression Plasmids
Product Name:	Zc3h11a (BC066163) Mouse Tagged ORF Clone
Tag:	TurboGFP
Symbol:	Zc3h11a
Synonyms:	mKIAA0663, Zc3hdc11a
Mammalian Cell Selection:	Neomycin
Vector:	pCMV6-AC-GFP (PS100010)
E. coli Selection:	Ampicillin (100 ug/mL)



[View online »](#)

**ORF Nucleotide Sequence:**

>MG210684 representing BC066163  
 Red=Cloning site Blue=ORF Green=Tags(s)

TTTTGTAATACGACTCACTATAGGGCGGCCGGAATTCGTCGACTGGATCCGGTACCGAGGAGATCTGCC  
 GCC**CGCATCGCC**

ATGCCTAATCAGGGAGAAGACTGCTATTTTTATTCTATTCTACATGCGCCAAAGGTGACAGCTGCCCAT  
 TCCGTCACCTGTGAAGCTGCACTAGGAAATGAAACTGTTTGCACACTATGGCAAGAAGTCGTTGTTTTCG  
 ACAGGTGTGCAGATTTTCGTACATGGAATTTGACAAAAACGAAGTGAATTCCTTGTTATTGGGAAAAT  
 CAGCCAGTGGGATGTCAAAAATAAACTGCGCTTTCATCACACCAGAAGCCGCTATGTTGATGGACTCT  
 TCCTACCTCCAAGCAAACTGTGTTACCCACTGTGCCTGAGTCACAAGAAGAAGAAGTAAAGACTAGCCA  
 GCTCACAGTTCAACAGAGCAAATGTCTGTTCACTAACCCCTCCCCTCAGCTGCGGAGTGAATGAAA  
 GTAGAGAGCTCAGAAAACGTTCCAGCCCCACACATCCGCCTGTTGTAATCAACGCTGCAGATGATGATG  
 AAGATGACGATGATCAGTTTTCTGAGGAGGTGATGAAAGCAAGACACCTGCCCTGCAGCCATCTCTGA  
 CGTCCATAATGGATTACGAGTGGCTTCTGCCCGCAAACCTGGAGTCAGTTAAAGCAAGGTGAATGTTTG  
 AATTTTGGAAATAAAGACTCTTGAGGAAATTAATCAAAGAAAATGAAGGAAAAATCCAAGAAGCAAGGTG  
 AAGGCTCCTCGGGAGTTTCCAGTGTTCACAGCAGCCTCAGCCCAATCCAGGCCCTGAGAAGGAGAATGT  
 TCGGACTGTGGTGAAGATGGTGAAGTCTATCCAGCAAACCAAGAGCCCTTGTTAGACTGAGTCTTTCT  
 GAGAGACTGGGAAAACGAAAACCTTTCAGTGGTGGTGAATGAGTACCCTCCATTAAGCGAAGCCTTGAC  
 AGAGGCTGGGAAAAAAGTGAATCGCCAGAACTAACATTGATAAAGCACCAAGAAAGAGCGAGGTCA  
 TAAAGCTGGGAGATCCATGTGAAGACTGGAAGAAATCTTCTTGAAGAGCCAGTCAGAAACGTGGA  
 GAATTGCAAAACCAACTGAAGGCAGAAGAACCTCAGGAGCCGATGATTTCCATCAGGGACAAAAAGTT  
 CTTCTTCAGTGGGATCAAAACCTTCTCTGAGGTCCTGGCTGAAAAGAAAACCCGGCAGCAGGAAATGGA  
 AAGACAGAAATCCAAAAAGGATACAAGTTGCCTCACGCTAACAGACGACACTGAAATGAAAAAGCAGTG  
 AGTCTGCCACTGTTGCTGTAGCAAAGGACAACCAAGAGGAGCCTGCAGGAAGAGCCAGGCTATGCAGG  
 AGGTGCATATTAAGACTAGAGGAAATTAAGCTGGAGAAGGCCCTGAGGGTGCAGCAAAGCTCTGAGAG  
 TAGTGGCAACTCCGACCTCAAGCTGAGGCTGCCCGAGGACAAAGAGGCTGCTCCGCATACCAAGAGA  
 GCAGGTGTAAAAGAAGAGAAAAATGTGGCCTTGAAGACAGTGGTACCCTCCTCAGAGCAGTGTGACTA  
 AGATGGAGGCTAATGAGACTTCAGATGAGACCATAAGTATCCCACAAAACCTGCAGTCAACAGATGTGA  
 CACTGTCAAAGAGAAAACACACAGAGACTGCAGGAGAGAGGAGCATCACAAAAGGAGAAGGCAGCCTTG  
 TCATCTGTGCGAGGAGATGAGGCTTCTTCTATACCCGAGTGGCGGGAAAGCCGGTCTCACTGCTGTAT  
 CAGGCGTCACTCGGCATCTGGCAAAACGGCTCCCGTGGAGTCATCCAGAAAGGGGAGGTAGAAACCTC  
 CGGAATCGGGACTCAATACTGAATGTGAAATGCGCAGCACAGACTTTGGAGAAGAGGAGTAAAGTCAAA  
 CCCAAAGTAAATGTGAAGCCATCTGTGGTCAAGGTTGTCTCAGCTCCCAAATTGGCTCCCAAACGCAAGG  
 CTGTGGAGATGCACTCTGCCGTATCGCAGCCGTGAAGCCGCTCAGCTCCAGCAGTGTCTGCAGGAAAAG  
 CCCCAAGAAAGCAGCTGTGGCTGTTGTCCCACTCCTCTGAGGATAAAACCCGTACCATGTCTGAG  
 ACAGAAAACCAAAAGACAGTTCGTGCTGTCTCAGCCCAAGCTGCTTCGGAACCCTTGCTCCCGGAAG  
 GCTCTGGCCCTTCTCATCCAGACGGCAACAAAACCCGCGCGGTGAGCTCCGCCTCCAGGGAAAGCC  
 TCCACTCTGTGGAAGATGATTTTGAAGAACTAATATGGGAAATTTAGGGGGCAAATTTGAAGCTGAG  
 ATCGACTTGGATCCTGGGAAGGATGAAGATGACCTTCTGCTTGAAGCTCTCAGAGATGATTGACAGC

**ACGCGT**ACGCGGCCGCTCGAG – GFP Tag – GTTTAA

**Protein Sequence:** >MG210684 representing BC066163  
Red=Cloning site Green=Tags(s)

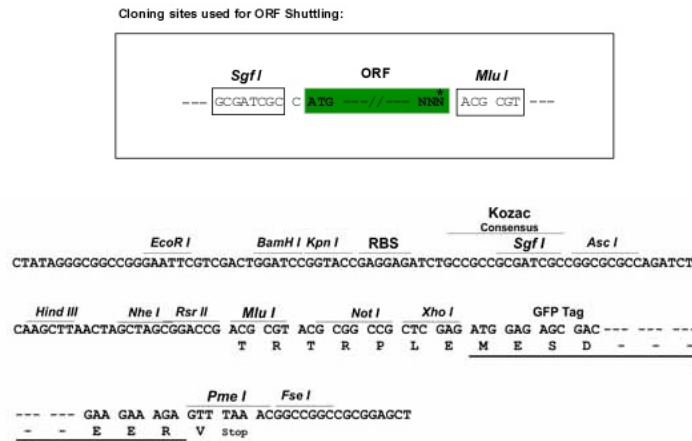
```

MPNQGEDCYFYFYSTCAKGDSCPFHRHCEAALGNETVCTLWQEGRCFRQVCRFRHMEIDKKRSEIPCYWEN
QPVGQCQLNCAFHHTRSRYVDGLFLPPSKTVLPTVPESQEEVKTSQ LTVQQSKLSVQSNPSPQLRSVMK
VESSENVSPTHPPVVINAADDEDDDDQFSEEGDESKTPALQSPDVHNGLRVASARKPGVSLKQGECL
NFGIKTLEEIKSKMKEKSKKQEGSSGVSSVLQQPQPNPGEKENVRTVVRMVTLSKPEEPLVRLSLS
ERLGRKRLSVGGDSDPPLKRSLAQRLGKKVESPETNIDKAPKKERGHKAGEIHVKTLLEEILLERASQKRG
ELQTKLKAEEPSGADDSPTGKSSSSVRIKTFSEVLAEKKHRQQEMERQKSKKDT SCLTLTDDTEMKKT V
SLPTVAVSKGQPEEPAGRARSMQEVHIKTLEEIKLEKALRVQSSSESSGNSRPQAEAAPGTRKLLRITKR
AGVKEEKKCGLEDSGDPQSSVTKMEANETSDETI SDPTKLAVNRCDTVKEKHTQRLQERGASQKEKAAL
SSVRGDEASSYTRVAGKPVLTAVSGVTRHLAKR LPESSQKGEVETSGIGDSILNVKCAAQTLEKRSKVK
PKVNVKPSVVKVVSAPKLAPKRKAVEMHSAVIAAVKPLSSSSVLQESPTKKA AVAVVPLLSEDKPVTMSE
TENPKDSSVLSAQAA SEPLLPEGSGPSSQTATKPRRLSSASTGKPLSVEDDFEKL IWEISGGKLEAE
IDLDPGKDEDDLLELSEMIDS
    
```

TRTRPLE - GFP Tag - V

**Restriction Sites:** SgfI-MluI

**Cloning Scheme:**



**ACCN:** BC066163

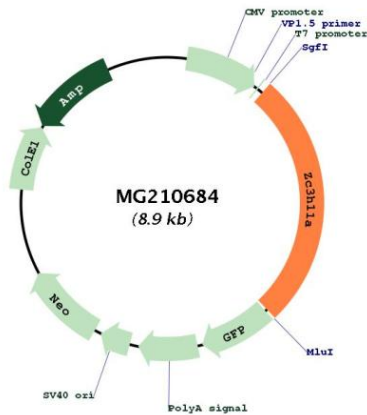
**ORF Size:** 2376 bp

**OTI Disclaimer:** The molecular sequence of this clone aligns with the gene accession number as a point of reference only. However, individual transcript sequences of the same gene can differ through naturally occurring variations (e.g. polymorphisms), each with its own valid existence. This clone is substantially in agreement with the reference, but a complete review of all prevailing variants is recommended prior to use. [More info](#)

**OTI Annotation:** This clone was engineered to express the complete ORF with an expression tag. Expression varies depending on the nature of the gene.

- Components:** The ORF clone is ion-exchange column purified and shipped in a 2D barcoded Matrix tube containing 10ug of transfection-ready, dried plasmid DNA (reconstitute with 100 ul of water).
- Reconstitution Method:**
1. Centrifuge at 5,000xg for 5min.
  2. Carefully open the tube and add 100ul of sterile water to dissolve the DNA.
  3. Close the tube and incubate for 10 minutes at room temperature.
  4. Briefly vortex the tube and then do a quick spin (less than 5000xg) to concentrate the liquid at the bottom.
  5. Store the suspended plasmid at -20°C. The DNA is stable for at least one year from date of shipping when stored at -20°C.
- RefSeq:** [BC066163.1](#)
- RefSeq Size:** 2815 bp
- RefSeq ORF:** 2378 bp
- Locus ID:** 70579
- Cytogenetics:** 1 E4
- Gene Summary:** Involved in nuclear mRNA export; probably mediated by association with the TREX complex. [UniProtKB/Swiss-Prot Function]

**Product images:**



Circular map for MG210684