

Product datasheet for **MG210680**

Nek4 (NM_011849) Mouse Tagged ORF Clone

Product data:

Product Type:	Expression Plasmids
Product Name:	Nek4 (NM_011849) Mouse Tagged ORF Clone
Tag:	TurboGFP
Symbol:	Nek4
Synonyms:	Stk2
Mammalian Cell Selection:	Neomycin
Vector:	pCMV6-AC-GFP (PS100010)
E. coli Selection:	Ampicillin (100 ug/mL)



[View online »](#)

ORF Nucleotide
Sequence:

>MG210680 representing NM_011849
 Red=Cloning site Blue=ORF Green=Tags(s)

TTTTGTAATACGACTCACTATAGGGCGGCCGGGAATTCGTCGACTGGATCCGGTACCGAGGAGATCTGCC
 GCCGCGATCGCC

ATGCCCCAGGCCGATACTGCTACATGCGGGTCTGTGGCAGGGGTAGTTACGGGGAGGTGACGCTCGTGA
 AGCATCGGCGAGACGGCAAGCAGTATGTATCAAAAAGCTGAACCTCCGAAATGCCTCCAGCCGAGAGCG
 TCGAGCTGCTGAGCAGGAAGCTCAGCTCCTATCTCAGTTGAAGCACCCCAACATTGTCACCTACAAAGAA
 TCATGGGAGGGAGGAGACGGTCTGCTCTACATTGTCATGGGCTTCTGCGAAGGAGGTGATCTGTACCGGA
 AGCTCAAGGAGCAGAAAGGGCAGCTTCTGCCTGAGAGTCAGGTGGTGGAGTGGTTTGTCCAGATCGCCAT
 GGCCTTGCACTTTTACATGAGAAACACATCCTTCATCGAGATCTGAAAACCTCAGAATGTCTTTAAACA
 AGAACAAACATCATCAAAGTGGGGACCTAGGAATTGCCCGCTTCTAGAGAATCACGGTGACATGGCGA
 GCACCTCATTGGCACACCTATTACATGAGCCCTGAGCTGTTCTCAACAAACCCTACAACATAAGTC
 GGATGTTTGGGCTTTGGGATGCTGTGTATGAAATGGCCACCCTGAAGCAGCTTTTAAATGCAAAAAGAC
 ATGAATTCCTTTAGTTTATCGGATTATTGAAGGAAAGTTGCCGCAATGCCAAAAGTTTACAGCACAGAGC
 TGGCTGAGCTGATAAGAACAATGCTGAGCAGAAGGCTGAGGAGAGGCCCTCTGTGCGGAGCATCCTGAG
 GCAGCCCTACATAAAAACCCACATCTCCTTGTCTTGGAGGCCACCAAGGCAAAAACCTCCAAAAATAAT
 GTTAAAAACTGTGACTCCAGAGCCAAGCCTGTTGCTGCTGTAGTTTCCAGAAAAGGAAGAAATCAAATACTG
 ACGTGATACTACCAGCCACGCTCTTCTGAGGGCTCTGCTTTGCATGTCATGGTGAAGATAAATGTTT
 GTCCCAAGAGAAACCAGTGGACATTGGTCCCTTGAGATCACCGGCTAGTCTTGAAGGCCACACTGGCAAA
 CAAGACATGAACAATACTGGGGAGTCATGTGCCACAATCAGTAGGATAAATATCGATATCTTACCTGCAG
 AAAGGAGGGACTCAGCGAACGCTGGTGTAGTTTCAAGGAGGCCAACCAACACACGTGGATGCCGCTGATGA
 AGTAGACAGTCAGTGCAGTATTTCTCAAGAGAAGGAGAGGCTACAGGGCAATACCAAGTCCAGTGATCAG
 CCTGAAAATCTCCTTCCAGACGGTCTCTGATGGTGGTATGGGGAAGGGAGTGAAGTGGTGAAGCCAT
 TGTATCCCTCAAATAAAGACCAAAAGCCAGACCAGGATCAAGTACTGGTATTATAGAAAATCAGGACAG
 CATCCACCAAGATCCCAGCCACACAGCTCTATGTCTGAACCTTCTTTGTCCCGGAGCGAAGGCAGAAA
 AAAAGGGAACAGACTGCCATAGTCGTACAAAGAGCCAGTTCCAAGAATTACCCCTCGGCTTTTGCCTT
 CTTATCCTGGTATTGGGAAAGTGGATATCATAGCAACACAGCAAATGATGGAACCAAGGTGGACCTGT
 GGCTGGTGTGTAAACAGTTCAAGGACCAGCTCAACAGCATCAGCAAAGGATCGACCATTATCAGCCAGA
 GAGAGGAGACGGCTAAAGCAGTCACAGGAGGAGATGCTGCCCTCAGGCCCTGCAGTTCAGAGAATCCAA
 GTGCAGTTGAGCCACTGAAACCACAGGAAGAAGACCAACCCATCCTGCCAACGATTCTTCTGACTG
 CAGCATCACTCAGATGAATCACACTCCCGAGGGAAAAGGAGAAGAGGCTGATGCATGGCTGTCTGAG
 GATGAGTTAAGCTCTTCTACAAGCTCAACTGATAAGTCAGATGGGGATTCCAGGGAGGGGAAGAGTCATA
 CAAATGAAATGAAAGACTTGGTACAGCTGATGACTCAGACTCTGAGGCTGGAAGCTAAGGAGAGCTGTGA
 AGATCTCCAGGTCTAAACCCAGGGTCAGAATTCAGACTTCATCGAAAAGTATCGAGACACGCTGGTCTT
 CATGGCAAGGTTGCAGAAGAGGTGGAACCCACTGTACGGAGCTGCCTACGGGTATCATACCAGGTTCTG
 AAAAGATCAGGAGAATCGTTGAAGTCTTAAGAGCTGATGTAATCCAGGGCCTGGGATTCAACTTTAGA
 GCAGGTGTTTGTCTTTTGGGAGAGGAAGATGAGTTGGAGAGAGAGGCACGATTACAGGAGCACATGGGA
 GACAAGTATACAACCTACTGTGTGAAAGCTCGCCAATTGAAATTTTTTGAAGAAAATGTGAGTTTT

ACGCGTACGCGGCCGCTCGAG – GFP Tag – GTTTAA

Protein Sequence: >MG210680 representing NM_011849
 Red=Cloning site Green=Tags(s)

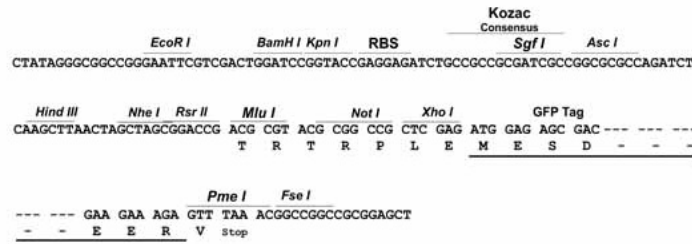
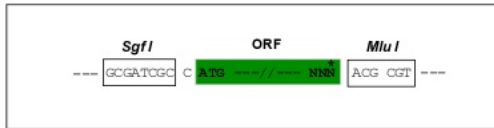
MPQAAYCYMRVVGGRGSYGEVTLVKHRRDGKQYVIKKLNLNRNASSRERRAAEQEAQLLSQLKHPNIVTYKE
 SWEGGDGLLYIVMGFCEGGDLYRKLKEQKQQLLPESQVVEWFVQIAMALQYLHEKHILHRDLKTQNVFLT
 RTNIIKVGDLGIARVLENHGDMASTLIGTPYYMPELFSNKPYNYSKSDVWALGCCVYEMATLKHAFAKAD
 MNLSLYRIIEGKLPMPKVYSTELAEIIRTMLSRPEERPSVRSILRQPYIKHHISLFLEATKAKTSKNN
 VKNCDSDRAKPVAAVVSRRKEESNTDVIHYQPRSSSEGSALHVMGEDKCLSQEKPVDIIGPLRSPASLEHTGK
 QDMNNTGESCATISRINIDILPAERRDSANAGVVQESQPQHVDAADEVDSQCSISQEKERLQGNTKSSDQ
 PGNLLPRRSSDGGDGESELVKPLYPNSKDQKPDQDQVTGIIENQDSIHPRSQPHSSMSEPSLSRQRRQK
 KREQTAHSRTKSQFQELPPRLPSYPGIGKVDIIATQQNDGNQGGPVAGCVNSSRSTASAKDRPLSAR
 ERRRLKQSQEMLPSGPAVQRTPSAVEPLKQEEQPIPAQRFSSDCSITQMNHTLPREKEKRLMHGLSE
 DELSSSTSDTKSDGDSREGKSHTNEMKDLVQLMTQTLRLLEAKESCEDLQVLNPGSEFRLHRKYRDTLVL
 HGKVAEEVEPHCTELPTGIIPGSEKIRRIVEVLRADVIQGLGIQLLEQVFDLLGEEDELEREARLQEHMG
 DKYTTYCVKARQLKFFEENVSF

TRTRPLE - GFP Tag - V

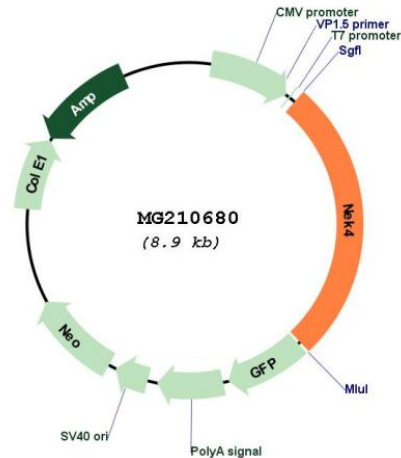
Restriction Sites: SgfI-MluI

Cloning Scheme:

Cloning sites used for ORF Shuttling:



Plasmid Map:



ACCN: NM_011849

ORF Size: 2376 bp

OTI Disclaimer: The molecular sequence of this clone aligns with the gene accession number as a point of reference only. However, individual transcript sequences of the same gene can differ through naturally occurring variations (e.g. polymorphisms), each with its own valid existence. This clone is substantially in agreement with the reference, but a complete review of all prevailing variants is recommended prior to use. [More info](#)

OTI Annotation: This clone was engineered to express the complete ORF with an expression tag. Expression varies depending on the nature of the gene.

Components: The ORF clone is ion-exchange column purified and shipped in a 2D barcoded Matrix tube containing 10ug of transfection-ready, dried plasmid DNA (reconstitute with 100 ul of water).

Reconstitution Method:

1. Centrifuge at 5,000xg for 5min.
2. Carefully open the tube and add 100ul of sterile water to dissolve the DNA.
3. Close the tube and incubate for 10 minutes at room temperature.
4. Briefly vortex the tube and then do a quick spin (less than 5000xg) to concentrate the liquid at the bottom.
5. Store the suspended plasmid at -20°C. The DNA is stable for at least one year from date of shipping when stored at -20°C.

RefSeq: [NM_011849.3](#)

RefSeq Size: 2714 bp

RefSeq ORF: 2379 bp

Locus ID: 23955

UniProt ID: [Q9Z1J2](#)

Cytogenetics: 14 B

Gene Summary:

Required for normal entry into proliferative arrest after a limited number of cell divisions, also called replicative senescence. Required for normal cell cycle arrest in response to double-stranded DNA damage (By similarity). Protein kinase that seems to act exclusively upon threonine residues.[UniProtKB/Swiss-Prot Function]