

Product datasheet for **MG210675**

Atxn1 (NM_009124) Mouse Tagged ORF Clone

Product data:

Product Type:	Expression Plasmids
Product Name:	Atxn1 (NM_009124) Mouse Tagged ORF Clone
Tag:	TurboGFP
Symbol:	Atxn1
Synonyms:	2900016G23Rik; Atx1; C85907; ENSMUSG00000074917; Gm10786; Sca1
Mammalian Cell Selection:	Neomycin
Vector:	pCMV6-AC-GFP (PS100010)
E. coli Selection:	Ampicillin (100 ug/mL)



[View online »](#)

ORF Nucleotide Sequence:

>MG210675 representing NM_009124
 Red=Cloning site Blue=ORF Green=Tags(s)

TTTTGTAATACGACTCACTATAGGGCGGCCGGGAATTCGTCGACTGGATCCGGTACCGAGGAGATCTGCC
 GCC**CGGATCGCC**

ATGAAATCCAACCAAGAGCGGAGCAACGAATGCCTGCCTCCCAAGAAACGTGAGATCCCCGCCACCAGCC
 GGCCCTCGGAGGAGAAGGCCACTGCTCTGCCACGCAACAACACTGCGTGAGGGGTGGCCTGGCTCCC
 CAGCACCCCTGGCATCCGCGCCATGGGGTGGCGGCACGGGTACGAGGGACTTCCGGGAGCATGGT
 TTACAAGGAATGGGTTTACATAAAGCACTGTCCGACGGGTGGATTACTCCCCACCCAGTGCCCCAGGT
 CAGTCCCCACAGCCAACACGCTGCCACCGTGTACCTCCTCAGTCAGGGACCCCGTGTCTCTGT
 GCAGTACGCCACCTTTCGCATACCTTCCAGTTTATTGGTCTCCCAATACAGTGGGCCTTACGCGGGC
 TTTATCCCTTCCAGTGATCTCCCATCAGGCAACCCGGTACCAGTGCAGTAGCCTCAGTGCAGGGG
 CCACCACTCCATCACAGCGCTCCAGCTGGAGGCTTATCCACCCTGCTGGCCAACATGGCAGTCTGAG
 CCAGGCACAGGACATAAGGTTGAGCCCCCTCCGACGACACCTCAGCAGGGCTGCAGGATTAGTCAAC
 CCGGGGTCCCCTCCTCCACCACCCAGCAGAACCAGTACATCCATATTTCCAGCTCTCCACAGAGCTCCG
 GCGGGGCGACATCTCCCCACCCATCCCGTCCACCTCCATCCCCATCAGACGATGATCCCGCACACACT
 CACCCTGGGGCCTTATCCCAGGTGGTGTGCAATATAGTGATGCCGGAGGCCACTTTGTTCTCGAGAG
 TCCACCAAAAAAGCCGAGAGCAGCAGGTTGACGAGGCTATGCAAGCCAAGGAAGTCTGAATGGGGAGA
 TGGAGAAAAGCCGGAGGTATGGGCATCATCTTCTGTGGAGTGAGCCTAGGCAAGGCAAGCAGTAAATC
 AGTGCCTCATCCCTATGAGTCCAGGCATGTGGTGGTCCACCAAGCCAGCAGACTACAGCAGTCGTGAT
 ACCTCCGGGTCCGTGGATCTGTGATGGTCTGCCTAATAGCAGCACACCCTCAGCCGACCTGGAGGCC
 AGCAGACCAGCATCGAGAGCCCTCCCCATCCACCCTCAATGACAAGAGCGGCCCTGCACCTAGGGAAGCC
 GGGCCACAGGTCTTATGCGCTGTCCCCACACGGTCATTACAGACCACACACAGTGCATCAGAGCCTCTC
 CCGGTGGGCTACCAGCCACGGCCTTCTACGCTGGCACTCAACCTCCTGTGATCGGCTACCTGAGCGGCC
 AGCAGCAAGCAATCACCTATGCTGGTGGTCTGCCGACGACCTGGTATCCCAGGTAACCAGCCCTGCT
 CATCCCGGTGGGAGCCCTGACATGGACACGCCTGGGGCAGCCTCGGCCATCGTGACGTCATCACCCAG
 TTTGCTGCAGTACCTCACAGTTTGTACCACCGCCCTGCCAAGAGCGAGAACTTCAACCAGAGGCTC
 TGGTACCAGGCTGCCTACCCAGCCATGGTGCAGGCCAGATCCACCTGCCGGTGGTGCAGTCCGTGGC
 GTCCCCACCACGGCTCTCCACGCTGCCGCATATTTTCATGAAAGGCTCCATCATCCAGCTGGCCAAC
 GGGGAGCTGAAGAAGGTGGAGGACCTGAAGACGGAGGATTTTCATCCAGAGTGCAGAGATTAGCAATGACC
 TCAAGATCGACTCCAGTACTGTGAGAGAATCGAGGAGAGCCACAGCCCCGGGTGGCCGTGATACAGTT
 TGCTGTTGGTGAACCCGAGCCAGGTCAGTGTGGAAGTCTTGGTAGAGTATCCTTTTTTTGTATTTGGA
 CAGGGCTGGTATCCTGTCTGCTGAGCGGACCAGCCAGCTCTTTGATCTGCCGTGTTCCAACTCTCTG
 TTGGGGAGCTCTGCATCTCGTCCACCTCAAGAACCTGAAGAATGGCTCTGTTAAAAAGGGCCAGCCTGT
 GGACCCTGCCAGCGTCTGCTGAAGCAGGCAAAGACCCAGCCTGGCTGGCAGCAGACACAGATACGCG
 GAGCAGGAAAACGAATCAACCAGGGAAGCGCCAGGTGCTCTGAGAATGGCGAACTGAAGTTTCCAG
 AAAAAATAGGATTGCCTGCAGCACCTTCTCAGCAAAAATAGAACCAGGCAAACCCACAGCCACGAGGAA
 GAGGAGGTGGTCGGCGCCGGAGACCCGTAACCTGGAGAAGTCGGAGGACGAGCCACCTTTGACTTCCC
 AAGCCTTCGCTCATTCTCAGGAGGTTAAGATCTGCATCGAAGGCCGATCTAACGTGGGCAAG

ACGCGTACGCGGCCGCTCGAG - GFP Tag - GTTTAA

Protein Sequence: >MG210675 representing NM_009124
 Red=Cloning site Green=Tags(s)

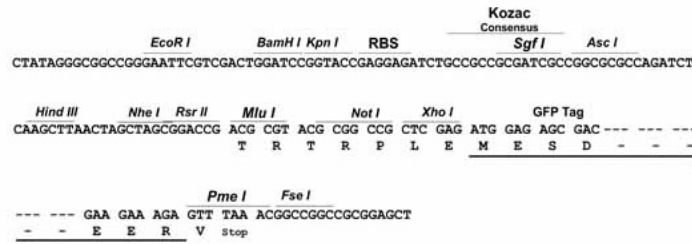
MKSNQERSNECLPPKKREIPATSRPSEEKATALPSDNHCVEGVAWLPSTPGIRGHGGRRHGSAGTSGEHG
 LQGMGLHKALSAGLDYSPPSAPRSVPTANTLPTVYPPPPQSGTPVSPVQY AHL SHTFQFIGSSQYSGPYAG
 FIPSQLISP SGNPVTS AVASAA GATTPSQR S QLEAYSTLLANMGSL SQAPGHKVEPPPQQHL SRAAGLVN
 PGSPPPP TQQNQYIHISSSPQSSGRATSPPP I PVHLHPHQ TMI PHTL TLGPSSQVVVQYSDAGGHFVPRE
 STKKAESSRLQQAMQAKEVLNGEMEKSRRYGASSVELSLGKASSKSVPHPYESRHVVVHPSPADYSSRD
 TSGVRGSVMVLPNSSTPSADLEAQQTTTHREASPSTLNDK SGLHLGKPGHRSYALSPHTVIQTTHSASEPL
 PVGLPATAFYAGTQPPVIGYLSGQQQAITYAGGLPQHLVIPGNQPLLIPVGPDMTPGAASAIVTSSPQ
 FAAVPHTFVTALPKSENFNPEALVTQAAYPAMVQAQIHLPVVQSVASPTTASPTLPPYFMKGSIIQLAN
 GELKKVEDLKTEDFIQSAEISNDLKIDSSTVERIEESHSPGVAVIQF AVGEHRAQVSVEVLVEYPFFVFG
 QGWSSCCPERTSQLFDLPCSKLSVGDVCSLTLK N LKNGSVKKGQPVDPASVLLKQAKTDSL AGRHRYA
 EQENGINQGS AQLSENGELKFPEKIGLPAAPFLSKIEPSKPTATRKRRWSAPETRKLEKSEDEPPLTLP
 KPSLIPQEVKICIEGRSNVGK

TRTRPLE - GFP Tag - V

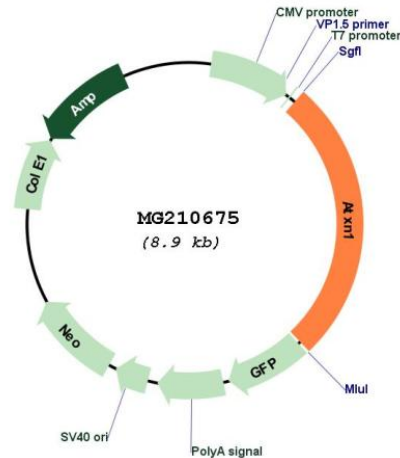
Restriction Sites: SgfI-MluI

Cloning Scheme:

Cloning sites used for ORF Shuttling:



Plasmid Map:



ACCN: NM_009124

ORF Size: 2373 bp

OTI Disclaimer: The molecular sequence of this clone aligns with the gene accession number as a point of reference only. However, individual transcript sequences of the same gene can differ through naturally occurring variations (e.g. polymorphisms), each with its own valid existence. This clone is substantially in agreement with the reference, but a complete review of all prevailing variants is recommended prior to use. [More info](#)

OTI Annotation: This clone was engineered to express the complete ORF with an expression tag. Expression varies depending on the nature of the gene.

Components: The ORF clone is ion-exchange column purified and shipped in a 2D barcoded Matrix tube containing 10ug of transfection-ready, dried plasmid DNA (reconstitute with 100 ul of water).

Reconstitution Method:

1. Centrifuge at 5,000xg for 5min.
2. Carefully open the tube and add 100ul of sterile water to dissolve the DNA.
3. Close the tube and incubate for 10 minutes at room temperature.
4. Briefly vortex the tube and then do a quick spin (less than 5000xg) to concentrate the liquid at the bottom.
5. Store the suspended plasmid at -20°C. The DNA is stable for at least one year from date of shipping when stored at -20°C.

RefSeq: [NM_009124.6](#)

RefSeq Size: 5425 bp

RefSeq ORF: 2376 bp

Locus ID: 20238

UniProt ID: [P54254](#)

Cytogenetics: 13 21.98 cM

Gene Summary:

Chromatin-binding factor that repress Notch signaling in the absence of Notch intracellular domain by acting as a CBF1 corepressor. Binds to the HEY promoter and might assist, along with NCOR2, RBPJ-mediated repression (By similarity). May be involved in RNA metabolism (By similarity). In concert with CIC and ATXN1L, involved in brain development (PubMed:28288114).[UniProtKB/Swiss-Prot Function]