

Product datasheet for **MG210670**

Tarsl2 (NM_172310) Mouse Tagged ORF Clone

Product data:

Product Type:	Expression Plasmids
Product Name:	Tarsl2 (NM_172310) Mouse Tagged ORF Clone
Tag:	TurboGFP
Symbol:	Tarsl2
Synonyms:	A530046H20Rik
Mammalian Cell Selection:	Neomycin
Vector:	pCMV6-AC-GFP (PS100010)
E. coli Selection:	Ampicillin (100 ug/mL)



[View online »](#)

ORF Nucleotide Sequence:

>MG210670 representing NM_172310
 Red=Cloning site Blue=ORF Green=Tags(s)

TTTTGTAATACGACTCACTATAGGGCGGCCGGAATTCGTCGACTGGATCCGGTACCGAGGAGATCTGCC
 GCC**CGGATCGCC**

ATGGCGGCCAGGCCCTGGCGGCTCAGGCGGTGGCTCGCGCCTGCACGGCAGGAGGAGACATCCGCT
 GGCTGTGCGCGGAGGTGCAGCGCCTGAGGGACGAGCAGCTGCGCGGGCCGAGCGGGGCCAAGCCGAGGG
 CCCGCGCCTGACACGCGAGGTGGCACAGCTCCAGGCGGAGAACC GCGACCTGCACCAGCGCCTGTGTGGC
 CTGCGGCTGCGCCTGGCGGAGCAGCGCCGACCCAGGCGGGGCGAGCGCGGCGCACGAGCCTCCTACCC
 AAAACCAAGAGAAGGACACAAAGAAGAAGAGGCTGAAGCAGAGTGAGCCTGGCCGGGAGGTGAAGCAACC
 GAATTTTATAAAAAGAGAGATTGCAGCTTTTGAACATTGAAGACAGATCATCAACTGTTACCTGCTACT
 CAGGAAAAGAAGAACACAAACACGTGATTTCAAGTGCCGCTGGAATTAGTAAGGAATTGGCTGAACATACAGTATTGC
 CAAAGTGAACGGTGTATTGTGGGATCTGGACCGCCGTTGGAAGGGGACTCCACTGTGGAGCTGCTGATG
 TTTGACAACGAGGAAGCCAGGCTGTGTACTGGCATTCCAGCGCTCACATCCTGGGGGAGGCCATGGAAC
 TTTACTATGGAGGCCACCTGTGTATGGCCACCCATTGAAAATGGGTTTTATTATGATATGTTATTGA
 AGACAGAGTGGTGTCCAGCACTGAGTTGTCTGCCCTGGAGAACATATGTA AAACTATCATCAAAGAAAAG
 CAACCGTTTGAAGACTGGAAGTCAGCAAGGACACTCTCCTGGAAATGTTTAAAGTACAATAAATTTAAGT
 GCCGGATTCTGAAGGAGAAAAGTGGACACTCCGACGACCACTGTTTACAGGTGTGGTCCATTGATTGACCT
 TTGTAAGGCCCCCATGTAAGACACACTGGAAAAATTAAGCCATAAAAAATTTCAAGAACTCCTCAACA
 TATTGGGAAGGCAACCCCTGAGATGGAACTTTGCAGCGGATCTATGGGATATCCTTTCTGACAGCAAAA
 TGATGAAAGACTGGGAAAAATCCAAGAGGAAGCCAAGAGCCGGACACAGGAAAAATCGGGAAGGAACA
 AGAACTTTTCTTCCATGATCTGAGCCCTGGAAGCTGTTTTTCTCCGAGAGGAGCGTTCATTAC
 AATGCGCTTATGGATTCATACGAGAGGAATATCACAAAGCGTAACCTCACAGAAGTGCTCTCTCCCAACA
 TGTACAACAGTAAACTCTGGAAACATCAGGCCACTGGCAGCATTACAGTAAACAATGTTACACCTTTGA
 CGTCGAGAAGGACACTTTGCCCCCAAACCCATGAACTGTCCAGGGCACTGTTTAAATGTTGCGACATCGC
 CCGCGATCCTGGAGGAAATGCCTGTTAGATTTGCTGATTTTGGAGTTCTTACAGAAATGAGCTGTCAG
 GCACTTTAAGCGGCTTAACCCGAGTGAGGCGCTTCCAGCAAGATGATGCGCACATCTTCTGCATGGTGA
 GCAGATCGAAGAAGAAATAAAGGGGTGCTTGCACTTTTTACAGTCCGTTTACTCGACGTTTGGCTTCTCC
 TTTCAATTAACCTGTCCACAAGCCTGAGCACTTCTAGGAGAGATTGAGATATGGGATGAAGCTGAAA
 GGCAACTGCAGAACAGCTTGGTGGAAATTTGGAAAACCATGGAAAATAAACCCAGGAGATGGAGCATTCTA
 TGGCCCTAAAATCGATATAAAAAATTAAGATGCTATTGGCAGATACCATCAGTGTGCTACAATTCAGCTG
 GACTTCCAACCTGCCTATCAGGTTAACCTCACATATGTGAGTAAGGATGGGGATGACAAGAACAGGCCTG
 TGATCATTACC GCGCCATCCTGGGGTCTGTGGAAAGGATGATAGCCATCCTCTCAGAGAACTACGGGGG
 GAAATGGCCTCTCTGGCTGTCCCTCGCCAGGTAATGGTCATCCCAGTAGGCCAGCTTGTGAAAATTA
 GCACTACAGGTGTCCAAGGAATGCTTCGAAGAAGGCTTCATGGCCGATGTGGACTTAGATGACAGTTGTA
 CACTAAATAAGAAAATACGGAATGCACAGCTGGCTCAGTATAATTTCAATTTGGTGGTTGGCGAAAAGGA
 AAAGATCAACAATGCAGTAAATGTTGCAACAAGAGACAACAAAATTCATGGAGAAATATCAATAGCTTCC
 GTCATTGAAAAATTAAGAACCTCAAAAAATCACGTACGCTAAATGCCGAGGAAGACTTC

ACGCGTACGCGGCCGCTCGAG - GFP Tag - GTTTAA

Protein Sequence: >MG210670 representing NM_172310
 Red=Cloning site Green=Tags(s)

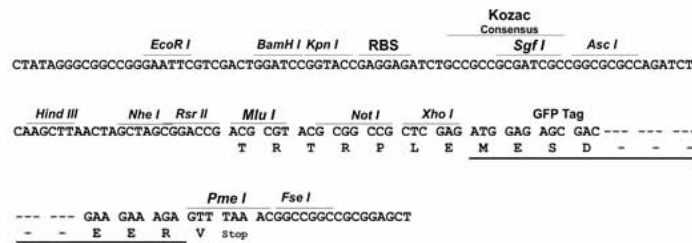
MAAQUALAAQAVASRLQRQEEDIRWLCAEVQRLRDEQLRGPERRGQAEPRLTREVAQLQAENRDLHQRLCG
 LRLRLAEQRRTEAGRAAAHEPPTQNQEKDTKKKRLKQSEPGREVKQPNFIKERLQLFETLKDHLQLLPAT
 QEKKNTNNVISVRVAGGKTVQGERWKTTPYQVAAGISKELAHTVIKAVNGVLWDLDRPLEGDSTVELLM
 FDNEEAQAVYWHSSAHILGEAMELYYGGHLCYGPPIENGFYYDMFIEDRVVSSTELSALENICKTIIKEK
 QPFERLEVSKDTLLEMFYKFKCRILKEKVDTPTTTTVYRCGPLIDLCKGPHVRHTGKIKAIKIFKNSST
 YWEGNPEMETLQRIYGISFPDSKMMKDWEKFQEEAKSRDHRKIGKEQELFFFHDLSPGSCFFLPRGAFIY
 NALMDFIREEYHKRNFTVLSNMYNSKLWETSGHWQHYSNMFTFDVEKDTFALKPMNCPGHCLMFAHR
 PRSWREMPVRFADFGVLHRNELSGTSLGLTRVRRFQQDDAHIFCMVEQIEEIKGCLHFLQSVYSTFGFS
 FQLNLSTRPEHFLGEIEIWDEAERQLQNSLVEFGKPKINPGDGAFYGPKIDIKIKDAIGRYHQCATIQ
 DFQLPIRFNLTYVSKDGGDDKNRPVIIHRAILGVERMIAILSENYGKWLWLSRQVMVIPVGPACENY
 ALQVSKCEFEFGMADVLDLDDSTLNKKIRNAQLAQYNFILLVGEKEKINNAVNVTRDNKIHGEISIAS
 VIEKLNKLSRNLNAEEDF

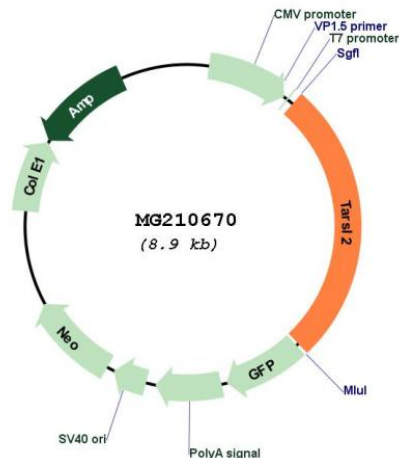
TRTRPLE - GFP Tag - V

Restriction Sites: SgfI-MluI

Cloning Scheme:

Cloning sites used for ORF Shuttling:



Plasmid Map:


ACCN: NM_172310

ORF Size: 2370 bp

OTI Disclaimer: The molecular sequence of this clone aligns with the gene accession number as a point of reference only. However, individual transcript sequences of the same gene can differ through naturally occurring variations (e.g. polymorphisms), each with its own valid existence. This clone is substantially in agreement with the reference, but a complete review of all prevailing variants is recommended prior to use. [More info](#)

OTI Annotation: This clone was engineered to express the complete ORF with an expression tag. Expression varies depending on the nature of the gene.

Components: The ORF clone is ion-exchange column purified and shipped in a 2D barcoded Matrix tube containing 10ug of transfection-ready, dried plasmid DNA (reconstitute with 100 ul of water).

Reconstitution Method:

1. Centrifuge at 5,000xg for 5min.
2. Carefully open the tube and add 100ul of sterile water to dissolve the DNA.
3. Close the tube and incubate for 10 minutes at room temperature.
4. Briefly vortex the tube and then do a quick spin (less than 5000xg) to concentrate the liquid at the bottom.
5. Store the suspended plasmid at -20°C. The DNA is stable for at least one year from date of shipping when stored at -20°C.

RefSeq: [NM_172310.2](#), [NP_758514.2](#)

RefSeq Size: 3194 bp

RefSeq ORF: 2373 bp

Locus ID: 272396

UniProt ID: [Q8BLY2](#)

Cytogenetics: 7 C

Gene Summary:

Catalyzes the attachment of threonine to tRNA(Thr) in a two-step reaction: threonine is first activated by ATP to form Thr-AMP and then transferred to the acceptor end of tRNA(Thr). Also edits incorrectly charged tRNA(Thr) via its editing domain, at the post-transfer stage. [UniProtKB/Swiss-Prot Function]