

Product datasheet for **MG210665**

H6pd (BC042677) Mouse Tagged ORF Clone

Product data:

| | |
|---------------------------|--|
| Product Type: | Expression Plasmids |
| Product Name: | H6pd (BC042677) Mouse Tagged ORF Clone |
| Tag: | TurboGFP |
| Symbol: | H6pd |
| Synonyms: | A1785303; G6pd1; Gpd-1; Gpd1 |
| Mammalian Cell Selection: | Neomycin |
| Vector: | pCMV6-AC-GFP (PS100010) |
| E. coli Selection: | Ampicillin (100 ug/mL) |



[View online »](#)

ORF Nucleotide
Sequence:

>MG210665 representing BC042677
Red=Cloning site Blue=ORF Green=Tags(s)

TTTTGTAATACGACTCACTATAGGGCGGCCGGAATTCGTCGACTGGATCCGGTACCGAGGAGATCTGCC
GCC**CGCATCGCC**

ATGCTCCTAGCGCAATGTGCTTGGCCCTTCTGGGCTGCCTACAGGCGCAGGAACAAGGGTCATGTTT
CCATAATCCTGCTGGGAGCAACCGGGACCTAGCTAAAAAGTACCTGTGGCAGGGACTGTTTCAGCTATA
CCTGGATGAGGCTGGGAAGGGCCACAGTTTCAGCTTCCACGGTGTGCCCTGACAGCCCCCAGCAAGGC
CAGAAGCTCATGGACAAGGCCTTGAATCCCTCTCCTGTCCCAAGGACTTGGTACCCAGTCGCTGTGATG
AACTCAAGGGTCAGTTTCTACAGCTGAGCCAATACCACCAGCTGAAGACAGTGGAGGACTATCAGACCTT
CAACAAGGATATTGAGACCCAGGTCCAGCAGGATGGGCTCTGGGAGGCAGGCAGGATCTTCTACTTCAGT
GTGCCGCCCTTTGCTACGCAGACATTGCCCGTAACATCAACAGCAGCTGCCACCACCCAGGTGCCCT
GGCTACGGGTTGTTTTGAAAAACCTTTGGCCATGACCACCTCTCAGCCAGCAGCTGGCTTCAGAAT
TGAAGCTTTTTCCAGGAGGAGGATGTACCGTGTGGATCATTACCTCGCAAGCAGGCGGTGGCTCAG
ATCCTGCCCTTCCGAGATCAGAACCGAAGGCCTTGGATGGCCTCTGGAACAGGCACCATGTGGAGCGGG
TGGAGATCATTTTGAAGGAGACCATAGATGCGGAAGGTGCGGCCAGTTTCTATGAGGAGTATGGCGTCAT
CCGTGACACGCTGCAGAACCACCTGACTGAGATCCTCACGCTGGTGGCCATGGAAGTGCCTCAACATC
AGCAGCTCAGCCACCGTCTCCAGCATAAGCTCTGGGCCCTCCAGGCCCTGCGGGGGCTGCAGAAGAGCA
GTGCCATCCTGGGCCAGTACCAGGCCTACAGCGGACAGGTGCGCCGAGAGCTGCAGAAGCCAGACGGCTT
CCAGAGCCTGACACCAACCTTCGAGGTGTCCTTGTCCACATCGACAACCTGCGTTGGGAGGGTGTCCCT
TTCATCCTGATGTCTGGCAAGGCCTTGGATGAGAGAGTGGGCTATGTTTCGATTGTGTTTAAAGATCGGG
CGTACTGCACCCAGAGCGAGAGACTGGGTGCCGGAGCAGAGCCGGTGCCTGCCCCAGGATTTATCTT
CTACATTGGACACGGTGAGCTGGGCCACCTGCCATTCTGGTCAGCCGGAACCTGTTCAAACCTCACTA
CCCCTCAGAAGTGAAGGAGGTGCAGGACCAGCCTGGGCTCCGCTGTTTCGCGCTCCTCTGTCTGATT
ACTACGCCTACAGGCCTGTGCGGGAGCAAGACGCCTACTCCACCCTCCTGTGCGACATCTTCCACTGCCG
AAAGGAGTCCTTCATCACCACCGAGAACCTCTTGGCCTCCTGGGTCTTCTGGACCCGTTACTGGACAGC
CTGGCCTTTGAAGTTCACGCCCCGTACCAGGGGGAGCCGAGAATGGCCAGCTGCTGGACTTCGAGTTTA
GCGGTGGTCAGCTGACCTTCTCCAGCAGCAGCTGGAGGTGCTGATACCAGATCTAGGCTCAGTCCCAA
GCCAGTGACTTCAGGTCTCGGGGCCCGGTATAGACAGAGCCCACTGATTACCGCTGGCCAGAGGAG
CTGATCTCTAAGCTGGCCAGTGACATTGAAGCCGCGCGGTGCAGGCGGTACGGCACTTCGCAAGTTCC
ACCTGGCACTGTCAGGTGGTTCGAGCCCCATAGCTCTCTTCCAGCAGCTGGCCACAGGGCATTACAGCTT
CCCCTGGGCCACACACACCTCTGGCTGGTTGATGAGCGCTGTGTCCCTCTCTCAGATCCAGACTCCAAC
TTCCAGGGCCTGCAGGCTCACCTGCTACAGCACGTGAGGGTACCCTACTACAACATCCACCAATGCCAG
TGCACCTGCACCAGCGGCTCTGTGCCGAGGAGGACCAGGGAGCTCAGACCTATGCCAGTGAGATCTCAGC
CCTGGTGGCAACAGCAGCTTCGACCTGGTGTCTCTGGCATGGGCACCGACGGGCACACGGCTTCTCTG
TTCCACAGTCCCCACAGGCCTGGATGGTGATCAGCTGGTGGTGTGACGGAGAGCCGTTTCAGGCCAC
ACCAACGCATGAGCCTCAGCCTGCCCTCATCAACCGAGCCAAGAAGGTAGCTGTCTGGTCATGGGCAG
GACAAAACGTGAGATCACAACGTTGGTGAGCCGCGTGGCCATGAACCAAGAAGTGGCCCATCTCAGGT
GTGGTGCCTCTTCTGGGCAGCTGGTTTGGTACATGGATTACGAGGCCTTTCTGGGA

ACGCGTACGCGGCCGCTCGAG - GFP Tag - GTTTAA

Protein Sequence: >MG210665 representing BC042677
 Red=Cloning site Green=Tags(s)

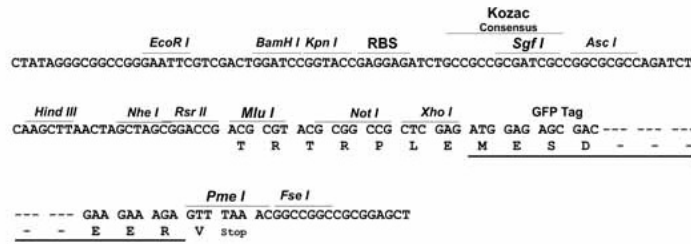
MLLAAMCLALLGCLQAQELKGHVSIIILLGATGDLAKKYLWQGLFQLYLDEAGKGHSFSFHGAALTAPQQG
 QKLMKALEESLSCPDKLVPSRCDLKGQFLQLSQYHQLKTVEDYQTLNKDIETQVQDGLWEAGRIFYFS
 VPPFAYADIARNINSSCRPHPGAWLRVVFEEKPFQHDHLSAQQLASELGSFFQEEEMYRVDHYLGKQAVAQ
 ILPFRDQNRKALDGLWNRHHVERVEIILKETIDAEGRASFYEEYGVIRDTLQNHLEITLTLVAMELPLNI
 SSSATVLRHKLWAFQALRGLQKSSAILGQYQAYSQVRRRELQKPDGFQSLTPTFAGVLVHIDNLRWEGVP
 FILMSGKALDERVGVYRIVFKNRAYCTQSERHWVPEQSRLCPQIIFYIGHGELGHPAILVSRNLFKPSL
 PTQKWKEVQDQPLRFLGRPLSDYYAYRPVREQDAYSTLLSHIFHCRKESFITENLLASWVFWTPLLDS
 LAFEVPRPYPPGAENGQLLDFEFSGGQLTFSSQQLLEVLIPDLGSVPKPSDFQVLGARYRQSPITAWPEE
 LISKLASDIEAAAVQAVRHFGKFFHLALSGGSSPIALFQQLATGHYSFPWAHTHLWLVDERCVPLSDPDSN
 FQGLQAHLLQHVRVPYYNIHMPVHLHQRLCAEEDQGAQTYASEISALVANSSFDLVLLMGMTDGHASL
 FPQSPTGLDGDQLVVLTESPFRPHQRMSSLPLINRAKKVAVLVMGRTKREITTLVSRVGHPEPKWPIGS
 VVPLSGQLVWYMDYEAFLG

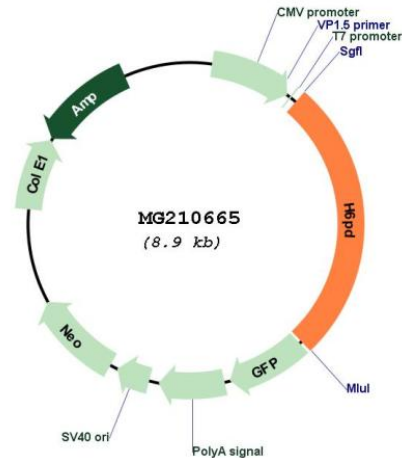
TRTRPLE - GFP Tag - V

Restriction Sites: SgfI-MluI

Cloning Scheme:

Cloning sites used for ORF Shuttling:



Plasmid Map:


ACCN: BC042677

ORF Size: 2369 bp

OTI Disclaimer: The molecular sequence of this clone aligns with the gene accession number as a point of reference only. However, individual transcript sequences of the same gene can differ through naturally occurring variations (e.g. polymorphisms), each with its own valid existence. This clone is substantially in agreement with the reference, but a complete review of all prevailing variants is recommended prior to use. [More info](#)

OTI Annotation: This clone was engineered to express the complete ORF with an expression tag. Expression varies depending on the nature of the gene.

Components: The ORF clone is ion-exchange column purified and shipped in a 2D barcoded Matrix tube containing 10ug of transfection-ready, dried plasmid DNA (reconstitute with 100 ul of water).

Reconstitution Method:

1. Centrifuge at 5,000xg for 5min.
2. Carefully open the tube and add 100ul of sterile water to dissolve the DNA.
3. Close the tube and incubate for 10 minutes at room temperature.
4. Briefly vortex the tube and then do a quick spin (less than 5000xg) to concentrate the liquid at the bottom.
5. Store the suspended plasmid at -20°C. The DNA is stable for at least one year from date of shipping when stored at -20°C.

RefSeq: [BC042677](#), [AAH42677](#)

RefSeq Size: 4583 bp

RefSeq ORF: 2369 bp

Locus ID: 100198

Cytogenetics: 4 80.65 cM

Gene Summary:

Oxidizes glucose-6-phosphate and glucose, as well as other hexose-6-phosphates.
[UniProtKB/Swiss-Prot Function]