

Product datasheet for **MG210664**

Tshz1 (BC058264) Mouse Tagged ORF Clone

Product data:

Product Type:	Expression Plasmids
Product Name:	Tshz1 (BC058264) Mouse Tagged ORF Clone
Tag:	TurboGFP
Symbol:	Tshz1
Synonyms:	NY-CO-33, Mtsh1, mKIAA4206, Tsh1, teashirt1
Mammalian Cell Selection:	Neomycin
Vector:	pCMV6-AC-GFP (PS100010)
E. coli Selection:	Ampicillin (100 ug/mL)



[View online »](#)

ORF Nucleotide
Sequence:

>MG210664 representing BC058264
Red=Cloning site Blue=ORF Green=Tags(s)

TTTTGTAATACGACTCACTATAGGGCGGCCGGAATTCGTCGACTGGATCCGGTACCGAGGAGATCTGCC
GCCCGCATCGCC

ATGGAGGGGAAGGAGGACGCCAGAAGGTGCTGAAGTGTATGTACTGCGGACACTCCTTCGAGTCTTTGC
AAGACCTCAGTGTCCACATGATCAAACAAGCATTACCAGAAAGTGCCTCTGAAGGAGCCCGTGCCAGC
CATCACAAACTGGTCCCTTCCACCAAGAAGCGAGCACTCCAGGACCTGGCATCCCTTGTTCGCCAGAG
CCCACGGGCGTGCCACTGAGGTTGCACTGAGTGAGTCAAGGACCAGAAAACGGCCAAACCCGTACG
TGACTCCGAACAACCGTTACGGCTACCAGAATGGTGTAGTTACACGTGGCAGTTCGAGGCCCGCAAAGC
CCAGATACTCAAGTGCATGGAATGTGGCAGCTCCCATGATACCTTGACGAGCTCACAGCCACATGATG
GTCAGTGGCCATTTCTAAAGGTGACAACCTCTGCCTCCAAGAAAGGAAAGCAGCTGGTGTGGACCCCG
TGGTGGAGGAGAAGATCCAGTCCATCCCGTTGCCCGGACCACTCACACCCGGCTGCCTGCCTCTAGCAT
CAAGAAGCAACCGGACTCTCCTGCGGGCTCTGTAGCCTCAGAAGAGAAGAAGAACTGAGAAGGAGAAG
GAAAAGGAGAAAAGCCCAACCGGACAGCTGGGGATGCAGAGAGAAAATCAAAGAGGAGACTGAAGTGCCA
CTGAGAAGTTGAGCCCACTGCCCTTTATCAGTACCTGCGTGAGGAAGACCTAGATGACAGCCCAAGGG
AGGAGTAGATATCCTAAAGTCACTCGAGAACACTGTGTCCACGGCCATCAGTAAAGCCAGAAATGGGGCA
CCCTCATGGGGTGGGTACCCAGCATCCATGCAGCCTACCAGCTGCCAGGCACAGTGAAGCCACTGCAGT
CTGCTGTGCAGAGCGTCAAATACAGCCGCTTACGCCAGCAGCGTGAAGTCACTGTCTCCACAGAGCA
CAATGCCCTCTACACTCCCAAGGAGCCTCACCCCGCCACCCATAAGAGCAATGTGTCTGCCATGGAG
GAGTTAGTAGAGAAGGTACGGGCAAGGTGAGCATCAAGAAGGAGGAGAGGCCTACTGAGAAGGAGAAGA
GCTCCCTGTCAAAGCCATCTCTCTGTGGCAAAGGAGAATAAAGATCTTCTTAAGACAGAGGAGCCGG
GAGCAAGCCACAGAAGAAGGGCTCGGATTACAGAACTGGGAAGGCCAAAAGGAGAGTACATTGGACGCT
CACACCCCAAATGGTACAGAACCTCTTAAAGCCAAAGTACCAATGGCTGCGGCCATCTGGGTATCATCA
CGGACCACTCGCCGGAGCCTTCTTTCATCAACCCTCTAAGCGCTCTGCAGTCCATCATGAACACCCACCT
AGGAAAGGTGTCAAGCCGTGAGCCCTCTCTGGATCCACTGGCGATGCTCTACAAGATCAGCAACAGC
ATGCTGGACAAGCCGCTACCCACGACCCCTGCCAAGCAGGCTGATGCAATCGACCGCTACTACTATG
AGAACAGCGACCAGCCATTGATCTGACCAAGTCTAAGAACAAGCCACTGGTCTCGGGTGTGGCAGATGC
TGTGTCTCGCTCTGCGGGAGAGCGCCCTCATGGATATCTCGGACATGGTGAATAATCTCACAGGTCGT
CTGACTCCAAGTCTCCACACCTCCACGGTGTGAGAGAAGTCAAGTGCAGATGGGAGCAGCTTTGAGG
AGGCCCTGGACGAGCTGTACCTGTTACAAGAGAAAGGGGCGCCAGTCCAATTGGAACCCACAACACCT
GCTCATCTGCAGGCTCAGTTTGCCTCCAGCCTTCGAGAGACAGCAGAAGGGAAATACATCATGTGACAGC
CTGGGCCCTCAGGAGCGGGTGCACATCTCCAAGTTCACGGGCTATCCATGACCACCATCAGTCACTGGC
TGGCCAACGTGAAGTACCAGCTGCGGAGGACAGGGGGAACCAAGTTCTTAAGAACCTCGACACAGGGCA
TCCTGTTTTCTTTGTAATGATTGTGCCTCTCAGTTCAGAACTGCCTCCACGTACGTCACTCACCTGGAG
ACGCACCTAGGCTTCAGCTTGAAGGACCTCTCAAAGCTGCCACTCAGTCAAGTACAAGAGCAGCAGAGTG
TCGTCTCAAAGCCCTCACCAACAAGACTCTGGGCCGCTGGGCTCTCCGAGGAAGACCTGGGCTCCAC
ATTCAAATGCAAGCTCTGCAACCGGACTTTTGCAGCAAGCAGCAGTAAAAGTGCACCTTAGTAAGAGC
CACGGCAAGTCGCCAGAGGACCCTGATCTACGTGACAGAGCTGGAGAAGCAA

ACGCGTACGCGGCCGCTCGAG – GFP Tag – GTTTAA

Protein Sequence: >MG210664 representing BC058264
 Red=Cloning site Green=Tags(s)

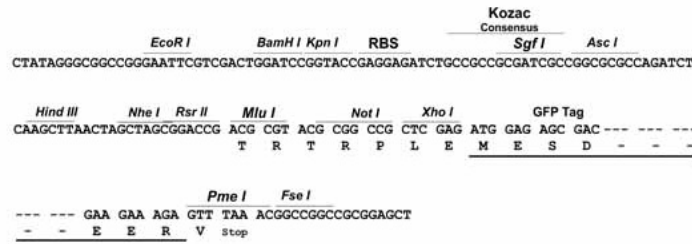
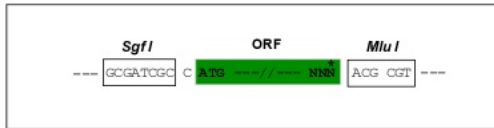
MEGKEDAQKVLKCMYCGHSFESLQDL SVHMIKTKHYQKVPLKEPVPAITKLV PSTKKRALQDLASPCSPE
 PTGVATEVALSESAKDQKTANPYVTPNNRYGYQNGASYTWQFEARKAQILKCMCEGSSHDTLQQLTAHMM
 VTGHFLKVTTASAKKQQLVLDPVVEEKIQSIPLPPTTHTRLPASSIKKQPDSPAGSVASEEKKEPEKEK
 EKEKAPPAAGDAERKIKEETEDATEKFEPALYQYLREEDLDDSPKGGVDILKSLENTVSTAI SKAQNGA
 PSWGGYPSIHAAYQLPGTVKPLQSAVQSVQIQPSYASSVKLSSTEHNALLHSPGSLTPPPHKS NVSAME
 ELVEKVTGKVSIIKKEERPEKEKSSPVKAI SPVAKENKDLPKTEETGSKPQKKGSDSETGKAKKESTLDA
 HTPNGTEPLKAKVTNGCGLGII TDHSPSPFINPLSALQSIMNTHLGKVS KPVSPSLDPLAMLYKISNS
 MLDKPVYPTTAPAKQADAIDRYYYENS DQPIDLTKSKNKPLVSGVADAVSSPLRESALMDISDMVKNLTGR
 LTPKSSTPSTVSEKSDADGSSFEALDELSPVHKRKRQSNWNPQHLL ILQAQFASSLRETAEGKYIMSD
 LGPQERVHISKFTGLSMTTISHWLANVKYQLRRTGGTKFLKNLDTGHPVFFCNDCASQFRTASTYVSHLE
 THLGFSLKDL SKLPLSQIQEQSVVSKALTNKTLGPLGSSEEDLGSTFQCKLCNRTFASKHAVKHLHLSKT
 HGKSPEDHLIYVTELEKQ

TRTRPLE - GFP Tag - V

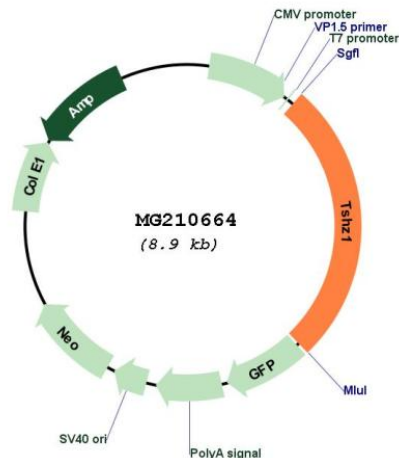
Restriction Sites: SgfI-MluI

Cloning Scheme:

Cloning sites used for ORF Shuttling:



Plasmid Map:



ACCN: BC058264

ORF Size: 2364 bp

OTI Disclaimer: The molecular sequence of this clone aligns with the gene accession number as a point of reference only. However, individual transcript sequences of the same gene can differ through naturally occurring variations (e.g. polymorphisms), each with its own valid existence. This clone is substantially in agreement with the reference, but a complete review of all prevailing variants is recommended prior to use. [More info](#)

OTI Annotation: This clone was engineered to express the complete ORF with an expression tag. Expression varies depending on the nature of the gene.

Components: The ORF clone is ion-exchange column purified and shipped in a 2D barcoded Matrix tube containing 10ug of transfection-ready, dried plasmid DNA (reconstitute with 100 ul of water).

Reconstitution Method:

1. Centrifuge at 5,000xg for 5min.
2. Carefully open the tube and add 100ul of sterile water to dissolve the DNA.
3. Close the tube and incubate for 10 minutes at room temperature.
4. Briefly vortex the tube and then do a quick spin (less than 5000xg) to concentrate the liquid at the bottom.
5. Store the suspended plasmid at -20°C. The DNA is stable for at least one year from date of shipping when stored at -20°C.

RefSeq: [BC058264.1](#)

RefSeq Size: 2900 bp

RefSeq ORF: 2366 bp

Locus ID: 110796

Cytogenetics: 18 57.53 cM

Gene Summary: Probable transcriptional regulator involved in developmental processes. May act as a transcriptional repressor (Potential).[UniProtKB/Swiss-Prot Function]