

Product datasheet for **MG210658**

Pdxdc1 (NM_053181) Mouse Tagged ORF Clone

Product data:

Product Type:	Expression Plasmids
Product Name:	Pdxdc1 (NM_053181) Mouse Tagged ORF Clone
Tag:	TurboGFP
Symbol:	Pdxdc1
Synonyms:	2210010A19Rik; AA415817; Kiaa0251-hp
Mammalian Cell Selection:	Neomycin
Vector:	pCMV6-AC-GFP (PS100010)
E. coli Selection:	Ampicillin (100 ug/mL)



[View online »](#)

ORF Nucleotide Sequence:

>MG210658 representing NM_053181
 Red=Cloning site Blue=ORF Green=Tags(s)

TTTTGTAATACGACTCACTATAGGGCGGCCGGGAATTCGTCGACTGGATCCGGTACCGAGGAGATCTGCC
 GCC**CGGATCGCC**

ATGGACGCGTCCCTGGAGAAGATAGCAGACCCTACATTAGCTGAAATGGGAAAAAATTGAAAGAGGCGA
 TCGCGATGCTGGAGAAGAGCCCGAGAAGAACAGAGGAGGAAAATGGAAAGAAGCCAGTATCGGAGGATAT
 TCCAGGGCCACTCCAAGGCAGTGGACAAGATATGGTGAGCATCCTCCAGTTAGTTCAAAACTGATGCAT
 GGAGATGAAGACGAGGAGCCCGAGAGCACCAGAAATCCAAAACATTGGAGAGCAAGGTCACATGGCTTTGT
 TGGGTCATAGCCTCGGTGCCTATATTTCAACTCTGGATAAAGAGAAGCTGAGAAAGCTCACAAACCAGGAT
 ACTTTCCAGACACTACCTTATGGCTACGCCGATTTTCAGGTACGAAAATGGATGTGCATATTTCCACGAG
 GAAGAGAGGGAAGGACTTGCTAAGATCTGTAGGCTTGCCATTCTTCGCTATGAAGACTTTGTTGTAG
 ATGGATTCAACGTGTTATATAACAAAAAGCCTGCATATATCTTAGTGCTGCCGTAGACCTGGCCTGGG
 CCAATACCTTTGTAATCAGCTTGGCTTACCCTTCCCCTGCCTGTGCCGTGTGCCCTGTAACACTATGTTT
 GGATCCCAGCATCAGATGGACGTTGCCTTTCTCGAGAAACTGATCAAAGATGACATAGAAAGAGGGAAGAC
 TGCCCTTGCTGCTTGTGCAAAATGCTGGAAGTGCAGCAGTTGGACACACAGACAAGATTGGACGTTTGAA
 GAACTCTGTGAGCAGTACGGCATTGGCTTTCATGTGGAAGGTGTGAATCTGGCAACATTGGCTCTAGGT
 TATGTCTCCTCATCTGTGCTGGCTGCAACCAAGTGCATAGCATGACACTAACTCCTGGCCTATGGCTAG
 GTTTGCCAGCTGTTCTCGAGTGACACTCTACAAACATGACGATCCTGCCTTGACACTAGTTGCTGGTCT
 TACATCAAATAAGCCTGCAGACAACTCCGAGCCCTACCACTCTGGTTGTCTCTACAGTACTTGGGACTT
 GATGGCATTGTGGAGAAAATAAAGCATGCTTGTATCTGAGTCAACGGTTGCAAGAAAGTTGAAGAAAG
 TGGACCACATCAAATCTTGGTGAAGATGAGCTCAGTTCTCCAGTAGTGGTGTTCAGTTTTTCCAGGA
 ATTACCAGCCTCAGATTCAGCGTTTAAAGCTGTTCCCTGTATCCAACATAGCACCTGCAGCAGTTGGCCGG
 GAAAGACACTCCTGTGATGCACTGAACCCTGGTTGGGTGAACAGTTGAAACAGTTGGTGCCTCAGTGTG
 GCCTCACTGTCATAGACCTGGAGGTAGATGGCACATGTGTTTCGGTTCAGCCCTCTGATGACAGCAGAAGG
 GTTAGGAACTCGAGGAGAGGATGTCGATCAGCTCATTACCTGCATCCAAAGCAAACCTACCAGTCTGACC
 TGCACACTACAGCTGCGGGAAGAATTCAAGCAGGAGGTAGAGGGGACAGCAGGGCTCCTGTATGTTGATG
 ACCCCAACCTGGCCTGGAATCGGGGTTGTCAGGTATGAGCATGCGAATGATGATGACACCAGTTTGAATC
 TGATCCAGAGGGGAAAAAATACACACTGGACTTCTGAAAAAGTTAAATGAACTGGAATCTGACCTCACA
 TTTAAAAATAGGCCCTGAGTACAAAAGCATGAAGAGCTGCATTTACATTGGCATGGCAAGTATGATGTGG
 ACGTTTCTGAGCTAGTGGAGACCATTGCAGTACAGCCCGGGAATTGAGGAGAAGTCAAGGCTTCTAGA
 GAACATGACAGAAGTTGTTTCGGAAGGGAATTCAAGGAGGCACAGGTTACAGTACAGAAAGGCAATGAGGAG
 CGGCTTCTGGAAGAGGGAGTGTGCGGCAAAATCCCTGTAGTAGGATCCGTGCTGAATTTGGTTTTCTCCAG
 TCCAGGCTTACAGAAGGGAAGAAGTTTAACTTAACAGCAGGCTCTCTGGAGTCCACAGAATACACCTA
 TGTCCACAAAGTACAAGTACTGGGGTACACCACCTCCCACACCCTAGGCACTCGAAGCAAACAGAGG
 CTTCCAGGTCAGAAGCCTTTTAAAGGTCCCTGAGAGGCTCGGATGCTGTGAGTGAAGCAGCTCAGTCA
 GCCACATTGAAGACCTGGAAGGTTGGAACAGCTGTCCAGTGGGCTAGAGCATGACAACCTAGAGGCCCA
 CAGCCCTGAGCAGCCTCCAGGGCTGCTGATCTCACGGCCAGACAGACTGAGGCCCTGCAGAACCAGGCC
 CAGCATCAGGAAGATGACCATTACAGGTAGAGGAACTGGAGCGCTTAAGA

AGCGGACCGACGCGTACGCGGCCGCTCGAG - GFP Tag - GTTTAA

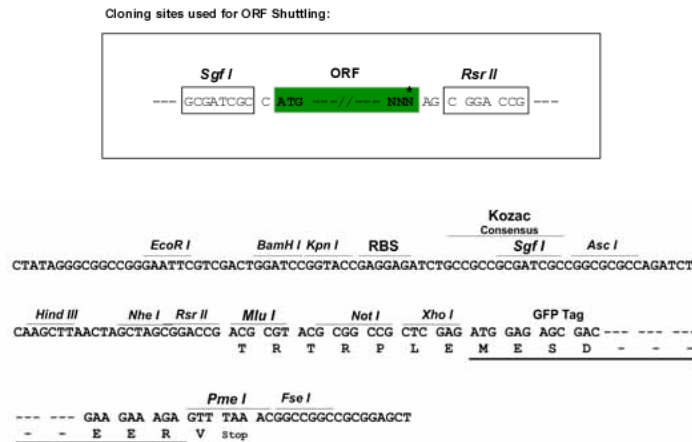
Protein Sequence: >MG210658 representing NM_053181
 Red=Cloning site Green=Tags(s)

MDASLEKIADPTLAEMGKNLKEAMRMLEKSPRRTTEEENGKPPVSEDIPGPLQSGSQDMVSILQLVQNLMMH
 GDEDEEPQSTRIQNIQEQQHMALLGHSLGAYISTLDKEKLRKLTTRILSDTTLWLRRIFRYENGCCAYFHE
 EEREGLAKICRLAIHSRYEDFVVDGFNVLNKKPVIYLSAAARPLGQYLCNQLGLPFPCLCRVPCNTMF
 GSQHQMDVAFLEKLIKDDIERGRPLLLVANAGTAAVGHGTDKIGRLKELCEQYGIWLHVEGVNLTALG
 YVSSSVLAATKCDMSMLTPGLWGLPAVPVAVTLYKHDDPALTLVAGLTSNKPADKLRALPLWLSLQYLGL
 DGIVEKIKHACHLSQRLQESLKKVDHIKILVEDELSSPVVFRFFQELPASDSAFKAVPVSNIAPAVGR
 ERHSCDALNRWLGELKQLVPQCGLTVIDLEVDGTCVRFSPMTAEGLTRGEDVDQLITCIQSKLPVLT
 CTLQLREEFKQEVEGTAGLLYVDDPNWPGIGVVRYEHANDDTSLKSDPEGEKIHTGLLKKLNELES
 DLTFKIGPEYKSMKSCIYIGMASDDVDVSELVETIAVTAREIEENSRLLENMTEVVRKGIQEAQVQLQKANE
 ERLLEEVLRQIPVVGSVLNWVSPVQASQKGRSFNLTAGSLESTEYTVHKVQGTGVTPTPLGTRSKQR
 LPGQKPFKRSLRGSDAVSETSSVSHIEDLEKVEQLSSGLEHDNLEAHSPEQPRAADLTARQTEALQNA
 QHQEDDHSQVEELERLR

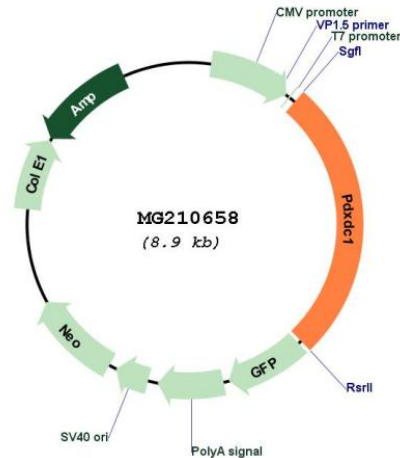
SGPTRRRLE - GFP Tag - V

Restriction Sites: SgfI-RsrII

Cloning Scheme:



Plasmid Map:



ACCN: NM_053181

ORF Size: 2361 bp

OTI Disclaimer: The molecular sequence of this clone aligns with the gene accession number as a point of reference only. However, individual transcript sequences of the same gene can differ through naturally occurring variations (e.g. polymorphisms), each with its own valid existence. This clone is substantially in agreement with the reference, but a complete review of all prevailing variants is recommended prior to use. [More info](#)

OTI Annotation: This clone was engineered to express the complete ORF with an expression tag. Expression varies depending on the nature of the gene.

Components: The ORF clone is ion-exchange column purified and shipped in a 2D barcoded Matrix tube containing 10ug of transfection-ready, dried plasmid DNA (reconstitute with 100 ul of water).

Reconstitution Method:

1. Centrifuge at 5,000xg for 5min.
2. Carefully open the tube and add 100ul of sterile water to dissolve the DNA.
3. Close the tube and incubate for 10 minutes at room temperature.
4. Briefly vortex the tube and then do a quick spin (less than 5000xg) to concentrate the liquid at the bottom.
5. Store the suspended plasmid at -20°C. The DNA is stable for at least one year from date of shipping when stored at -20°C.

RefSeq: [NM_053181.1](#)

RefSeq Size: 3223 bp

RefSeq ORF: 2364 bp

Locus ID: 94184

UniProt ID: [Q99K01](#)

Cytogenetics: 16 A1