

Product datasheet for **MG210655**

Wwp1 (BC026829) Mouse Tagged ORF Clone

Product data:

Product Type:	Expression Plasmids
Product Name:	Wwp1 (BC026829) Mouse Tagged ORF Clone
Tag:	TurboGFP
Symbol:	Wwp1
Synonyms:	AIP5, SDRP1, Tiul1
Mammalian Cell Selection:	Neomycin
Vector:	pCMV6-AC-GFP (PS100010)
E. coli Selection:	Ampicillin (100 ug/mL)



[View online »](#)

**ORF Nucleotide
Sequence:**

>MG210655 representing BC026829
 Red=Cloning site Blue=ORF Green=Tags(s)

TTTTGTAATACGACTCACTATAGGGCGGCCGGGAATTCGTCGACTGGATCCGGTACCGAGGAGATCTGCC
 GCC**CGCATCGCC**

ATGGGACGAGCAGCTGATTGTAATGTGACCCACAGACCACCTTGGAGTCCGAGTTTGGAGTCACCAC
 ACTTTAAAGGCAGATGCTCTATTAGGAAAAGCAACAGTGGACTTGAAACAAGTGCTGTTAACACACAACA
 GAAAATGTTGCCTGTTGAAGTACTATTGGAATTGATAATCATGTATCAACCAATACTGTTGTTCCCAAC
 TCCTGCTGTTACATGTAGTTAATGGAGAAAACACACCTTCATCCCCGTCTCAGGTTGCTGCCAGACCCA
 AAAATGCTCCAGCTCAAAGCCAGTCACATCTGCGCCACCAGTGACACGGTTAATGGAGAATCATCATC
 TGTCTAGCTGATAACTTCAACCATGGGTACTTTACTACCATCTGAAGATACCACCTCGACTTCCAAT
 TGCCTAGCACCACCACCAAGAGCCTCTGTACAAGAACCCCGAGCATCCTCAGAACACAGTGAATGTA
 TTCCCTCTGCCAGTGCAGGAGTGGGACCAGAAGCTCGGAGCCTCATAGACCCTGACTCTGATTCTAGAAA
 TAATTCTGTGTTGACAAAGTAAGGCAGCCAGAAGGGTGTGTAGAACCTCTGCGGCCACAGTCTGGAAAC
 ACCAACACAGAAGCTTTGCCATCAGGGTGGGAACAGAGAAAAGATCCTCATGGTAGAACCTATTATGTGG
 ATCATAATACTCGAACTACTACATGGGAGAGACCACAGCCTTGCCTCCAGGTTGGGAAAGAAGAGTTGA
 TGATCGTGGAAAGAGTTTATTATGTGGATCATAACACCAGAAACAACACCTGGCAGCGGCCTACTATGGAA
 TCTGTTGAAAATTTGAACAGTGGCAGTCTCAGCGGAATCAATTGCAGGGAGCTATGCAACAATCAACC
 AACGATACCTCTATTGCGCTTCCATGTTAGCTGCAGAAAATGACCCCTATGGACCCTTACCACGGGCTG
 GGAAAAAGAGTGGATCAACAGACAGAGTTTACTTTGTGAATCAACAACAAAAACAACCCAGTGGGAA
 GATCCAAGAACTCAAGGCTTACCAATGAAGAACCCTGCCCGAAGGCTGGGAAATCAGGTATACTCGGG
 AAGGTGTTAGTACTTTGTTGATCATAACACGAGAACAACAACATTCAAAGACCCTCGCAATGGGAAGT
 ATCAGTAACTAAAGGTGGTCCACAGATTGCTTATGAACGCAGCTTTAGGTGGAAGCTTGCTCACTTCCGT
 TACTTGTGCCAGTCTAATGCACTACCGAGTCAATGTAAGATCAATGTGTCCCGACAGACATTATTTGAAG
 ATTCCTTCCAACAGATTATGGCATTAAAACCATATGACTTGAGGAGGCGATTATATGTAATATTTAGAGG
 AGAAGAAGGTCTTGATTATGGTGGCCTTGCAAGAGAATGGTTTTTCTTGCTTTCCCATGAAGTTTGAAC
 CCAATGTATTGCTTATTTGAGTATGCAGGCAAGAATAACTATTGTTTACAGATAAATCCAGCATCAACTA
 TAAATCCTGACCATCTTTCATACTTCTGTTTTATTGGTCGCTTTATTGCAATGGCACTGTCCATGGAAA
 GTTTTATTGATACTGGTTTCTTTACCATTCTACAAGCGTATGCTAAGTAAAAAATTTACTATTAAGGAT
 TTGGAATCTATTGATACTGAATTTTACAACCTCTAATCTGGATAAGAGATAACAATATTGAAGAATGTG
 GCTTAGAAATGACTTTTCTGTAGACATGGAGATTCTGGGAAAAGTTACTTCACATGATTTAAAGTTGGG
 AGGTTCCAATATCCTGGTGACGGAAGAAAACAAGATGAATATATTGGTTAATGACAGAATGGCGTTTT
 TCTCGAGGAGTACAAGAACAGACCAAAGCTTCCCTTGATGGGTTAATGAAGTTGTTCCCTTCACTGGC
 TACAGTACTTTGATGAAAAAGAATTGGAGGTTATGCTGTGTGGCATGCAAGAGGTTGACTTGGCAGACTG
 GCAGAGAAATACTGTTTATCGACATTATAACAAGAAACAGCAAGCAAAATTTGGTTTTGGCAGTTTGTG
 AAAGAGACTGATAATGAAGTACGAATGCGACTCTTGCAGTTTGTGACTGGAACCTGTGCTTGCCTCTAG
 GAGGATTTGCTGAGCTCATGGGAAGTAAATGGCCCTCAAAGTTCTGTATTGAAAAAGTTGGCAAAGACAC
 CTGGTTACCAAGAAGCCATACATGTTTTAATCGCTTGGATCTACCACCATATAAGAGTTATGAACAACATA
 AAGGAAAAACTTCTTTTTGCAATAGAAGAGACAGAGGGATTTGGACAAGAA

ACGCGTACGCGGCCGCTCGAG - GFP Tag - GTTTAA

Protein Sequence: >MG210655 representing BC026829
 Red=Cloning site Green=Tags(s)

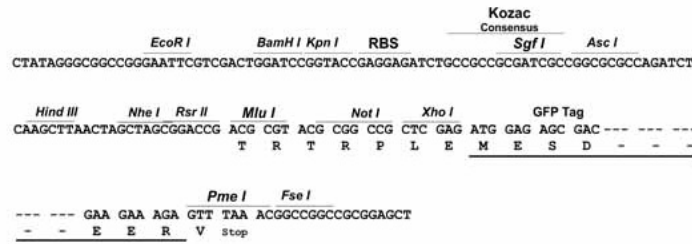
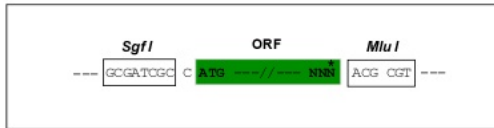
MGRAADCKCDPTDHLGVPSPLESPHFKGRCSIRKSNSGLETSVAVNTQQKMLPVEGTIGIDNHVSTNTVVPN
 SCCSHVNGENTPSSPSQVAARPKNAPAPKPVTSAPTSDTVNGESSVLADNTSTMGTLLPSEDTTSTSN
 CTSTTTQEPVQEPPESEHSECIPASAEVGPPEARSLIDPDSRSRNNVFDKVRQPEGCVEPLRPQSGN
 TNTEALPSGWEQRKDPHGRTYYVDHNTRTTTWERPQPLPPGWERRVDDRGRVYYVDHNTRTTTQWRPTME
 SVRNFEQWQSQRNQLQGAMQQFNQRYLYSASMLAAENDPYGGLPPGWEKRV DSTDRVYFVNHNKTTQWE
 DPRTQGLPNEEPLPEGWEI RYTRREGVRYFVDHNTRTTTFKDPKNGKSSVTKGGPQIAYERSFRWKL AHFR
 YLCQSNALPSHVKINVSQTLFEDSFQIMALKPYDLRRLRYVIFRGEGLDYGLAREWFFLLSHEVLN
 PMYCLFEYAGKNNYCLQINPASTINPDHLSYFCF IGRFIAMALFHGKFIDTGFSLPFYKRLSKKLT IKD
 LESIDTEFYNSLIWIRDNIIEEGLEMYFSVDMEILGKVTSHDLKLGGSNILVTEENKDEYIGLMTWRF
 SRGVEQTKAFLDGFNEVVLQWLQYFDEKELEVMLCGMQEVDLADWQRNTVYRHYTRNSKQIIWFQFV
 KETDNEVRMRLQLQFVTGTCRLPLGGFAELMGSNGPQKFCIEKVGKDTWLP RSHTCFNRLDLPYKSYEQL
 KEKLLFAIEETEGFGQE

TRTRPLE - GFP Tag - V

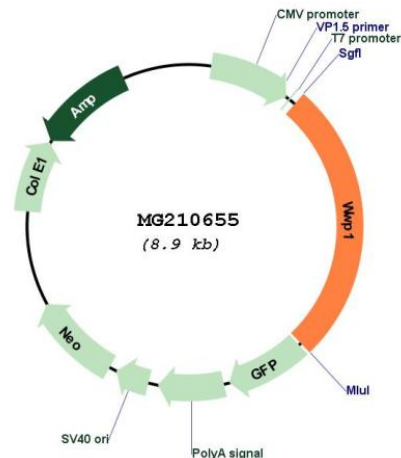
Restriction Sites: SgfI-MluI

Cloning Scheme:

Cloning sites used for ORF Shuttling:



Plasmid Map:



ACCN: BC026829

ORF Size: 2361 bp

OTI Disclaimer: The molecular sequence of this clone aligns with the gene accession number as a point of reference only. However, individual transcript sequences of the same gene can differ through naturally occurring variations (e.g. polymorphisms), each with its own valid existence. This clone is substantially in agreement with the reference, but a complete review of all prevailing variants is recommended prior to use. [More info](#)

OTI Annotation: This clone was engineered to express the complete ORF with an expression tag. Expression varies depending on the nature of the gene.

Components: The ORF clone is ion-exchange column purified and shipped in a 2D barcoded Matrix tube containing 10ug of transfection-ready, dried plasmid DNA (reconstitute with 100 ul of water).

Reconstitution Method:

1. Centrifuge at 5,000xg for 5min.
2. Carefully open the tube and add 100ul of sterile water to dissolve the DNA.
3. Close the tube and incubate for 10 minutes at room temperature.
4. Briefly vortex the tube and then do a quick spin (less than 5000xg) to concentrate the liquid at the bottom.
5. Store the suspended plasmid at -20°C. The DNA is stable for at least one year from date of shipping when stored at -20°C.

RefSeq: [BC026829.1](#)

RefSeq Size: 3107 bp

RefSeq ORF: 2363 bp

Locus ID: 107568

Cytogenetics: 4 A3

Gene Summary:

E3 ubiquitin-protein ligase which accepts ubiquitin from an E2 ubiquitin-conjugating enzyme in the form of a thioester and then directly transfers the ubiquitin to targeted substrates. Ubiquitinates and promotes degradation of SMAD2 in response to TGF-beta signaling, which requires interaction with TGIF (By similarity). Ubiquitinates ERBB4 isoforms JM-A CYT-1 and JM-B CYT-1, KLF2, KLF5 and TP63 and promotes their proteasomal degradation. Ubiquitinates RNF11 without targeting it for degradation. Ubiquitinates and promotes degradation of TGFBR1; the ubiquitination is enhanced by SMAD7. Ubiquitinates SMAD6 and SMAD7. [UniProtKB/Swiss-Prot Function]