

## Product datasheet for **MG210654**

### **Itgb6 (NM\_021359) Mouse Tagged ORF Clone**

#### **Product data:**

Product Type:	Expression Plasmids
Product Name:	Itgb6 (NM_021359) Mouse Tagged ORF Clone
Tag:	TurboGFP
Symbol:	Itgb6
Synonyms:	2210409C20Rik; 4831415H04Rik
Mammalian Cell Selection:	Neomycin
Vector:	pCMV6-AC-GFP (PS100010)
E. coli Selection:	Ampicillin (100 ug/mL)



[View online »](#)

**ORF Nucleotide Sequence:**

>MG210654 representing NM\_021359  
 Red=Cloning site Blue=ORF Green=Tags(s)

TTTTGTAATACGACTCACTATAGGGCGGCCGGAATTCGTGACTGGATCCGGTACCGAGGAGATCTGCC  
 GCC**CGGATCGCC**

ATGGGGATTGAGCTGGTCTGCCTGTTTCTGCTACTTCTAGGAAGGAATGATCACGTCCAAGTGCGCTGTG  
 CCTGGGGTGGTGCAGAAAGCTGCTCAGACTGCCTGCTCACAGGACCCACTGCGCCTGGTCTCCAGGA  
 GAATTTACCCACCTGTCTGGAGCTGGCGAGAGGTGCGACACCCAGCGAATCTTTTAGCCAAAGGATGT  
 CAACTACCCTTCAATTGAAAACCTGTCTCCCGCATAGAAGTCCTTCAAAATAAGCCTCTCAGCGTGGGCC  
 GACAGAAGAACAGTTCTGACATTGTTTCTGATTGCTCCTCAAAGCTTGGTTCTTAAATTGAGACCAGGGCG  
 TGAGCAGACTCTGCAAGTGCAGGTCCGCCAAACTGAAGATTACCCAGTAGATCTGTATTACCTCATGGAC  
 CTCTCCGCTCTATGGATGACGACCTCAACACCATCAAAGAGCTTGGCTCCCGGCTGGCCAAAGAGATGT  
 CCAAACCTAACAGCAACTTTAGACTGGGCTTTGGCTCTTTTGTGAAAAGCCGTTTCTCCTTTTATGAA  
 AACACCCAGAGGAAATCACCAACCTTGCAGTAGTATCCCCTATTTCTGCTTACCTACATTTGGATTC  
 AAGCACATTTTGGCATTAACTGATGATGCCGAGAGATTCAATGAAATTGTGAGGAAACAGAAAGATTTCTG  
 CTAATATTGACACACCTGAAGGTGGATTTGATGCAATCATGCAGGCTGCTGTGTGTAAGGAAAAGATTGG  
 CTGGCGCAATGACTCGCTCCACCTCCTGGTTTTTGTGAGTGATGCCGATTCTCATTTTGGAAATGGACAGC  
 AAGCTGGCAGGCATTGTCAATCCCAATGATGGACTCTGTCACTTGGACCACAGGAATGAATATTCATGT  
 CAACTGTCTTGGAAATATCCAATATCGGCCAACTCATTGATAAAGTGGTACAAAACACCTGTACTGAT  
 CTTTGCAGTACCCAAGAACAAGTCCATCTGTATGAGAACTATGCAAACTCATTCTGGAGCAACCGTG  
 GGACTGCTTCAGAAGGATTCTGGGAACATCCTTACGTGATCATCTCCGTTATGAAGAATGCGGTCTG  
 AGGTGGAACCTGGAAGTGTAGGGGACACAGAAGGACTCAACCTGTCTTTACAGCTCTCTGTAACAATGG  
 TGTCTCTTCCACACCAAAAAGAAATGCTCCACATGAAAGTTGGAGACACAGCATCCTTCAATGTGACT  
 GTGAGCGTATCCAAGTGTGAGAAAAGAAGCAGGAACCTCATCATAAAGCCAGTGGGGCTGGGGGACACCC  
 TAGAAATACTCGTCAGTGCAGAATGTGACTGCGACTGCCAGAGAGAAATAGAAACTAACAGCTCTAAGTG  
 TCACAATGGGAATGGCTCCTTCCAGTGTGGGTGTGTACCTGCAACCCCGGCCACATGGGTCTCACTGC  
 GAGTGTGGTGAGGATATGGTGTGACAGGATTCCTGCAAGGAGTCCCGGGTACCCTTATGCAGTGGAA  
 GGGGTGACTGCTATTGTGGCAGTGCATCTGCCACTTATCGCCGTACGGAAGCATCTACGGACCTTACTG  
 CCAGTGTGACAACCTTCTCTGTCTGAGACACAAAGGCCTTCTCTGTGGAGATAACGGTGACTGTGACTGT  
 GCGGAGTGTGTGCCGGATGGCTGGACAGGTGAATACTGTAAGTGTACAACCAACAGGGACTCGTGTA  
 CATCTGAGGATGGAGTGTGTGCAAGTGGAGCTGGGGACTGTGTCTGTGGCAAGTGTGTCTGCAGAAACCC  
 TGGAGCCTCAGGACCCACCTGTGAACGCTGTCTACCTGTGGCGACCCCTGTAACCTAAACGGAGTTGC  
 ATCGAGTGTACCTGTCTGCAGATGGCCAGGCCAAGAAGAGTGTGCTGACAAGTGTAAAGCCATTGGTG  
 CCACCATCAGTGAGGAAGATTTTCAAAGGATACTTCTGTCTCCTGCTCTCTACAAGGAGAAAATGAATG  
 CCTTATTACATTCCTAATAACTACGATAATGAAGGAAAACCATCATTACAACATCAATGAAAAAGAC  
 TGCCCCAAACCTCAAACATTCATGATCATGTTGGGGTGTCACTGGCGATCCTGCTCATCGGAGTTG  
 TGCTACTGTGATTTGGAAGCTGCTGGTATCATTTTATGACCGGAAGGAGTTGCTAAATTTGAAGCAGA  
 ACGCTCTAAGGCCAAGTGGCAAACGGGAACCAATCCTCTGTACCGAGGTTCCACCAGCACTTTTAAGAAC  
 GTGACCTACAAGCACAGGAGAAGCACAAGCAGGCCTTTCCTCAGATGGG

**ACGCGT**ACGCGGCCGCTCGAG – GFP Tag – GTTTAA

**Protein Sequence:** >MG210654 representing NM\_021359  
 Red=Cloning site Green=Tags(s)

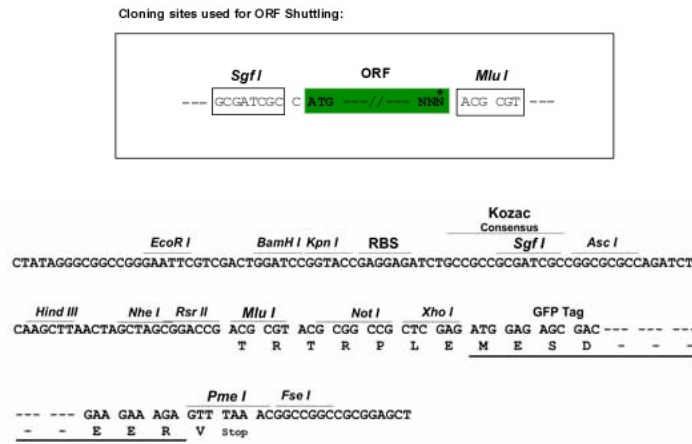
```

MGIELVCLFLLLLGRNDHVQGGCAWGAESCSDCLLTGPHCAWCSQENFTHLSGAGERCDTPANLLAKGC
QLPFIENPVSRIEVLQNKPLSVGRQKNSSDIVQIAPQSLVVKLRPGREQLQVQVRQTEDYPVDLYYLM
LSASMDDDLNTIKELGSRKAKEMSKLTSNFRLGFGSFVEKPVSPFMKTTPEEITNPCCSSIPYFCLPTFGF
KHILPLTDDAERFNEIVRKQKISANIDTPEGGFDAIMQAAVCKEIKGWRNDSLHLLVFVSDADSHFGMDS
KLAGIVIPNDGLCHLDHRNEYSMTVLEYPYPTIGQLIDKLVQNNVLLIFAVTQEQVHLYENYAKLIPGATV
GLLQKDSGNILQLIISAYEELRSEVELEVLGDTEGLNLSFTALCNNGVLFPHQKCSHMKVGDASFNVT
VSVSNCEKRSRNLIIKPVGLGDTLEILVSAECDQREIETNSSKCHNGNGSFQCGVCTCNPGHMGPHC
ECGEDMVSTDSCKESPGHPSCSGRGDCYCGQCICHLSPYGSYGPYCQCDNFSLRHKGLLCCGDNDCDC
GECVCRDGTGEYCNCTNRDCTSEDGVLCSGRGDCVCGKVCVRNPGASGPTCERCPTCGDPCNSKRSC
IECYLSADGQAQEECADKCKAIGATISEEDFSKDTSVSCSLQGENECLITFLITTDNEGKTIHININEKD
CPKPPNIPMIMLVSLAAILLIGVLLCIWKLLVSFHDRKEVAKFEAERSKAKWQTGNPLYRGSTSTFKN
VTYKHREKHKAGLSSDG
  
```

TRTRPLE - GFP Tag - V

**Restriction Sites:** SgfI-MluI

**Cloning Scheme:**

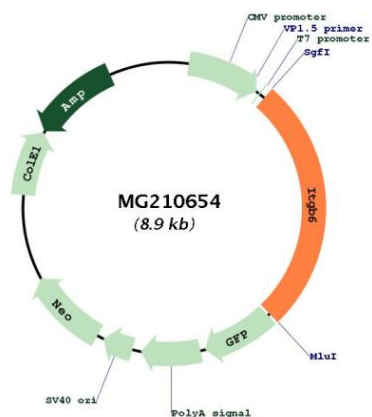


**ACCN:** NM\_021359

**ORF Size:** 4785 bp

<b>OTI Disclaimer:</b>	<p>Due to the inherent nature of this plasmid, standard methods to replicate additional amounts of DNA in E. coli are highly likely to result in mutations and/or rearrangements. Therefore, OriGene does not guarantee the capability to replicate this plasmid DNA. Additional amounts of DNA can be purchased from OriGene with batch-specific, full-sequence verification at a reduced cost. Please contact our customer care team at <a href="mailto:custsupport@origene.com">custsupport@origene.com</a> or by calling 301.340.3188 option 3 for pricing and delivery.</p> <p>The molecular sequence of this clone aligns with the gene accession number as a point of reference only. However, individual transcript sequences of the same gene can differ through naturally occurring variations (e.g. polymorphisms), each with its own valid existence. This clone is substantially in agreement with the reference, but a complete review of all prevailing variants is recommended prior to use. <a href="#">More info</a></p>
<b>OTI Annotation:</b>	This clone was engineered to express the complete ORF with an expression tag. Expression varies depending on the nature of the gene.
<b>Components:</b>	The ORF clone is ion-exchange column purified and shipped in a 2D barcoded Matrix tube containing 10ug of transfection-ready, dried plasmid DNA (reconstitute with 100 ul of water).
<b>Reconstitution Method:</b>	<ol style="list-style-type: none"> <li>1. Centrifuge at 5,000xg for 5min.</li> <li>2. Carefully open the tube and add 100ul of sterile water to dissolve the DNA.</li> <li>3. Close the tube and incubate for 10 minutes at room temperature.</li> <li>4. Briefly vortex the tube and then do a quick spin (less than 5000xg) to concentrate the liquid at the bottom.</li> <li>5. Store the suspended plasmid at -20°C. The DNA is stable for at least one year from date of shipping when stored at -20°C.</li> </ol>
<b>RefSeq:</b>	<a href="#">NM_021359.3</a> , <a href="#">NP_067334.1</a>
<b>RefSeq Size:</b>	4798 bp
<b>RefSeq ORF:</b>	2364 bp
<b>Locus ID:</b>	16420
<b>UniProt ID:</b>	<a href="#">Q9Z0T9</a>
<b>Cytogenetics:</b>	2 34.81 cM
<b>Gene Summary:</b>	<p>Integrin alpha-V:beta-6 (ITGAV:ITGB6) is a receptor for fibronectin and cytotactin (By similarity). It recognizes the sequence R-G-D in its ligands (PubMed:10025398). ITGAV:ITGB6 acts as a receptor for fibrillin-1 (FBN1) and mediates R-G-D-dependent cell adhesion to FBN1 (By similarity). Integrin alpha-V:beta-6 (ITGAV:ITGB6) mediates R-G-D-dependent release of transforming growth factor beta-1 (TGF-beta-1) from regulatory Latency-associated peptide (LAP), thereby playing a key role in TGF-beta-1 activation (PubMed:10025398).</p> <p>[UniProtKB/Swiss-Prot Function]</p>

Product images:



Circular map for MG210654