

## Product datasheet for **MG210638**

### **Pcdhb3 (NM\_053128) Mouse Tagged ORF Clone**

#### **Product data:**

Product Type:	Expression Plasmids
Product Name:	Pcdhb3 (NM_053128) Mouse Tagged ORF Clone
Tag:	TurboGFP
Symbol:	Pcdhb3
Synonyms:	PcdhbC
Mammalian Cell Selection:	Neomycin
Vector:	pCMV6-AC-GFP (PS100010)
E. coli Selection:	Ampicillin (100 ug/mL)



[View online »](#)

ORF Nucleotide  
Sequence:

>MG210638 representing NM\_053128  
Red=Cloning site Blue=ORF Green=Tags(s)

TTTTGTAATACGACTCACTATAGGGCGGCCGGAATTCGTCGACTGGATCCGGTACCGAGGAGATCTGCC  
GCC**CGCATCGCC**

ATGGAGGCCAGAGAGAAAGCTTCTTAAACAAAGGCAAGCTTGCTTCTCTTTGTTTTCTGGTGGGT  
CTCTTGCTGGGTCCATGTCTAGGCGCTATTCTGTGGCGGAGAAAAGGAGAAGGGCTTCGTAAATAGCCAA  
TTTAGCGACGGATCTGGGGCTTAGTATAGAAGAACTGGCTGAAAGGAGAGCTCAAGCTATCTCAAAGGG  
AACATACAGTATTTTCAGCTCAGTCATCAGACCGGAGATTTGCTCTTAGTTGAGAAATTGGACCGGGAGG  
ATTTGTGTGGCTCGACAGAGCCTTGTGTGCTGCACTTTCAGATATTGCTGCATGATCCTTTGCACTTTAT  
TACAAATGAGCTCGAGGTCATAGATGTAATGACCATGCCCCGGAGTTCTTTGAAATGCAATGCAGCTG  
AAAGTCTGGAAGAACTCCGTGCCTGGGACAGTAATTCCTTTGGGAAATGCCGTGGACCTGGATGTGGAA  
GAAACGGACTCCAGAACTACACGGTCTCTCCACGTCTCATTTCATGTTACACCCGCCGTCGCAGGGA  
TGGAAGAAAGTATCCAGAGCTAGTTCTAGACAGAGCTCTGGATCGGGAAGAGCAGTCAGAGATCAGTTTA  
ACTCTCACAGCCCTGGATGGAGGATCCCCGCTCGTTCTGGAACCTACCCAGGTCCACATCCTGGTCTTAG  
ACACAAATGATAATGCCCGAATTTACACAGTCACTCTATGAGGTTCAAATTTAGAGAAAAGCCCTAT  
TGGCTCTGTCACTTACCACTGTCTCTGCCTCTGACTTGGATACGGGAAATTTGGTGAATATCATATGTC  
TTTTTTCATGTTCTGAAGAAATTCGAAACTTTTCGACTGAACTCCAGTACTGGTAATATACAGCTAC  
TTAAGGGTTTGGATTATGAAGCAATTAATACTTATGAGTTGACATAGAGGCCAAGGATGGTGGAGGCC  
TTCAGGAAATGCACAGTCATAGTTCAGATACTTGATGTGAACGATAACCCACCAGAAGTACCCTGTCA  
TCAGTTAACAGTCTTATCCCGAGAATTCAGCAGAAACTGTGGTGGCTGTTTTCACTTTGAAACATCTGT  
AGCTGGAGATAACGGAAGAGTGACATGTTCCATCCAGAACGACCTCCCTTCATCTTGAACATCACC  
ATCACGGTCTCAGACCTGGGCACACCCAGGCTCACAACCCAGCACACCATAACAGTGCAAGTGTCTGACC  
TCAACGACAACGCCCCGCCCTTACCCAAACTTCTACACCATGTCCGGTCCGTGAGAACAACAGCCCTGC  
CCTGCACATAGGCACCATCAGTGCCACAGACTCAGACTCAGGCTCCAATGCCACATCACCTACTCGCTG  
CTGCCGCCACGACCCACAGCTGGCCCTCGATTCACTCATCTCCATCAATGCTGACAACGGGCAGCTGT  
TTGCACTCAGGGCGCTGGACTATGAGGCCCTGCAGGCCTTCGAGTTCCATGTGGCGCCACAGATGGAGG  
CTCACCCGCGCTCAGCAGCCAGGCTCTGGTGCCGTGGTGGTCTGGACGACAATGACAATGCGCCCTC  
GTGCTCTACCCACTACAGAACGCTTCTGCGCCCTGCACTGAGCTGCTGCCAGGGCTGCGGAGACTGGAT  
ACCTGGTCACCAAGGTAGTGGCAGTGGACCGGACTCTGGACAGAATGCCTGGCTGTATTCCAGCTGCT  
CAAGTCCACAGAGCCCGGGTTGTTCACTGTGTGGGCTCACAATGGCGAGGTGCGCACCCAGGCTGCTG  
AGTGAGCGGATATGCTCAAGCAAAAGCTGCTGCTACTGGTCAAGGACAATGGGGATCCTCCTCGCTCTG  
CAAGTGTACCCCTGAATGTGCTGCTAGTGGATGGCTTTTCTCAACCCACCTGCCTTTGCTGAGGTGGC  
ACGCGACTCCGTCCAAAACGACGTGGACTTGTCTCAGTTGACTTAGTCATCGCCTTGGCATCTGTGCT  
TCTCTCTCTCTGTCTGTGCTGCTGTTGTGGGGGTGAGACTGTGCAGGAGGGCCAGAGCAGCTTCTA  
TGGGTGGCTGCTGTGCCTGAGGGACTTTCCTGGCCACCTGGTGGACGTGAGCGGTATGGGGACCCT  
GTCACAGAGCTACCAGTATGAGGTGTCTGACAGGAGATGCTGGGACTGGTGGTCAAACCTCTGAAT  
CCGGTGATACCAAACCTGTTTCTGGAAGAATCTGAAAGAAGT

**ACGCGT**ACGCGGCCGCTCGAG - GFP Tag - GTTTAA

**Protein Sequence:** >MG210638 representing NM\_053128  
 Red=Cloning site Green=Tags(s)

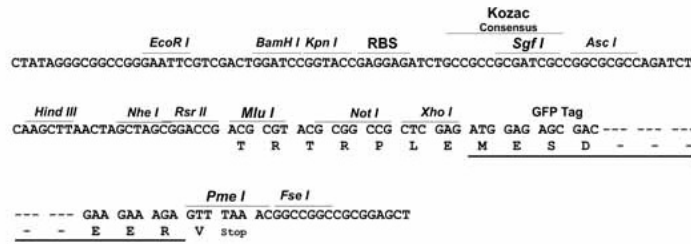
```
MEAREESFLKQRQVLLL FVFLGGSLAGSMSRRYSVAEEKEKGFVIANLATDLGLSIEELAERRAQAI SKG
NIQYFQLSHQTGDL LLEKLDREDLCGSTEPVLHFQILLHDPLQFITNELEVIDVNDHAP EFFENAMQL
KVL ENSVPGTVIPLGNAVDLDVGRNGLQNYTVSPTSHFHVHTRRRRDGRKYPELVLDRALDREEQSEISL
TLTALDGGSPPRSGTTQVHILVLDTNDNAPEFTQSLYEVQILEKSPIG SVITTVSASDLDTGNFGAISYV
FFHASEEILETFRLNSSTGNIQLL KGLDYEAINTYEVDIEAKDGGGLSGKCTVIVQILDVNDNPPELTL S
SVNSLIPENSAETVAVFVSVDLDSGDNGRVTCSIQNDLPFILKPSVENFYTIASEWALDREIRAEYNIT
ITVSDLTGTPRLTTQHTITVQVSDLNDNAPFTQT SYTMSVRENNSPALHIGTISATDSDSGSNAHITYSL
LPPHDPQLALDSLISINADNGQLFALRALDYEALQAFEFHVGATDGGSPALSSQALVRVVVLDNDNAPF
VLYPLQNASAPCTELL PRAAETGYLVTKVAVDRDSGQNAWLSFQLLKSTEPGLFSVWAHNGEVRTARLL
SERDMLKQKLLLLVKDNGDPPRSASVTLNVLLVDGFSQPYLPLPEVARDSVQNDVDLLTLYLVIASVS
SLFLLSVLLFVGVRLCRRARAASMGGCSVPEGHFPGHLVDVSGMGTLSQSYQYEVCLTGDAGTGEFKLLN
PVIPNLFLEESERS
```

TRTRPLE - GFP Tag - V

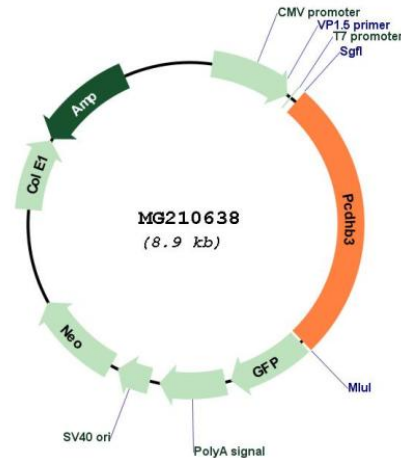
**Restriction Sites:** SgfI-MluI

**Cloning Scheme:**

Cloning sites used for ORF Shuttling:



Plasmid Map:



ACCN: NM\_053128

ORF Size: 2352 bp

OTI Disclaimer: The molecular sequence of this clone aligns with the gene accession number as a point of reference only. However, individual transcript sequences of the same gene can differ through naturally occurring variations (e.g. polymorphisms), each with its own valid existence. This clone is substantially in agreement with the reference, but a complete review of all prevailing variants is recommended prior to use. [More info](#)

OTI Annotation: This clone was engineered to express the complete ORF with an expression tag. Expression varies depending on the nature of the gene.

Components: The ORF clone is ion-exchange column purified and shipped in a 2D barcoded Matrix tube containing 10ug of transfection-ready, dried plasmid DNA (reconstitute with 100 ul of water).

Reconstitution Method:

1. Centrifuge at 5,000xg for 5min.
2. Carefully open the tube and add 100ul of sterile water to dissolve the DNA.
3. Close the tube and incubate for 10 minutes at room temperature.
4. Briefly vortex the tube and then do a quick spin (less than 5000xg) to concentrate the liquid at the bottom.
5. Store the suspended plasmid at -20°C. The DNA is stable for at least one year from date of shipping when stored at -20°C.

RefSeq: [NM\\_053128.2](#), [NP\\_444358.2](#)

RefSeq Size: 3787 bp

RefSeq ORF: 2355 bp

Locus ID: 93874

Cytogenetics: 18 B3