

Product datasheet for **MG210632**

Ercc3 (NM_133658) Mouse Tagged ORF Clone

Product data:

Product Type:	Expression Plasmids
Product Name:	Ercc3 (NM_133658) Mouse Tagged ORF Clone
Tag:	TurboGFP
Symbol:	Ercc3
Synonyms:	BTF2 p89; Ercc-3; XPB
Mammalian Cell Selection:	Neomycin
Vector:	pCMV6-AC-GFP (PS100010)
E. coli Selection:	Ampicillin (100 ug/mL)



[View online »](#)

ORF Nucleotide
Sequence:

>MG210632 representing NM_133658
Red=Cloning site Blue=ORF Green=Tags(s)

TTTTGTAATACGACTCACTATAGGGCGGCCGGGAATTCGTCGACTGGATCCGGTACCGAGGAGATCTGCC
GCC**GCGATCGCC**

ATGGGCAAAGAGATCGAGTGGACCGCGACAAAAGAAATCCAAGAAGAGGCAGTATGAAGAGGAAGAGG
AAGACGAAGACGACATTCTGGGAACGAGTCTCAGGAGGCGGTGCCCTCCGCCGCTGGGAAACAGGTGGA
CGAGTCCAGCACAAAGTGGATGAGTATGGAGCAAAGGACTACAGACAGCAGATGCCACTAAAGGGTGAC
CATACTCCAGGCCCTCTGGGTGGCTCCTGATGGCCACATTTTCTTGAAGCCTTCTCTCCAGTTTACA
AATATGCCAAGACTTCTGGTGGCAATTGCAGAGCCGGTGTGCCGGCCTACTCATGTACATGAATAACA
GCTAACCCGCTACTCCCTCTATGCAGCGGTGAGTGTGGGCTGCAAACCAGTGACATTACTGAGTACCTC
AGAAAGCTCAGTAAGACTGGAGTTCCTGATGGAATTATCCAGTTTATTAAGCTGTGCACTGTCAGCTATG
GGAAGGTCAAGCTGGTCCCTCAAGCACAAACAGTACTTTGTTGAAAGTTCCACCCCTGATGTTATCCAGCA
TCTTCTCAAGACCCAGTATCCGGGAATGTCGTTGAGGAACGCCGAGGGCGAGGCCACCGAACTCATC
ACAGAGACTTTTACAAGCAAATCTGCTATTTCTAAGACGGCGGCCGAAGGCAGTGGCGGGCTTCTACTT
CGCAGGGGTAGATGCACAGGCCACGTCTGACATACCCAAAGACCTGTTTGATTTTTATGAGCAAATGGA
CAAGGATGAGGAGGAGGAGGAAGAGACACAGACAGTGTCTTTGAAGTTAAGCAGGAAATGATCGAGGAG
CTGCAGAAGCGCTGCATCTGCTTAGAGTACCCGCTGCTGGCAGAGTATGACTTCCGGAATGACACTCTCA
ATCCTGACATCAACATTGACCTGAAGCCACAGCCGTAAGTACTCAGACCCTATCAGGAGAAGAGCCTGCGGAA
GATGTTTGGGAACGACGACGACGCTCAGGAGTCAATTGTTCTTCCCTGTGGTGTGGGAAGTCCCTGGTC
GGCGTGACTGCCGCATGCACTGTGAGAAAGCGCTGTCTCGTCTGGGCAACTCGGCTGTGTCTGTGGAGC
AGTGGAAAAGCCAGTTTAAAGATGGTCAACCATCGATGACAGCCAGATCTGCCGCTTACCTCAGATGC
CAAGGACAAGCCATCGGCTGCTCCGTTGCCATTAGCACTTACTCTATGCTGGGCCACACCACAAAAGG
TCTGGGAAGCTGAGAGAGTCAAGAGTGGCTCAAACCCAGGAGTGGGGCTCATGATCCTTGACGAGG
TGACACACATTCCAGCCAGGATGTTCCGGCGGTTCTGACTATTGTGACGGCGCACTGTAAGCTTGGTTT
GACTGCAACCCTTGTCCGGGAAGATGACAAAATTGTTGACTTAAATTTCTGATTGGGCCAAGCTCTAT
GAAGCCAACTGGATGGAGCTGCAGAACAATGGGTACATCGCTAAAGTCCAGTGTGCTGAGGTTTGGTGCC
CGATGTCTCCCGAGTTCTACCGAGAGTATGTGGCAATCAAACAAAGAAACGGATCCTGTTGTACACCAT
GAATCCCAACAAATTCAGAGCCTGCCAGTTTCTGATCAAGTTTCATGAAAGGAGGAATGACAAGATTATT
GTCTTTGCTGACAACGTATTTGCCTTGAAGGAATATGCCATTCCGCTGAACAAACCTTATATCTACGGC
CCACGTCCAGGGAGAAGTATGCAGATTCTCCAGAACTCAAGCACAAACCCAAAATCAACACCATCTT
CATCTCCAAGGTTGGTGACACATCCTTTGATCTGCCAGAAGCCAATGTCCTCATTAGATCTCTCCCAT
GGTGGCTCCCGACGGCAGGAAGCCAGAGACTGGGACGGTACTCAGAGCCAAGAAAGGGATGGTCGCAG
AGGAATACAATGCCTTTTCTACTCCCTGGTATCTCAGGACACACAGGAAATGGCTTATTCTACCAAGCG
ACAGAGATTCTAGTGGATCAAGTTACAGCTTAAAGTAATCACAAAGCTAGCTGGCATGGAGGAAGAG
GAGCTGGCGTTCTCCACCAAGAGGAGCAGCAGCAGCTCCTGCAGAAGGTGCTGGCAGCCACCGACTTGG
ATGCAGAGGAGGAAGTGGTGGCTGGAGAGTTTGGCTCTAGATCTGGCCAGGCATCCCGACGCTGTGGCAC
CATGAGCTCCCTGTCAGGCGCAGACGACACCGTGTACATGGAGTACCACTCCTCCGAAGCAAGGCCCTCC
AGCAAGCACGTGCACCCGCTTTTCAAACGCTTCAGGAAG

ACGCGTACGCGGCCGCTCGAG – GFP Tag – GTTTAA

Protein Sequence: >MG210632 representing NM_133658
 Red=Cloning site Green=Tags(s)

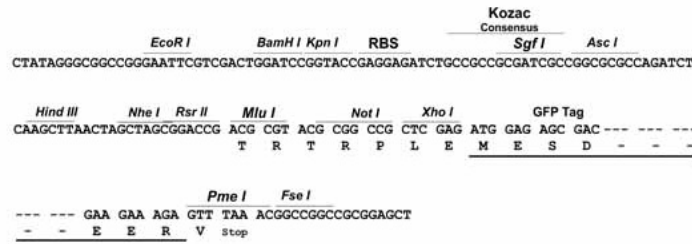
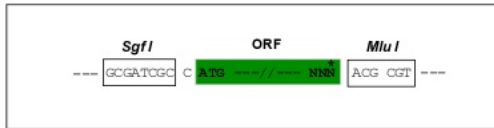
MGKRDRVDRDKKSKKRQYEEEEDEDDIPGNESQEAVPSAAGKQVDESSTKVDEYGAKDYRQOMPLKGD
 HTSRPLWVAPDGHIFLEAFSPVYKYAQDFLVAIAEPVCRPTHVHEYKLTAYSLYAAVSVGLQTSIDITEYL
 RKLSTKGVPDGI IQF IKLCTVSYGKVKLVLKHNRVYFVESSHDPDIQHLLQDPVIRECLRNAEGEATELI
 TETFTSKSAISKTA AEGSGGPSTSQGVDAQATSDIPKDLDFYEQMDKDEEEEEETQTVSFEVKQEMIEE
 LQKRCICLEYPLLA EYDFRNDTLNPDINIDLKPTAVLRPYQEKSLRKMFGNGRARSQVIVLPCGAGKSLV
 GVTAACTVRKRCLVLGNSAVSVEQWKAQFKMWSTIDDSQICRFTSDAKDKPIGCSVAISTYSMLGHHTKR
 SWEAERVMEWLKTQEWGLMILDEVHTIPARMFRRVLTIVQAHCKLGLTATLVREDDKIVDLNFLIGPKLY
 EANWMLQNGYIAKVQCAEVWCPMSPEFYREYVAIKTKKRILLYTMNPNKFRACQFLIKFHERRNDKII
 VFADNVFALKEYAIRLNKPYIYGPTSQGERMQILQNFKHNPKINTIFISKVGDTSFDLPEANVLIQISSH
 GGSRRQEAQRLGRVLRKAKGMVAEEYNAFFYSLVSQDTQEMAYSTKRQRFLVDQGYSFKVIKLAGMEEE
 ELAFSTKEEQQLLQKVLAAATDLDAEEVVAGEFGSRSGQASRRCGTMSLSSGADTVYMEYHSSRSKAS
 SKHVHPLFKRFRK

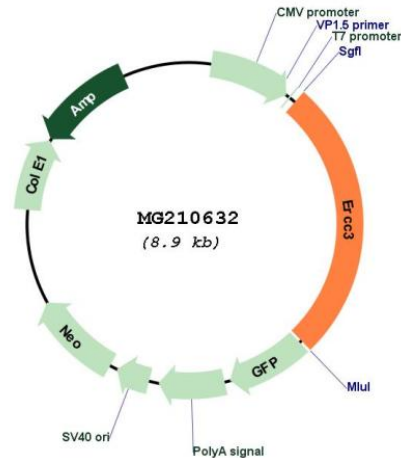
TRTRPLE - GFP Tag - V

Restriction Sites: SgfI-MluI

Cloning Scheme:

Cloning sites used for ORF Shuttling:



Plasmid Map:


ACCN: NM_133658

ORF Size: 2349 bp

OTI Disclaimer: The molecular sequence of this clone aligns with the gene accession number as a point of reference only. However, individual transcript sequences of the same gene can differ through naturally occurring variations (e.g. polymorphisms), each with its own valid existence. This clone is substantially in agreement with the reference, but a complete review of all prevailing variants is recommended prior to use. [More info](#)

OTI Annotation: This clone was engineered to express the complete ORF with an expression tag. Expression varies depending on the nature of the gene.

Components: The ORF clone is ion-exchange column purified and shipped in a 2D barcoded Matrix tube containing 10ug of transfection-ready, dried plasmid DNA (reconstitute with 100 ul of water).

Reconstitution Method:

1. Centrifuge at 5,000xg for 5min.
2. Carefully open the tube and add 100ul of sterile water to dissolve the DNA.
3. Close the tube and incubate for 10 minutes at room temperature.
4. Briefly vortex the tube and then do a quick spin (less than 5000xg) to concentrate the liquid at the bottom.
5. Store the suspended plasmid at -20°C. The DNA is stable for at least one year from date of shipping when stored at -20°C.

RefSeq: [NM_133658.2](#)

RefSeq Size: 2673 bp

RefSeq ORF: 2352 bp

Locus ID: 13872

UniProt ID: [P49135](#)

Cytogenetics: 18 B1

Gene Summary:

ATP-dependent 3'-5' DNA helicase, component of the general transcription and DNA repair factor IIH (TFIIH) core complex, which is involved in general and transcription-coupled nucleotide excision repair (NER) of damaged DNA and, when complexed to CAK, in RNA transcription by RNA polymerase II. In NER, TFIIH acts by opening DNA around the lesion to allow the excision of the damaged oligonucleotide and its replacement by a new DNA fragment. The ATPase activity of XPB/ERCC3, but not its helicase activity, is required for DNA opening. In transcription, TFIIH has an essential role in transcription initiation. When the pre-initiation complex (PIC) has been established, TFIIH is required for promoter opening and promoter escape. The ATP-dependent helicase activity of XPB/ERCC3 is required for promoter opening and promoter escape. Phosphorylation of the C-terminal tail (CTD) of the largest subunit of RNA polymerase II by the kinase module CAK controls the initiation of transcription.[UniProtKB/Swiss-Prot Function]