

Product datasheet for **MG210623**

Pla2g4b (BC098210) Mouse Tagged ORF Clone

Product data:

Product Type:	Expression Plasmids
Product Name:	Pla2g4b (BC098210) Mouse Tagged ORF Clone
Tag:	TurboGFP
Symbol:	Pla2g4b
Synonyms:	MGC28892
Mammalian Cell Selection:	Neomycin
Vector:	pCMV6-AC-GFP (PS100010)
E. coli Selection:	Ampicillin (100 ug/mL)



[View online »](#)

ORF Nucleotide
Sequence:

>MG210623 representing BC098210
Red=Cloning site Blue=ORF Green=Tags(s)

TTTTGTAATACGACTCACTATAGGGCGGCCGGGAATTCGTCGACTGGATCCGGTACCGAGGAGATCTGCC
GCC**CGGATCGCC**

ATGCAGGCAAAGGTGCCAGAGACATGCCTGCTCACTGTACGCGTCTCCGGGCCAGTGGCTTGCCTTCCA
AGGACCTAGTAACCTCCTCTGACTGCTATGTGACTCTGAACCTGCCACGCTTCCAGCCACAGCTCCA
GACACGCACAGTCAAGAACAGCCGAAACCTGTCTGGAATCAGAACTTCCACTTCCGGATCCATAGGCAG
CTCAAGAATGTTATTGAACTGAAAGCCTTTGACCATGACCTGGTGACCAGAGATGACCCAGTATTGTCAG
TGCTGTTTGACGTGGGACCTGCAAAATGGGACTCAGCGCCAGAGCTTCTCCTTGGGACTCAGGAGAA
AGGGTGTAGAAAGTTGAGTTTCGGCTACAGACTCTGACAGACTGTGAGGAACAGCTCATCAGCAATGGC
ATCGTGGTGGCCGGAACTCTCCTGCTGCACGTTGAACTGAAGAGGACAGGAGATCCAAAGAGGTCAG
AGCGCAAAGTTCAACTTGTGGTGTGCTGGGGCTGTGAGGGCCACAGGATGCCTCTCGGGCACTGGATC
TTTCCACTTCCATTATCCAGCCTGCTGGGAGCAAGAGCTGAATGTTTCATCTGCAGGATGACCCCATGAG
CAGCTGAAGGTGCCACTACGAACCTACCTCCTCGCAGCTGGTGAGACTTGTCTTCCCAAGTCCCAAGG
AGCCACTGATGAGGCTGGAACCTCAAGAAGGAAGAAGGACCAAGGAGCTGGCTGTGCGGCTGGGCTGTGG
GCCCTGCCCTGAGGAACAGGCCTTCTAAGCAAGAGGAAGCAGGTGGTGGCTGCCGCGTGAAAAAGGCC
TTACAGCTGGACCAAGACCTGCACGAGGATGAGATCCCGTGATTGCCGTGATGGCCACTGGTGGTGGGA
TCCGGGCCATGACGTCTTTGATAGGGCAGCTGGCCGGCTGCAGGAGCTCGGCCCTCTCGACTGCATCTC
CTATATCACGGGGGCTCAGGATCCACCTGGGCACTGGCAACCTCTATGAGGACCCAGAGTGGTGCAG
AAGGACCTGGCAGGGCCACTGAGGTGCTGAAGACACAGGTGACAAAGAGCAAGCTGGGTGCGTTGGCCC
CTAGCCAACTTTGGCGGTACCGCAAGAGCTGGCTGAGCGTGTGCTGCCTGGGCCACCCAACTGCTTCC
CAACTTGTGGGCCCTCATTAAATGAGGCCTTGTGCACGACAAGCCCATGAACACAAACTCTCAGATCAA
CGAGAGGCCCTGAGTCGAGGCCAGAACCCTCTGCCTATCTATTGTGCCCTCAACGCAAGGAGCAGGGCC
TGAGTACCTTTGACTTTGGGGAGTGGTGTGAGTTCTCTCCATATGAAGTCGGCTTCCCAAGTATGGAGC
CTTCATCTCCTCCGAGCTCTTTGGCTCGGAGTTCTTTATGGGGCGGCTGGTGAAGCAGCTTCCCGAGTCC
CGCATCTGCTTCCGGAAGGCATCTGGAGCAATCTGTTTGGGCCAGCCTCAAGACAGCTTGTACTGGT
CCTCAGAACCCAGCCAGTTCTGGGACCGCTGGGCGCAGGATCAGGCCAACCTGGACAAAGAGCAGGTCCC
CCATCTGAAGATAGCAGAGCCACCGACAATGGCTGGCAGGATCGCCGAGCTTTCCTACTGACCTCCTGACA
AAGCGTCCCTCGCCACGCCACCCACAACCTTACGCGAGGCCTCCATTTCCACAAGGACTATTTCCAGA
ACTCTCACTTCTCTGCCTGGAAAGCTTCCAAACTGGACAGGCTCCCAACCCAGCTGACACCCACTGAGCC
CCACCTCTGCCTCCTGGATGTTGGCTATCTCATCAATACTAGCTGCCACCCCTCCTGCAGCCAACACGG
GATGTGGACCTCATCTTGTCACTGGACTACAACCTCTACGGAGCCTTTCAGCAGCTGCAGCTTCTGAGCC
GGTTCTGCCAGGAGCAGGGCATCCCTTTCCATCCATCTACCCAGCCCCGAGGAGCAGCGGCAGCCTCA
GGAGTGCCATCTGTTCTGTGACCAGCCAGCCGAAAGCCCGGCTGTGCTGCACTTCCCTTTGGTCAAT
GACTCCTTCCAAGACTACTCTGCCCTGGGGTCCACGGACATCGGAGGAGAAGGCAGCTGGGGAGGTGA
ATCTGTCTTCTTCTGACTCCCCATACCACTACAAAAAGTGACCTACAGCCAGGAAGATGTGGACAAGCT
GTTACGGCTGACGCATTACAACATCTGCAACAACCAGGATCGGCTCGGGAGGCCATGCACCAGGCCGTG
CAGCGGCCGAGAAAGCGCAACAGTTTAGGCCGGAG

AG**CGGACCG**ACGCGTACGCGGCCGCTCGAG - GFP Tag - GTTTAA

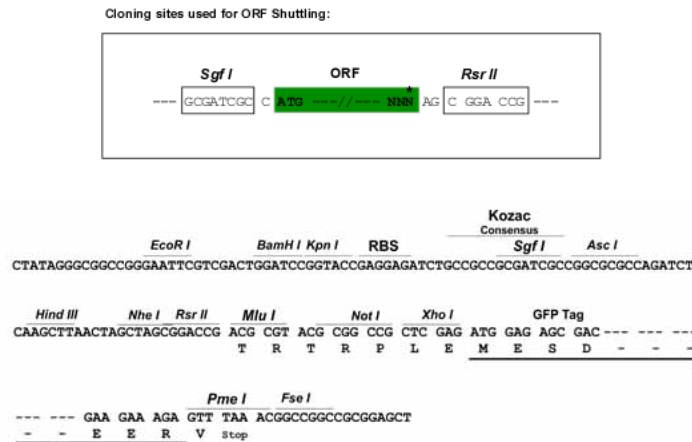
Protein Sequence: >MG210623 representing BC098210
 Red=Cloning site Green=Tags(s)

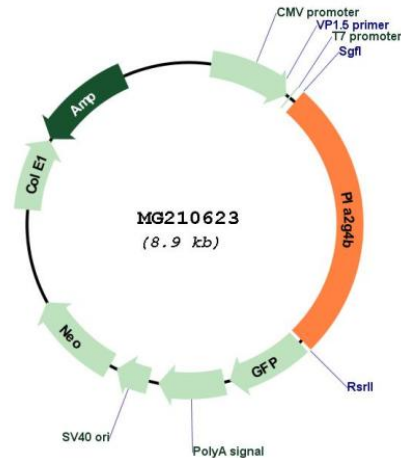
MQAKVPETCLLTVRVLRASGLPSKDLVTSSDCYVTLNLPTASSHTLQTRTVKNSRNPVWNQNFHFRIHRO
 LKNVIELKAFDHDLVTRDDPVLVLFVDVGTLQIGTQRQSFSLGTQEKGCLEVEFRLQTLTDCEEQLISNG
 IVVARELSCLHVELKRTGDPKRSEKRVQLVVAGACEGPDASAGTGSFHFHYPACWEQELNVHLQDDPHE
 QLKVPLRTLPSQLVRLVFPTSQEPMLRLELKKKEEGPKELAVRLGCGPCPEEQAFLSKRKQVVAALKKA
 LQLDQDLHEDEIPVIAVMATGGGIRAMTSLYGQLAGLQELGLLDCISYITGASGSTWALANLYEDPEWSQ
 KDLAGPTEVLKTVTKSKLGALAPSQLWRYRQELAERARLGHPTCFNTLWALINEALLHDKPHEHKLSDQ
 REALSRGQNPLPIYCALNSKEQGLSTDFDFGEWCEFSPEYEVGFPKYGAFISSELFGEFFMGRLVKQLPES
 RICFLEGIWSNLF AASLQDSL YWSSEPSQFWRWAQDQANLDKEQVPHLKAEPPTMAGRIAELFTDLLT
 KRPLAATHNFTRGLHFHKDYFQNSHSAWKASKLDRLPNQLTPTEPHLCLLDVGYLINTSCPPLLPQTR
 DVDLILSLDYNLYGAFQQLQLLSRFCEQGI PFP S I SPSPEEQRPQECHLFC DPAQPEAPAVLHFPLVN
 DSFQDYSAPGVPRTSEEKAAGEVNLSSSDSPYHYTKVTYSQEDVDKLLRLTHYNICNNQDRLEAMHQAV
 QRRRKRKQFRPE

SGPTRRRLE - GFP Tag - V

Restriction Sites: SgfI-RsrII

Cloning Scheme:



Plasmid Map:


ACCN: BC098210

ORF Size: 2348 bp

OTI Disclaimer: The molecular sequence of this clone aligns with the gene accession number as a point of reference only. However, individual transcript sequences of the same gene can differ through naturally occurring variations (e.g. polymorphisms), each with its own valid existence. This clone is substantially in agreement with the reference, but a complete review of all prevailing variants is recommended prior to use. [More info](#)

OTI Annotation: This clone was engineered to express the complete ORF with an expression tag. Expression varies depending on the nature of the gene.

Components: The ORF clone is ion-exchange column purified and shipped in a 2D barcoded Matrix tube containing 10ug of transfection-ready, dried plasmid DNA (reconstitute with 100 ul of water).

Reconstitution Method:

1. Centrifuge at 5,000xg for 5min.
2. Carefully open the tube and add 100ul of sterile water to dissolve the DNA.
3. Close the tube and incubate for 10 minutes at room temperature.
4. Briefly vortex the tube and then do a quick spin (less than 5000xg) to concentrate the liquid at the bottom.
5. Store the suspended plasmid at -20°C. The DNA is stable for at least one year from date of shipping when stored at -20°C.

RefSeq: [BC098210](#)

RefSeq Size: 4272 bp

RefSeq ORF: 2348 bp

Locus ID: 211429

Cytogenetics: 2 E5

Gene Summary:

Calcium-dependent phospholipase A2 that selectively hydrolyzes glycerophospholipids in the sn-2 position with a preference for arachidonoyl phospholipids. Has a much weaker activity than PLA2G4A (By similarity).[UniProtKB/Swiss-Prot Function]